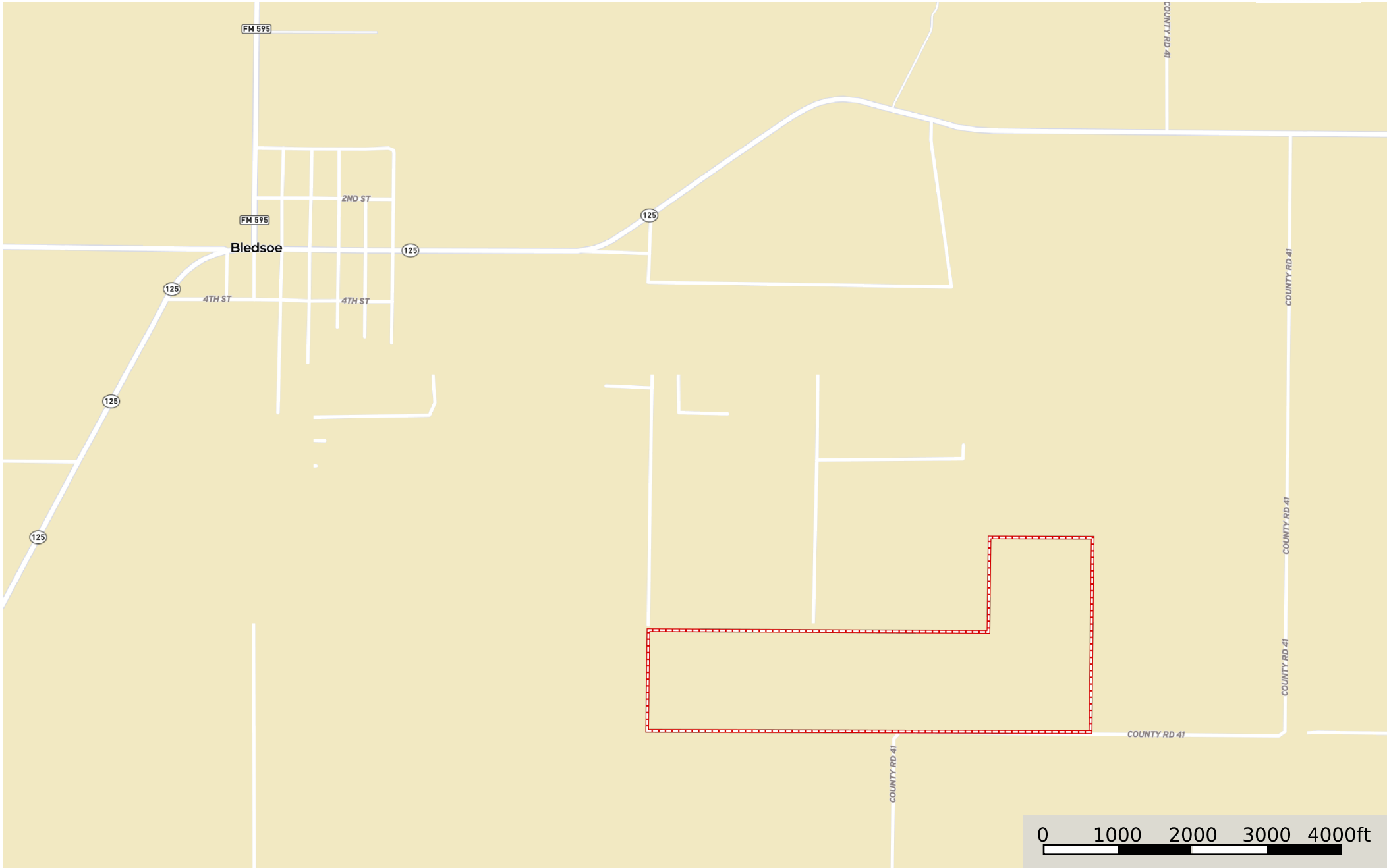
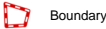
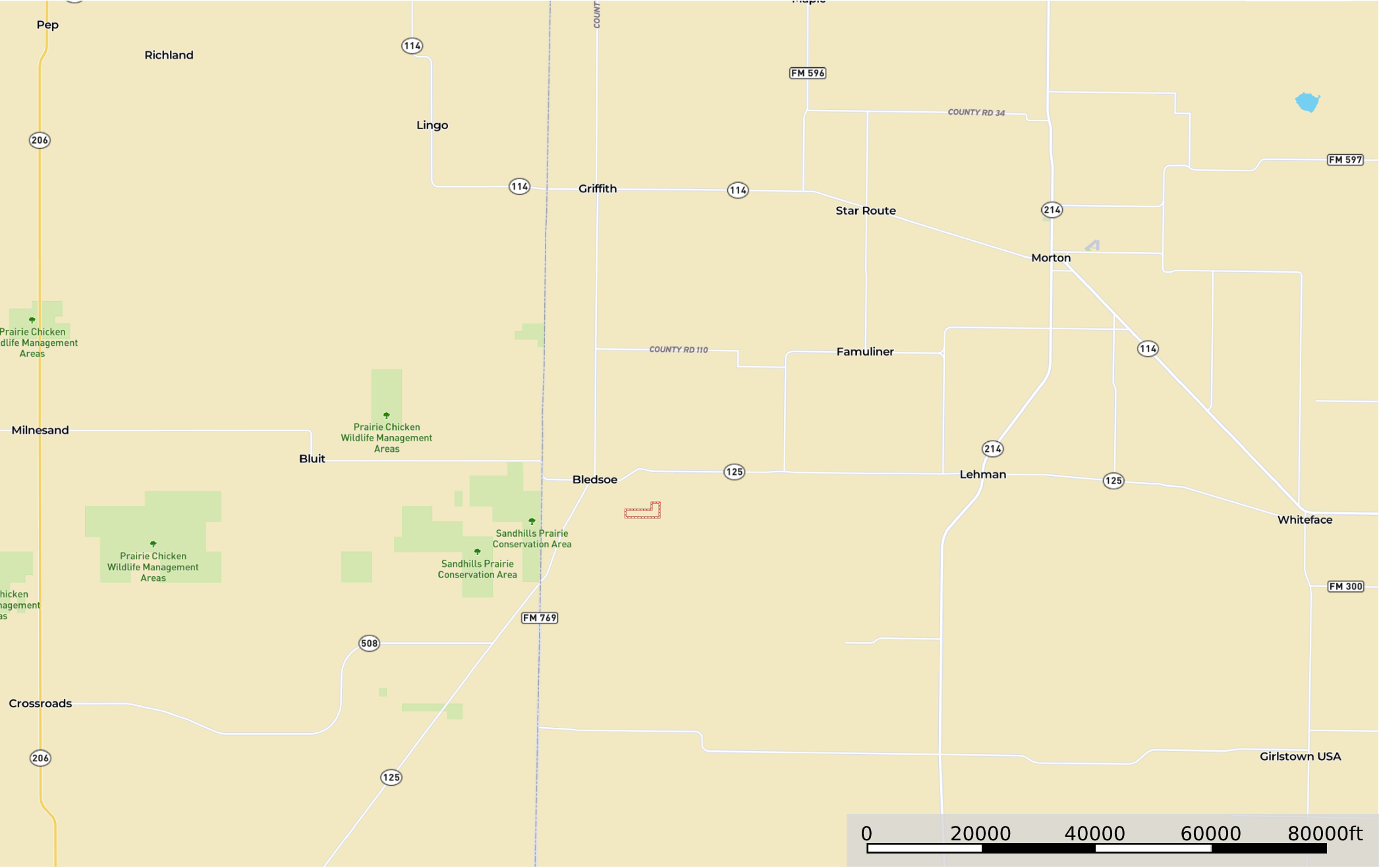


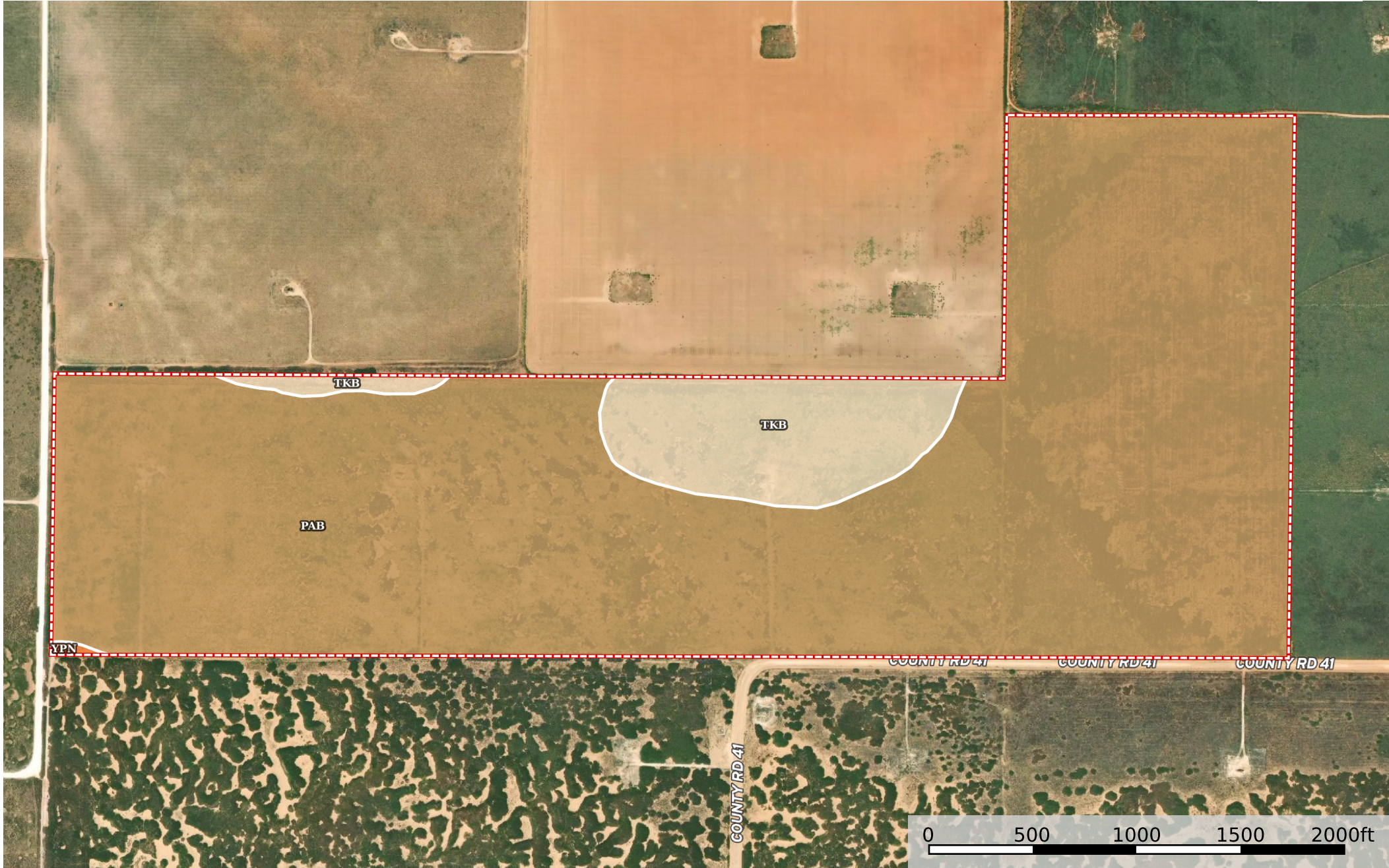



Cochran 29 - Petromark Energy, LLC
Cochran County, Texas, 219.2 AC +/-



Cochran 29 - Petromark Energy, LLC
Cochran County, Texas, 219.2 AC +/-





 Boundary

Boundary 224.31 ac

SOIL CODE	SOIL DESCRIPTION	ACRES	%	CPI	NCCPI	CAP
PAB	Patricia and Amarillo loamy fine sands, 0 to 3 percent slopes	201.98	90.05	0	45	4e
TkB	Tokio loamy fine sand, 0 to 3 percent slopes	22.06	9.83	0	31	4e
YpN	Yoakran-Plains-Nutivoli complex, 1 to 12 percent slopes	0.27	0.12	0	21	6e
TOTALS		224.31(*)	100%	-	43.59	4.0

(*) Total acres may differ in the second decimal compared to the sum of each acreage soil. This is due to a round error because we only show the acres of each soil with two decimal.

Capability Legend

Increased Limitations and Hazards

Decreased Adaptability and Freedom of Choice Users

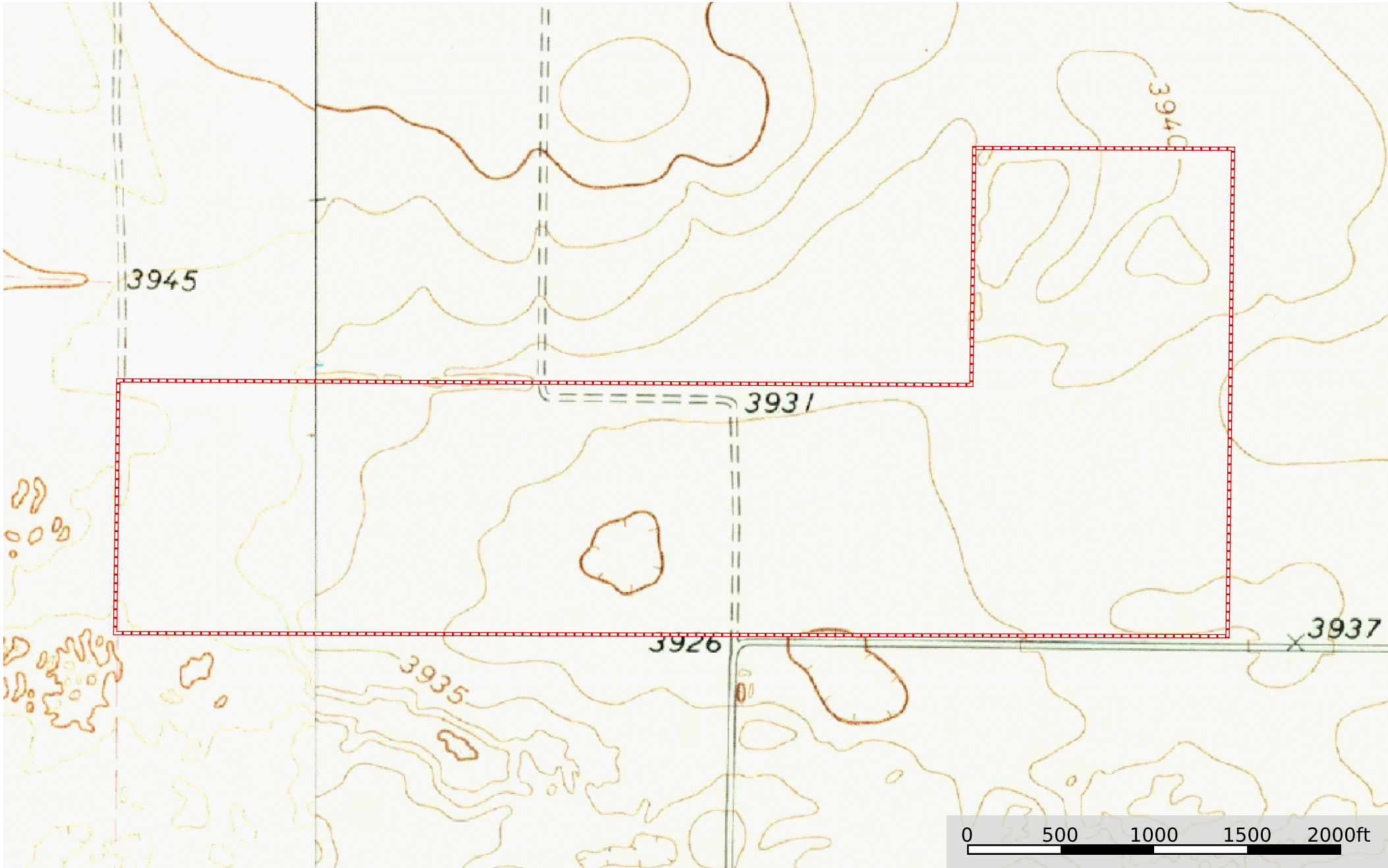
Land, Capability

	1	2	3	4	5	6	7	8
'Wild Life'	•	•	•	•	•	•	•	•
Forestry	•	•	•	•	•	•	•	
Limited	•	•	•	•	•	•	•	
Moderate	•	•	•	•	•	•		
Intense	•	•	•	•	•			
Limited	•	•	•	•				
Moderate	•	•	•					
Intense	•	•						
Very Intense	•							

Grazing Cultivation

(c) climatic limitations (e) susceptibility to erosion

(s) soil limitations within the rooting zone (w) excess of water



 Boundary