



RESIDENTIAL OR COMMERCIAL

COMMERCIAL ALLOWING FOR HOUSE + GUEST HOUSE

200 Shattles Rd. – Mineral Wells, TX



STEPHEN
REICH GROUP
WILLIAMS TREW REAL ESTATE

Williamstrew[☆]
A DIVISION OF EBBY HALLIDAY REAL ESTATE, INC.

LISTED BY **STEPHEN REICH GROUP** OF WILLIAMS TREW REAL ESTATE

PROPERTY SUMMARY

DESCRIPTION

Charming 3 Bedroom, 2 bath brick home on 7.16 acres located a short distance to shopping and dining in historical Mineral Wells. Peacefully set back off the road and surrounded by beautiful mature hardwoods with access to a seasonal creek. Huge backyard covered and screened sunroom patio for enjoying your morning coffee and entertaining. Perfect opportunity to make this home your own with minimal upgrades or a great opportunity for a flip, with a full renovation. Brick fireplace surround, original wood cabinetry, and some Parquet floors. Property features a large pasture area for your horses and cattle. This is an incredible corner lot investment opportunity that can be used for a rental or the possibility of a commercial location with approximately 578 SF of road frontage along US Hwy 281. Property is zoned Commercial but allows for a single family dwelling and a guest house.

LOCATION

CITY	Mineral Wells
County	Palo Pinto
Schools	Mineral Wells ISD
Driving Directions	From US Hwy 281 Go east on Shattles. First property on the right

OFFER SUMMARY

List Price	\$449,000
Lot Size	7.16 acres
Utilities	Septic, Well

HIGHLIGHTS

- 1,836 SF BRICK HOME
- 578 FT OF ROAD FRONTAGE
- LARGE PASTURE FOR LIVESTOCK
- ZONED COMMERCIAL
- INVESTMENT OPPORTUNITY
- ALLOWS FOR SINGLE FAMILY

LISTING PRESENTED BY:



PROPERTY WEBSITE LINK:
stephenreichgroup.com/20424386



STEPHEN REICH
817-597-8884
stephen.reich@williamstrew.com

PATTIE MACKIE
817.661.8466
pattie.mackie@williamstrew.com



PARKER COUNTY OFFICE

405 S. FM 1187, STE. 400
ALED0, TX 760089

FARM & RANCH • RESIDENTIAL • COMMERCIAL-DEVELOPMENT • LAND

PROPERTY PHOTOS



STEPHEN REICH – 817.597.8884
PATTIE MACKIE – 817-661-8466



WilliamsTrew[☆]
A DIVISION OF EBBY HALLIDAY REAL ESTATE, INC.

PROPERTY PHOTOS

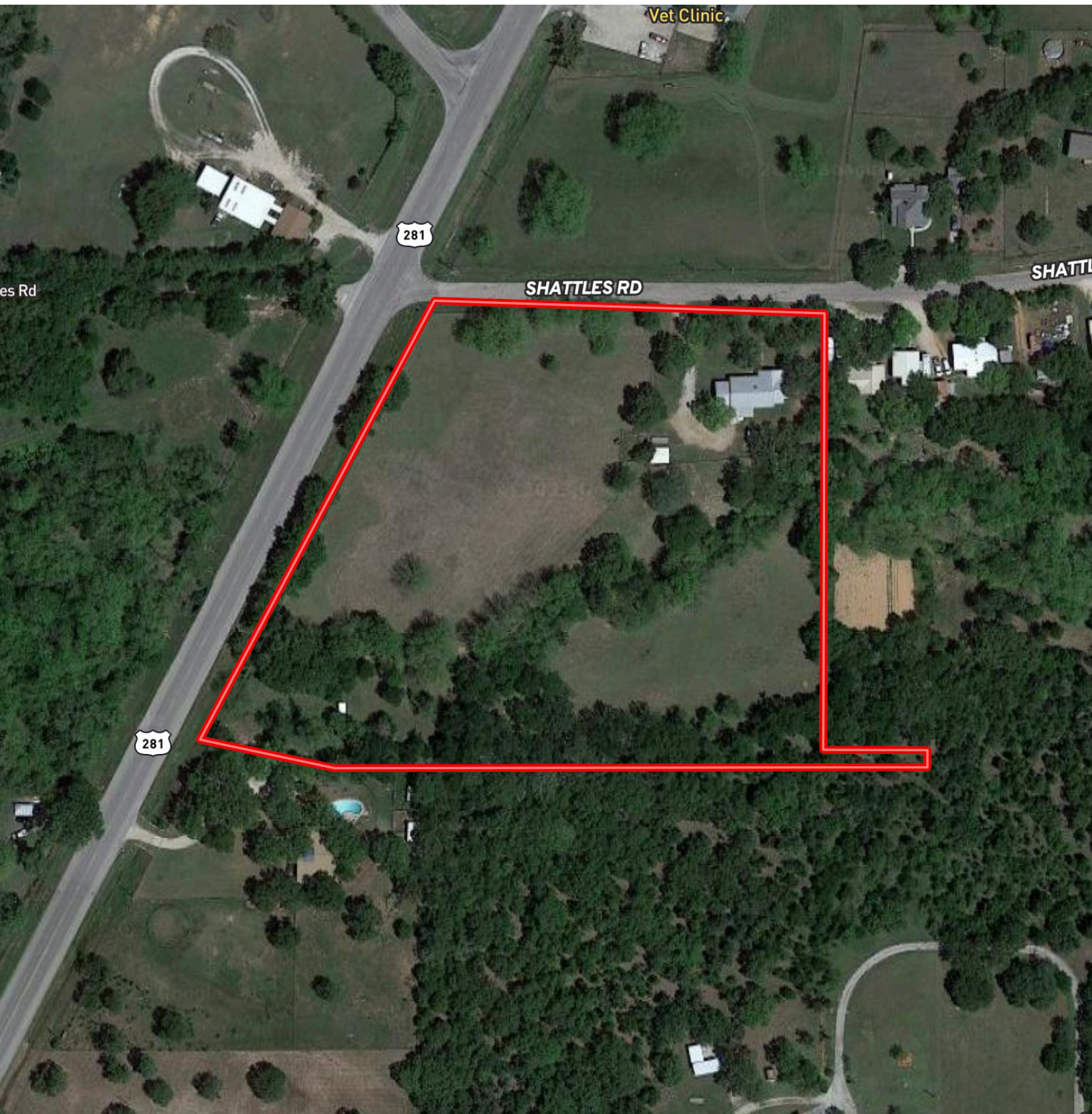


STEPHEN REICH – 817.597.8884
PATTIE MACKIE – 817-661-8466



WilliamsTrew 
A DIVISION OF EBBY HALLIDAY REAL ESTATE, INC.

AERIAL MAP

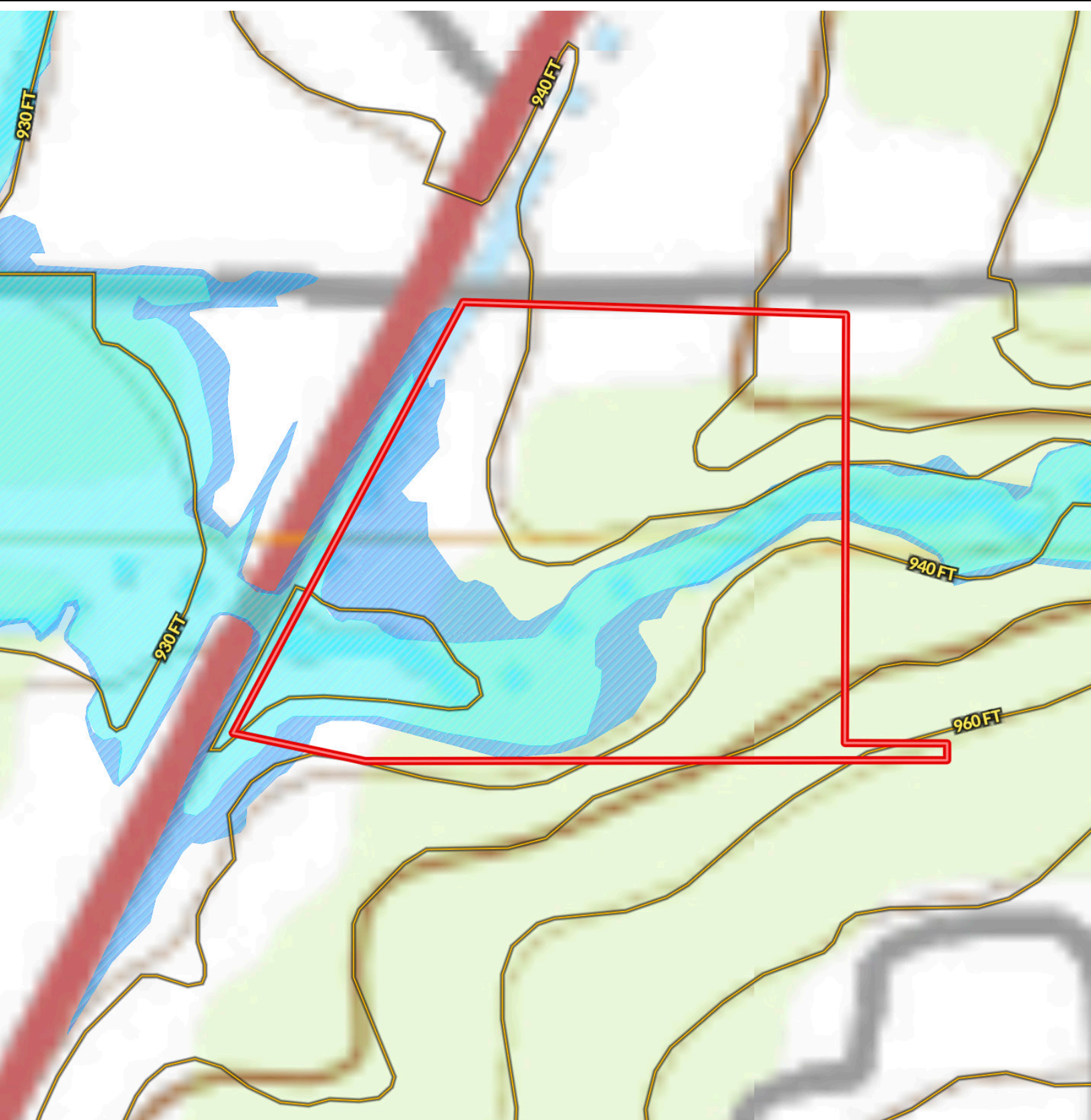


STEPHEN REICH – 817.597.8884
PATTIE MACKIE – 817-661-8466



WilliamsTrew 
A DIVISION OF EBBY HALLIDAY REAL ESTATE, INC.

CONTOUR LINES & FLOODPLAIN



STEPHEN REICH – 817.597.8884
PATTIE MACKIE –817-661-8466

