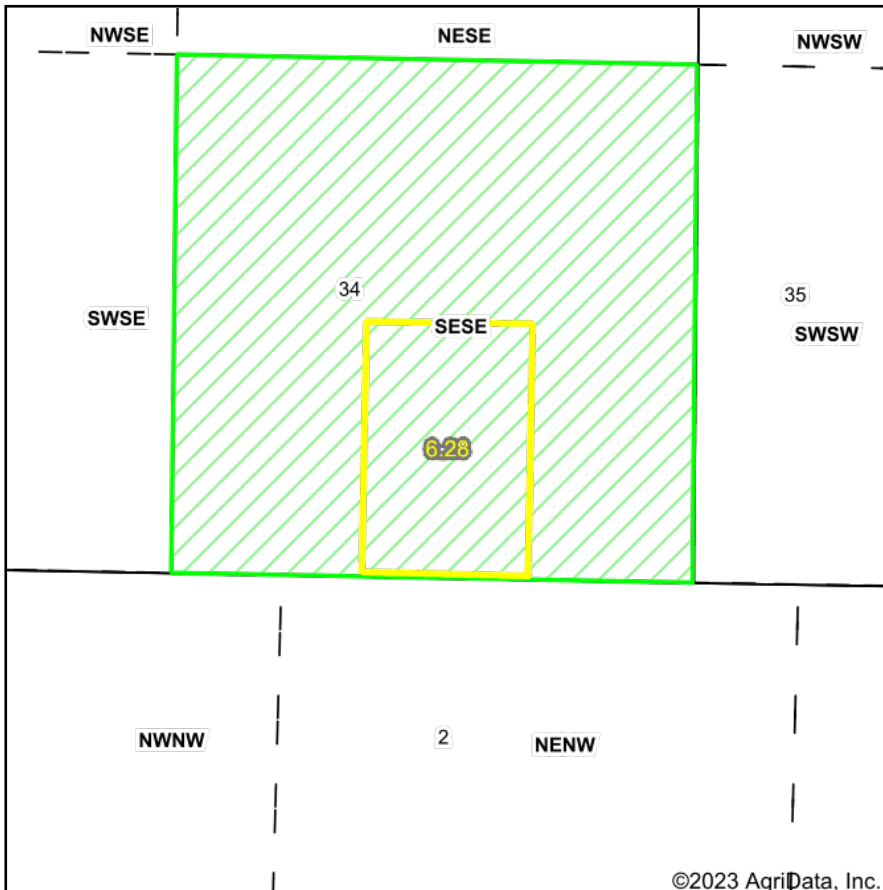


PLSS Legal Description



Acres: **6.28**
Date: **10/4/2023**
Township: **Ten Mile**
County: **Miami**
State: **Kansas**



Maps Provided By:
surety
CUSTOMIZED ONLINE MAPPING
© AgriData, Inc. 2023 www.AgriDataInc.com



PLSS Source: **Various State Sources**

PLSS Note: **No Government Lots. Quarters created by equally splitting the sections**

Short Legal:

PT SESE 34-15S-24E

Long Legal:

PART OF THE SE1/4 SE1/4 OF SECTION 34, TOWNSHIP 15 SOUTH, 24 EAST, MIAMI COUNTY, KANSAS