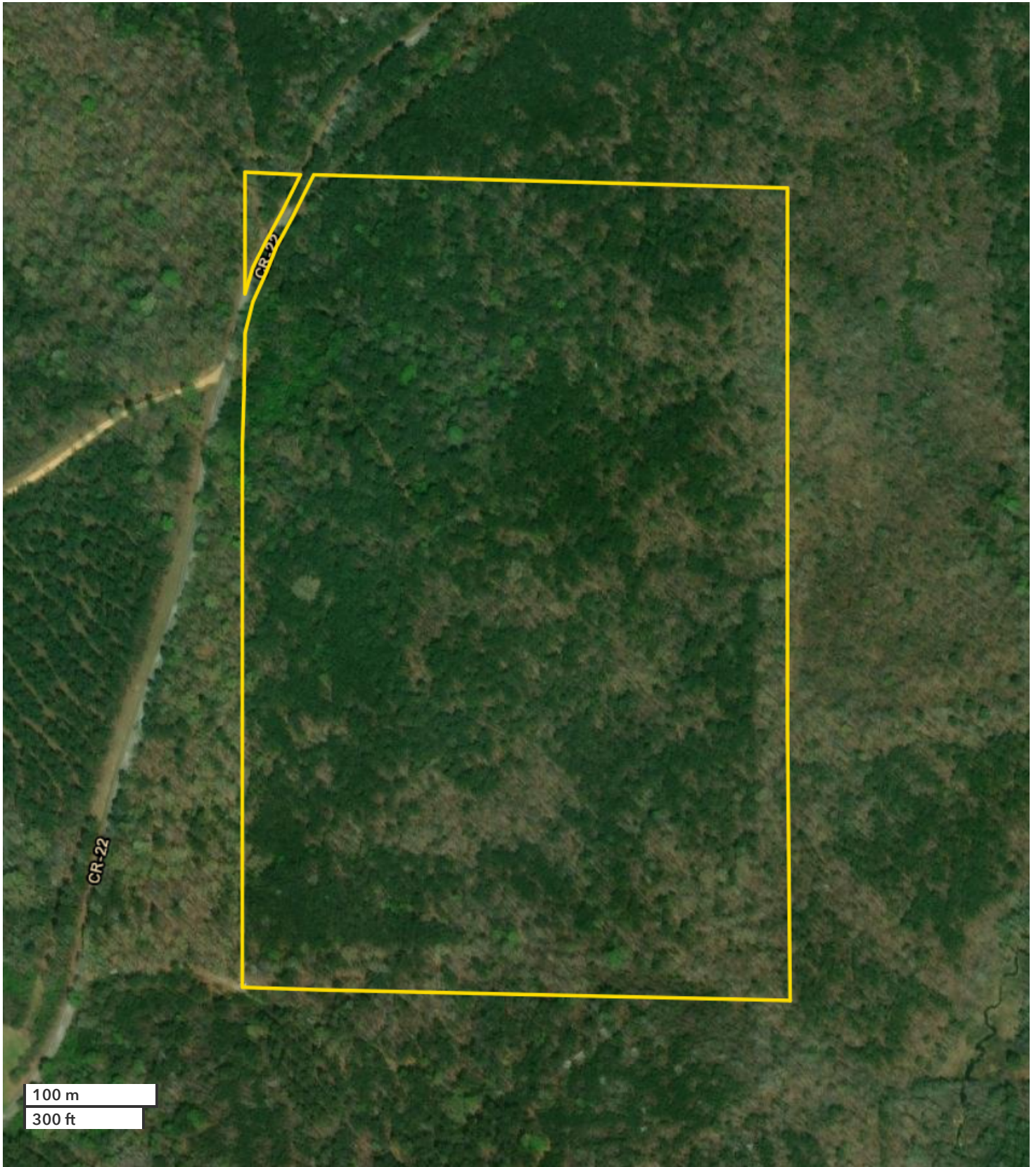




ALLAN HIXON
Land Professional, Registered
205-343-2144
Ahixon@nationalland.com
205-799-1422
205-343-2110

JOSH HIXON
Land Professional, Registered
864-331-1610
Jhixon@nationalland.com
205-361-0946
205-343-2110

Detroit Timber Investment, Hunting, and Homesite
Marion County, AL
60 +/- Acres



All boundary lines noted in pictures, aerials or maps should be considered estimates and not relied on as legal documents or descriptions.