

Middle Cypress Creek | 140 ± Acres



For Sale

\$504,000

Facts and Features

Lauderdale County, Alabama

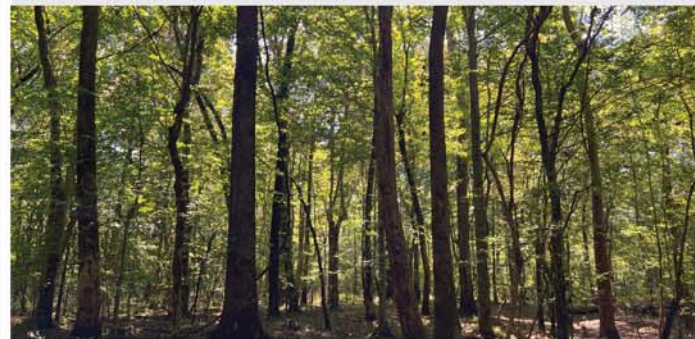
0 AL-157, Florence, AL 35633

140 ± Acres

Best Use: Recreational

About the Property

This 140± acre property is located just 10 minutes north of Florence, Alabama. The property sits in a bottom land with a mix of mature timber. There are two creeks featured on the property, Middle Cypress Creek, and Oakley Springs Branch. Running along the west boundary line is Middle Cypress Creek which stays wet all year round giving the property lots of recreational opportunities. Oakley Springs Branch runs from the northeast corner of the property winding through the landscape until it exits the property in the southwest corner. There is an abundant amount of wildlife on the property and being in an area known for hunting and fishing this is truly an outdoorsman's dream. At the seller's request, all potential buyers need to be accompanied by a licensed real estate agent. Let us know and we'll be happy to show you this beautiful property.

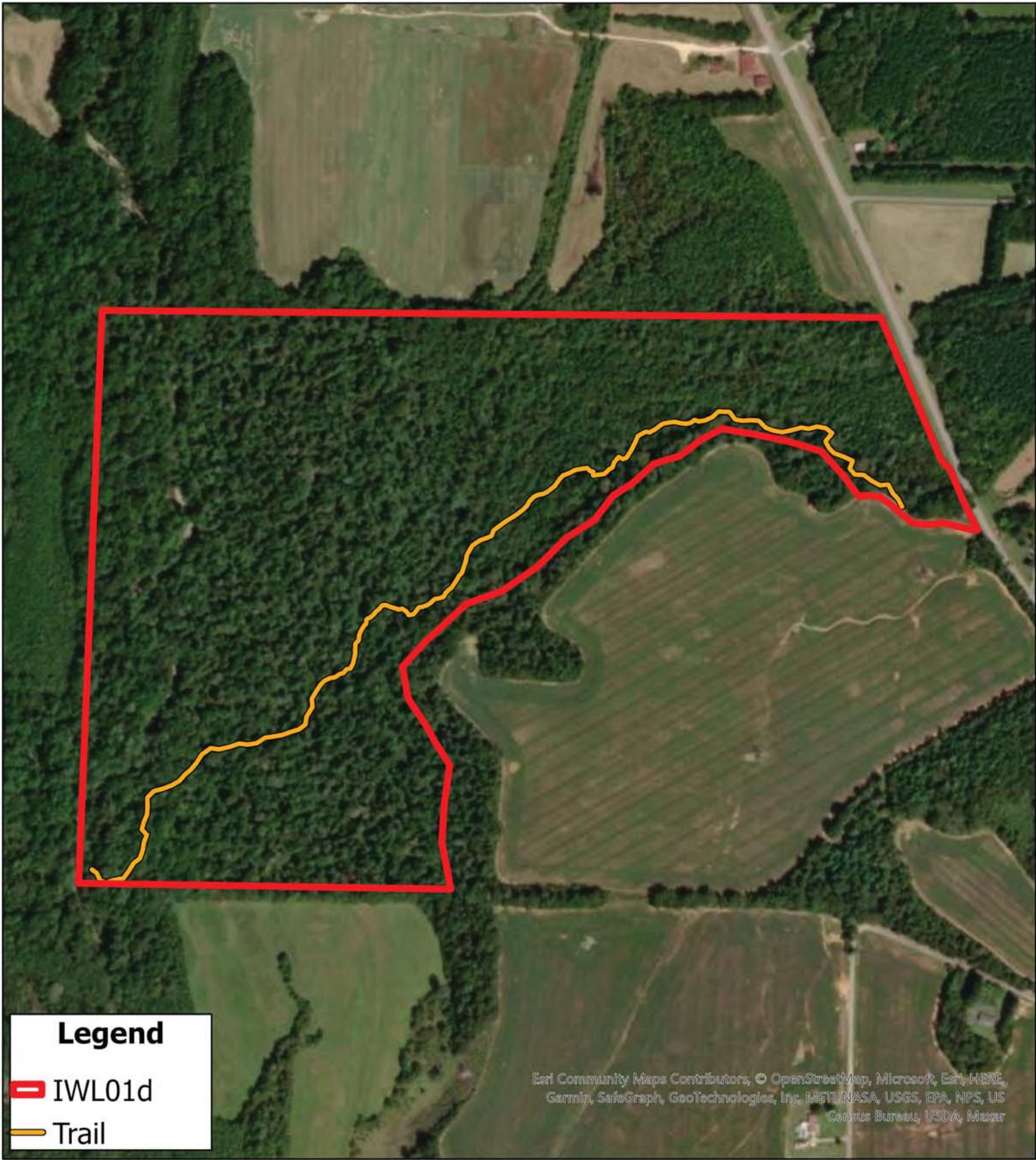


**SOUTH MAIN
LAND REALTY**

Hayden Reed

Office: (256) 383-8990 | Cell: (256) 740-2494
soldbyhayden@southmainrealty.com

Stephan Tomlinson, Broker



Legend

-  IWL01d
-  Trail

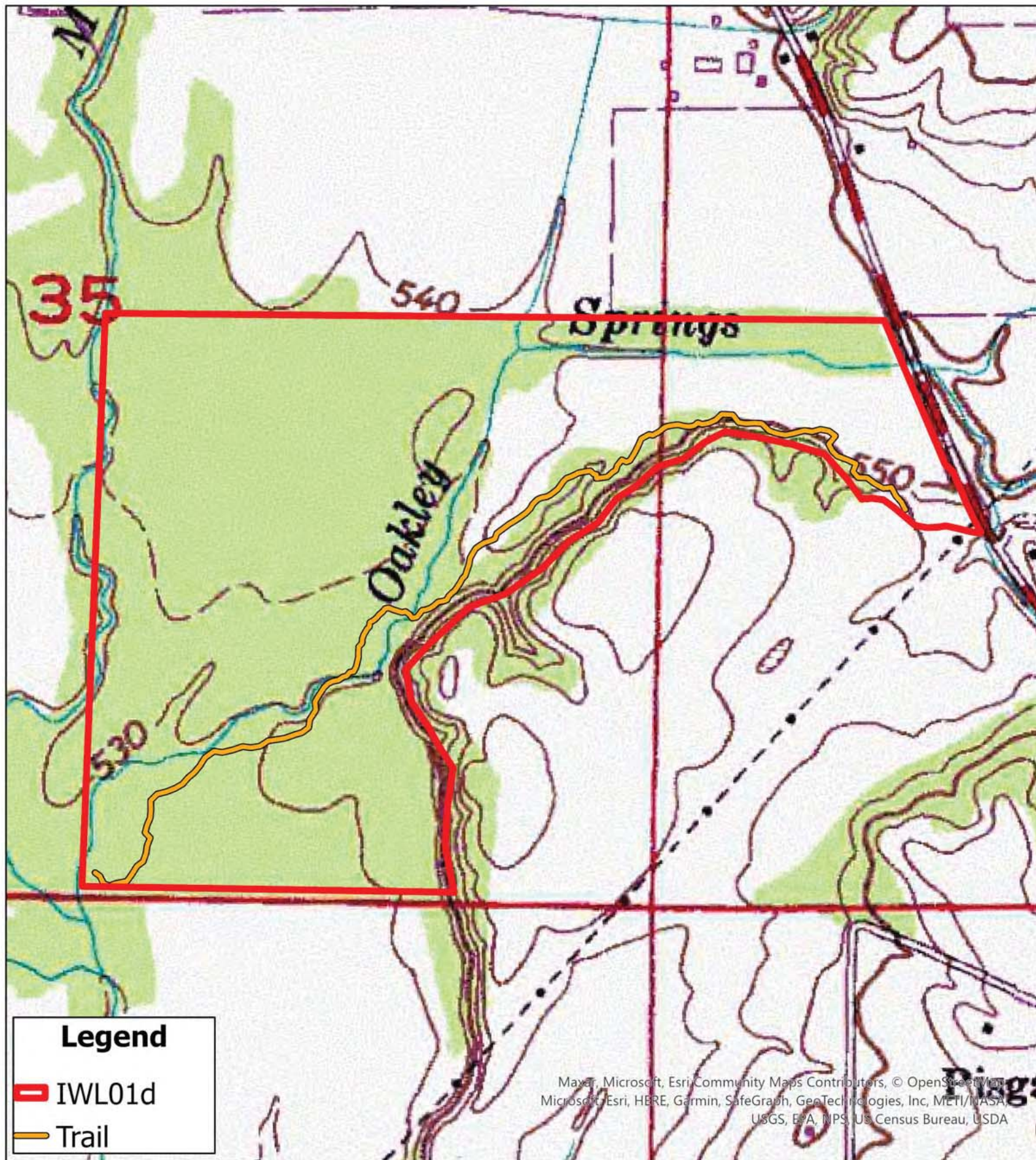
Esri Community Maps Contributors, © OpenStreetMap, Microsoft, Esri, HERE, Garmin, SwireGraph, GeoTechnologies, Inc, METI/NASA, USGS, EPA, NPS, US Census Bureau, USDA, Maxar

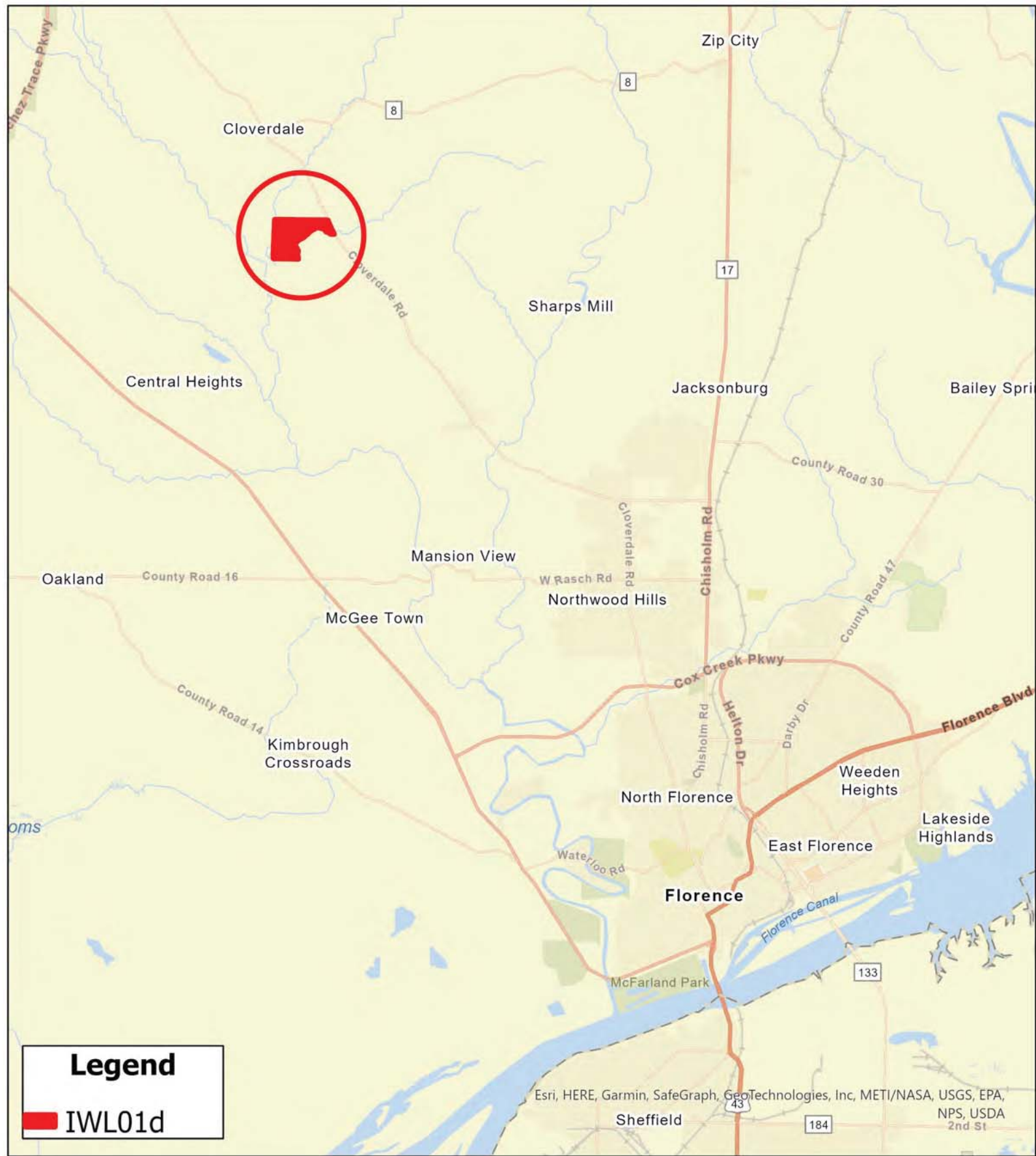
South Main Realty
(256) 383-2990

IWL01d
Lauderdale County, AL
Aerial



0 440 880 1,320 Feet



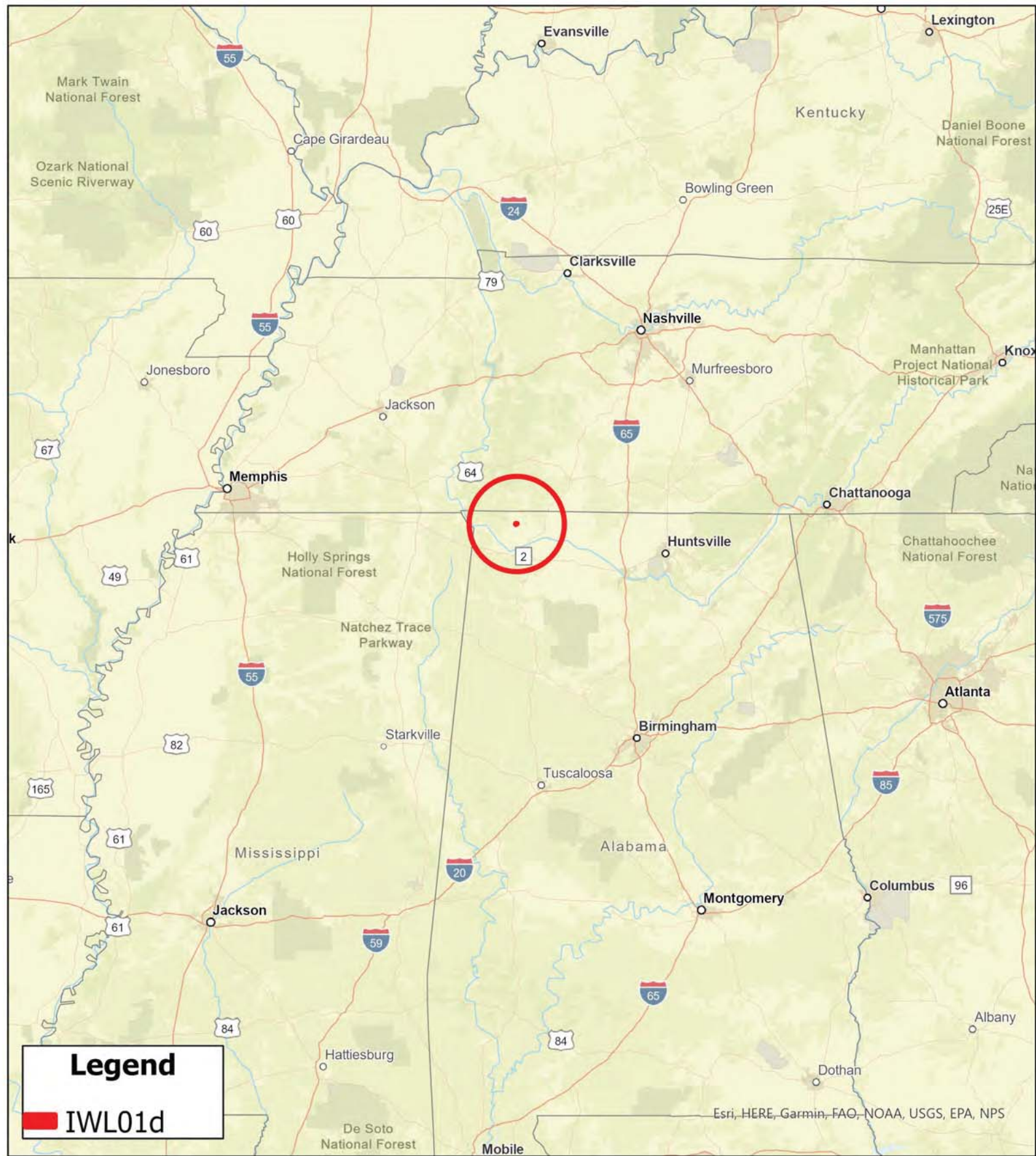


IWL01d
Lauderdale County, AL
Local Roads

South Main Realty
(256) 383-2990



0 1 2 3 Miles



IWL01d
Lauderdale County, AL
General Area

South Main Realty
(256) 383-2990

