

# Casey Field | 94 ± Acres



## For Sale

\$657,720

## Facts and Features

**Lauderdale County, Alabama**

0 AL-157, Florence, AL 35633

94 ± Acres

Best Use: Farm

## About the Property

This 94± acre property is located just 10 minutes north of Florence, Alabama. There are approximately 74 tillable acres with around 2,300 feet of high voltage line running over the crop field. This property also has quite a history being the home to the Casey Cemetery where several members of the family currently lay at rest. At the seller's request, all potential buyers need to be accompanied by a licensed real estate agent. Let us know and we'll be happy to show you this beautiful property.



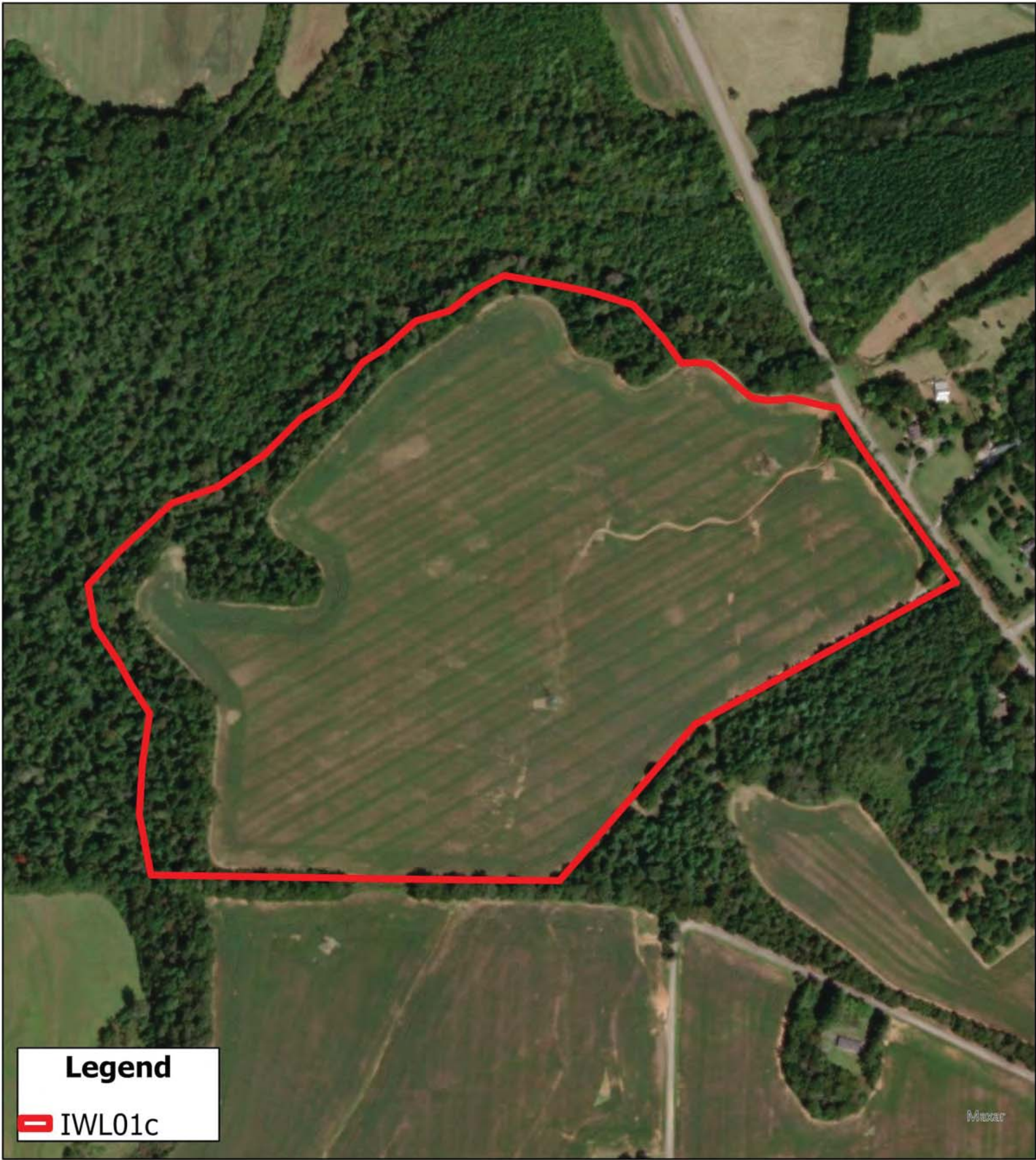
**SOUTH MAIN  
LAND REALTY**

**Hayden Reed**

Office: (256) 383-8990 | Cell: (256) 740-2494  
soldbyhayden@southmainrealty.com

Stephan Tomlinson, Broker





**Legend**  
IWL01c

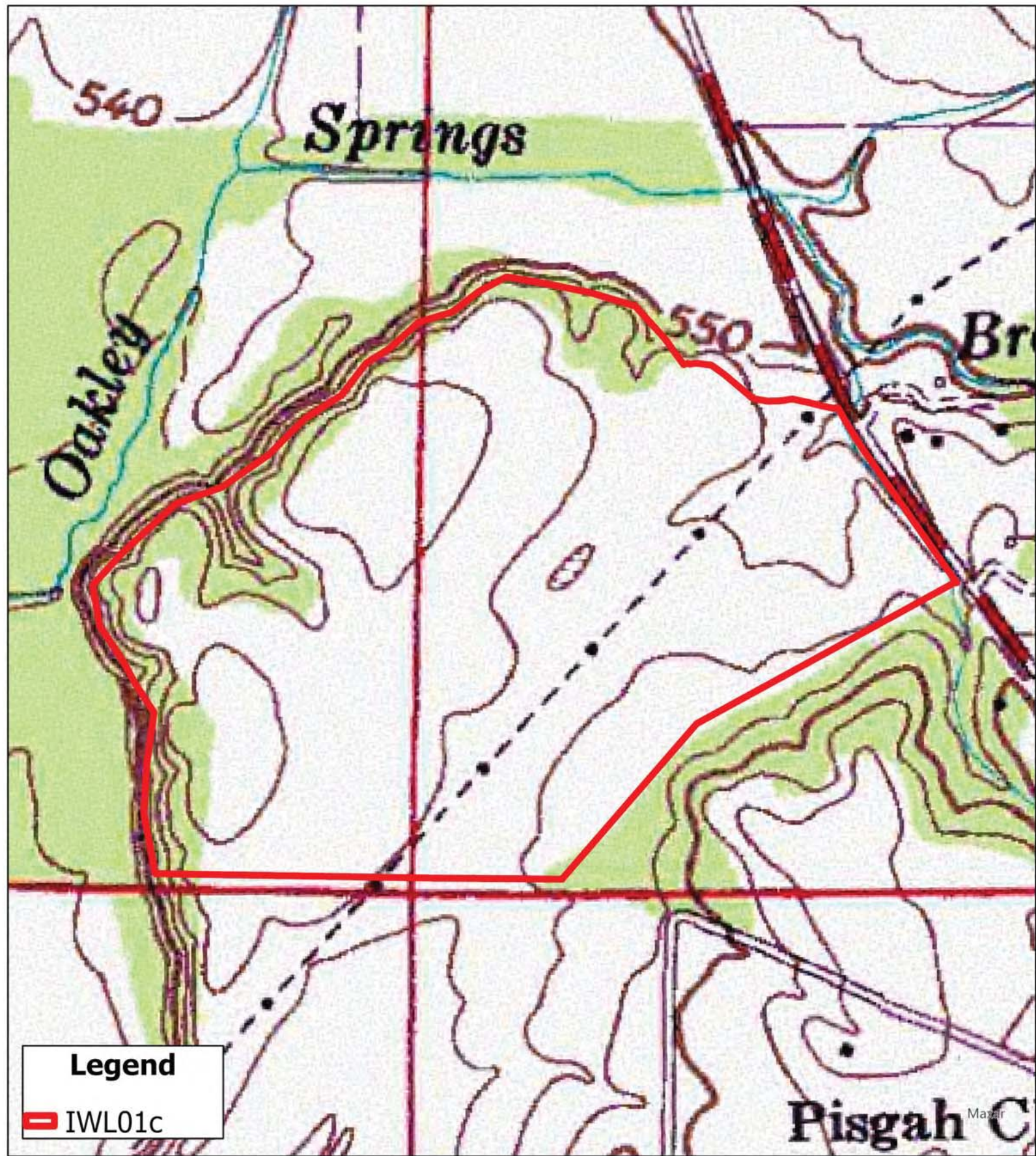
IWL01c  
Lauderdale County, AL  
Aerial

South Main Realty  
(256) 383-2990



0 340 680 1,020 Feet





IWL01c  
Lauderdale County, AL  
Topography



0 340 680 1,020 Feet

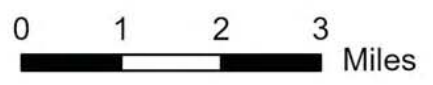
South Main Realty  
(256) 383-2990

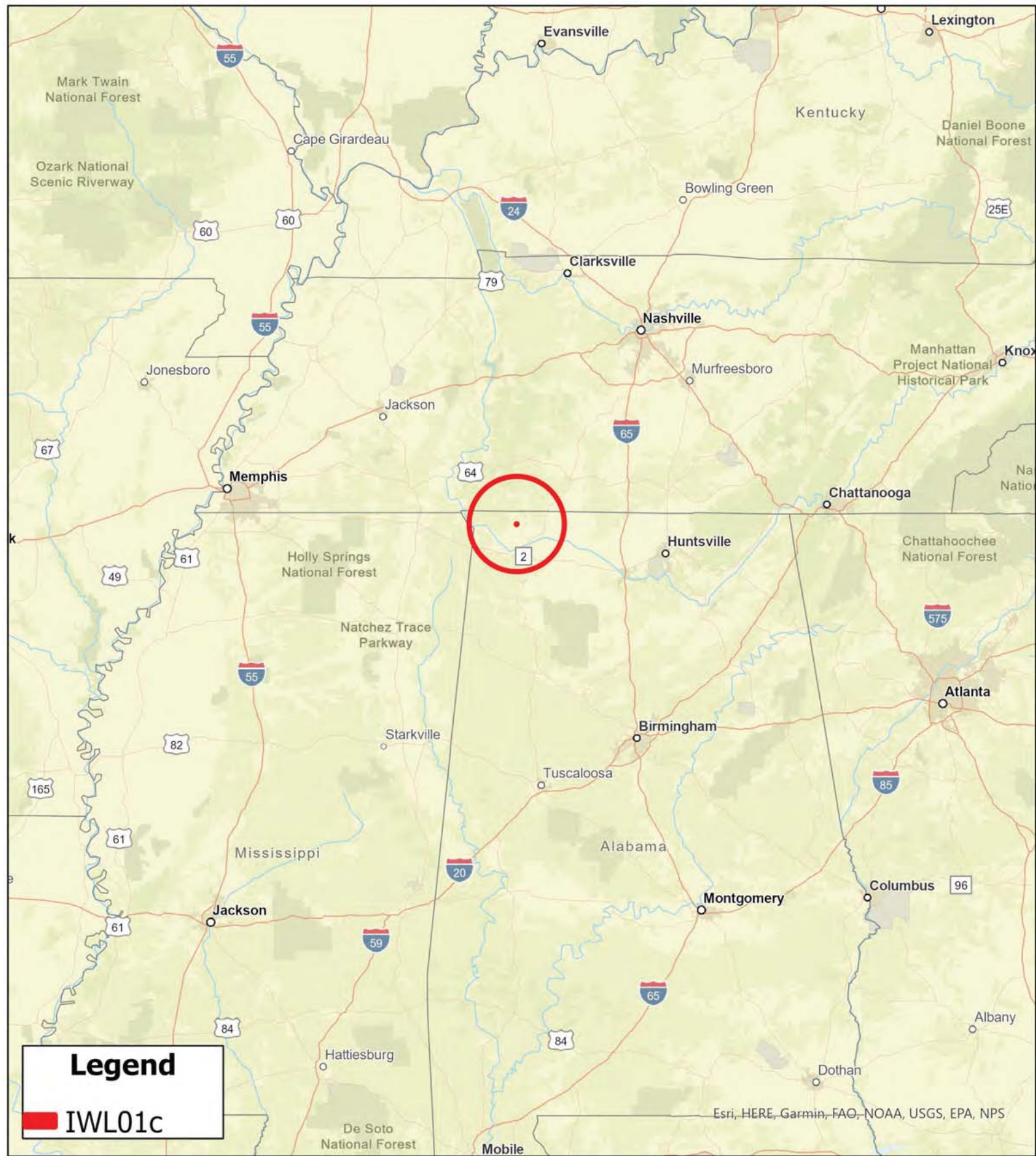




IWL01c  
Lauderdale County, AL  
Local Roads

South Main Realty  
(256) 383-2990





**IWL01c**  
**Lauderdale County, AL**  
**General Area**



0 40 80 120 Miles

South Main Realty  
(256) 383-2990