



# Fall 2023 AUCTION

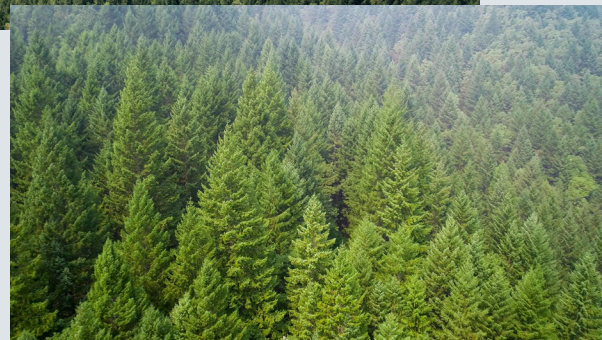
*NO STARTING BIDS AND NO HIDDEN RESERVES!*

## 326± Acre Graves Creek Road Timber Tract

*Josephine County, Oregon*



- Estimated 4.9 million board feet of 60± year old timber
- 75% Douglas-fir with balance mix of incense cedar and pine
- 7± miles east of I-5 Exit 71 at Sunny Valley
- Proximity to competitive log markets
- Two other 40± and 57± acre tracts in Josephine and Curry Counties \$82,500 and \$175,000



**PUBLISHED RESERVE - \$1,000,000**

**SEALED BIDS DUE NOVEMBER 15, 2023**

*Broker Cooperation Invited*

**Color Catalog #2304 and Bid Package #111**

**1-800-845-3524**

*or info@rmnrw-auctions.com*

Auction Conducted By:

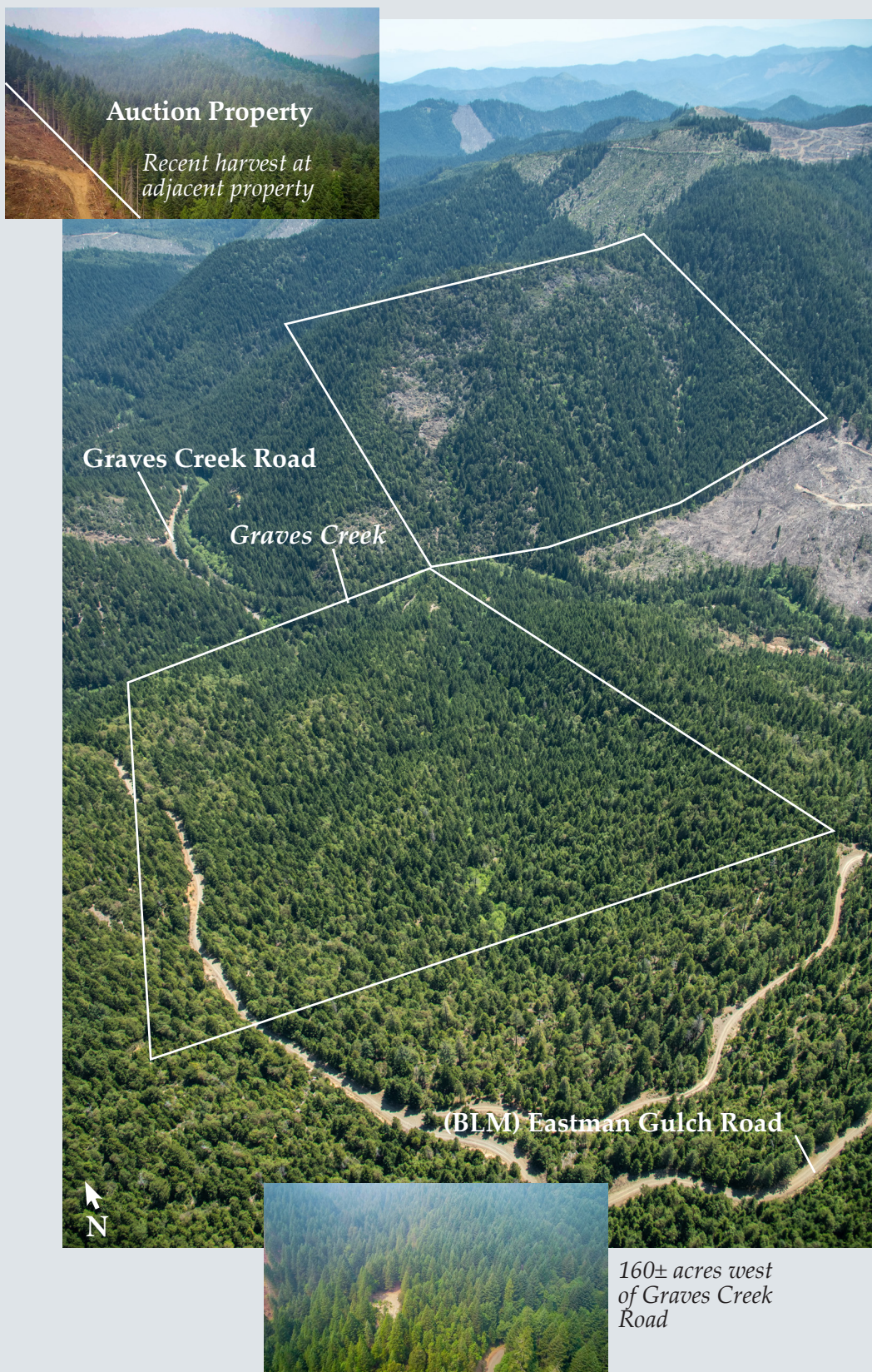
**Realty Marketing/Northwest**

2310 NW Everett Street, Suite 250, Portland, Oregon 97210



WA AUCTION LICENSE #1917





**PUBLISHED RESERVE - \$1,000,000**

**SEALED BIDS DUE NOVEMBER 15, 2023**

*Broker Cooperation Invited*

**Color Catalog #2304 and Bid Package #111**

**1-800-845-3524**

*or info@rmnrw-auctions.com*

Auction Conducted By:



**Realty Marketing/Northwest**

2310 NW Everett Street, Suite 250, Portland, Oregon 97210

WA AUCTION LICENSE #1917