

# 749 State Route 227 | 42 ± Acres



## For Sale

\$299,000

## About the Property

Escape the hustle and bustle of the city and kick your feet up on the screened in back porch and beautiful country views this home has to offer. This classic style cabin offers 1,700 SF of living area with a mix of pine and poplar wood floors, including 2 beds, 2 baths, and a loft. The open floor plan has a beautiful kitchen, separate dining area, and relaxing sitting areas on the front porch, back porch, and deck off the primary bedroom. The cabin was constructed in 2007 and used stones and wood from a rustic cabin that occupied the site for generations. Sit in front of the present fireplace and you will feel the history. The cabin is nestled on 40 acres of pasture and timberland and includes a spring that originates on the property, wandering down a timberland draw to the south boundary. Let us know when you would want to come explore – we'd enjoy taking you around.

South Main Realty is Co-marketing with South Main Land Realty

## Facts and Features

Franklin County, Alabama

749 State Route 227 Spruce Pine, AL 35585

42 ± Acres

Best Use: Residential, Farm, Recreational



**SOUTH MAIN  
REALTY**

**Hayden Reed**

Office: (256) 383-8990 | Cell: (256) 740-2494  
soldbyhayden@southmainrealty.com

Stephan Tomlinson, Broker



# 749 State Route 227 | 42 ± Acres



**SOUTH MAIN  
REALTY**

**Hayden Reed**

Office: (256) 383-8990 | Cell: (256) 740-2494  
soldbyhayden@southmainrealty.com

Stephan Tomlinson, Broker





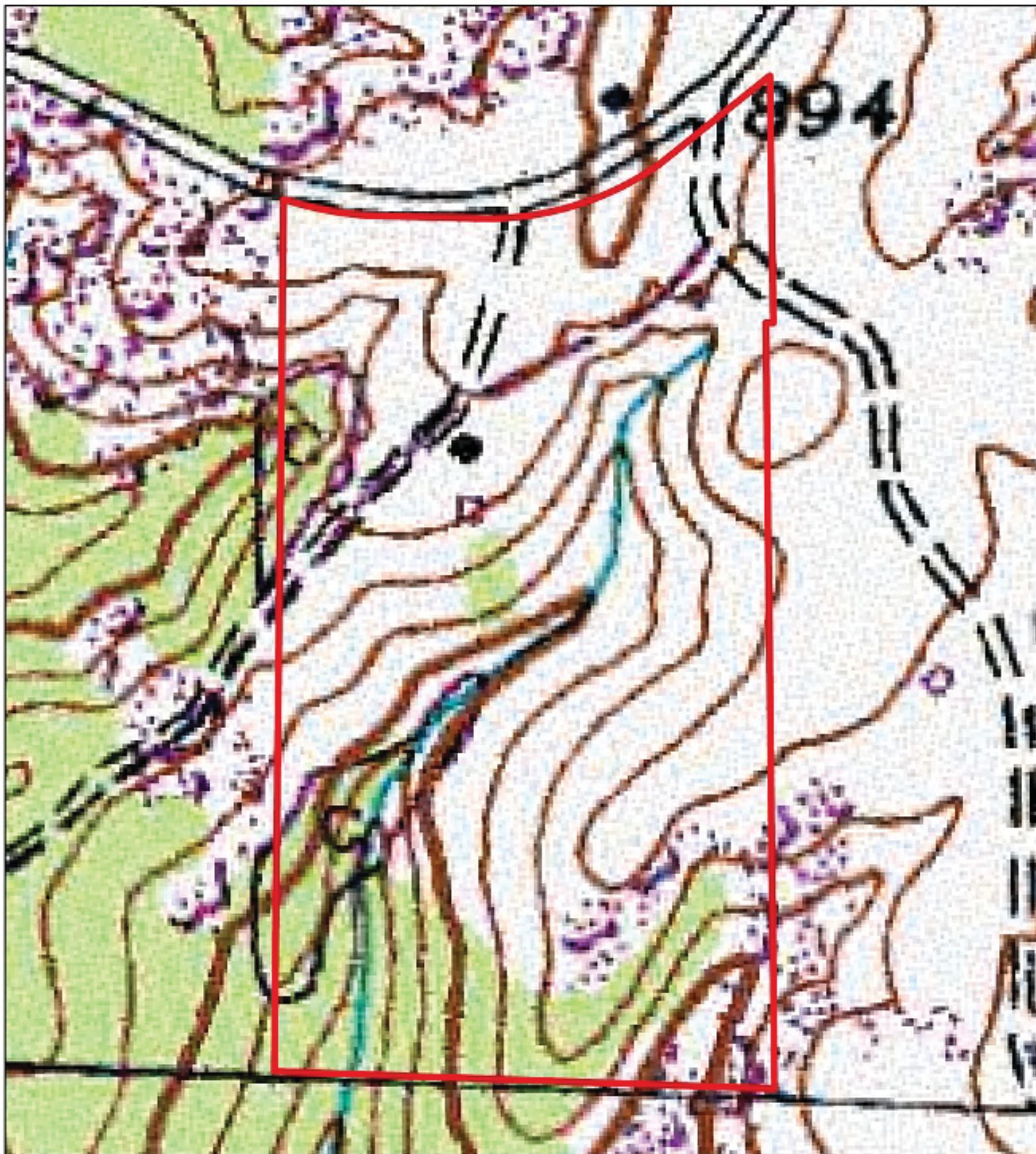
DDW01  
Franklin County, AL  
Aerial

South Main Realty  
256-383-2990



0 200 400 800  
Feet





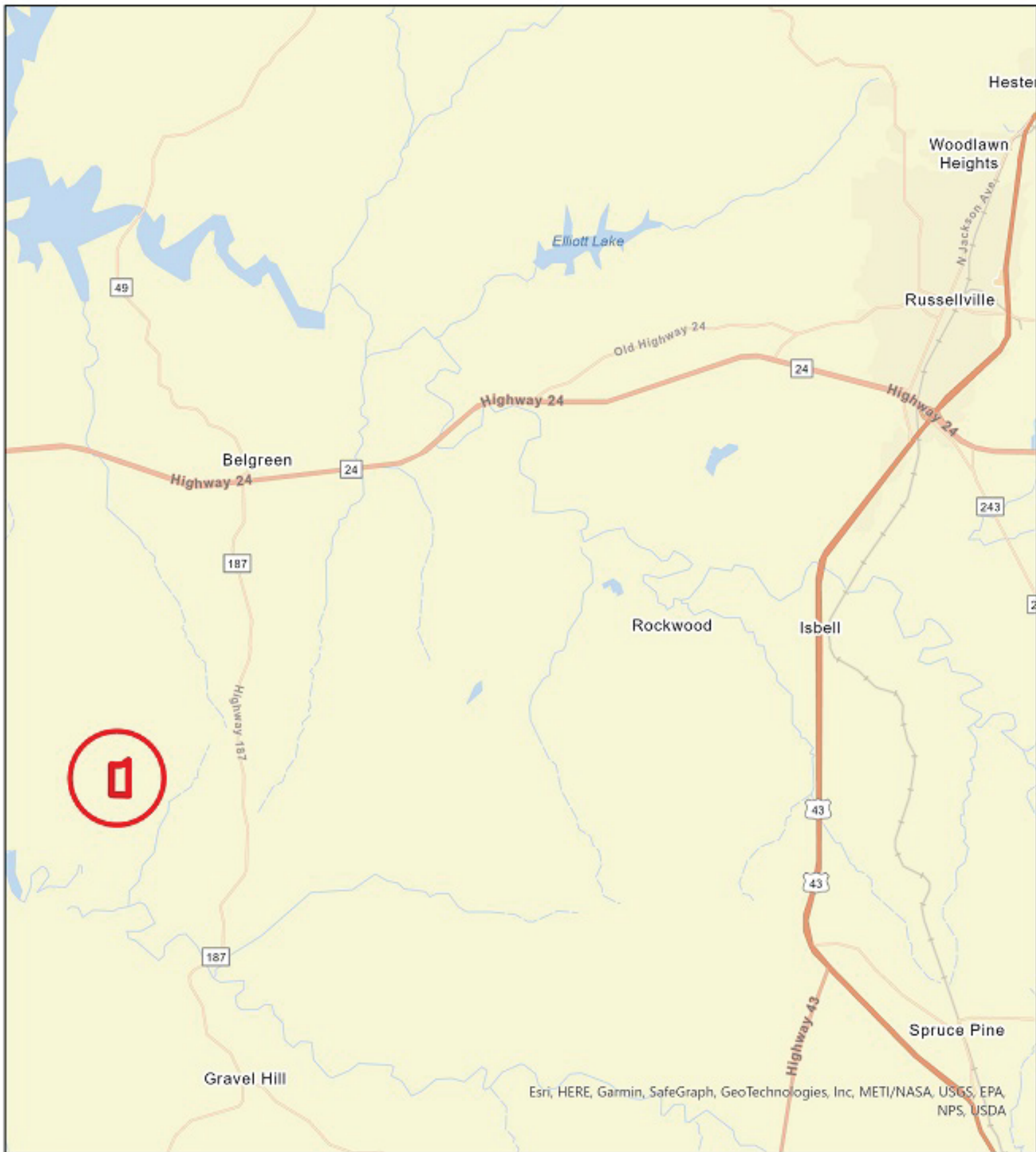
DDW01  
Franklin County, AL  
Topo

South Main Realty  
256-383-2990



0 200 400 800  
Feet

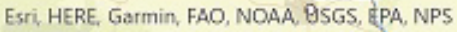




DDW01  
Franklin County, AL  
Local Roads

South Main Realty  
256-383-2990





DDW01  
Franklin County, AL  
General Area



0 37.5 75 150  
Miles