



"Your One Stop Real Estate Shop"

LAND & TIMBER | RESIDENTIAL | COMMERCIAL | OIL & GAS

- * ONLY \$168,000.00
- * 40 acres +/- Will Divide
South 10 acres +/- @ \$55,000.00
- * Pearl River area
Deed Restrictions May Apply
- * Great Location, easy access!

Country Living at it's BEST!!!

Gently Rolling 40 ac +/- Great Hunting!!!

- This is your HAPPY PLACE!
- Beautiful rolling hills with young pines
- Stock Pond
- Great Road Frontage & Access
- Great Hunting (Deer & Turkey)
- Power & Water Available
- Address: 15055 MS Hwy 472, Hazlehurst, MS 39083



Gary W. Stewart

MOBILE: 601-757-3009

gwstewart@4cornerprop.com



10 ac +/- South of Road

Office: 601-952-2828

Fax: 601-510-9446

www.4cplandandhomes.com



Will Divide

- North 30 acres- \$135k
- South 10 acres- \$55k


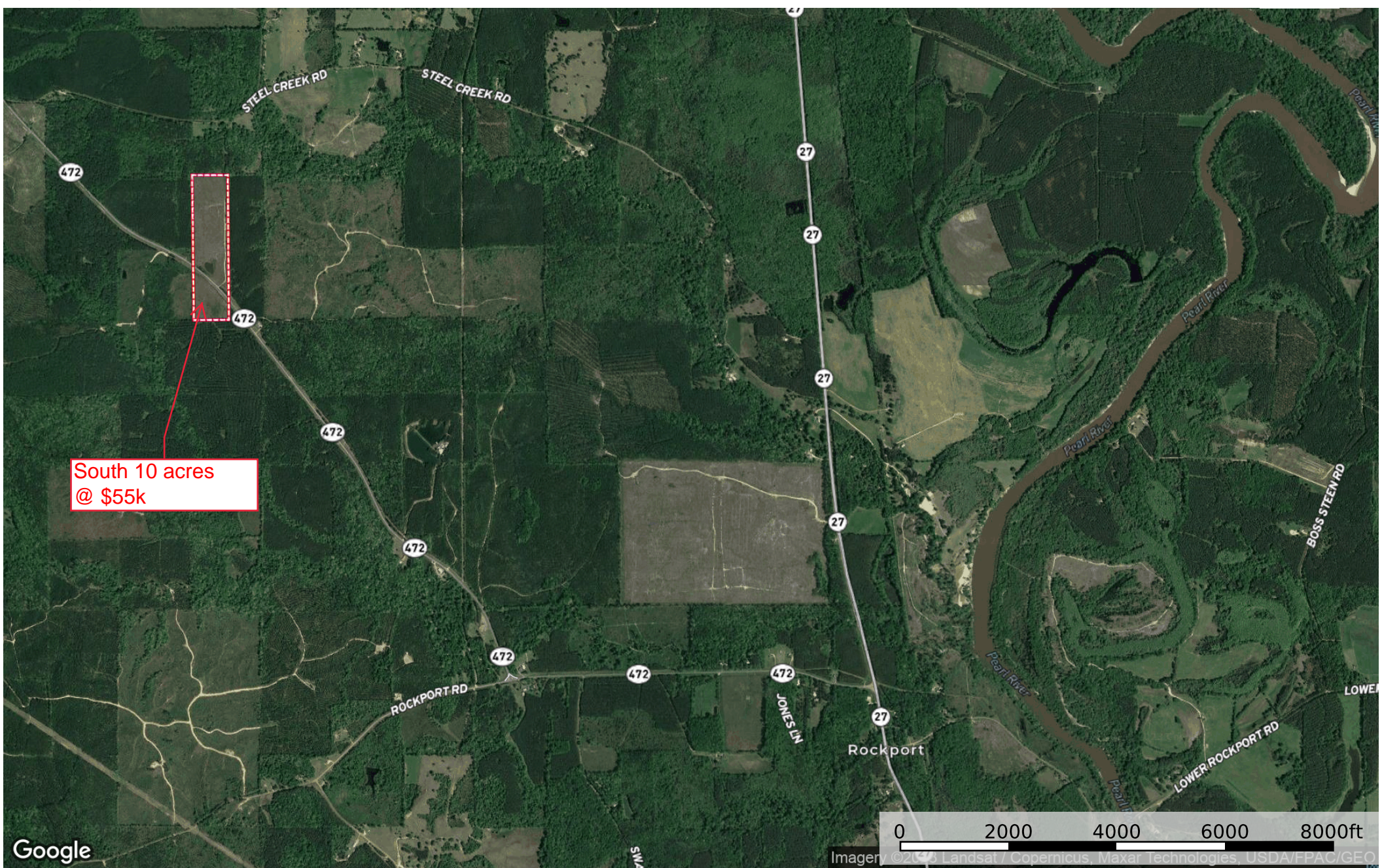


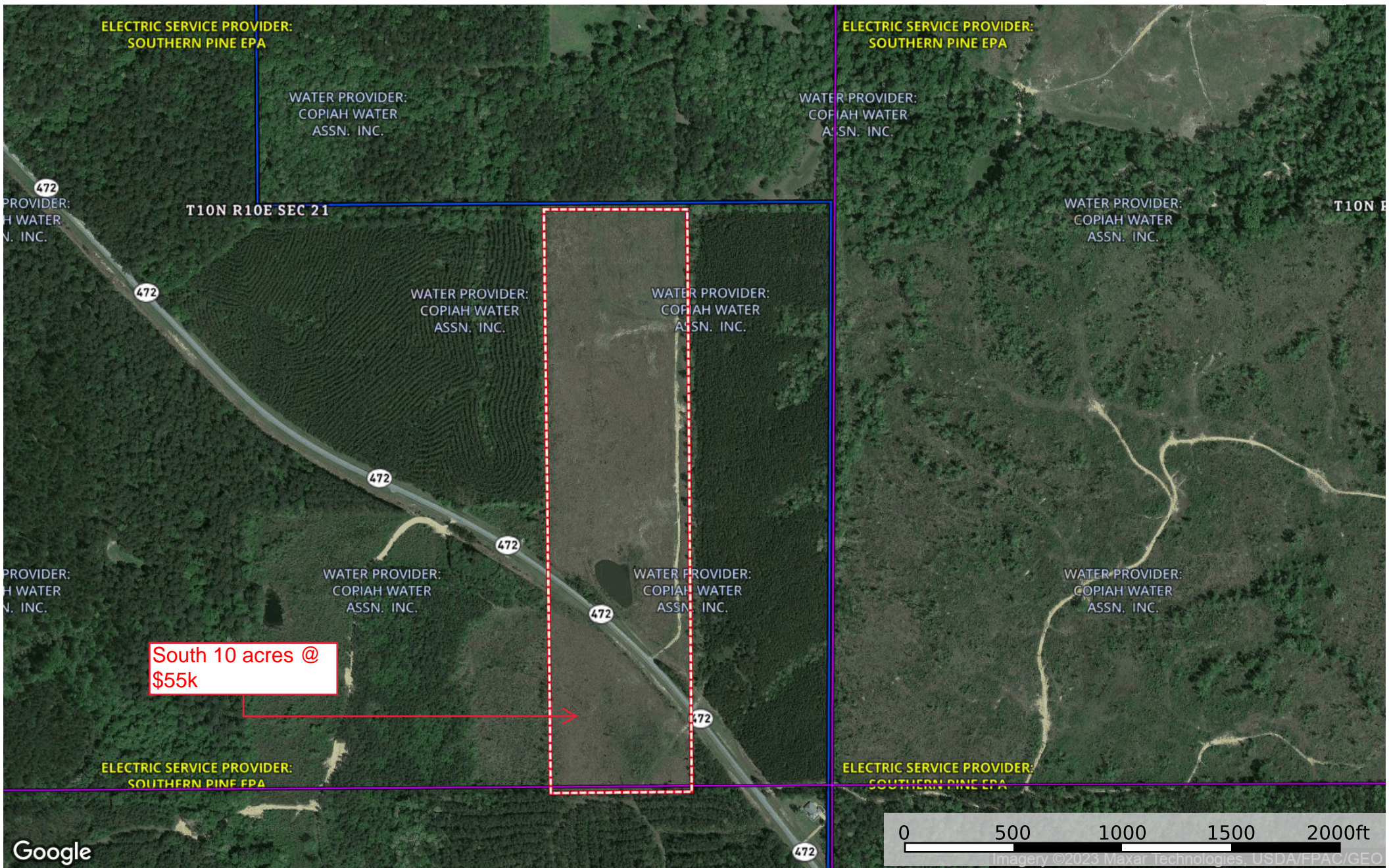
Excellent Home Sites

- Great Community
- Abundant Wildlife

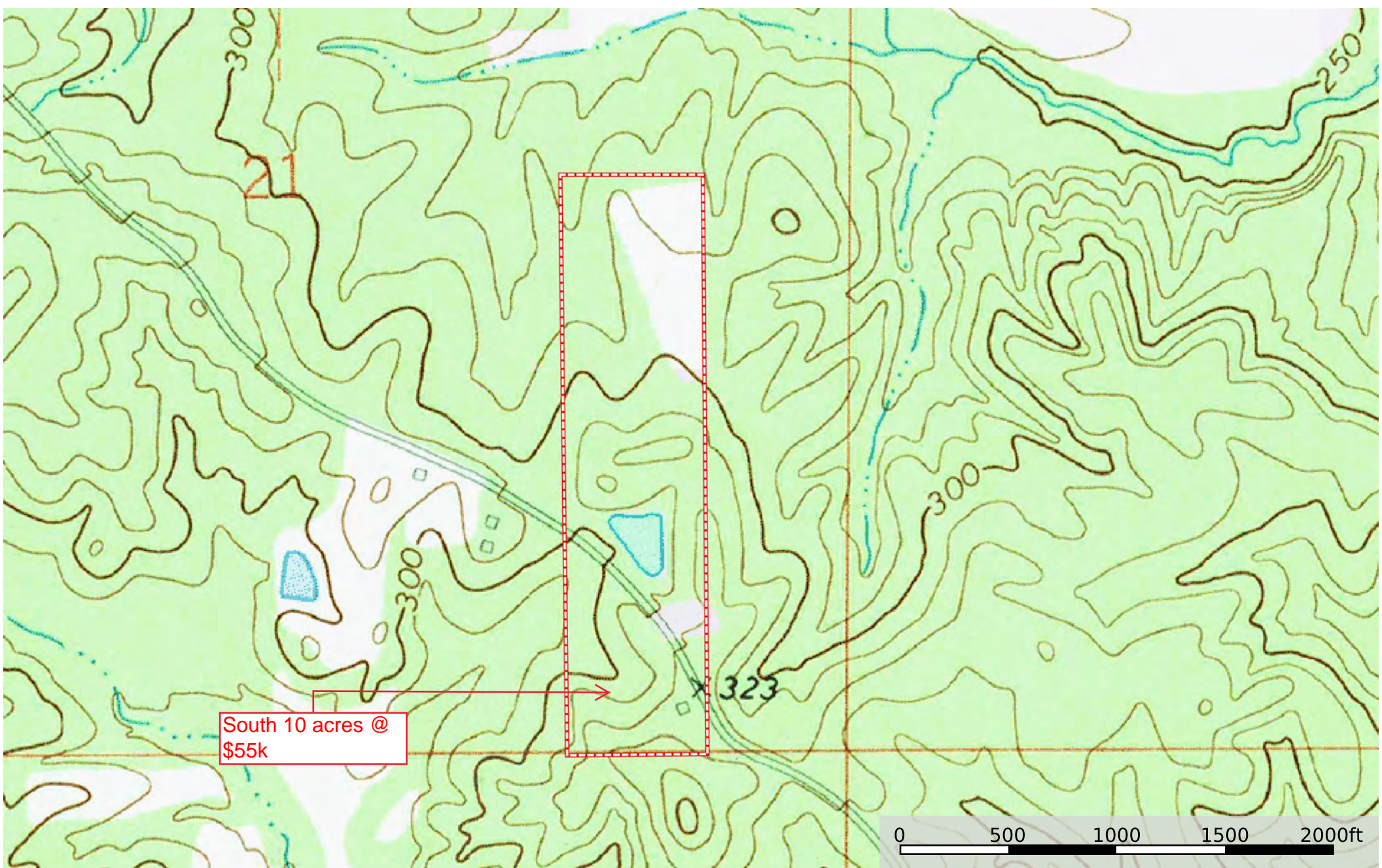


Mississippi, AC +/-


 Boundary



Boundary Water Service Areas Electric Service Areas



South 10 acres @
\$55k

 Boundary