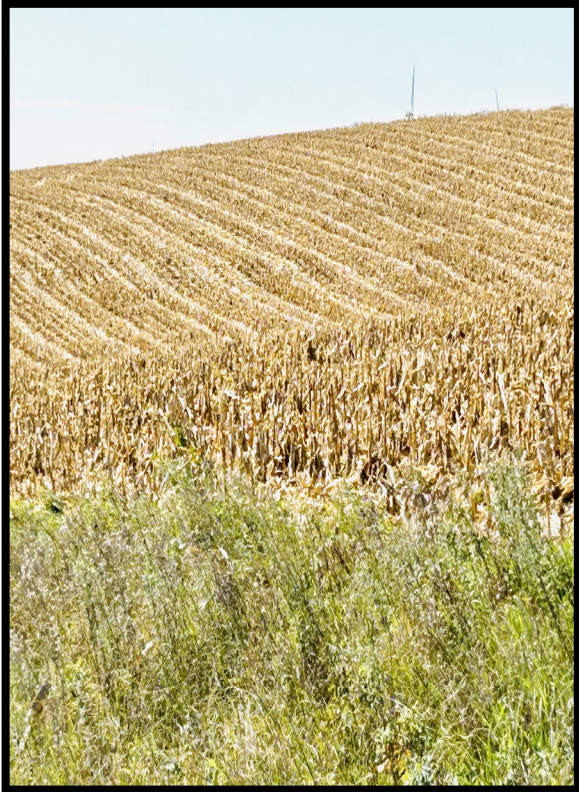


**Atchison County, MO Row Crop
23901 160th St.
Tarkio, MO 64491**



TRACT 2: S27-T66N-R40W

Est. Price:
\$11,000 / ac

Est. Total Acres:
157 ac +/-

Tillable: 138 +/-
Per EZ156

Est. Annual Tax:
\$4.99 / ac

Windmill lease (Ameren):
Exp. 2036: \$3,927 / est. annual income

Directions:

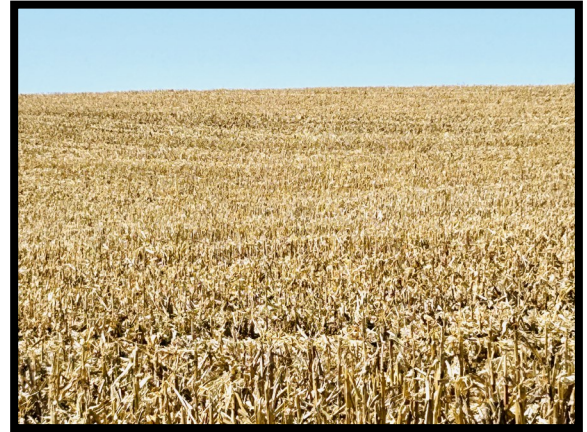
23901 160th St. Tarkio, MO

From Tarkio, MO. North on US59 to 160th St.
West one mile. Farm is on north side of 160th.

Description:

Quality soils with cash rent income. Includes est
100'x40' machine shed and est. 16,000 bu grain
storage (two grain bins).

Farm is on the north side of Tract 1, split by a
road (155.7+/- ac)



Possession subject to tenant lease expiring Dec. 2025



Enterprise Realty & Auction, LLC

121 E. 4th St.

Maryville, MO 64468

Phone (660) 582-7160 Fax (660) 582-7162
property@entrealty.com www.entrealty.com

Atchison County, MO Row Crop 23901 160th St. Tarkio, MO 64491

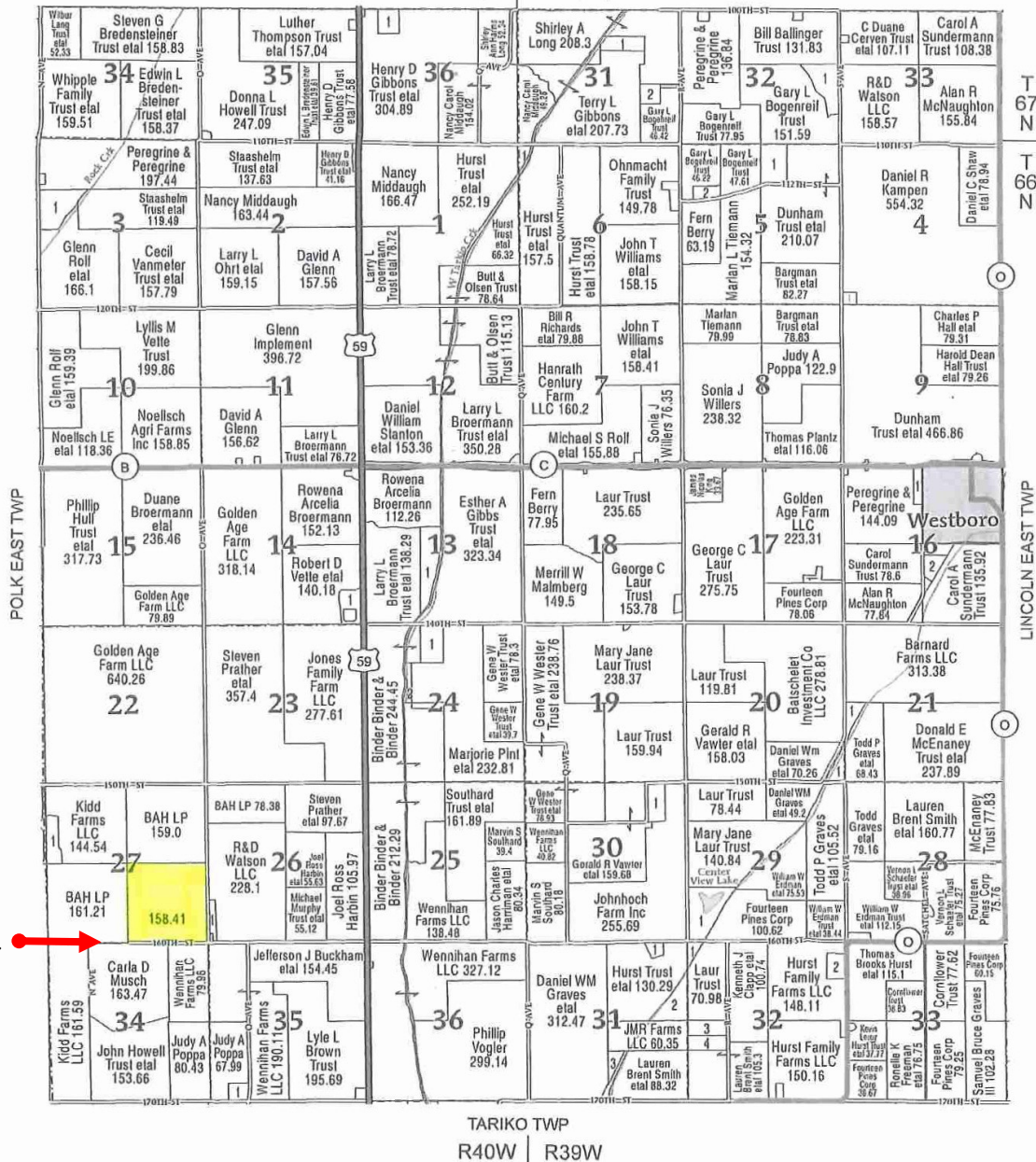
T2

T-66-67-N

LINCOLN WEST PLAT

R-39-40-W

(Landowners)
FREMONT CO, IA PAGE CO, IA



Enterprise Realty & Auction, LLC

121 E. 4th St.

Maryville, MO 64468

Phone (660) 582-7160 Fax (660) 582-7162

property@entrealty.com www.entrealty.com

Atchison County, MO Row Crop 23901 160th St. Tarkio, MO 64491

T2



All Measurements are
For FSA Programs Only
Wetland Determination Identifiers

- Restricted Use
- Limited Restrictions
- Exempt from Conservation Compliance Provisions

Disclaimer: Wetland Identifiers do not represent the
size, shape or specific determination of the area.
Refer to your original determination (CEA-026 and attached maps)
for exact wetland boundaries and determinations, or contact RECS.

Atchison Co. FSA

C=CORN-YEL-GR; CW=CORN-WHE-GR
POP=CORN-POP-GR; SB=SOYBN-COM-GR
WHT=WHEAT-HARD RED WINTER-GR
P=MIXFG-IGS-GZ; HAY=MIXFG-IGS-FG
GZ=GRASS-SMO-GZ; FG=GRASS-SMO-FG
GLS=MIXFG-IGS-LS; BLS=GRASS-SMO-LS
ALF=ALFAL-FG; I=Irrigated
All fields non-irrigated
*Unless noted on Map

1 inch equals 368 feet

Program Year: 2023

Created: 11/16/2022

Flown: 2022-7-10

- clu
- crp
- plss

Farm 4301
Tract 529



Enterprise Realty & Auction, LLC

121 E. 4th St.

Maryville, MO 64468

Phone (660) 582-7160 Fax (660) 582-7162

property@entrealty.com www.entrealty.com