

10.5± Acres in Perry County, MS

\$26,250



SMALLTOWN

HUNTING PROPERTIES
& REAL ESTATE™

Office 769-760-0005

Property Profile

Perry County Camp Ground

Location:

- Perry County, MS
- Fronts Jim Easterling Road
- 37± Miles East of Hattiesburg

Coordinates:

- 31°25'56.5"N 88°55'30.9"W

Property Information:

- 10.5± Acres
- County Road Frontage
- Mixed Pine Hardwood
- Flat Terrain
- Cabin Site
- Beaver Pond
- Power and Water Available
- Chickasawhay WMA Nearby

Property Use:

- Residential
- Recreation
- Deer
- Wood Ducks

Tax Information:

- Parcel 043-05-007.000: \$117 for 2022



SMALLTOWN
HUNTING PROPERTIES
& REAL ESTATESM

DENNIS WEST

EAST MISSISSIPPI MANAGING BROKER

ALABAMA QUALIFYING BROKER

LOUISIANA ASSOCIATE BROKER

C: 601-248-4396 | O: 769-760-0005

dennis@smalltownproperties.com

4848 Main St. - Flora, MS 39071

smalltownproperties.com

Searching for a cabin or home site near public hunting land with recreation and hunting possibilities? This 10.5± acre tract features a small cabin site fronting Jim Easterling Road, near the town of Richton in Perry County, MS. A small pond is on site and utilities are available at the road. Just behind the cabin site is a large beaver pond, perfect for hunting wood ducks. For unlimited wildlife, the Chickasawhay WMA is less than one mile away and offers thousands of acres for hunting, ATV riding, horseback riding, camping and hiking. Only 37 miles from Hattiesburg, 85 miles from Gulfport, 88 miles from Mobile, AL and 140 miles from New Orleans, LA, this place is in a convenient location. Additional acreage is available. To see all this property has to offer and schedule a private showing, call Dennis West today.

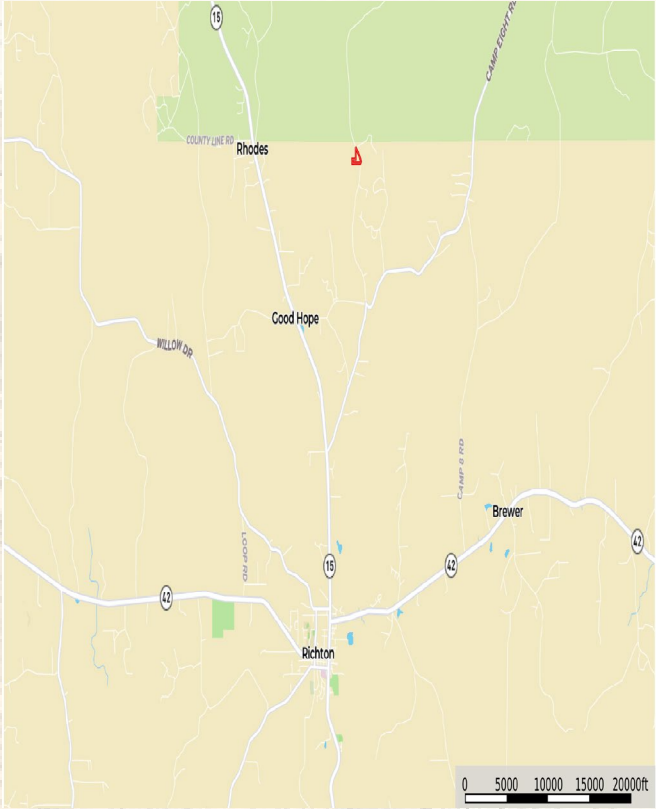


SMALLTOWN
HUNTING PROPERTIES
& REAL ESTATESM

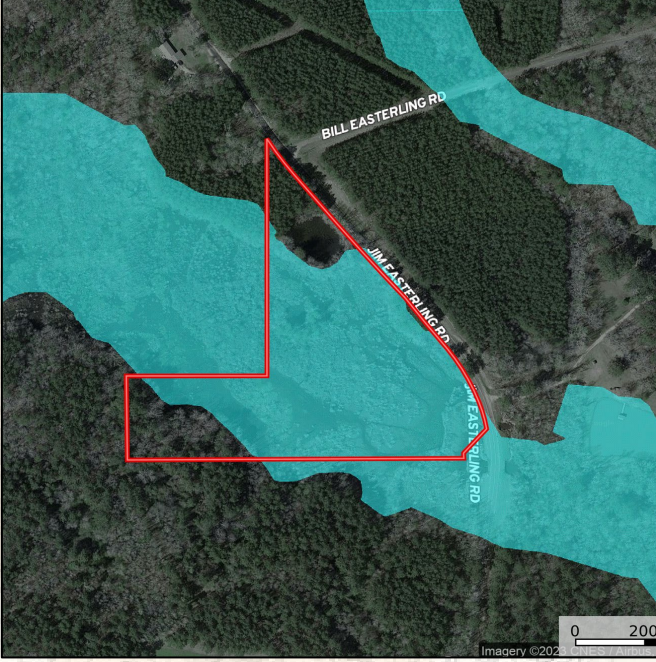
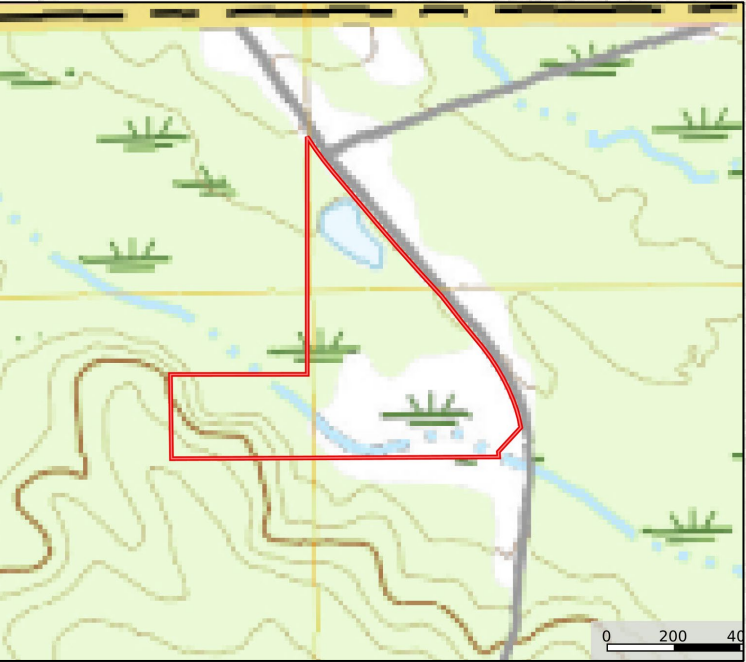
DENNIS WEST
EAST MISSISSIPPI MANAGING BROKER
ALABAMA QUALIFYING BROKER
LOUISIANA ASSOCIATE BROKER
C: 601-248-4396 | O: 769-760-0005
dennis@smalltownproperties.com
4848 Main St. - Flora, MS 39071
smalltownproperties.com



[MapRight Link](#)



[Google Map Link](#)



SMALLTOWN
HUNTING PROPERTIES
& REAL ESTATESM

DENNIS WEST

EAST MISSISSIPPI MANAGING BROKER

ALABAMA QUALIFYING BROKER

LOUISIANA ASSOCIATE BROKER

C: 601-248-4396 | O: 769-760-0005

dennis@smalltownproperties.com

4848 Main St. - Flora, MS 39071

smalltownproperties.com