



HECK LAND  
— COMPANY —

**Centropolis 20**

**+/- 20 ACRES**

**2163 Shawnee Road, Ottawa, Kansas 66067**

**COUNTY:** Franklin

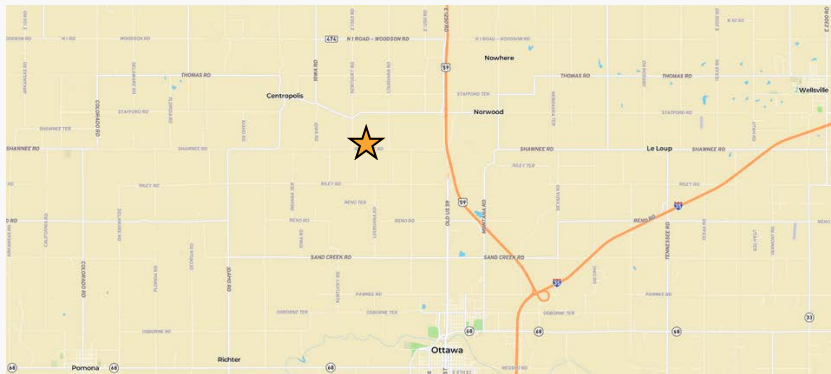
**SIZE:** 20 +/- Acres

**ASKING PRICE:** \$225,000

Nestled just three miles southeast of Centropolis, this exceptional 20-acre property offers boundless possibilities. Whether you're seeking a peaceful retreat, a private hunting playground, or envisioning a private estate surrounded by nature, this property offers it all with the many mature trees and native grasses that envelop the land.

This property's commitment to conservation and habitat enhancement is evident through a project initiated in December 2020 in collaboration with NRCS and USDA. Approximately six acres of Eastern Red Cedar trees were removed, and two acres of a hardwood corridor were improved. This has allowed for the regeneration of native plant species, such as oak, hickory, walnut, hackberry, and cherry, promoting a more vibrant and diverse ecosystem. Additionally, 25 bare-root Bur Oak seedlings were thoughtfully planted in the spring of 2023. This combined effort has resulted in a thriving ecosystem, increased wildlife diversity, and significant regeneration of native forb and grass species.

Don't miss the opportunity to be a steward of this incredible natural paradise.



PRESENTED BY:

**Dana Baker**

Heck Land Company

913.244.3527 Mobile

[dana@hecklandco.com](mailto:dana@hecklandco.com)





