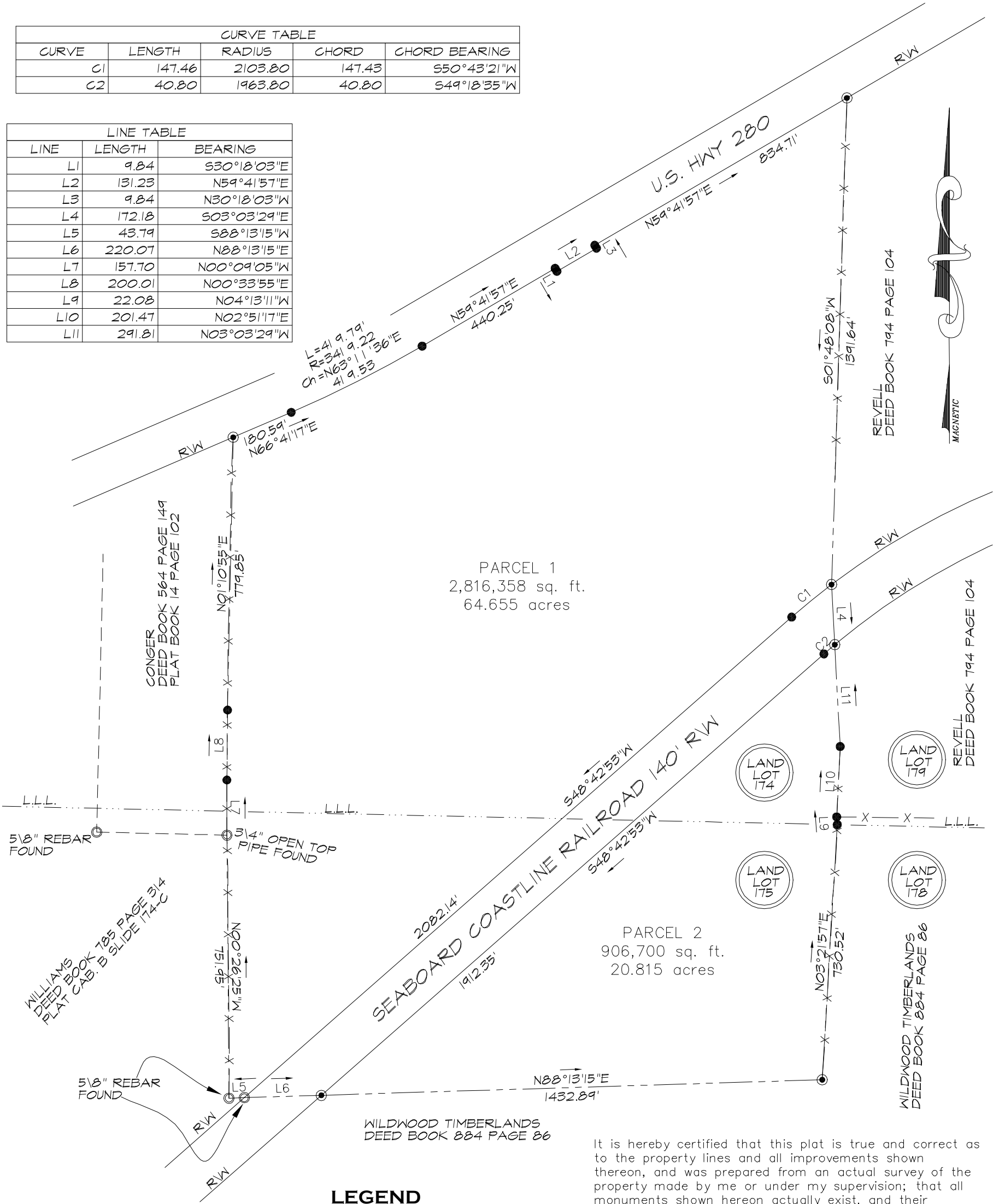


CURVE TABLE				
CURVE	LENGTH	RADIUS	CHORD	CHORD BEARING
C1	147.46	2103.80	147.43	S50°43'21"W
C2	40.80	1963.80	40.80	S49°18'35"W

LINE TABLE		
LINE	LENGTH	BEARING
L1	9.84	S30°18'03"E
L2	131.23	N59°41'57"E
L3	9.84	N30°18'03"W
L4	172.18	S03°03'29"E
L5	43.79	S88°13'15"W
L6	220.07	N88°13'15"E
L7	157.70	N00°09'05"W
L8	200.01	N00°33'55"E
L9	22.08	N04°13'11"W
L10	201.47	N02°51'17"E
L11	291.81	N03°03'29"W



It is hereby certified that this plat is true and correct as to the property lines and all improvements shown thereon, and was prepared from an actual survey of the property made by me or under my supervision; that all monuments shown hereon actually exist, and their location, size, type and material are correctly shown. The field data upon which this plat is based has a closure precision of one foot in 34,406 feet and angular error of 1" per angle point and was adjusted using the Compass rule. The linear and angular measurements shown on this plat were obtained by using a TOPCON GPT-3007 TOTAL STATION.

This plat was calculated for closure and is found to have a minimum plat closure of one foot in >1,000,000 feet.

SURVEY FOR
BSW FARMS, LLC
LOCATED IN LAND LOTS 174 & 175
26th LAND DISTRICT
SUMTER COUNTY, GEORGIA
MAY 25, 2007



TRINITY
LAND SURVEYING

BOUNDARY - SUBDIVISION - ALTA/ACSM - TOPOGRAPHIC
MATTHEW S. JOHNSON, P.L.S. 261 COUNTY LINE ROAD
GEORGIA REGISTRATION NO. 2868 OGLETHORPE, GA 31068

