

FOR SALE

▶ Highway 360 Drakes Branch, VA 23937



FEATURES

208 ACRES at one of Charlotte County's primary intersections

APPROX 2,220' of nice, level, highly visible frontage on US-15. An additional 1,650' of frontage on Rt.47

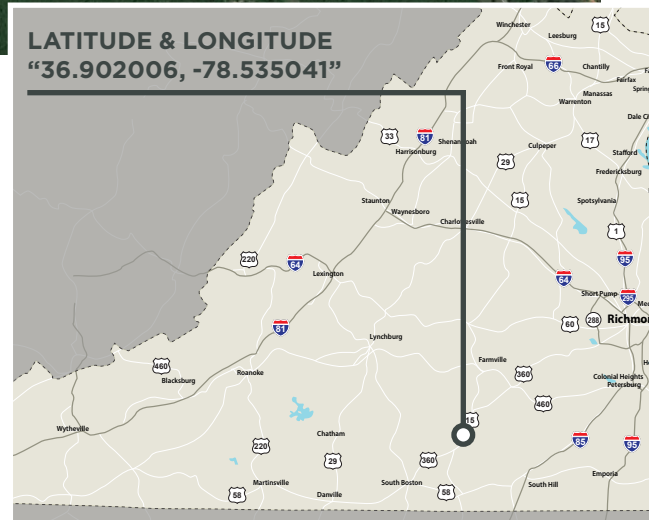
PROPERTY has just been timbered and is a blank slate with excellent potential for a variety of uses including commercial, residential, farm, cattle, hunting/recreation, land investment, and more

GOOD ROLLING to level topography

SEVERAL streams

OFFERED IN 4 TRACTS AND AS A WHOLE

LATITUDE & LONGITUDE
"36.902006, -78.535041"



For More Information Regarding This Property, Please Contact:
BRENT ALTAFFER

804-793-0055
baltaffer
@commonwealthland.com

BILL BARNETT

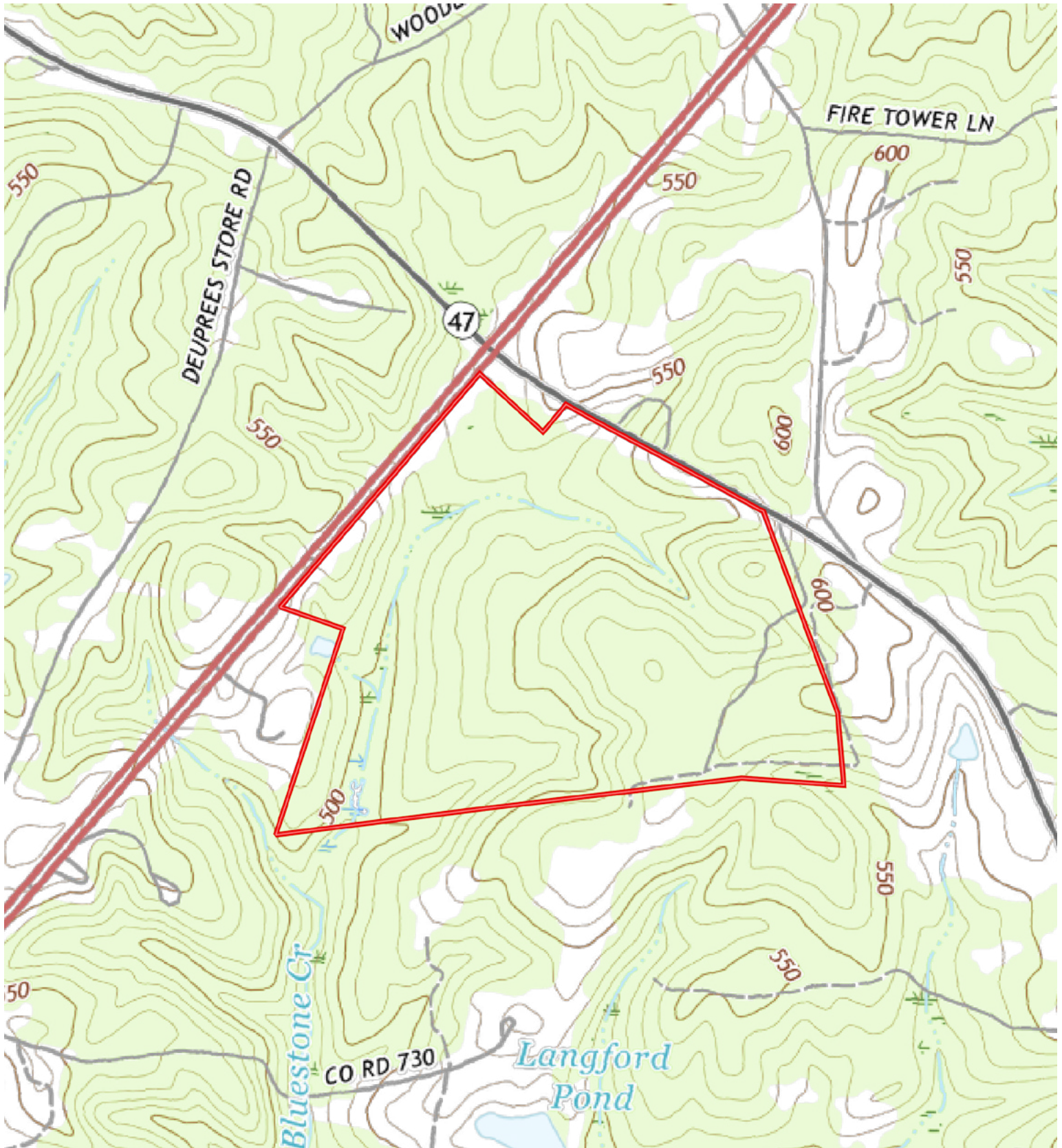
804-339-1100
bbarnett
@commonwealthland.com

MAIN OFFICE ADDRESS: 4198 Cox Road, Suite 200 | Glen Allen, VA 23060 **MAILING ADDRESS:** P.O. Box 71150 | Richmond, VA 23255
T 804-346-4966 F 804-346-5901 COMMONWEALTHCOMMERCIAL.COM | COMMONWEALTHLAND.COM



FOR SALE Highway 360 | Drakes Branch, VA 23937

TOPOGRAPHY MAP





FOR SALE Highway 360 | Drakes Branch, VA 23937

WET LANDS

