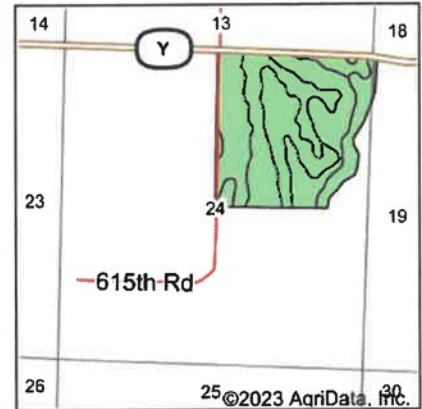
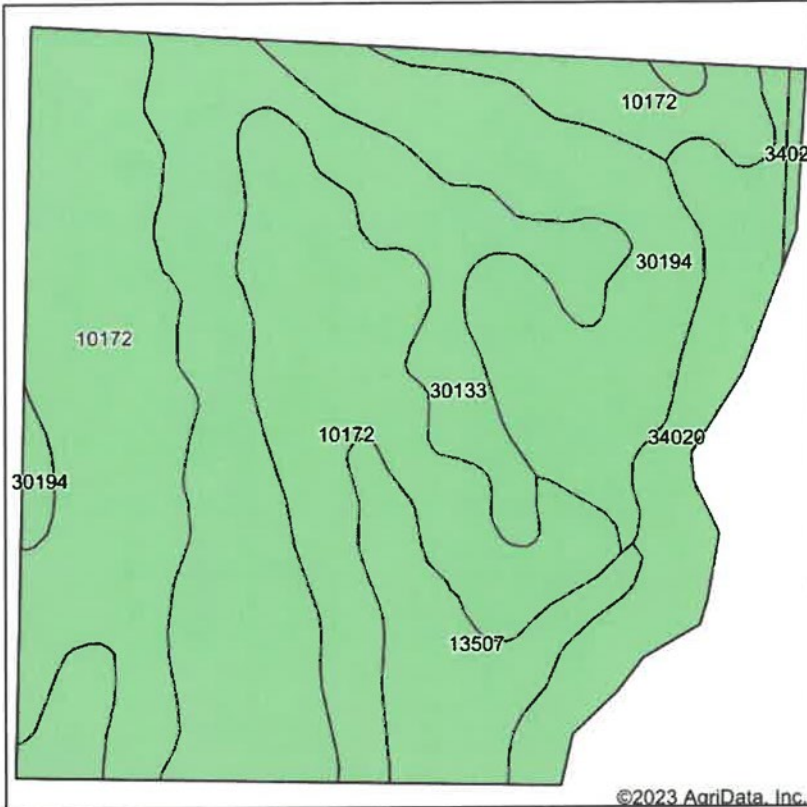


Soils Map



State: **Missouri**
 County: **Gentry**
 Location: **24-64N-30W**
 Township: **Howard**
 Acres: **148.51**
 Date: **11/21/2023**



Maps Provided By:



© AgriData, Inc. 2023

www.AgriDataInc.com



Soils data provided by USDA and NRCS.

Area Symbol: MO075, Soil Area Version: 26								
Area Symbol: MO081, Soil Area Version: 27								
Code	Soil Description	Acres	Percent of field	Non-Irr Class *c	Common bermudagrass Tons	Orchardgrass red clover Tons	Tall fescue Tons	Warm season grasses Tons
10172	Shelby clay loam, 9 to 14 percent slopes, moderately eroded	60.33	40.6%	IIIe				
30133	Lamoni clay loam, 5 to 9 percent slopes, eroded	35.73	24.1%	IIIe				
30194	Shelby clay loam, 14 to 18 percent slopes, moderately eroded	23.80	16.0%	IVe				
34020	Colo silty clay loam, drainageway, 2 to 5 percent slopes, frequently flooded	14.27	9.6%	IIw				
13507	Bremer silty clay loam, 0 to 2 percent slopes, rarely flooded	13.65	9.2%	IIw	8	7	8	9
34020	Colo silty clay loam, drainageway, 2 to 5 percent slopes, frequently flooded	0.73	0.5%	IIw				
Weighted Average				2.97	0.7	0.6	0.7	0.8

*c: Using Capabilities Class Dominant Condition Aggregation Method