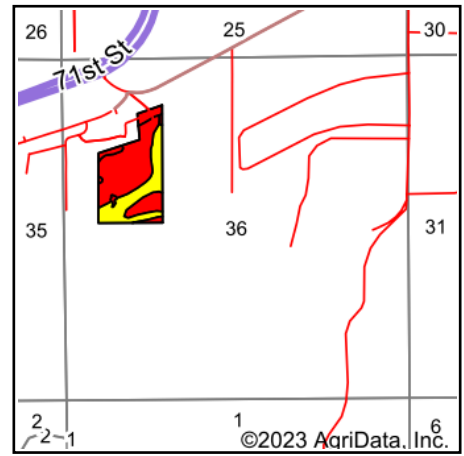
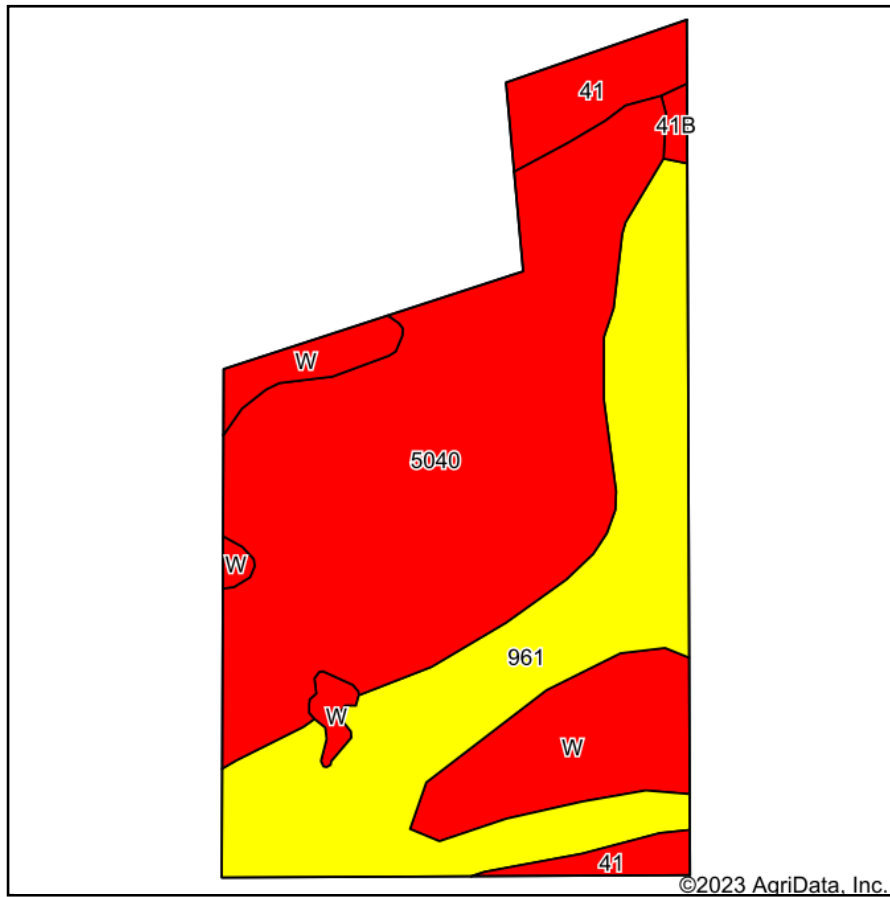


Total Soils Map



State: **Iowa**
 County: **Des Moines**
 Location: **36-69N-3W**
 Township: **Union**
 Acres: **31.52**
 Date: **9/14/2023**



Maps Provided By:



Area Symbol: IA057, Soil Area Version: 27

Code	Soil Description	Acres	Percent of field	CSR2 Legend	Non-Irr Class *c	CSR2**	CSR	*n NCCPI Overall
5040	Anthropotic Udorthents, 2 to 9 percent slopes	14.99	47.6%		VIs	5		79
961	Ambraw loam, 0 to 2 percent slopes	10.17	32.3%		Ilw	62	47	73
W	Water	4.28	13.6%			0	0	
41	Sparta loamy sand, Illinois till plain, 0 to 2 percent slopes	1.91	6.1%		IVs	40	45	59
41B	Sparta loamy sand, Illinois till plain, 2 to 6 percent slopes	0.17	0.5%		IVs	35	35	55
Weighted Average					*-	25	*-	*n 65

**IA has updated the CSR values for each county to CSR2.

*- CSR weighted average cannot be calculated on the current soils data, use prior data version for csr values.

*n: The aggregation method is "Weighted Average using all components"

*c: Using Capabilities Class Dominant Condition Aggregation Method

*- Non Irr Class weighted average cannot be calculated on the current soils data due to missing data.

Soils data provided by USDA and NRCS.