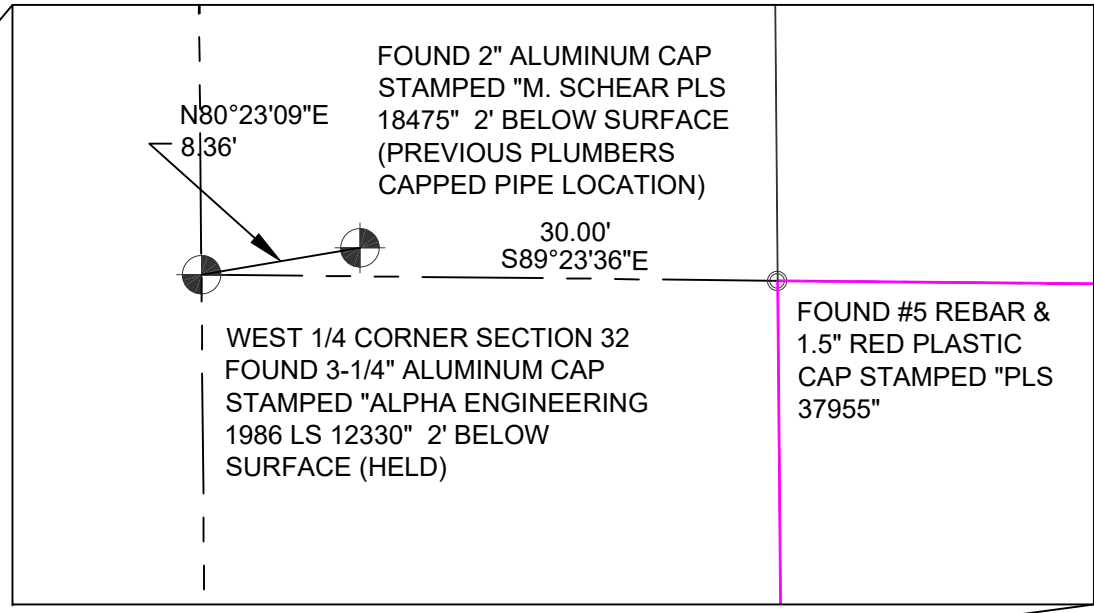
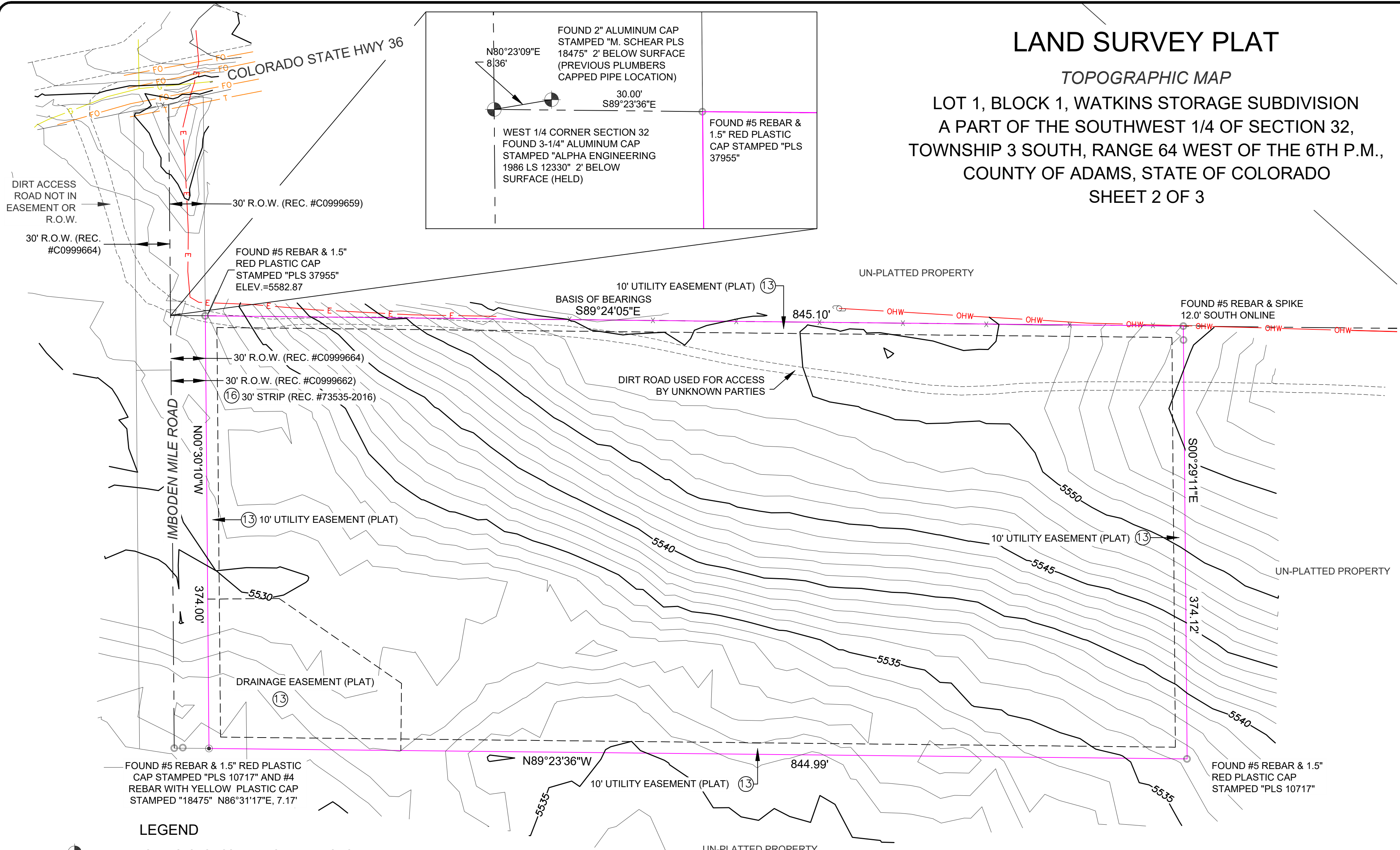


# LAND SURVEY PLAT

## TOPOGRAPHIC MAP

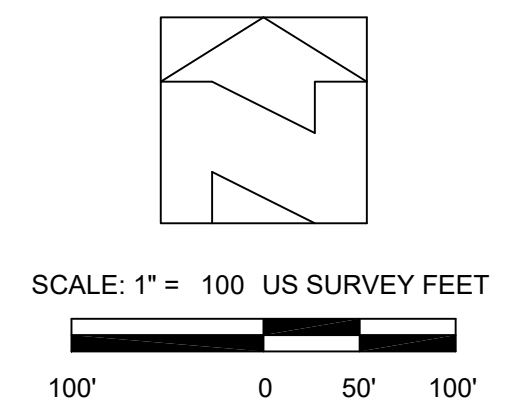
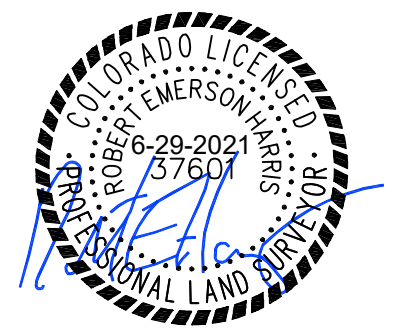
LOT 1, BLOCK 1, WATKINS STORAGE SUBDIVISION  
 A PART OF THE SOUTHWEST 1/4 OF SECTION 32,  
 TOWNSHIP 3 SOUTH, RANGE 64 WEST OF THE 6TH P.M.,  
 COUNTY OF ADAMS, STATE OF COLORADO  
 SHEET 2 OF 3



FOUND #5 REBAR & 1.5" RED PLASTIC CAP STAMPED "PLS 10717" AND #4 REBAR WITH YELLOW PLASTIC CAP STAMPED "18475" N86°31'17"E, 7.17'

### LEGEND

- FOUND SECTION CORNER MONUMENT AS NOTED
- FOUND MONUMENT AS NOTED
- SET #5 REBAR & 1.5" GREEN PLASTIC CAP STAMPED "PLS 37601"
- UTILITY POLE
- GUY WIRE
- CORRESPONDS WITH B-2 TITLE EXCEPTION NUMBER
- SUBJECT PROPERTY BOUNDARY
- FENCE
- UNDERGROUND ELECTRIC
- OVERHEAD WIRES
- FIBER OPTIC LINE
- TELEPHONE LINE
- GAS LINE



**Gillians**

GILLIANS LAND CONSULTANTS  
 P.O. BOX 746358  
 ARVADA, CO 80006-6358  
 303-972-6640  
 www.gillianslc.com

LAND SURVEYING  
 ALTA/NSPS SURVEYS  
 TOPOGRAPHIC MAPS  
 CONSULTING SERVICES

JOB NO.: 21144  
 DRAWN: REH  
 CHECKED: GP  
 DESIGNER: JW  
 ISSUE DATE: 6-29-2021  
 SCALE: 1"=100'  
 FILE: LSP

SHEET: **2**  
OF 3