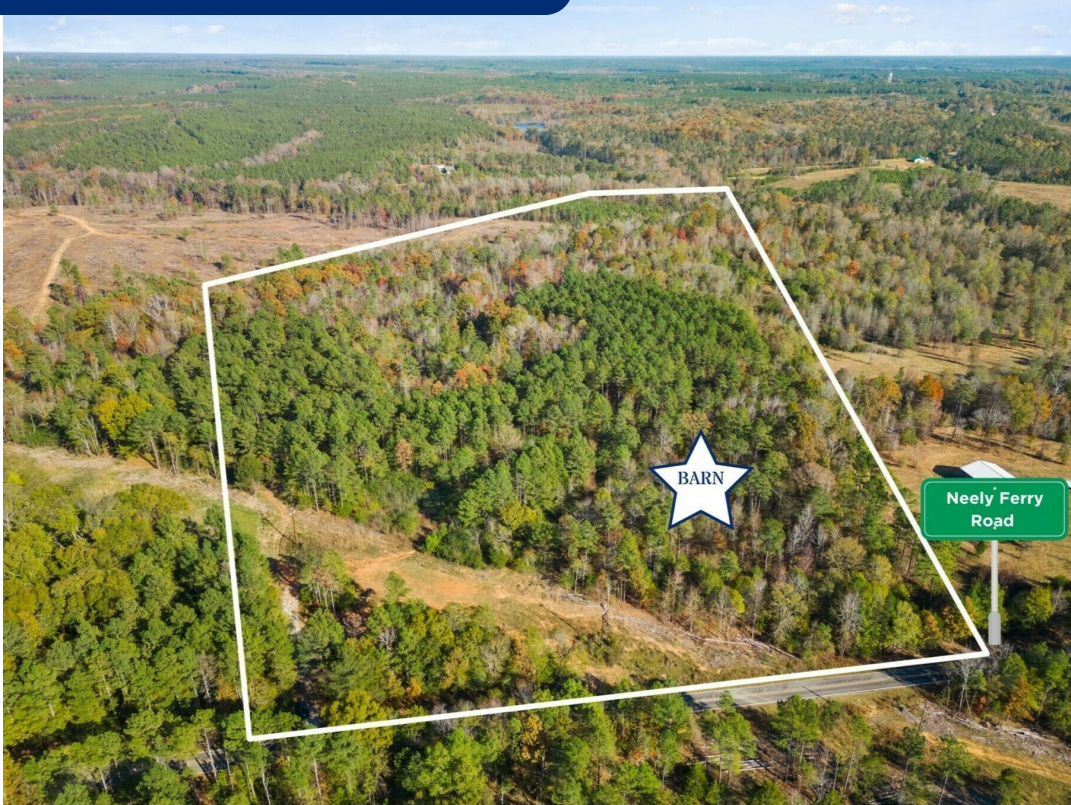


NEELY FERRY HUNTER'S RETREAT

±27 Acres in Laurens County, SC



NEELY FERRY RD WATERLOO, SC 29384 • FOR SALE



PROPERTY HIGHLIGHTS

- Laurens County Tax Map #305-00-00-013
- Best Use: Recreational Opportunity with Homesite Capabilities
- Unrestricted & Unzoned in a Superb Location
- Wooded Acreage: Mature Mixed Hardwoods and Pines
- Laurens County School Zone: Waterloo Elementary | Hickory Tavern Elementary/ Middle | Laurens District 55 High School
- Utilities: Power, Water Possible
- Hunter's Get Away
- New Built Metal Building on a Slab w/ ±500 sqft Two Car Garage
- *Acreage and Utility to be Verified by Buyer or Buyer's Agent

OFFERING SUMMARY

Sale Price:	\$249,999
Lot Size:	±27 Acres



TYLER WHIMS
Senior Associate
864.430.4507
twhims@reedypg.com

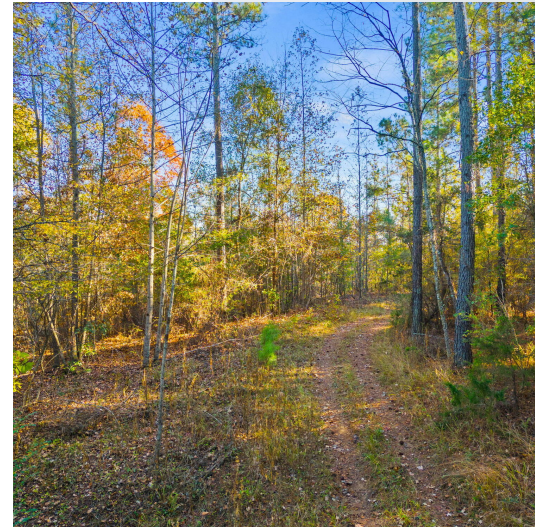
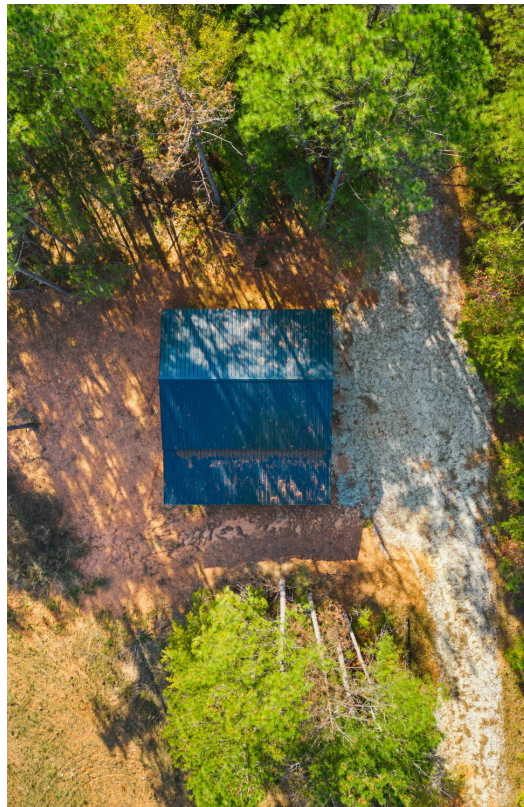
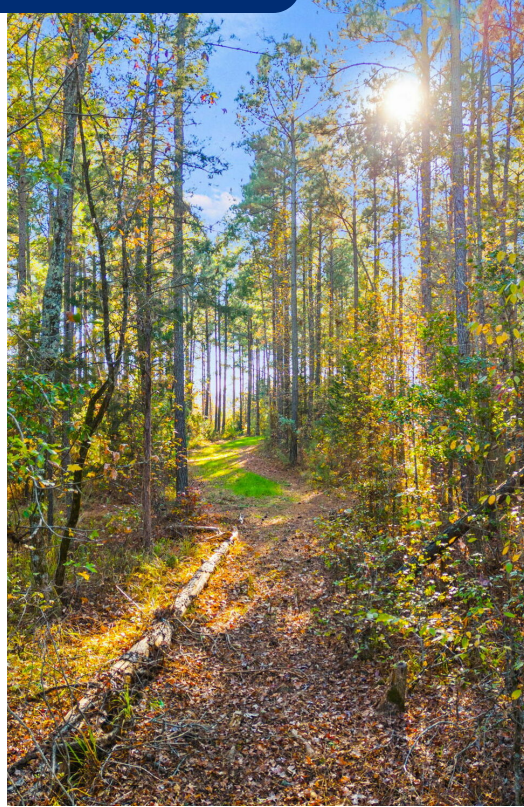
CHASE STYLES
Associate
864.365.5440
cstyles@reedypg.com

REEDY LAND CO.
P.O. Box 17009
Greenville, SC 29606
864.610.5263
reedyccommercial.com

NEELY FERRY HUNTER'S RETREAT

±27 Acres in Laurens County, SC

NEELY FERRY RD WATERLOO, SC 29384 • FOR SALE



TYLER WHIMS

Senior Associate
864.430.4507
twhims@reedypg.com

CHASE STYLES

Associate
864.365.5440
cstyles@reedypg.com

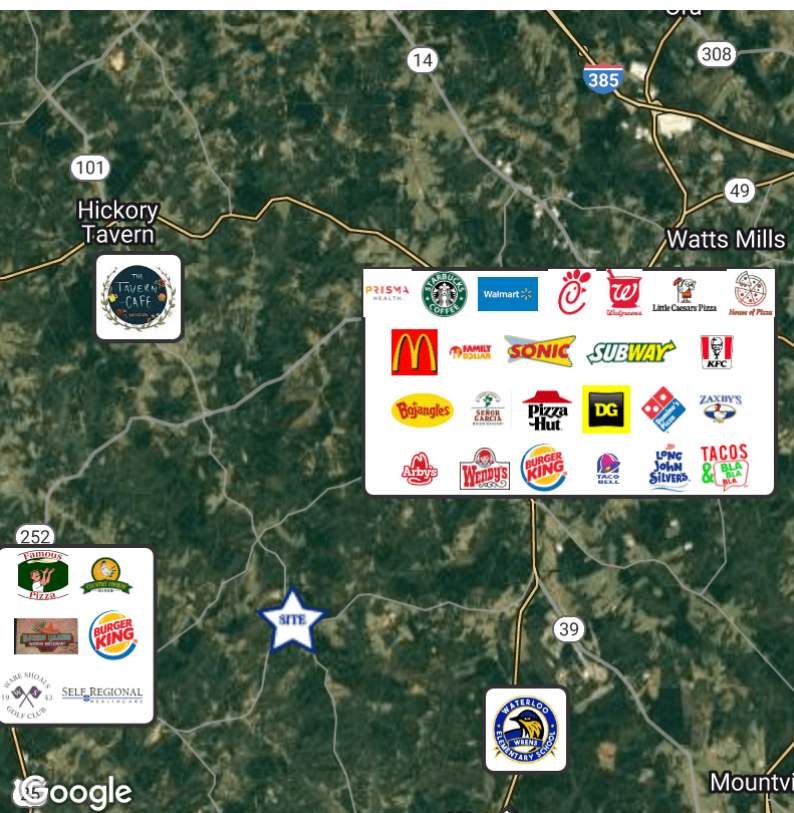
REEDY LAND CO.
P.O. Box 17009
Greenville, SC 29606
864.610.5263
reedyccommercial.com

NEELY FERRY HUNTER'S RETREAT

±27 Acres in Laurens County, SC



NEELY FERRY RD WATERLOO, SC 29384 • FOR SALE



VIDEO

PROPERTY DESCRIPTION

Welcome to your dream homestead in Waterloo, SC! This sprawling, unrestricted land is just right for a cozy homesite with room for play. Make it your own, surrounded by mighty hardwoods and pines. For folks who love the outdoors and hunting, there's plenty of wooded acreage to explore.

There's a brand-new metal building, around ±500 square feet, ready for your touch. It could be a workshop, a storage spot, or a hobbyist's hideaway – the choice is yours. This property also includes a strategically placed deer blind, designed for optimal concealment and comfort, making it a hunter's paradise. This spot offers a wide panoramic view for an unforgettable hunting experience.

Laurens County's got a lively bunch of wildlife, from deer to different bird species, all thriving in the diverse ecosystem here. If hunting's not your thing, there's hiking, birdwatching, and just soaking in the peaceful vibes. This property, with its pre-constructed deer blind, mixes the thrill of the hunt with the coziness of home. Snag your own piece of wilderness and explore the untamed beauty of Laurens County from your personal getaway! This one-of-a-kind property gives you a rare chance to craft a spot that blends the calm of country living with the joy of Southern recreation. Whether you're picturing your dream home or an adventure-filled escape, Waterloo, SC is the place where your dreams can truly come alive.

TYLER WHIMS

Senior Associate
864.430.4507
twhims@reedypg.com

CHASE STYLES

Associate
864.365.5440
cstyles@reedypg.com

REEDY LAND CO.

P.O. Box 17009
Greenville, SC 29606
864.610.5263
reedyccommercial.com