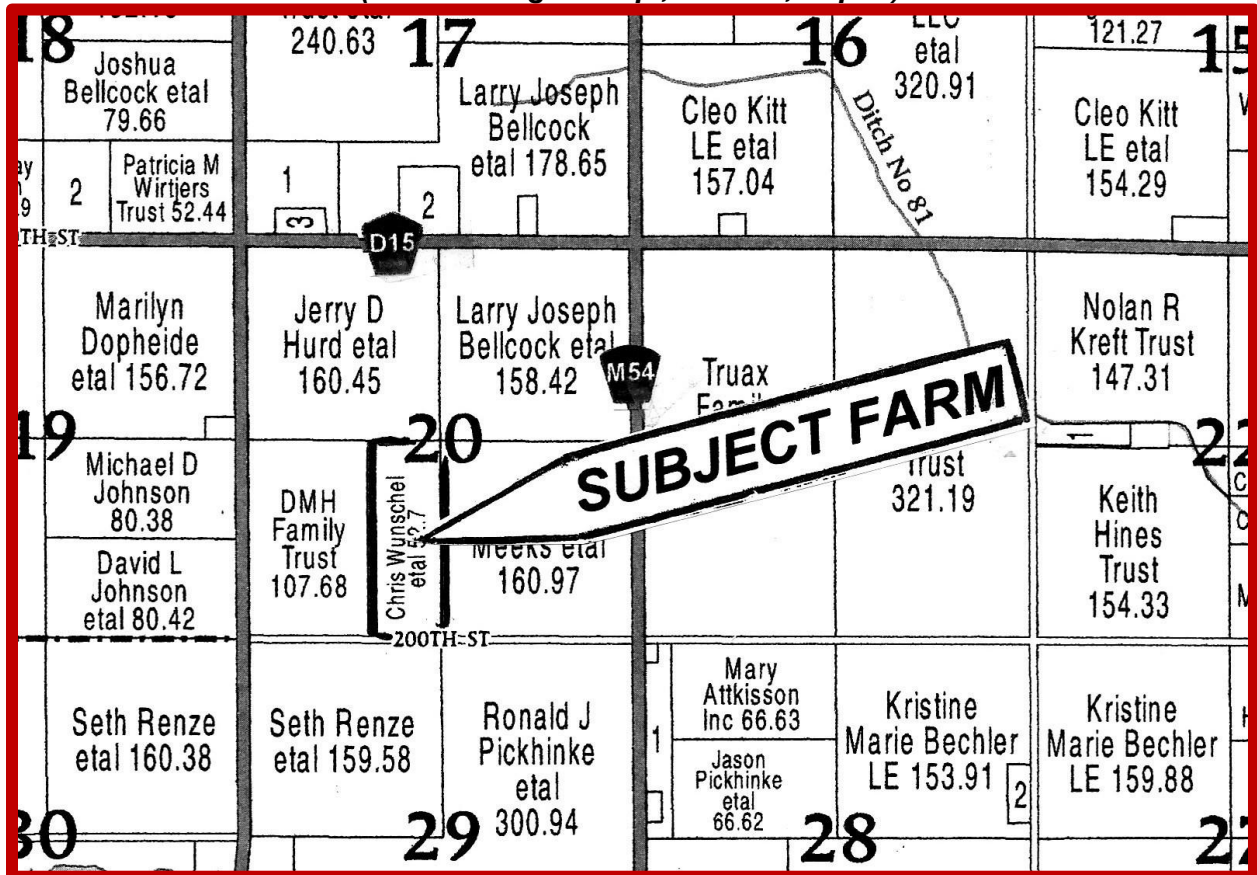


SAC COUNTY, IOWA FARMLAND FOR SALE

A Choice 52.71 Acre Douglas Township, Sac Co., IA parcel
(Part of Douglas Twp., Sac Co., IA plat)



JUST LISTED FOR SALE: A bare 52.71-acre parcel located north of Sac City in Section 20 of Douglas Township. **CSR2 of 87.4.**

FSA: Cropland of 52.31; Corn Base: 26.60; Soybean Base: 25.70. No lease in place – full possession at closing. A well located, highly productive parcel that would make a solid addition to an existing operation or an Ideal Investor/Income type property.

For more information, visit our website and/or contact:



Green Real Estate & Auction Co.

Mike Green, Broker & Jim Green, Broker Associate

Licensed Real Estate Brokers in the State of Iowa

Sac City, IA; Ph. 712-662-4442

www.greenrealestate-auction.com