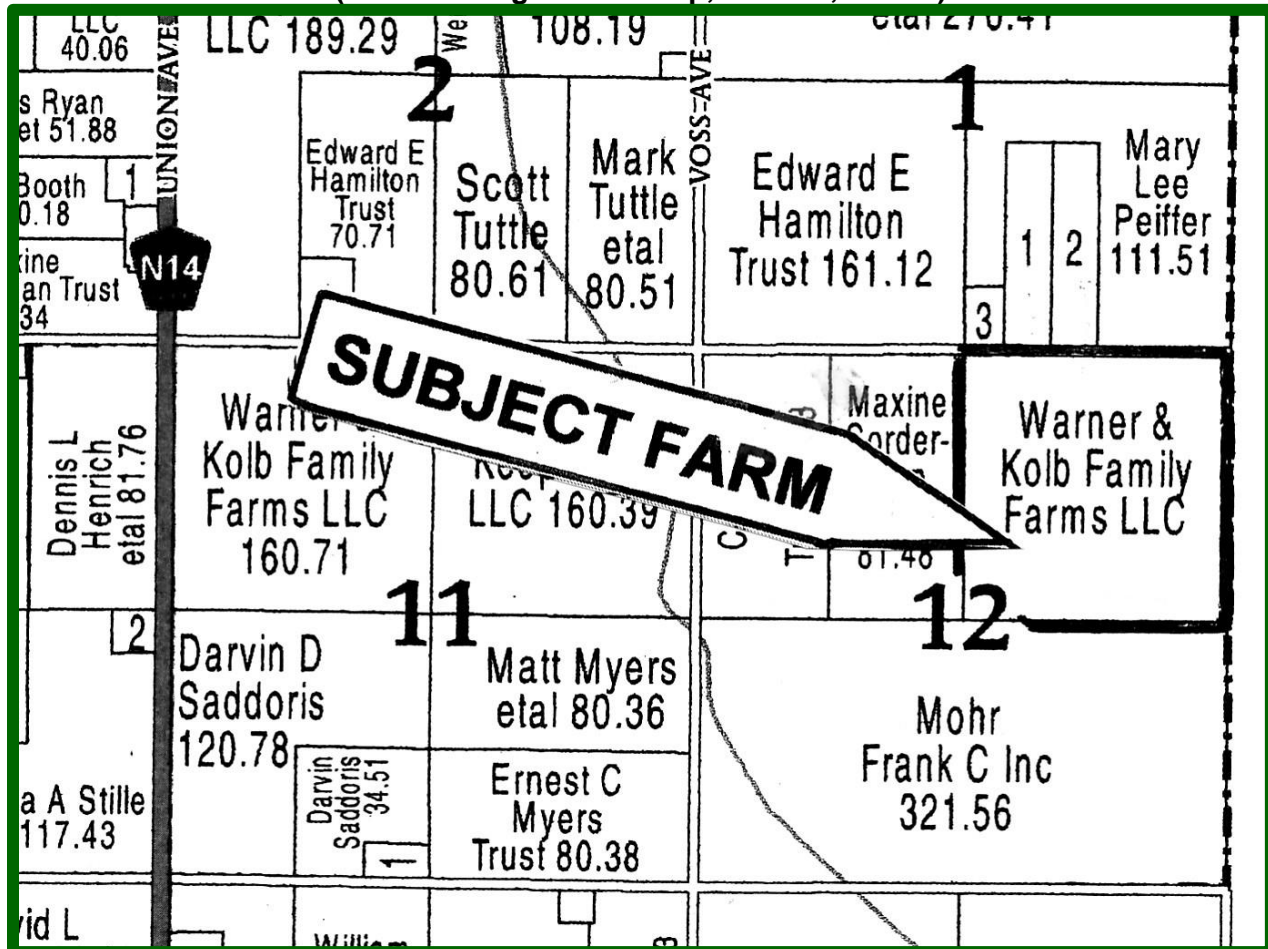


# SAC COUNTY, IOWA FARM FOR SALE

(Part of Douglas Township, Sac Co., IA Plat)



**JUST LISTED FOR SALE:** A 160 acre farm located northeast of Sac City or southeast of Newell, Iowa in Section 12 of Douglas Township, Sac County. **CSR2 of 82.9. FSA:** Cropland Acres: 158.17; Corn Base: 76.90 w/PLC index of 167; Soybean Base: 79.90 w/index of 51. Farm enjoys extensive tiling and good farming practices. No lease in place – full possession at closing. Listed @ \$ 13,250./Acre

*Check our website for more information and/or Contact:*



**Green Real Estate & Auction Co.**

Mike Green, Broker & Jim Green, Broker Associate

Licensed in the State of Iowa

Sac City, IA; ph. 712-662-4442

[www.greenrealestate-auction.com](http://www.greenrealestate-auction.com)