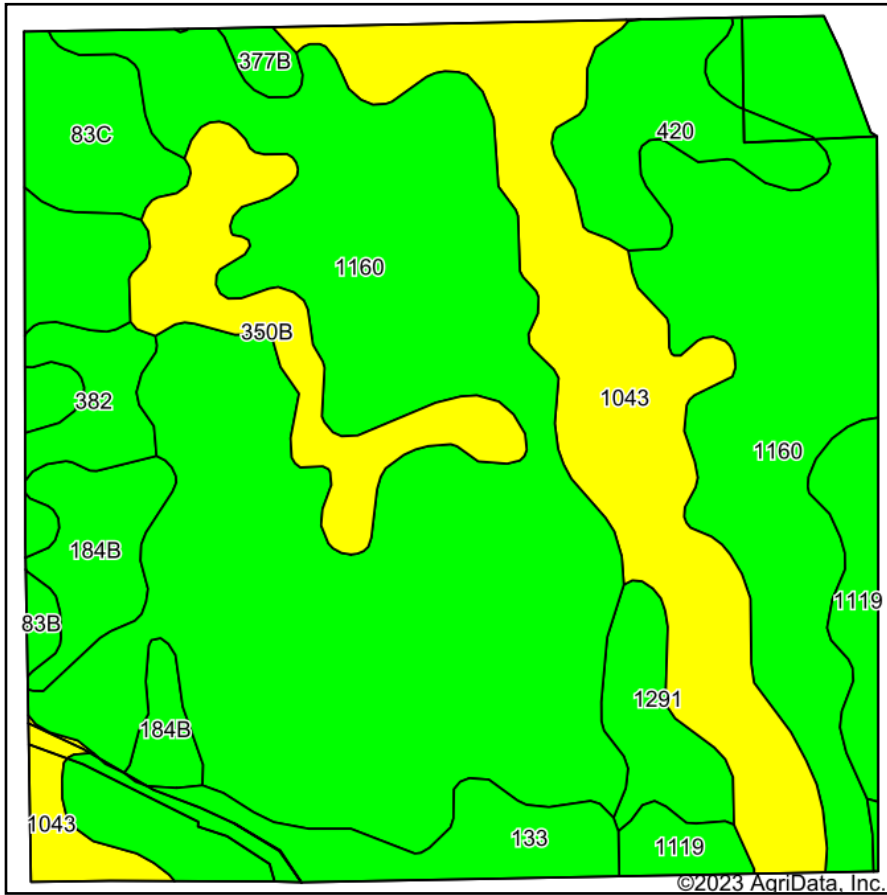
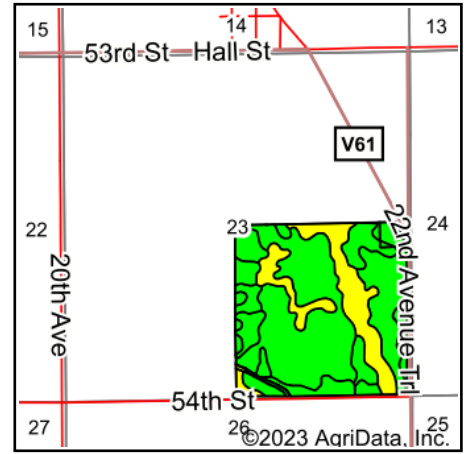


# Total Soils Map



Soils data provided by USDA and NRCS.



State: **Iowa**  
 County: **Benton**  
 Location: **23-86N-11W**  
 Township: **Cedar**  
 Acres: **153.09**  
 Date: **12/20/2023**

**PC PEOPLES**  
 COMPANY  
 INTEGRATED LAND SOLUTIONS

Maps Provided By:

**surety**  
 CUSTOMIZED ONLINE MAPPING  
 © AgriData, Inc. 2023 www.AgriDataInc.com



Area Symbol: IA011, Soil Area Version: 26

Code	Soil Description	Acres	Percent of field	CSR2 Legend	Non-Irr Class *c	CSR2**
1160	Walford silt loam, terrace, 0 to 2 percent slopes	83.72	54.7%		IIw	85
1043	Bremer silty clay loam, sandy substratum, 0 to 2 percent slopes, rarely flooded	22.44	14.7%		IIw	68
350B	Waukegan silt loam, 2 to 5 percent slopes	8.24	5.4%		Ile	55
133	Colo silty clay loam, 0 to 2 percent slopes, occasionally flooded	8.18	5.3%		IIw	78
420	Tama silty clay loam, terrace, 0 to 2 percent slopes	6.57	4.3%		I	100
184B	Klinger silty clay loam, 1 to 4 percent slopes	5.58	3.6%		Iw	95
1119	Muscatine silty clay loam, terrace, 0 to 2 percent slopes	4.77	3.1%		Iw	100
83C	Kenyon loam, 5 to 9 percent slopes	4.51	2.9%		IIIe	85
1291	Atterberry silt loam, terrace, 0 to 2 percent slopes	3.75	2.4%		Iw	80
382	Maxfield silty clay loam, 0 to 2 percent slopes	3.25	2.1%		IIw	87
377B	Dinsdale silty clay loam, 2 to 5 percent slopes	1.53	1.0%		Ile	94
83B	Kenyon loam, 2 to 5 percent slopes	0.55	0.4%		Ile	90
Weighted Average					1.89	82

\*\*IA has updated the CSR values for each county to CSR2.

\*c: Using Capabilities Class Dominant Condition Aggregation Method

Soils data provided by USDA and NRCS.