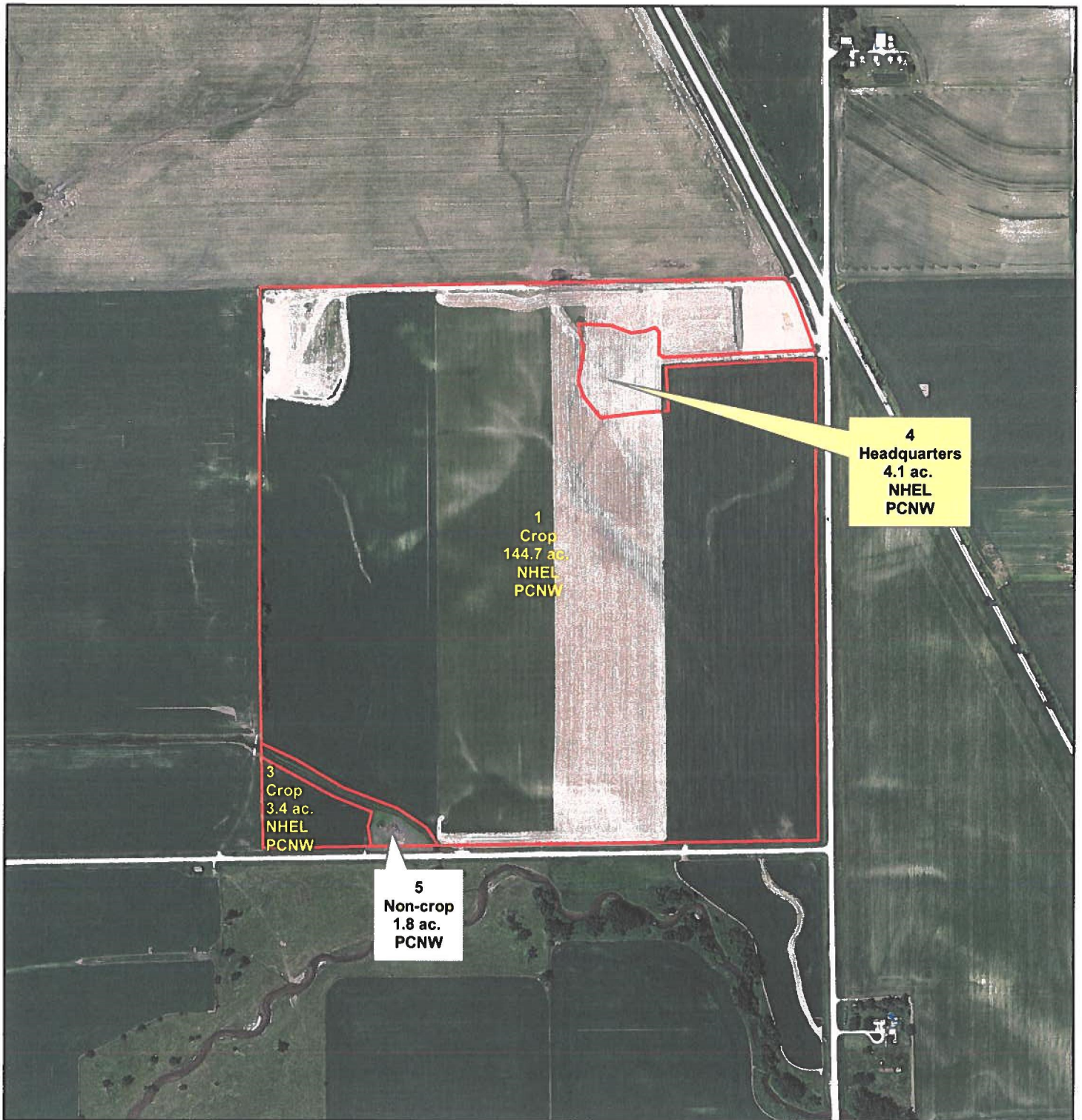


Wetland & HEL Determination

Field Office: VINTON SERVICE CENTER

Agency: USDA-NRCS



Legend

 Consplan



660 0 660 1,320 Feet



Soils Map

Field Office: VINTON SERVICE CENTER
Agency: USDA-NRCS

Legal Description: Tract 289
SE 1/4 Cedar 23

State and County: IA, BENTON

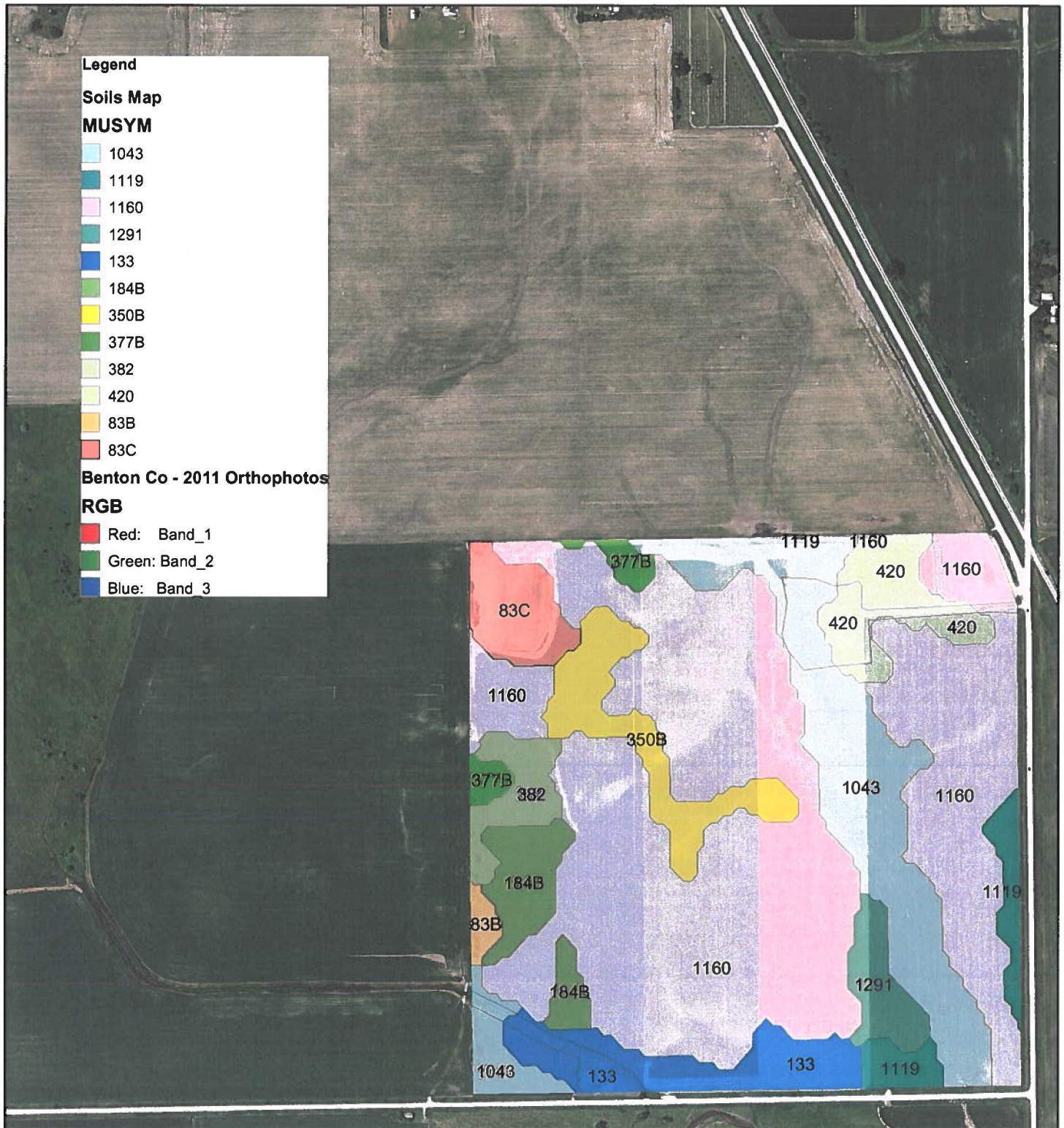


Image: Benton Co - 2002 Orthophotos

660 0 660 1,320 Feet





HIGHLY ERODIBLE LAND AND WETLAND CONSERVATION DETERMINATION

Name Address:		Request Date: 10/1/12	County: Benton
Agency or Person Requesting Determination:	FSA	Tract No: 289	FSA Farm No.: 6136

Section I - Highly Erodible Land

Is a soil survey now available for making a highly erodible land determination?	Yes
Are there highly erodible soil map units on this farm?	Yes

Fields in this section have undergone a determination of whether they are highly erodible land (HEL) or not; fields for which an HEL Determination has not been completed are not listed. In order to be eligible for USDA benefits, a person must be using an approved conservation system on all HEL.

<u>Field(s)</u>	<u>HEL(Y/N)</u>	<u>Sodbust(Y/N)</u>	<u>Acres</u>	<u>Determination Date</u>
1	N		144.7	2/4/88
3	N		3.4	2/4/88
4	N		4.1	10/1/12

The Highly Erodible Land determination was completed in the office.

Section II - Wetlands

Are there hydric soils on this farm?	Yes
--------------------------------------	-----

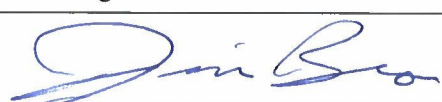
Fields in this section have had wetland determinations completed. See the Definition of Wetland Label Codes for additional information regarding allowable activities under the wetland conservation provisions of the Food Security Act and/or when wetland determinations are necessary to determine USDA program eligibility.

<u>Field(s)</u>	<u>Wetland Label*</u>	<u>Occurrence Year (CW)**</u>	<u>Acres</u>	<u>Determination Date</u>	<u>Certification Date</u>
1	PCNW		144.7	10/1/12	10/1/12
3	PCNW		3.4	10/1/12	10/1/12
4	PCNW		4.1	10/1/12	10/1/12
Unl	PCNW		1.8	10/1/12	10/1/12

The wetland determination was completed in the field. It was mailed to the person on 10/1/12.

Remarks: Wetland determination requested. New land put into production.

I certify that the above determinations are correct and were conducted in accordance with policies and procedures contained in the National Food Security Act Manual.

Signature Designated Conservationist	Date
	10/1/12

Name & Label	Criteria for Determination	Authorized Uses	Authorized Maintenance	NFSAM Citation
(MWM) Mitigation Site	Site of wetland restoration, enhancement, or creation serving as mitigation for MIW site.	As stipulated in Mitigation Plan/Agreement.	As stipulated in Mitigation Plan/Agreement	Part 515.10
(NW) Nonwetland	Does not meet wetland criteria. Also includes wetlands converted before December 23, 1985, but a commodity crop was not produced and the area does not meet wetland criteria. The area has not been abandoned.	No restrictions.	No restrictions unless manipulation would convert Adjacent wetlands.	Part 514.20
(PC) Prior Converted Cropland	Wetland converted to cropland before December 23, 1985, and as of December 23, 1985, was capable of being cropped and did not meet farmed wetland hydrology criteria.	No restrictions.	No restrictions unless manipulation would convert Adjacent wetlands.	Part 514.30
(TP) Third Party Exemption	A wetland converted after December 23, 1985, by a third party who is not associated with the participant, and without the participant's collusion, fraud, scheme or device. A third party does not include predecessors in interest on the tract or drainage districts or other local government entities.	May be used for production of agricultural commodities or forage.	Further drainage improvement will cause ineligibility.	Part 514.42
(W) Wetland	Meets wetland criteria. Not converted after December 23, 1985. Also, includes areas previously identified as FW or FWP, which have been abandoned.	May be farmed under natural conditions without removal of woody vegetation.	At level needed to maintain original system on FW, FWP, and PC. Must not convert Additional wetlands or exceed original scope and effect of drainage system.	Part 514.10
(WX) Wetlands that have been manipulated	Wetlands that have been manipulated but not for the purpose of or making possible production of an agricultural commodity.	Would cause ineligibility if production was later made possible.	No restrictions as long as production not made possible including on an adjacent wetland.	Part 514.11

Current Labels: The above are the **ONLY** labels that are authorized for use when making a certified wetland determination in accordance with the National Food Security Act Manual, 4th edition.

ADDITIONAL INFORMATION

PAST LABELS: Previous editions of the National Food Security Act Manual contained labels that will not be used for certified determinations completed after the effective date of this manual (January 2008). These labels may be shown for previous determinations and maintained in the Customer Service Toolkit.

(CC) Commenced Conversion: Conversion began before December 23, 1985, and was approved by FSA; conversion activity was completed by January 1, 1995. Authorized Uses: No restrictions provided activities were completed per conditions. Authorized Maintenance: As stipulated in the agreement.

(CMW) Categorical Minimal Effect: Activity or practice is conducted per the approved list identified in the Federal Register. Authorized Uses: Per conditions of the approved state specific list. Authorized Maintenance: Per conditions of the approved list.

(CWNA) Converted Wetland for Nonagricultural Purposes: Authorized Uses: Production of agricultural commodities will cause ineligibility. Authorized Maintenance: No restrictions.

Easement site + label: Area that has been created, restored, or enhanced under an agreement to allow conversion and cropping of another wetland. Authorized Uses: As specified in agreement. Authorized Maintenance: As specified in agreement.

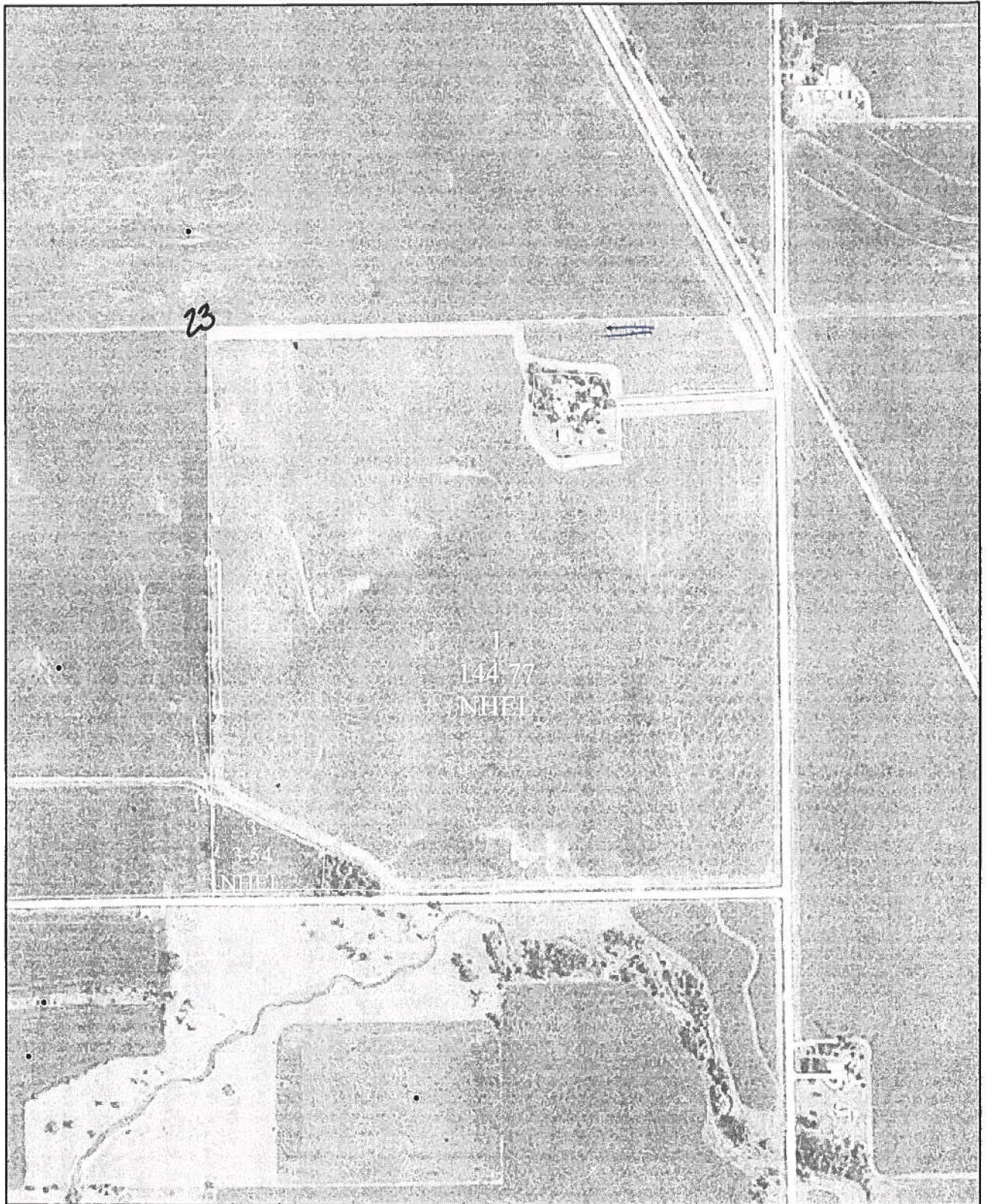
(NI) Not Inventoried: Used when a wetland determination is not conducted. Authorized Uses: Can determine only after a certified wetland determination is completed for the area labeled NI. Authorized Maintenance: Can determine only after a certified wetland determination is completed for the area labeled NI.

(OW) other waters of the United States: Areas that the COE have taken jurisdiction of under the Clean Water Act. Only use with COE decision/guidance. Authorized Uses: As per COE permit. Authorized Maintenance: As per COE permit.

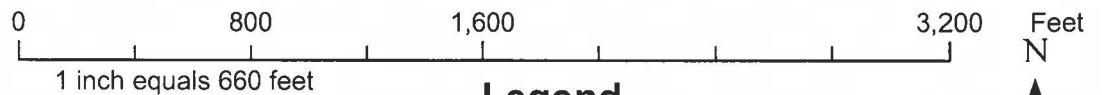
Obvious Wetlands (514.41C.): CWTE does not apply to obvious wetlands. An obvious wetland is an area that is continuously inundated or saturated for long periods of time during the growing season to such an extent that access by foot to make a determination of predominance of hydric soils or prevalence of hydrophytic vegetation is not feasible. [7 CFR 12.6 (c)(8)] Additionally, wetland sites that are cropped or have had forage harvested by mechanical means less than 5 out of 10 years because of ponding, flooding, or saturation are obvious wetlands.

Farm # 6136 Tract # 289 Sec # 23

1107



Benton County FSA



Legend

- Wetland Determination
- Field Boundary



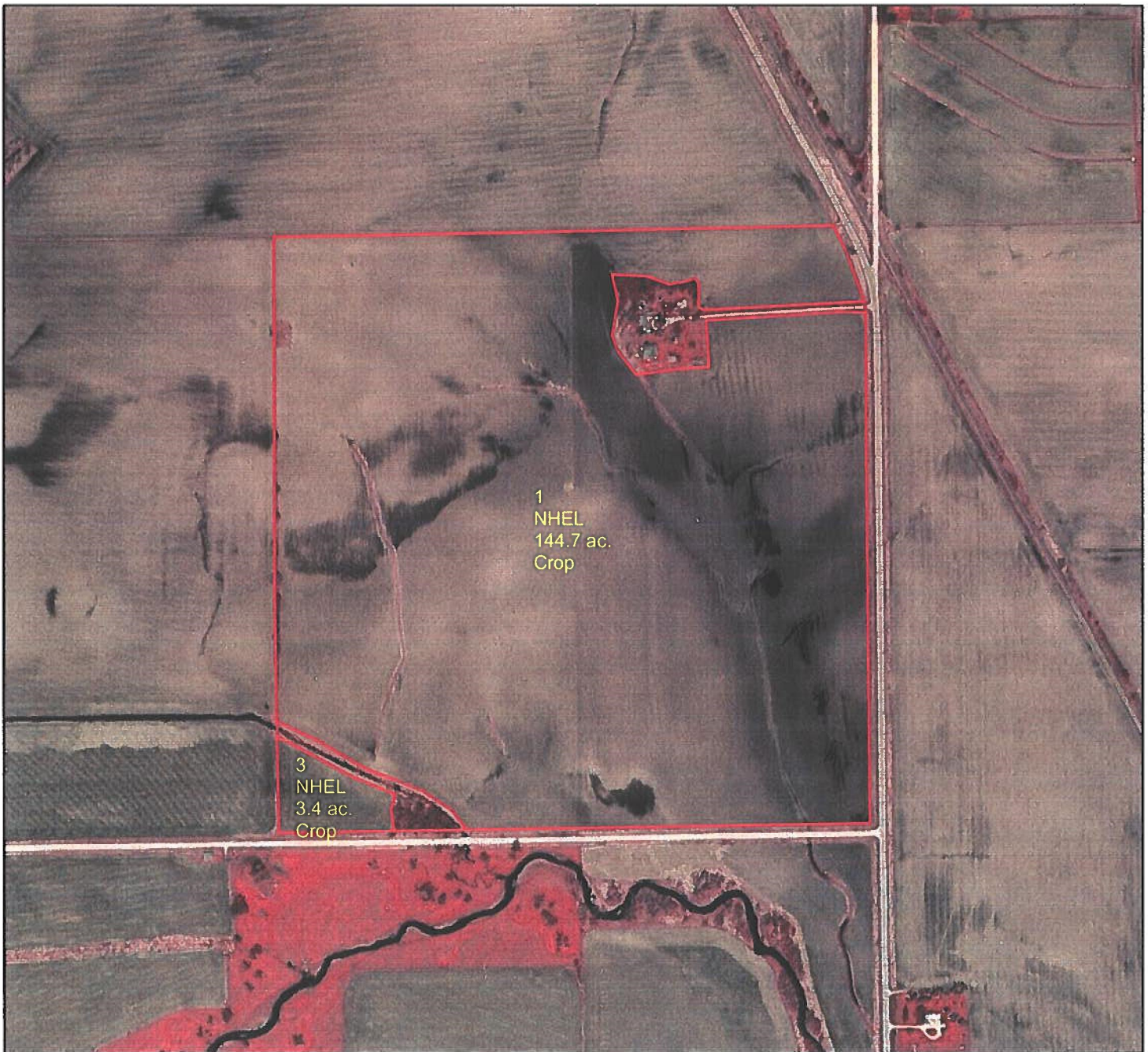
Farm Map

Customer(s): BOISEN FARMS, In LAJ LC

Field Office: VINTON SERVICE CENTER
Agency: USDA-NRCS

Legal Description: Tract 289
SE 1/4 Cedar 23

State and County: IA, BENTON



Legend

 Consplan

Image: Benton Co - 2002 Orthophotos

660 0 660 1,320 Feet



Soils Inventory Report

Thu Jun 2 14:52:56 CDT 2005

LAJ LC

Tract	Land Unit	Map Unit Symbol	Acres	Percent
289		1160	0.2	3%
289		133	1.5	25%
289		420	2.1	36%
289		1043	2.1	36%

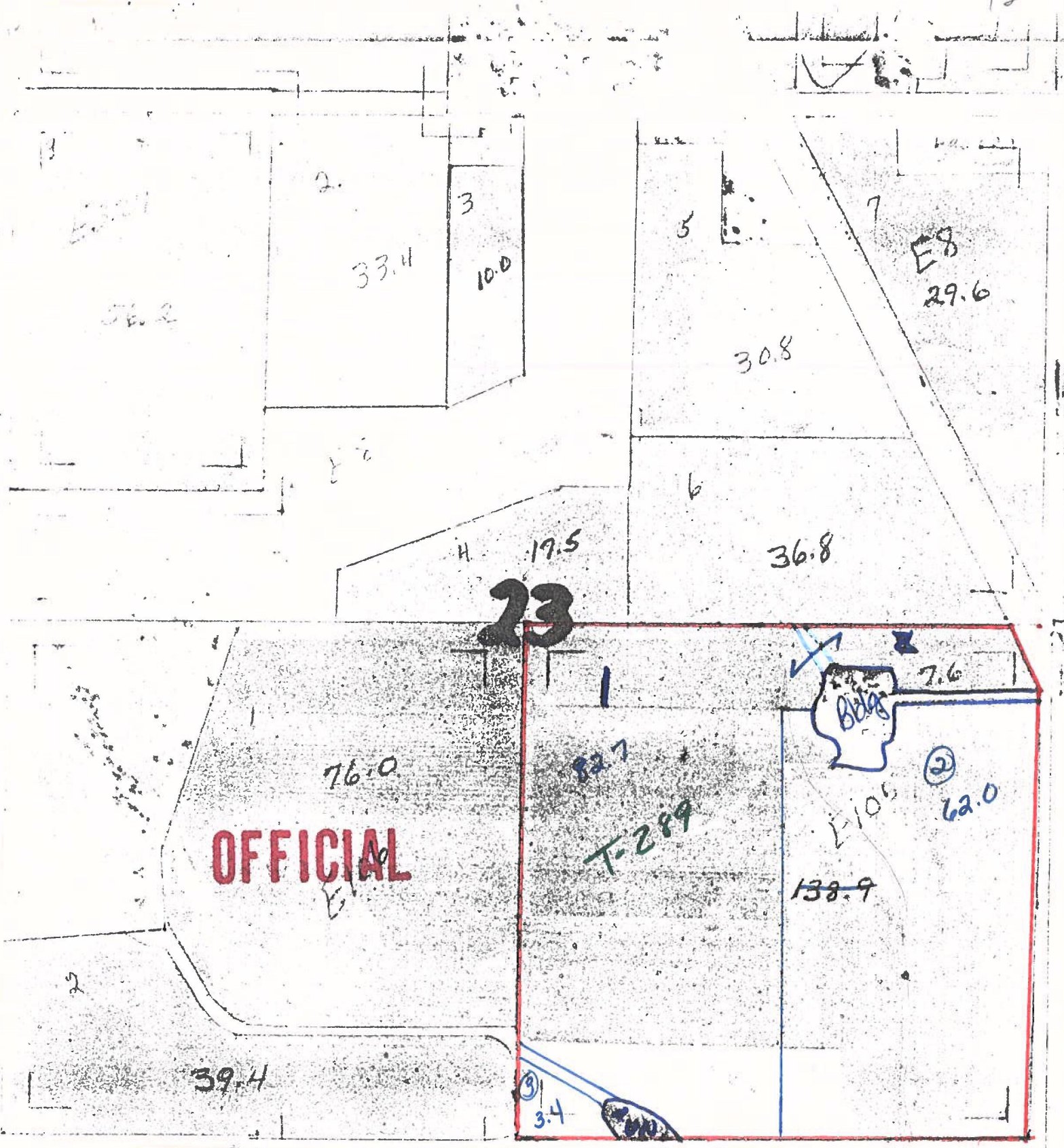
Total: 5.9

289	1	83B	0.9	1%
289	1	377B	1.8	1%
289	1	1291	3.5	2%
289	1	382	3.7	3%
289	1	1119	3.8	3%
289	1	420	4.5	3%
289	1	83C	4.7	3%
289	1	184B	5.4	4%
289	1	133	5.7	4%
289	1	350B	7.9	6%
289	1	1043	19.4	14%
289	1	1160	81.3	57%

Total: 142.6

289	3	133	1.1	34%
289	3	1043	2.1	66%

Total: 3.2



- has not been field checked. Soil maps indicate area may contain wetlands.

33.1

10.0

28.0

29.6

17.5

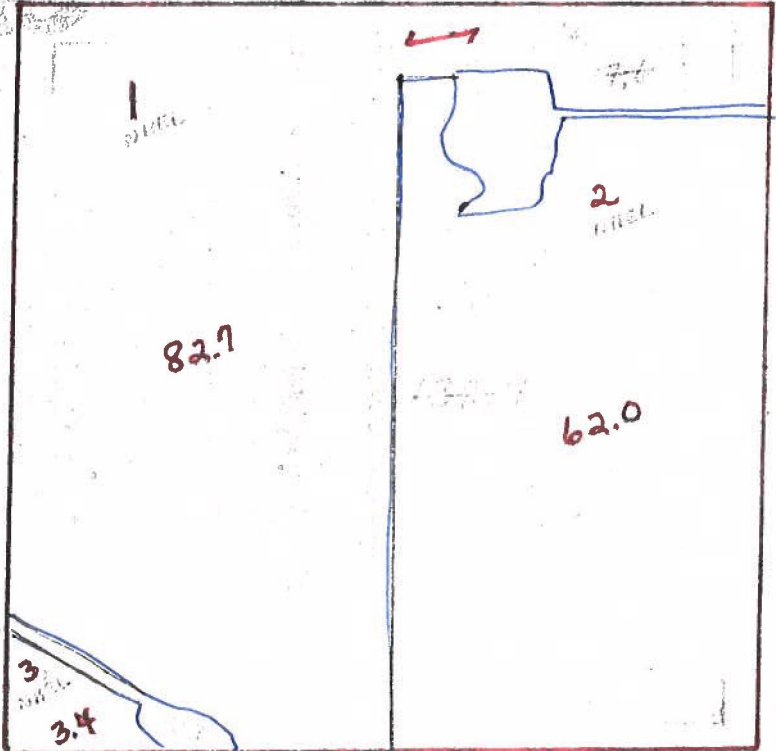
36.8

T 289

76.0

51.0

39.4



HIGHLY ERODIBLE LAND AND WETLAND CONSERVATION DETERMINATION

3. NAME OF USDA AGENCY OR PRODUCER REQUESTING DETERMINATION

4. FARM NO. AND TRACT NO. (S)

5. COUNTY

SECTION I - HIGHLY ERODIBLE LAND

6. Is a soil survey now available for making a highly erodible land determination?

7. Are there highly erodible soil map units on this farm?

8. a. List highly erodible tract and fields that, according to ASCS records, were used to produce an agricultural commodity in any crop year during 1981-1985.

b. Is an approved conservation plan being actively applied on all of these fields? If "no," list the tract and fields (from the ASCS records) on which a plan is not being applied.

9. a. List highly erodible tract and fields that, according to ASCS records, have been or will be converted for the production of agricultural commodities, were not used for this purpose in any crop year during 1981-1985, and were not enrolled in a USDA set-aside or diversion program.

b. Is an approved conservation system being used on these fields? If "no," list the tract and fields (from the ASCS records) on which a system is not being used.

10. Are there other fields or unnumbered areas that (1) have highly erodible map units, (2) were not used to produce an agricultural commodity in any crop year after 1980, and (3) were not enrolled in a USDA set-aside or diversion program in any crop year during 1981-1985?

11. CERTIFICATION: The (no.) conservation plan(s) was (were) approved by the

Conservation District on

19 , and conform with technical requirements of the SCS field office technical guide. Conservation systems included in the conservation plan(s) applied (no.).

SECTION II - WETLAND

12. Are hydric soils on this farm? If "yes," list tract and fields (from the ASCS records) or unnumbered areas (un) in which they occur.

13. Do fields that were or will be used to produce an agricultural commodity contain wetland? If "yes," list tract and fields, outline the wetland areas within fields on the ASCS photograph(s), and mark with "w" for wetland; "aw" for artificial and irrigation induced wetland; "mw" for wetland on which the conversion would result in minimal effect.

14. Are there converted wetlands on this farm that have been converted since December 23, 1985? If "yes," list the tract and fields, outline converted wetlands on the ASCS photograph(s), and mark with "cw".

15. The wetland determination was done in the office ☐ field ☐.16. This determination was hand delivered ☐ mailed ☐ to the producer on (DATE)

Any producer who does not agree with this determination may request reconsideration from the person making this determination. This request is a prerequisite for any further appeal. The request must be in writing and must set forth reasons for the request. The request must be mailed or delivered within 15 days after written notice of the determination is mailed to or otherwise made available to the producer.

17. REMARKS

6665 combined 1 + 2 still NHEC.

18. SIGNATURE OF SCS DISTRICT CONSERVATIONIST

DATE

HIGHLY ERODIBLE LAND AND WETLAND
CONSERVATION DETERMINATION

Willis Primus

9/16/89

3. County

Benton

4. Name of USDA Agency or Person Requesting Determination

ASCS

5. Farm No. and Tract No.

246a

t 289

SECTION I - HIGHLY ERODIBLE LAND

6. Is soil survey now available for making a highly erodible land determination?	Yes	No	Field No.(s)	Total Acres
7. Are there highly erodible soil map units on this farm?				
8. List highly erodible fields that, according to ASCS records, were used to produce an agricultural commodity in any crop year during 1981-1985.				
9. List highly erodible fields that have been or will be converted for the production of agricultural commodities and, according to ASCS records, were not used for this purpose in any crop year during 1981-1985; and were not enrolled in a USDA set-aside or diversion program.				
10. This Highly Erodible Land determination was completed in the: Office <input type="checkbox"/> Field <input type="checkbox"/>				

NOTE: If you have highly erodible cropland fields, you may need to have a conservation plan developed for these fields. For further information, contact the local office of the Soil Conservation Service.

SECTION II - WETLAND

11. Are there hydric soils on this farm?	Yes	No	Field No.(s)	Total Wetland Acres
List field numbers and acres, where appropriate, for the following EXEMPTED WETLANDS:				
12. Wetlands (W), including abandoned wetlands, or Farmed Wetlands (FW). Wetlands may be farmed under natural conditions. Farmed Wetlands may be farmed and maintained in the same manner as they were prior to December 23, 1985, as long as they are not abandoned.			02	1-1
13. Prior Converted Wetlands (PC) - The use, management, drainage, and alteration of prior converted wetlands (PC) are not subject to FSA unless the area reverts to wetland as a result of abandonment. You should inform SCS of any area to be used to produce an agricultural commodity that has not been cropped, managed, or maintained for 5 years or more.				
14. Artificial Wetlands (AW) - Artificial Wetlands includes irrigation induced wetlands. These Wetlands are not subject to FSA.				
15. Minimal Effect Wetlands (MW) - These wetlands are to be farmed according to the minimal effect agreement signed at the time the minimal effect determination was made.				

NON-EXEMPTED WETLANDS:

16. Converted Wetlands (CW) - In any year that an agricultural commodity is planted on these Converted Wetlands, you will be ineligible for USDA benefits. If you believe that the conversion was commenced before December 23, 1985, or that the conversion was caused by a third party, contact the ASCS office to request a commenced or third party determination.				
17. The planned alteration measures on wetlands in fields _____ are considered maintenance and are in compliance with FSA.				
18. The planned alteration measures on wetlands in fields _____ are not considered to be maintenance and if installed will cause the area to become a Converted Wetland (CW). See Item 16 for information on CW.				
19. This wetland determination was completed in the: Office <input checked="" type="checkbox"/> Field <input type="checkbox"/>				
20. This determination was: Delivered <input type="checkbox"/> Mailed <input checked="" type="checkbox"/> To the Person on Date: APR 13 1991				

NOTE: If you do not agree with this determination, you may request a reconsideration from the person that signed this form in Block 22 below. The reconsideration is a prerequisite for any further appeal. The request for the reconsideration must be in writing and must state your reasons for the request. The request must be mailed or delivered within 15 days after this determination is mailed to or otherwise made available to you. Please see reverse side of the producer's copy of this form for more information on appeals procedure.

NOTE: If you intend to convert additional land to cropland or alter any wetlands, you must initiate another Form AD-1026 at the local office of ASCS. Abandonment is where land has not been cropped, managed, or maintained for 5 years or more. You should inform SCS if you plan to produce an agricultural commodity on abandoned wetlands.

21. Remarks "Smaller streams are not delineated on the attached photo but may be FSA wetlands. Before initiating any action to alter any stream channel, check with SCS." WEL determinations were sent earlier and this CPA-026 only covers the wetland portion of FSA.

22. Signature of SCS District Conservationist

James H. Brown

23. Date

6/27/90

Assistance and programs of the Soil Conservation Service available without regard to race, religion, color, sex, age, handicap, etc.

SCS Copy