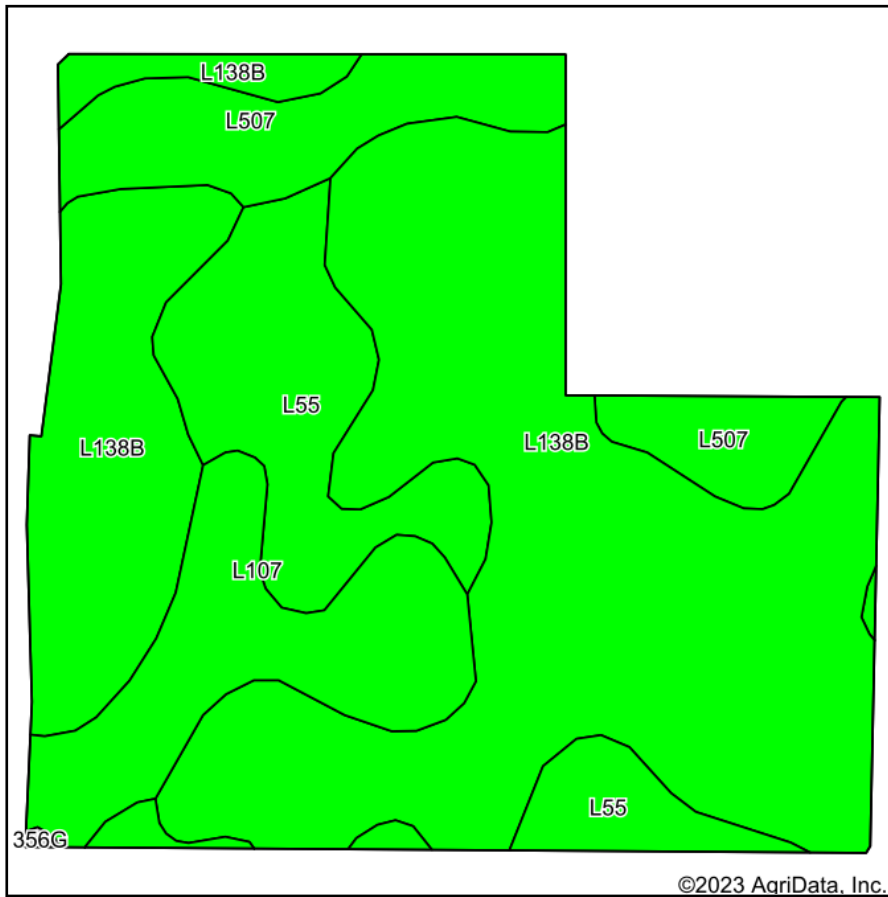
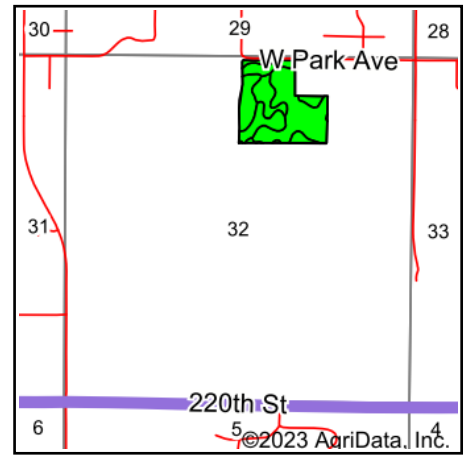


# Soils Map



Soils data provided by USDA and NRCS.



State: **Iowa**  
 County: **Boone**  
 Location: **32-84N-26W**  
 Township: **Des Moines**  
 Acres: **32.06**  
 Date: **10/9/2023**



Maps Provided By:



Area Symbol: IA015, Soil Area Version: 30										
Code	Soil Description	Acres	Percent of field	CSR2 Legend	Non-Irr Class *c	*i Corn Bu	*i Soybeans Bu	CSR2**	CSR	*n NCCPI Soybeans
L138B	Clarion loam, Bemis moraine, 2 to 6 percent slopes	19.53	60.9%		Ile	220.8	64.0	88		79
L55	Nicollet loam, 1 to 3 percent slopes	4.99	15.6%		Ie	0.0	0.0	91		84
L107	Webster clay loam, Bemis moraine, 0 to 2 percent slopes	3.85	12.0%		Ilw	0.0	0.0	88		83
L507	Canisteo clay loam, Bemis moraine, 0 to 2 percent slopes	3.69	11.5%		Ilw	0.0	0.0	87		81
Weighted Average					1.84	134.5	39	88.4	*-	*n 80.5

\*\*IA has updated the CSR values for each county to CSR2.

\*- CSR weighted average cannot be calculated on the current soils data, use prior data version for csr values.

\*i Yield data provided by the ISPAID Database version 8.1.1 developed by IA State University.

\*n: The aggregation method is "Weighted Average using all components"

\*c: Using Capabilities Class Dominant Condition Aggregation Method

Soils data provided by USDA and NRCS.