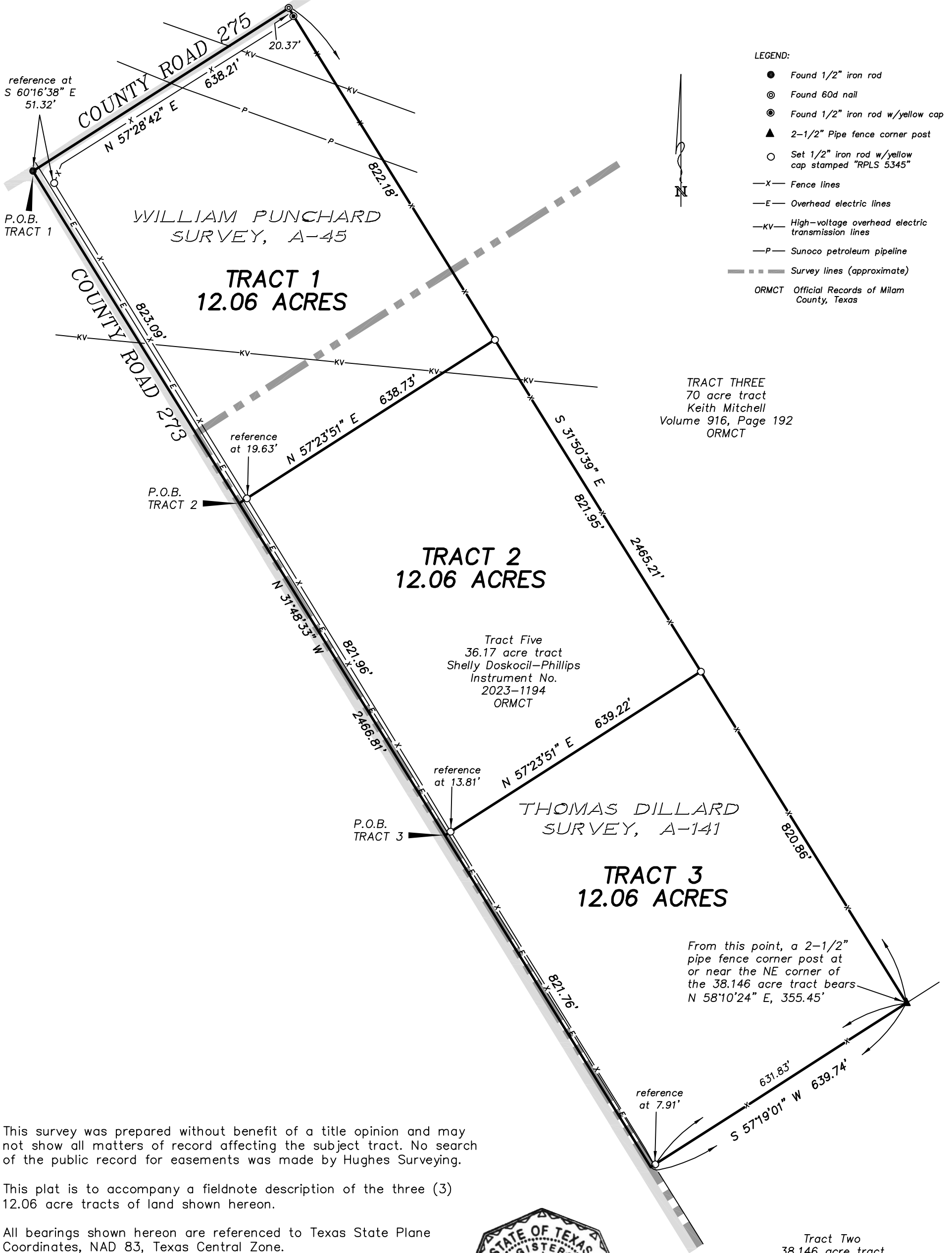


MILAM COUNTY, TEXAS



This survey was prepared without benefit of a title opinion and may not show all matters of record affecting the subject tract. No search of the public record for easements was made by Hughes Surveying.

This plat is to accompany a fieldnote description of the three (3) 12.06 acre tracts of land shown hereon.

All bearings shown hereon are referenced to Texas State Plane Coordinates, NAD 83, Texas Central Zone.

I, Don Randall Hughes, do hereby certify that this plat correctly represents a survey made on the ground under my direction and supervision on September 14, 2023.

Don Randall Hughes Registered Professional Land Surveyors No. 5345



DATE:	9-14-23
JOB NO.:	7283
DRAWN BY:	LEM
DWG. NO.:	11-1107 Division
SCALE:	1"=200'

Hughes Surveying
Texas Board of Professional Engineers and Land Surveyors, Firm Number 10055300
P. O. BOX 1135
212 N. CENTRAL AVENUE
CAMERON, TEXAS 76520
PHONE (254) 697-3646 FAX (254) 697-8776