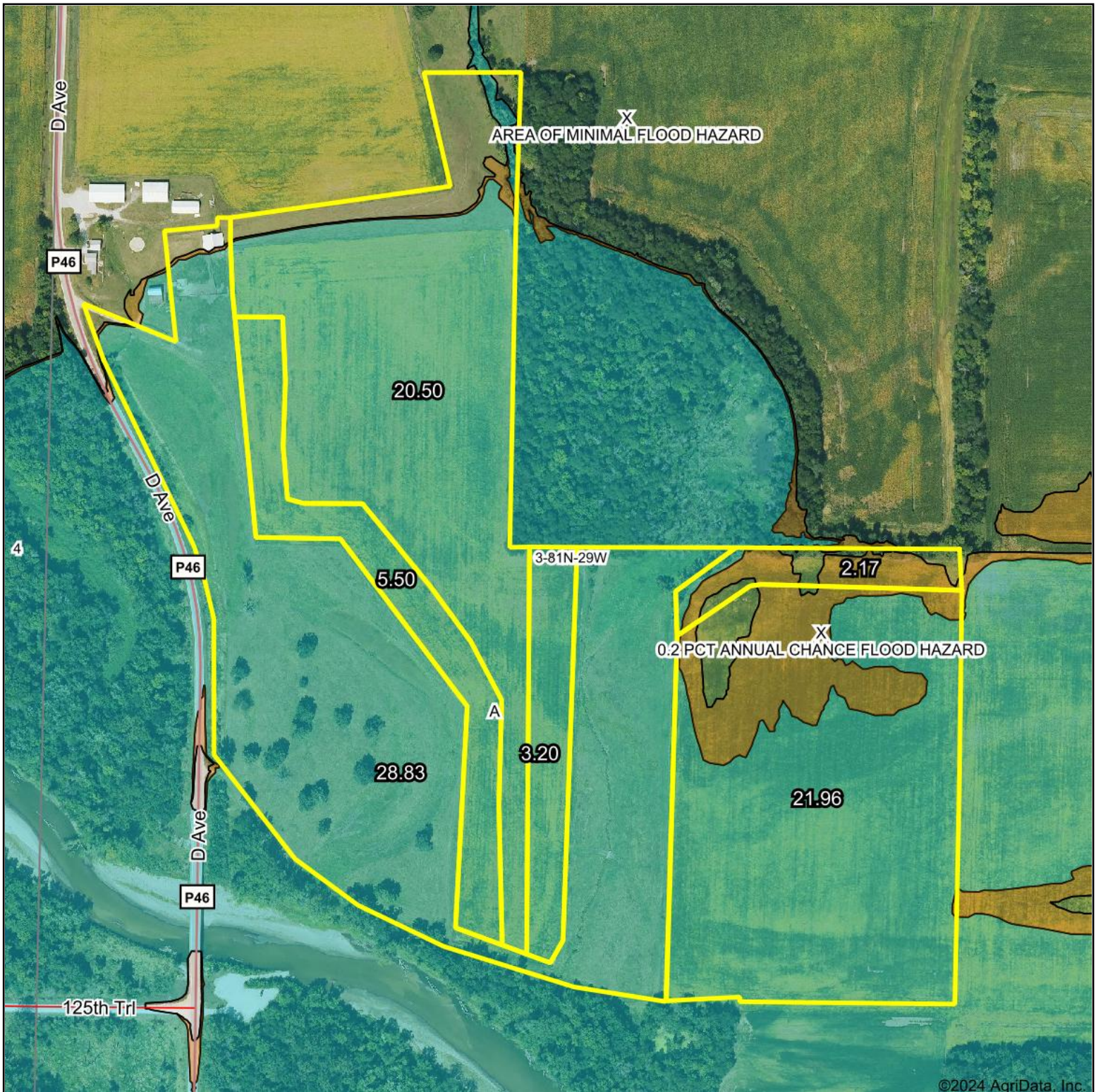


FEMA Flood Map



Boundary Center: 41° 51' 22.69, -94° 13' 1.8

0ft 445ft 889ft

3-81N-29W
Dallas County
Iowa



Maps Provided By:
surety
CUSTOMIZED ONLINE MAPPING
© AgriData, Inc. 2023 www.AgriDataInc.com

1/16/2024

Flood related information provided by FEMA