

**One Equity Share at  
Miller Point Hunting Club  
Coahoma County, MS & Phillips County, AR  
\$650,000**



**SMALLTOWN**  
HUNTING PROPERTIES  
& REAL ESTATE<sup>SM</sup>

Office 769-888-2522

# Property Profile

## 1 Equity Share at Miller Point Hunting Club

### Location:

- Coahoma County, MS and Phillips County, AR
- 10± Miles NW of Clarksdale, MS
- 68± Miles SW of Memphis, TN, 94± Miles SE of Little Rock, AR, 142± Miles NW of Jackson, MS, and 306± Miles NW of New Orleans

### Coordinates:

- 34.3217, -90.6574

### Property Information:

- 7,000± Acres on the MS River Bottom's- All Owned with Timber Rights
- Land Features: Mature Timber, Cutover, Wildlife Plots, Sloughs
- 40+ Wildlife Plots with Stands- Open to All Members
- Skinning Shed with Walk-In Cooler
- Archery, Rifle, and Skeet Shooting Ranges
- Mississippi River Frontage with Boat Ramp for Duck Hunting and Summer Fun
- Enjoy Mississippi and Arkansas Hunting Seasons (Hunting Licenses Reciprocate)
- Horseshoe Lake Hunting & Fishing
- Family Oriented - Kids & Wives Encouraged
- Top-Notch Hunting (Deer, Turkey, Ducks, Hog, and All Small Game)
- Strict Deer Management for Nearly 3 Decades
- 3 to 4 Duck Holes Depending on Water Levels from the MS River
- Fulltime Caretaker - Stephan Potgeiter
- Wildlife Biologist - Jim Lipe (Annual Deer Survey Conducted)
- Membership Subject to Approval of Club
- 2023 Annual Dues - \$7,500/\$250,000 Debt on Club as of 9/22/2023

### Property Use:

- Recreational (Everything Outdoors)
- Weekend Getaway



**MICHAEL OSWALT** | PRINCIPAL BROKER  
C: 662-719-3967 | michael@smalltownproperties.com



**FORD TRUE** | LAND SPECIALIST  
C: 662-645-1119 | ford@smalltownproperties.com

Information is believed to be accurate but not guaranteed.

One equity share is now available for purchase at Miller Point Hunting Club, located in Coahoma County, MS, and Phillips County, AR. It was established in 1986, and except for the all-weather road system, man's footprint has scarcely altered the landscape of towering oaks, cottonwoods, and pecans. Miller Point is a prestigious club on the Mississippi Riverbanks encompassing approximately 7,000± acres of the finest hunting ground you could ask for. Wildlife is abundant along the river bottom corridor, and Miller Point is right in the midst. The club enjoys gated access along the MS side of the MS River Levee; however, the club owns land in Mississippi and Arkansas. Once you enter the gate, you will experience the pride of ownership and the meaning of “stewards of the land”. The facilities are second to none with year-round fun for your entire family. You will have a new hunting family the minute you join. If you are looking for a MS River Club, give Michael Oswalt or Ford True a call for your private tour today.



**MICHAEL OSWALT** | PRINCIPAL BROKER  
C: 662-719-3967 | michael@smalltownproperties.com

**FORD TRUE** | LAND SPECIALIST  
C: 662-645-1119 | ford@smalltownproperties.com

Information is believed to be accurate but not guaranteed.

4848 Main St. - Flora, MS 39071 | O: 769-888-2522 | smalltownproperties.com



**MICHAEL OSWALT** | PRINCIPAL BROKER  
C: 662-719-3967 | michael@smalltownproperties.com



**SMALLTOWN**  
HUNTING PROPERTIES  
& REAL ESTATE<sup>SM</sup>

Information is believed to be accurate but not guaranteed.



**FORD TRUE** | LAND SPECIALIST  
C: 662-645-1119 | ford@smalltownproperties.com

4848 Main St. - Flora, MS 39071 | O: 769-888-2522 | smalltownproperties.com



**MICHAEL OSWALT** | PRINCIPAL BROKER  
C: 662-719-3967 | michael@smalltownproperties.com



**SMALLTOWN**  
HUNTING PROPERTIES  
& REAL ESTATE<sup>SM</sup>

Information is believed to be accurate but not guaranteed.



**FORD TRUE** | LAND SPECIALIST  
C: 662-645-1119 | ford@smalltownproperties.com

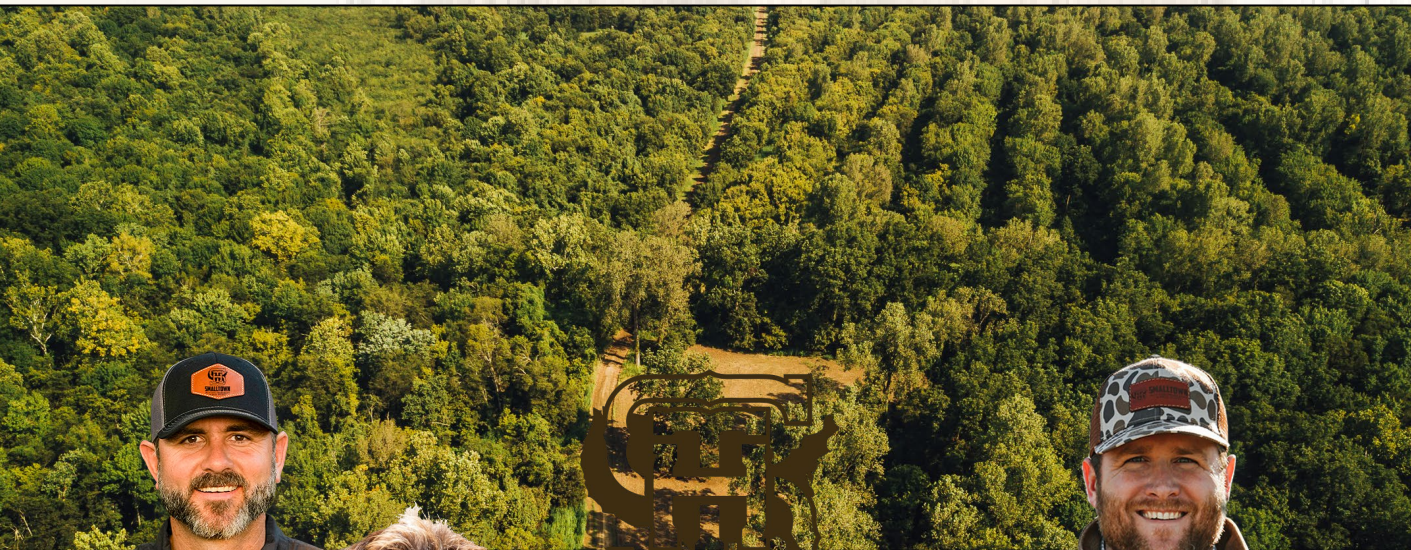
4848 Main St. - Flora, MS 39071 | O: 769-888-2522 | smalltownproperties.com



**MICHAEL OSWALT** | PRINCIPAL BROKER  
C: 662-719-3967 | michael@smalltownproperties.com

**FORD TRUE** | LAND SPECIALIST  
C: 662-645-1119 | ford@smalltownproperties.com

4848 Main St. - Flora, MS 39071 | O: 769-888-2522 | smalltownproperties.com

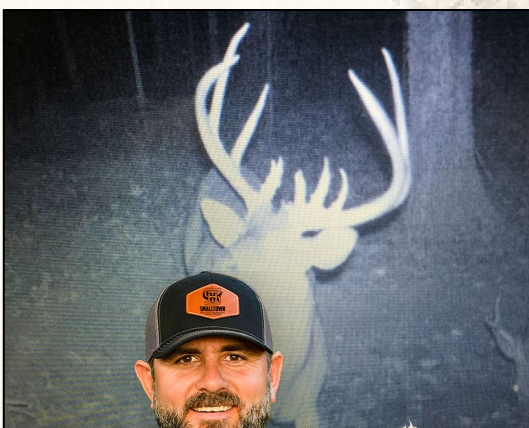
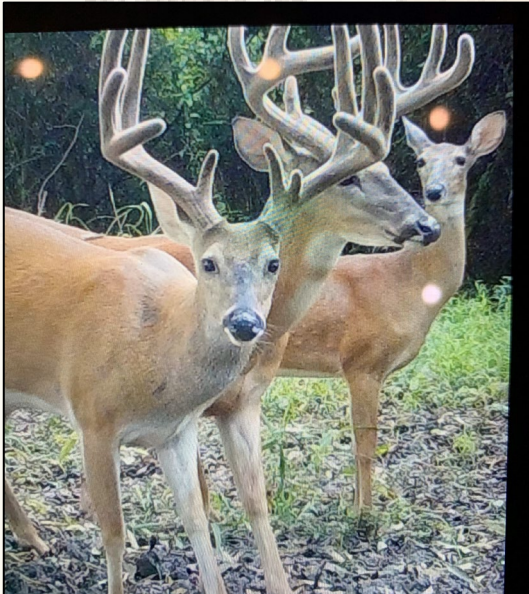
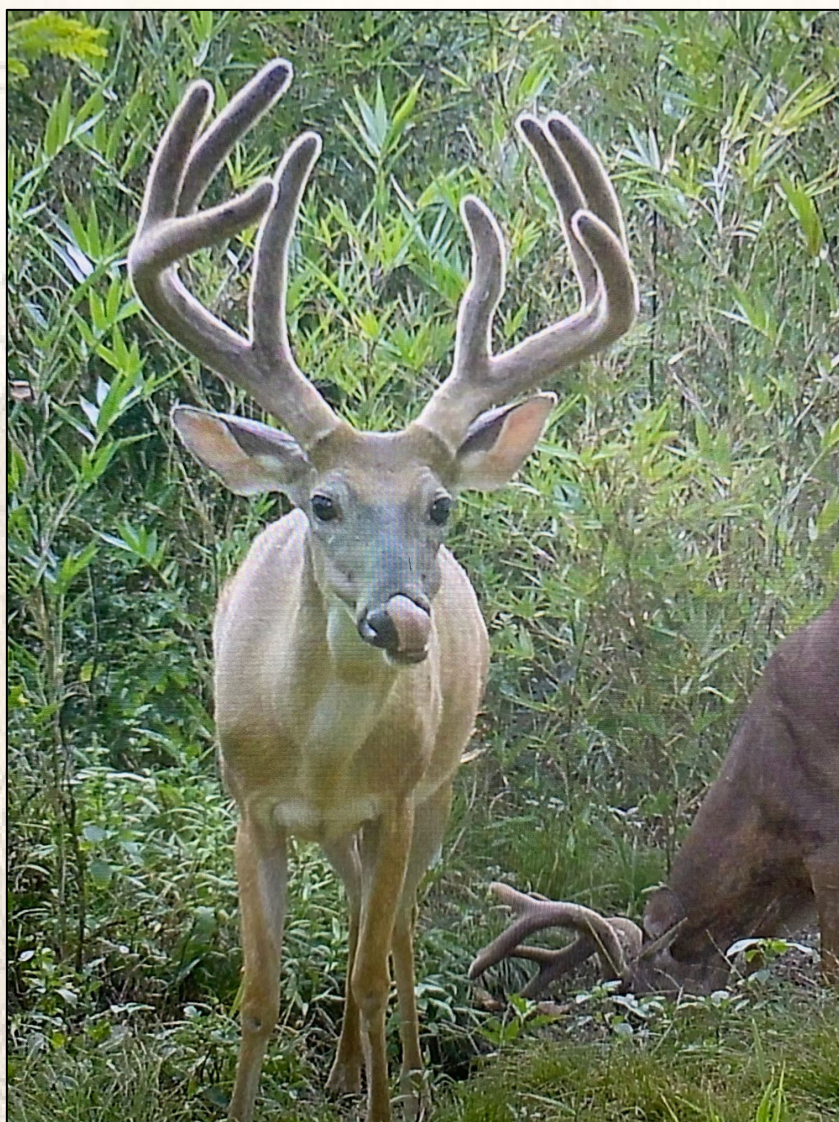


**SMALLTOWN**  
HUNTING PROPERTIES  
& REAL ESTATE<sup>SM</sup>

**MICHAEL OSWALT** | PRINCIPAL BROKER  
C: 662-719-3967 | michael@smalltownproperties.com

**FORD TRUE** | LAND SPECIALIST  
C: 662-645-1119 | ford@smalltownproperties.com

4848 Main St. - Flora, MS 39071 | O: 769-888-2522 | smalltownproperties.com

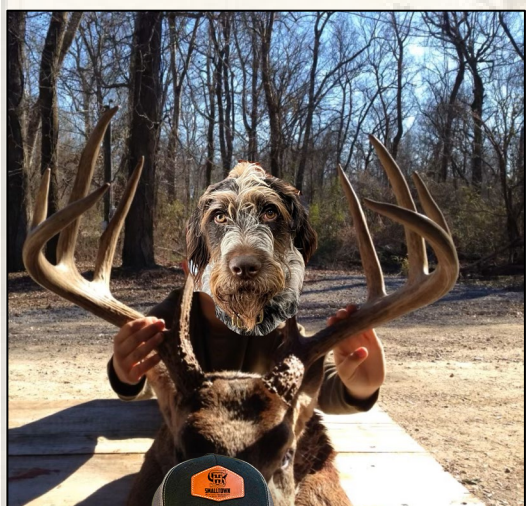
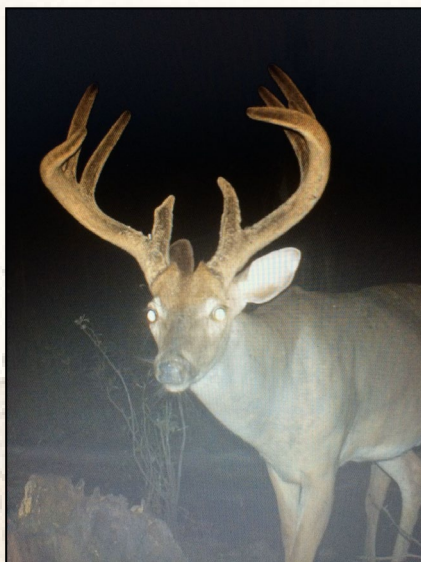


**MICHAEL OSWALT** | PRINCIPAL BROKER  
C: 662-719-3967 | michael@smalltownproperties.com

**FORD TRUE** | LAND SPECIALIST  
C: 662-645-1119 | ford@smalltownproperties.com

Information is believed to be accurate but not guaranteed.

4848 Main St. - Flora, MS 39071 | O: 769-888-2522 | smalltownproperties.com



**MICHAEL OSWALT** | PRINCIPAL BROKER  
C: 662-719-3967 | michael@smalltownproperties.com

**FORD TRUE** | LAND SPECIALIST  
C: 662-645-1119 | ford@smalltownproperties.com

Information is believed to be accurate but not guaranteed.

4848 Main St. - Flora, MS 39071 | O: 769-888-2522 | smalltownproperties.com



**MICHAEL OSWALT** | PRINCIPAL BROKER  
C: 662-719-3967 | michael@smalltownproperties.com



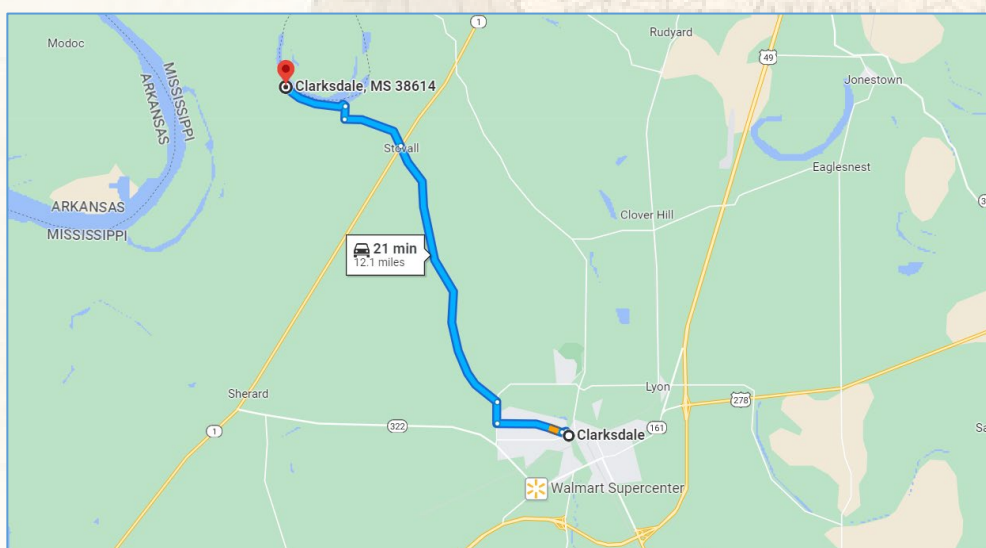
**SMALLTOWN**  
HUNTING PROPERTIES  
& REAL ESTATE<sup>SM</sup>

Information is believed to be accurate but not guaranteed.



**FORD TRUE** | LAND SPECIALIST  
C: 662-645-1119 | ford@smalltownproperties.com

4848 Main St. - Flora, MS 39071 | O: 769-888-2522 | smalltownproperties.com



## Google Map Directions



**MICHAEL OSWALT** | PRINCIPAL BROKER  
C: 662-719-3967 | michael@smalltownproperties.com



**FORD TRUE** | LAND SPECIALIST  
C: 662-645-1119 | ford@smalltownproperties.com

Information is believed to be accurate but not guaranteed.

4848 Main St. - Flora, MS 39071 | O: 769-888-2522 | smalltownproperties.com