



TAYLOR COUNTY TIMBER HUNTING & HOMESITE

1050 JAMES BETHEA ROAD
PERRY, FL 32348

Ken Rembert

Advisor

O: 877.518.5263 x385 | C: 352.316.0101

ken.rembert@svn.com

Property Overview



Sale Price

\$495,000

OFFERING SUMMARY

Acreage:	173 Acres
Price / Acre:	\$2,861
City:	Perry
County:	Taylor
Property Type:	Land: Timberland
Video:	View Here

PROPERTY OVERVIEW

Taylor County Timber Hunting & Homesite is a 173-acre property located east of Perry, Florida. This diverse tract features 6-year-old pine plantations, Cypress heads, and accessible roads. With a dry homesite/camp equipped with electricity and septic, it offers convenience and comfort. Abundant wildlife and income-producing pine plantations make it ideal for hunting and investment. The property's seclusion, coupled with well-maintained interior roads, creates a serene and accessible retreat in Florida's scenic landscape.

Specifications & Features



SPECIFICATIONS & FEATURES

Land Types:

- Hunting & Recreation Properties
- Timberland

Uplands / Wetlands:

Upland pine plantation with scattered cypress heads

Water Source & Utilities:

Electric utility on site with septic and well

Road Frontage:

Frontage on James Bethea Road

Nearest Point of Interest:

Perry

Current Use:

Pine plantation investment, hunting, homesite

Potential Recreational / Alt Uses:

Hunting, Homesite, Recreation

Land Cover:

Pine Plantation and Cypress Heads

Game Population Information:

Deer, Turkey, Hog, and small game

Age of Stages of Timber:

6 yr planted slash pine

Game Cam Photos



Campsite Or Potential Homesite

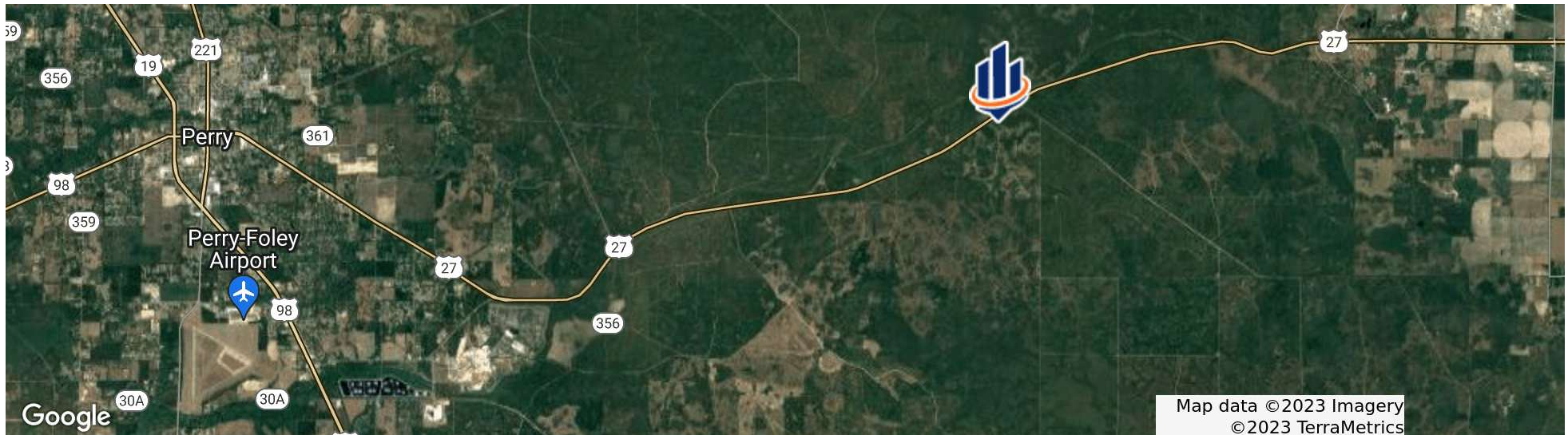


Location



LOCATION & DRIVING DIRECTIONS

Parcel:	9107-400 9107-300 9107-200
GPS:	30.112957, -83.41177499999999
Driving Directions:	East of Perry on State Road 27 to James Bethea Road or West of Mayo on State Road 27 to James Bethea Road.
Showing Instructions:	Please call the agent to show

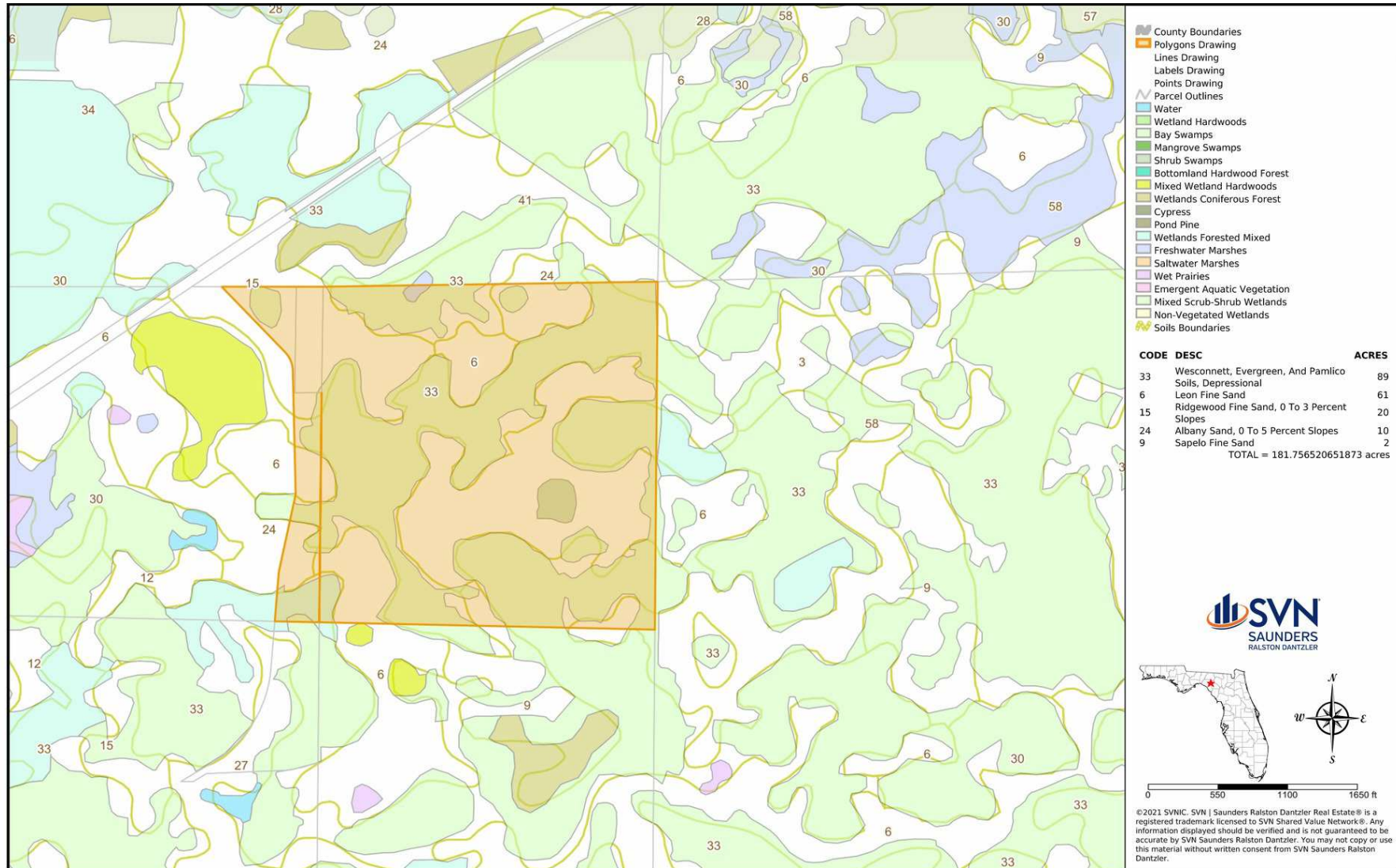


Aerial Photos





Soils Map





Advisor Biography



KEN REMBERT

Advisor

ken.rembert@svn.com

Direct: 877.518.5263 x385 | Cell: 352.316.0101

FL #SL3458872

PROFESSIONAL BACKGROUND

Ken Rembert is an Advisor at SVN | Saunders Ralston Dantzler Real Estate in Lakeland, Florida.

Ken works with landowners and potential landowners to buy and sell property. He is deeply interested in maximizing the land's enjoyment by proper land management for hunting, fishing, and outside activities. Ken is a degreed forester who has worked in various business activities, including owning his restaurant chain for many years. His business acumen is a great advantage to his clients. Ken guides landowners through objective, data-based decisions without losing sight of the many subjective, personal goals associated with owning land.

Ken holds a B.S. in Forestry from the University of Florida and is a lifelong resident of North Florida, where he enjoys hunting and fishing. Ken has two sons, Will and Davis and he and his wife Belinda live in Alachua, Florida.

Ken specializes in:

- Forestry
- Recreational Land
- Land Management
- Wildlife Management



For more information visit www.SVNsaunders.com

HEADQUARTERS

1723 Bartow Rd
Lakeland, FL 33801
863.648.1528

ORLANDO

605 E Robinson Street, Suite 410
Orlando, Florida 32801
386.438.5896

NORTH FLORIDA

356 NW Lake City Avenue
Lake City, Florida 32055
352.364.0070

GEORGIA

203 E Monroe Street
Thomasville, Georgia 31792
229.299.8600

©2024 Saunders Ralston Dantzler Real Estate. All SVN® Offices Independently Owned and Operated SVN | Saunders Ralston Dantzler Real Estate is a full-service land and commercial real estate brokerage representing buyers, sellers, investors, institutions, and landowners since 1996. We are recognized nationally as an authority on all types of land, including agriculture, ranch, recreation, and residential development. Our commercial real estate services include property management, leasing and tenant representation, valuation, business brokerage, and advisory and counseling services for office, retail, industrial, and multifamily properties. Our firm also features an auction company, a forestry division, international partnerships, and extensive expertise in conservation easements. Located in Florida, Georgia, and Alabama, we provide proven leadership and collaborative expertise backed by the strength of the SVN® global platform.

