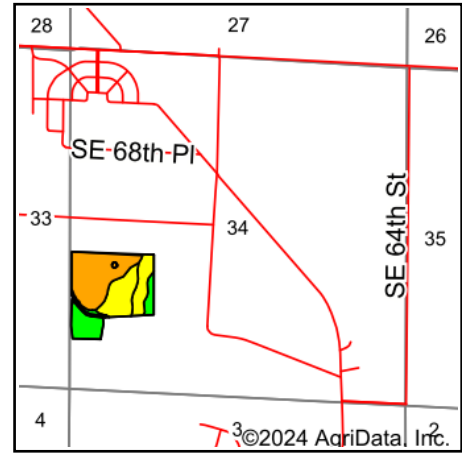
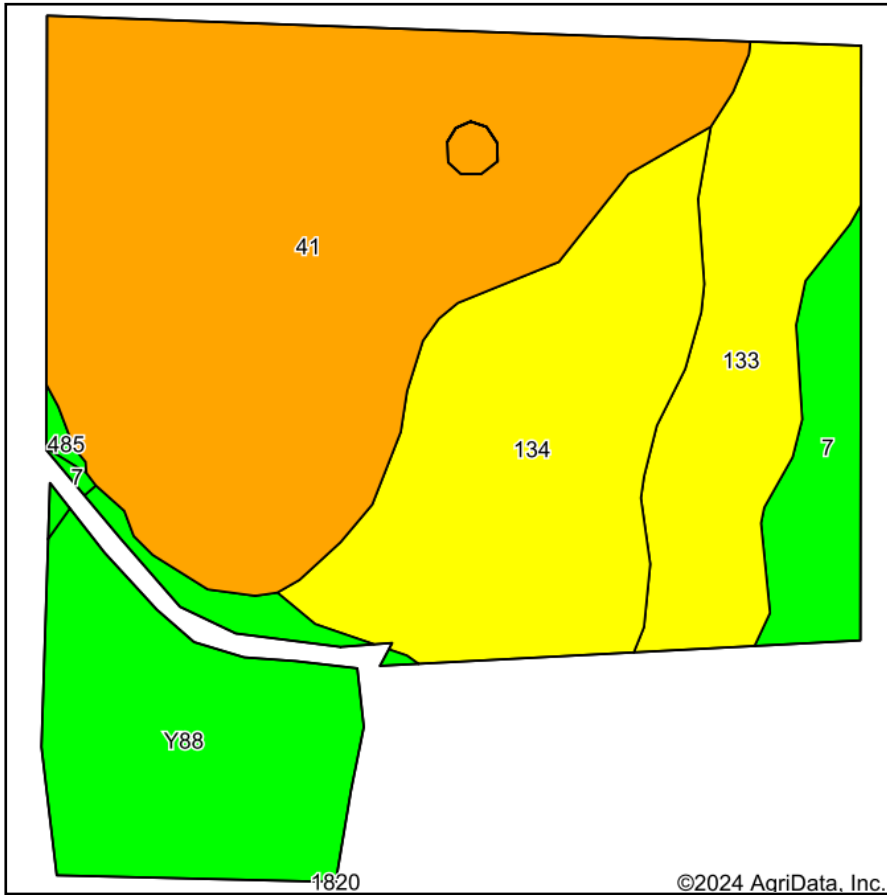


CRP Soils Map



State: **Iowa**
 County: **Polk**
 Location: **34-78N-23W**
 Township: **Allen**
 Acres: **32.65**
 Date: **2/7/2024**



Maps Provided By:



Area Symbol: IA153, Soil Area Version: 26

Code	Soil Description	Acres	Percent of field	CSR2 Legend	Non-Irr Class *c	Irr Class *c	CSR2**	CSR	*n NCCPI Overall	*n NCCPI Corn	*n NCCPI Small Grains	*n NCCPI Soybeans
41	Sparta loamy fine sand, 0 to 2 percent slopes	14.30	43.8%		IVs	Ile	44	47	48	48	40	23
134	Zook silty clay loam, 0 to 2 percent slopes, occasionally flooded	6.92	21.2%		IIw		70	65	78	62	46	78
Y88	Nevin silty clay loam, 0 to 2 percent slopes, rarely flooded	5.09	15.6%		Iw		95		98	98	80	88
133	Colo silty clay loam, deep loess, 0 to 2 percent slopes, occasionally flooded	4.46	13.7%		IIw		78	80	81	75	36	80
7	Wiota silty clay loam, 0 to 2 percent slopes	1.80	5.5%		I		100	95	94	94	77	80
485	Spillville loam, 0 to 2 percent slopes, occasionally flooded	0.08	0.2%		IIw		88	92	87	82	61	87
Weighted Average												
					2.66	*	65.3	*	*n 69.3	*n 65.1	*n 49.1	*n 55.9

**IA has updated the CSR values for each county to CSR2.

**IA has updated the CSR values for each county to CSR2.*- CSR weighted average cannot be calculated on the current soils data, use prior data version for csr values.

*n: The aggregation method is "Weighted Average using all components"

**IA has updated the CSR values for each county to CSR2.*- CSR weighted average cannot be calculated on the current soils data, use prior data version for csr values.*c: Using Capabilities Class Dominant Condition Aggregation Method

**IA has updated the CSR values for each county to CSR2.*- CSR weighted average cannot be calculated on the current soils data, use prior data version for csr values.*c: Using Capabilities Class Dominant Condition Aggregation Method*- Irr Class weighted average cannot be calculated on the current soils data due to missing data.