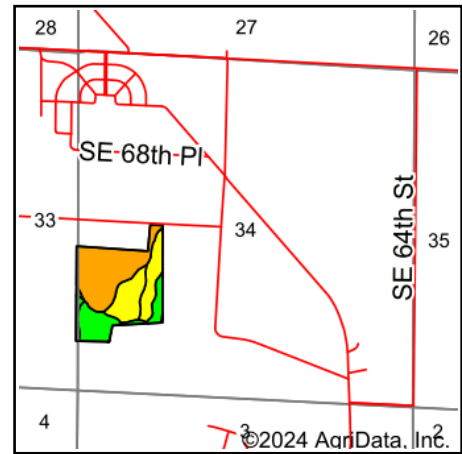
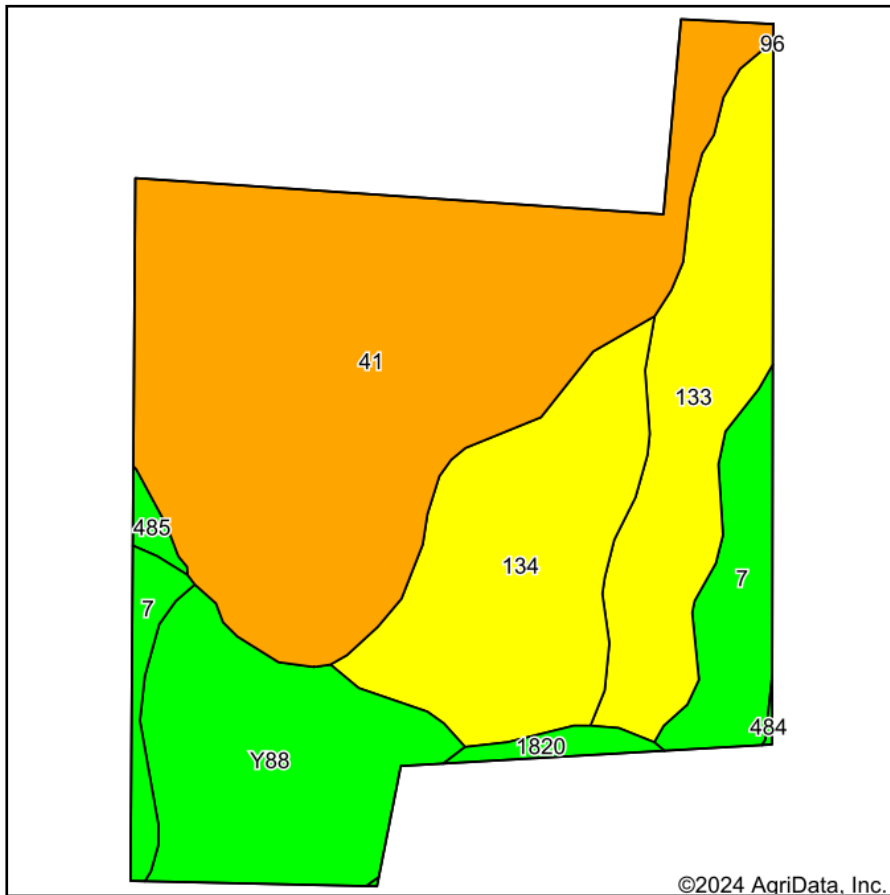


Total Soils Map



State: **Iowa**
 County: **Polk**
 Location: **34-78N-23W**
 Township: **Allen**
 Acres: **42**
 Date: **2/7/2024**



Soils data provided by USDA and NRCS.

Area Symbol: IA153, Soil Area Version: 26

Code	Soil Description	Acres	Percent of field	CSR2 Legend	Non-Irr Class *c	Irr Class *c	CSR2**	CSR	*n NCCPI Overall	*n NCCPI Corn	*n NCCPI Small Grains	*n NCCPI Soybeans		
41	Sparta loamy fine sand, 0 to 2 percent slopes	18.56	44.2%		IVs	Ile	44	47	48	48	40	23		
134	Zook silty clay loam, 0 to 2 percent slopes, occasionally flooded	7.27	17.3%		IIw		70	65	78	62	46	78		
Y88	Nevin silty clay loam, 0 to 2 percent slopes, rarely flooded	6.20	14.8%		Iw		95	98	98	98	80	88		
133	Colo silty clay loam, deep loess, 0 to 2 percent slopes, occasionally flooded	6.08	14.5%		IIw		78	80	81	75	36	80		
7	Wiota silty clay loam, 0 to 2 percent slopes	3.19	7.6%		I		100	95	94	94	77	80		
1820	Dockery-Quiver silt loams, 0 to 2 percent slopes, occasionally flooded	0.46	1.1%		IIw		87	93	93	85	49	92		
485	Spillville loam, 0 to 2 percent slopes, occasionally flooded	0.24	0.6%		IIw		88	92	87	82	61	87		
Weighted Average							2.66	*	65.9	*	*n 69.6	*n 65.8	*n 49.4	*n 55.8

**IA has updated the CSR values for each county to CSR2.

**IA has updated the CSR values for each county to CSR2.*- CSR weighted average cannot be calculated on the current soils data, use prior data version for csr values.

*n: The aggregation method is "Weighted Average using all components"

**IA has updated the CSR values for each county to CSR2.*- CSR weighted average cannot be calculated on the current soils data, use prior data version for csr values.*c: Using Capabilities Class Dominant Condition Aggregation Method

**IA has updated the CSR values for each county to CSR2.*- CSR weighted average cannot be calculated on the current soils data, use prior data version for csr values.*c: Using Capabilities Class Dominant Condition Aggregation Method*- Irr Class weighted average cannot be calculated on the current soils data due to missing data.

Soils data provided by USDA and NRCS.