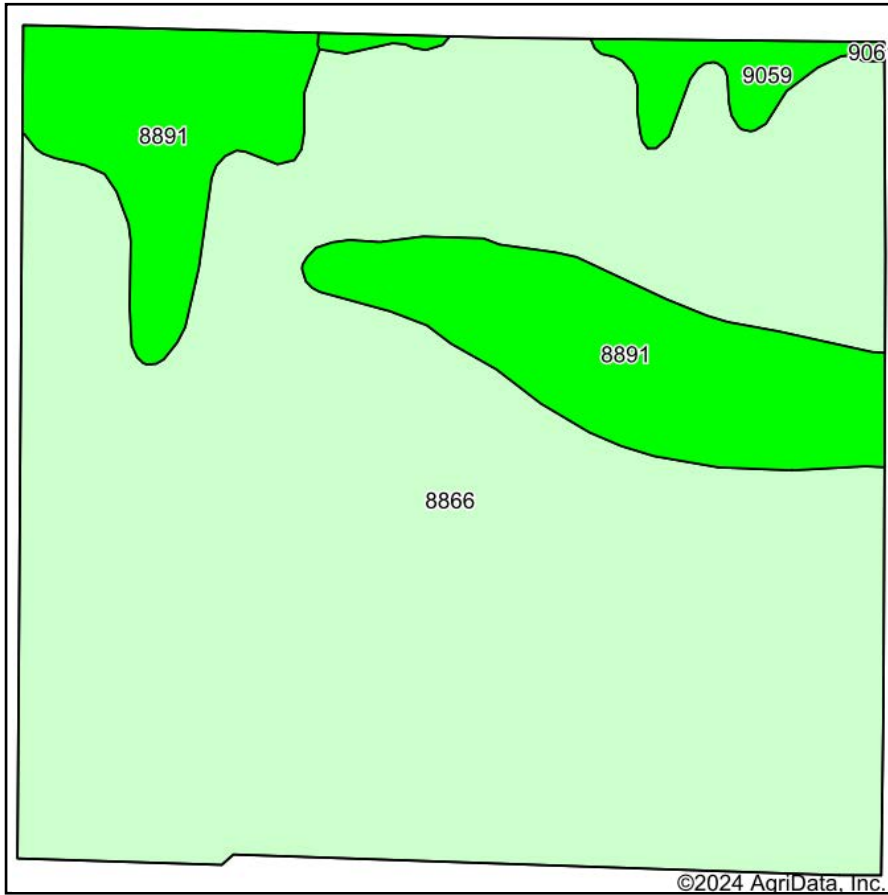
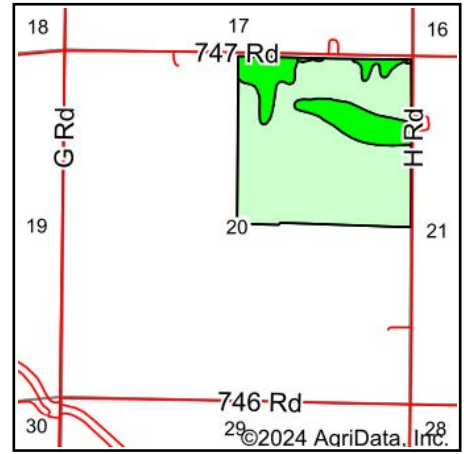
 Boundary

# Soils Map



Soils data provided by USDA and NRCS.



State: **Nebraska**  
County: **Phelps**



Maps Provided By:

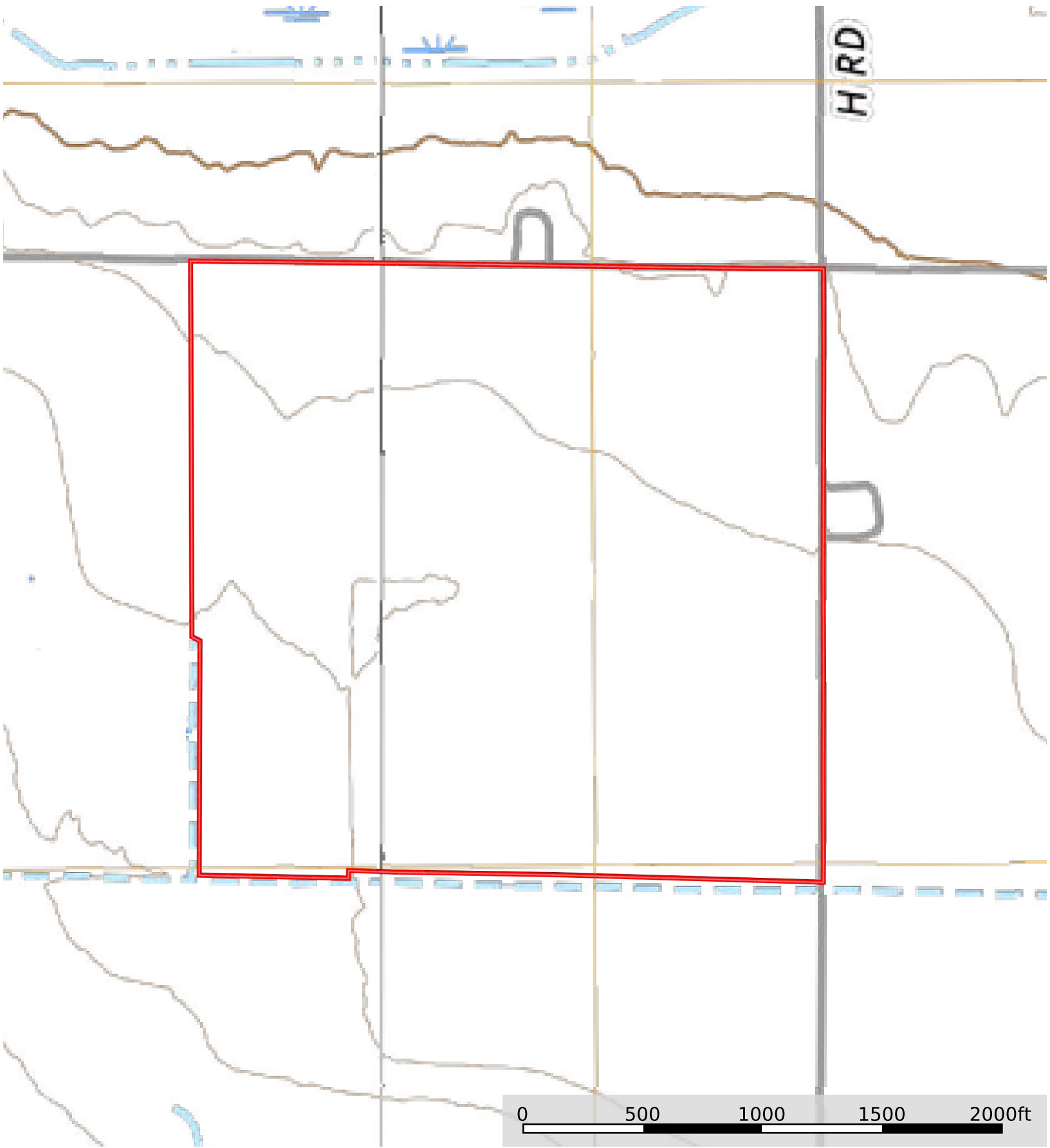



Area Symbol: NE137, Soil Area Version: 24

Code	Soil Description	Acres	Percent of field	SRPG Legend	Non-Irr Class *c	Irr Class *c	SRPG	Corn Bu	Corn Irrigated Bu	Soybeans Irrigated Bu
8866	Hord silt loam, 0 to 1 percent slopes, warm	121.72	80.6%		IIc	Ie				
8891	Kenesaw silt loam, terrace, 1 to 3 percent slopes	26.02	17.2%		Ile	Ile	67	61	140	39
9059	Kenesaw and Coly silt loams, hummocky, eroded	3.15	2.1%		IIIe	IIIe	57			
9061	Kenesaw and Coly silt loams, hummocky	0.09	0.1%		IIIe	IIIe	58			
Weighted Average					2.02	1.22	12.8	10.5	24.1	6.7

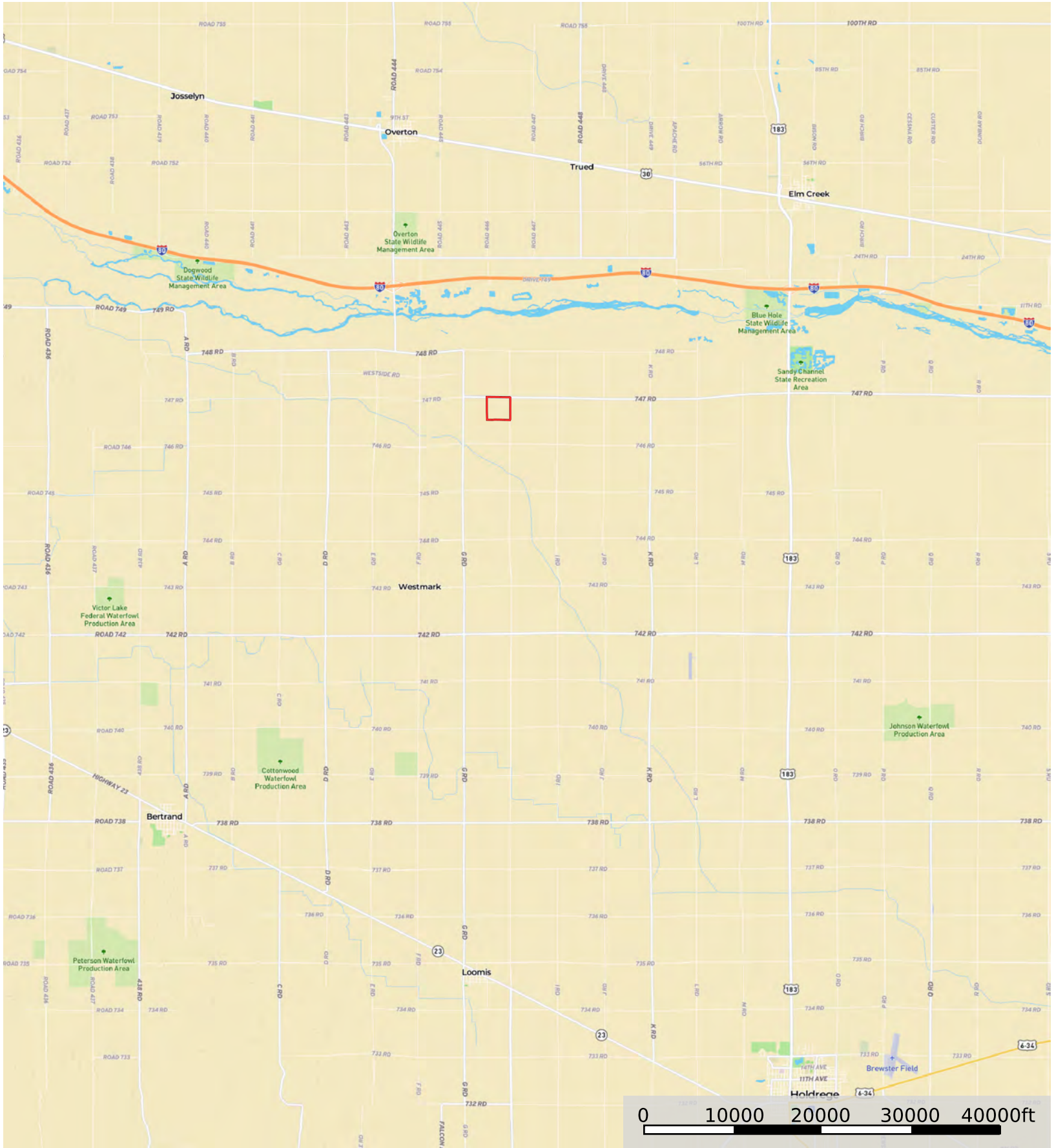
\*c: Using Capabilities Class Dominant Condition Aggregation Method

Soils data provided by USDA and NRCS.



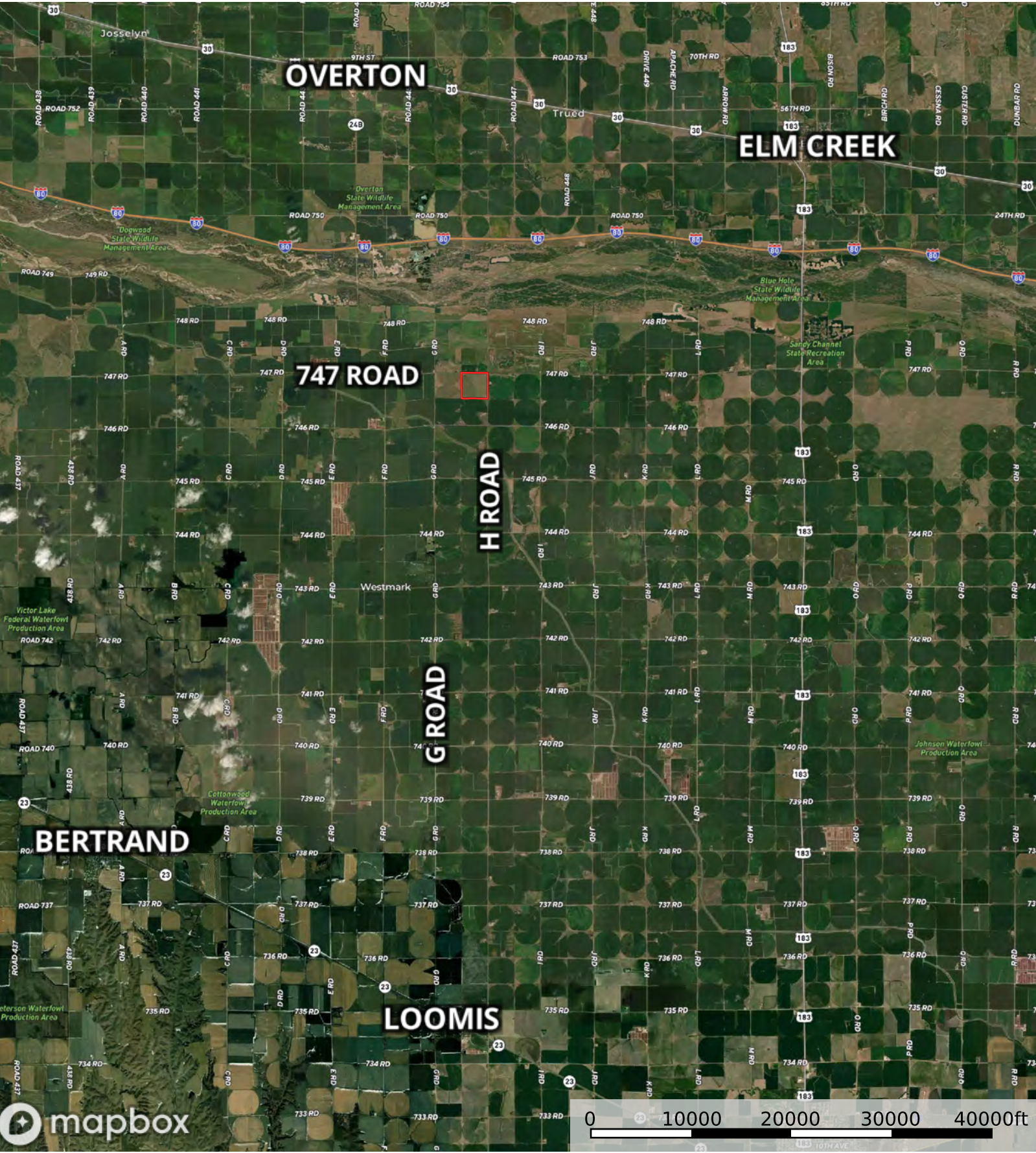
 Boundary





 Boundary





 Boundary