



FARM & RANCH

PERFECT BLEND OF COVER AND OPEN COUNTRY

3001 County Road 444 – May, TX



STEPHEN
REICH GROUP
WILLIAMS TREW REAL ESTATE

Williamstrew[☆]
A DIVISION OF EBBY HALLIDAY REAL ESTATE, INC.

LISTED BY **STEPHEN REICH GROUP** OF WILLIAMS TREW REAL ESTATE

PROPERTY SUMMARY

DESCRIPTION

This beautiful piece of land in May, Texas offers the perfect blend of cover and open country to be the ideal combination ranch. The property features a water well, three tanks, and over 100 pecan trees, providing ample water and natural resources for various activities. The sandy loam soil is ideal for farming and livestock. There are three highly productive coastal fields, additionally the property boasts the convenience of power already being on-site, making it easy to utilize the land for your needs. The presence of Post Oaks, Live Oaks, and Spanish Oaks adds to the natural beauty of the landscape, creating a picturesque setting for any potential endeavors. With a perimeter fence in place, the property is ready for your agricultural investments, such as cattle or horses. The fertile soil and diverse vegetation make it suitable for growing hay or crops as well. This is a versatile and valuable investment for anyone looking to make the most of its abundant resources and potential.

LOCATION

CITY	May	List Price	\$825,000
County	Brown	Lot Size	100 acres
Schools	May ISD	Utilities	Electricity Connected, Well
Driving Directions	Heading west on I 20, take the SH 183 exit #332 to Cisco, Brownwood. Turn left on Conrad Hilton. In approx 28 mi turn right on CR 444. The destination will be on your right.		

OFFER SUMMARY

HIGHLIGHTS

- WATER WELL
- 3 TANKS
- OVER 100 PECAN TREES
- 3 HIGHLY PRODUCTIVE COASTAL FIELDS
- NO KNOWN RESTRICTIONS
- FENCED

LISTING PRESENTED BY:



STEPHEN REICH
817-597-8884
stephen.reich@williamstrew.com



TAMMY ROKUS
817-694-8019
tammy.rokus@williamstrew.com



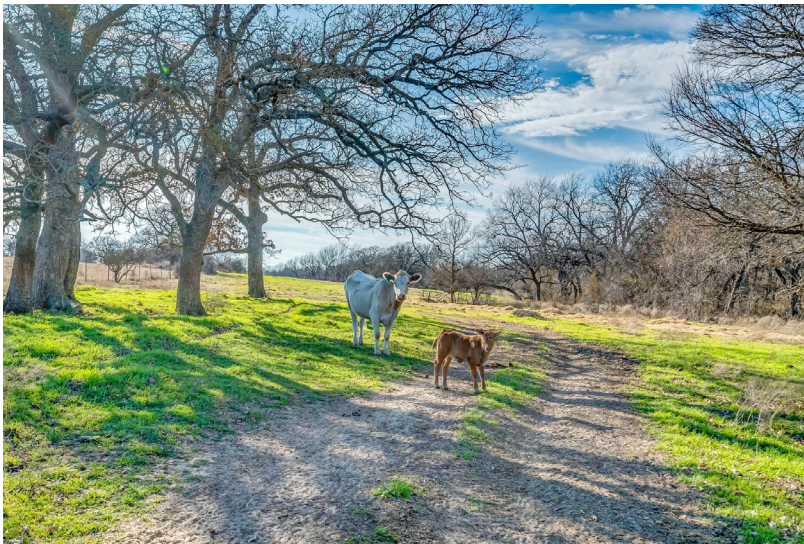
PROPERTY WEBSITE LINK:
stephenreichgroup.com/20546720



PARKER COUNTY OFFICE
400 Shops Boulevard, Ste. 200
Willow Park, TX 76087

FARM & RANCH • RESIDENTIAL • COMMERCIAL-DEVELOPMENT • LAND

PROPERTY PHOTOS



STEPHEN REICH – 817.597.8884
TAMMY ROKUS – 817.694.8019



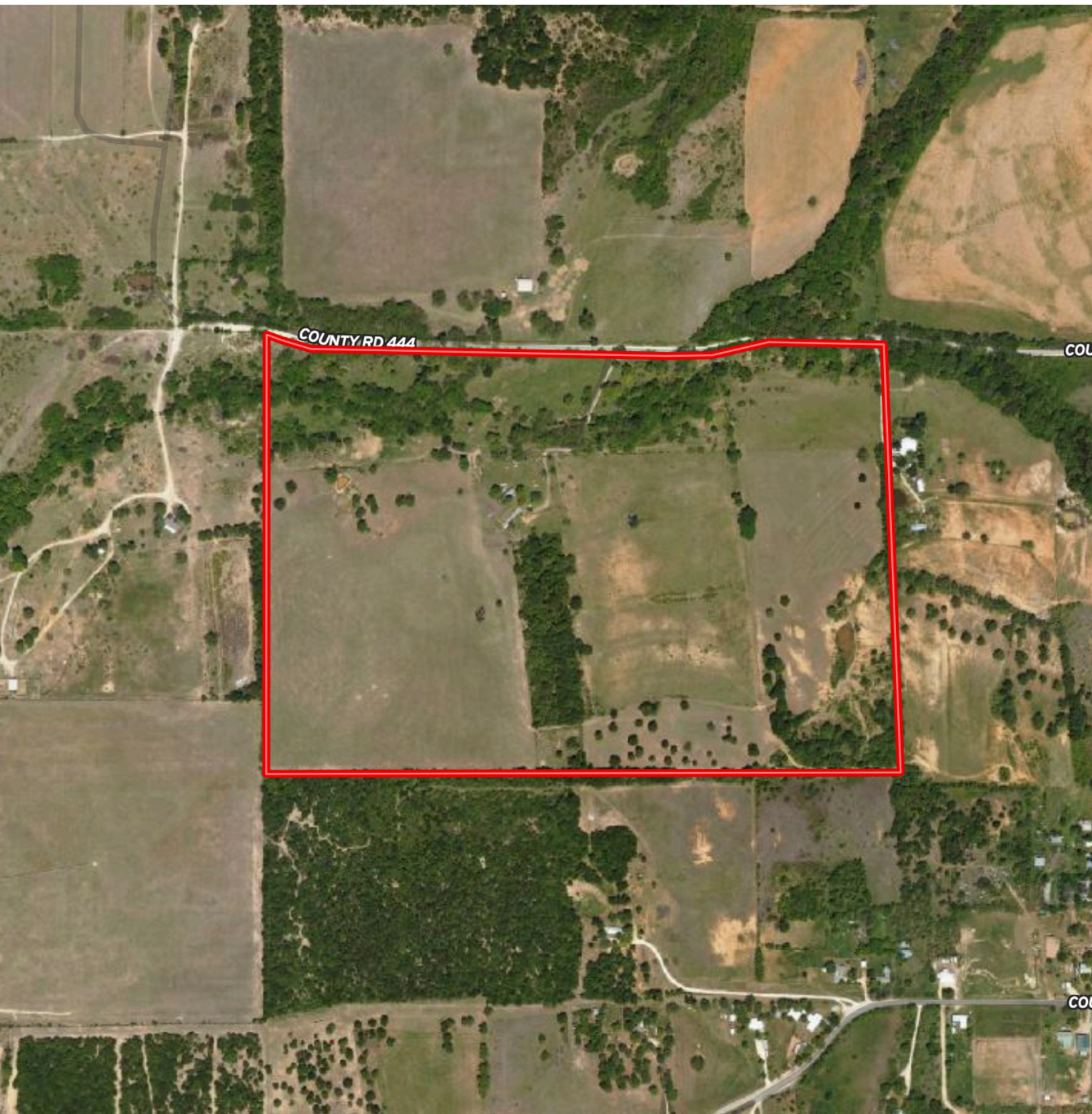
PROPERTY PHOTOS



STEPHEN REICH – 817.597.8884
TAMMY ROKUS – 817.694.8019



AERIAL MAP

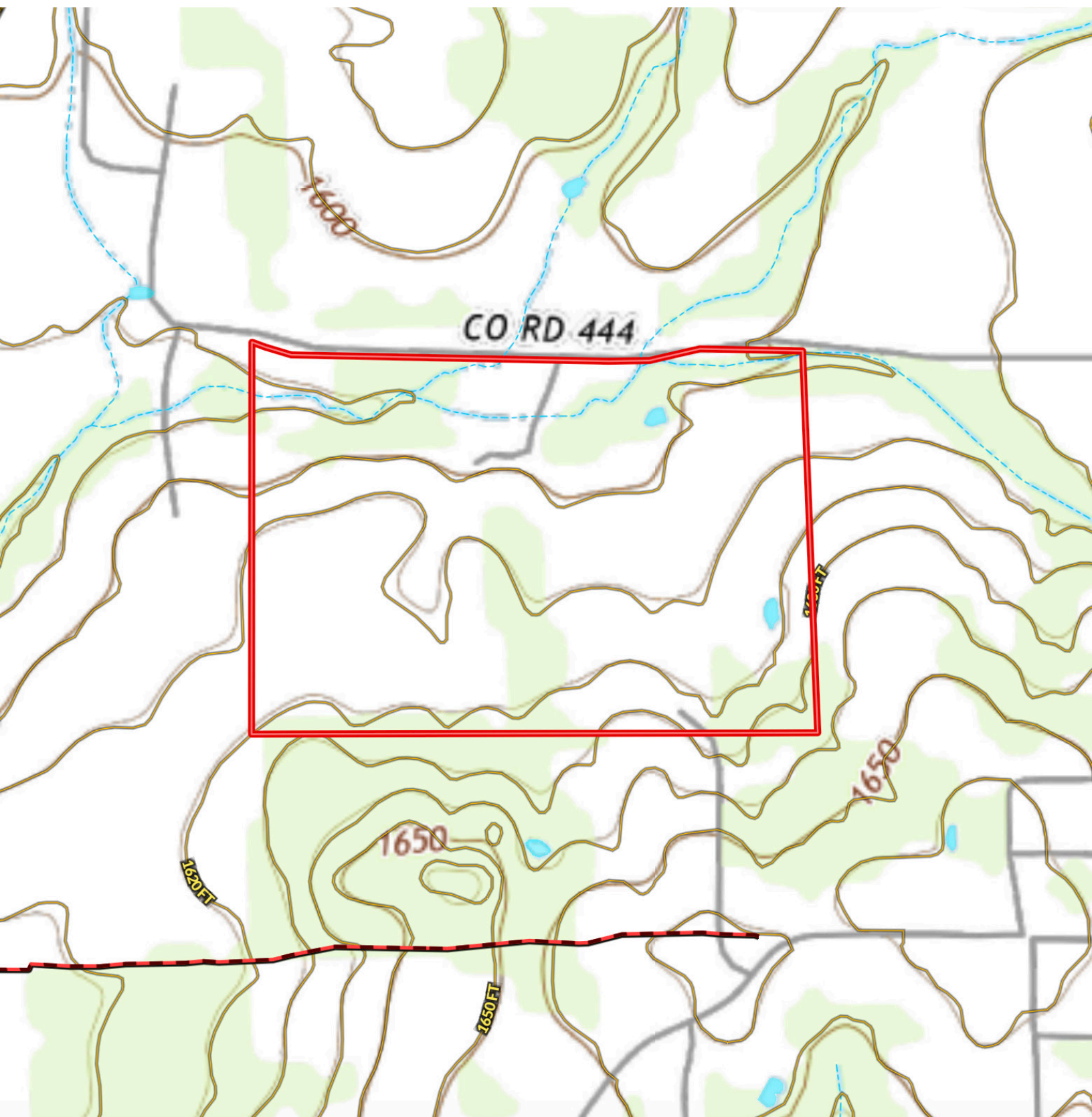


STEPHEN REICH – 817.597.8884
TAMMY ROKUS – 817.694.8019



WilliamsTrew[☆]
A DIVISION OF EBBY HALLIDAY REAL ESTATE, INC.

CONTOUR LINES & FLOODPLAIN



STEPHEN REICH – 817.597.8884
TAMMY ROKUS – 817.694.8019

