

# Paluxy Ridgeview Ranch

---

345± acres | \$3,087,750 | Granbury, Texas | Hood County



*Chas. S. Middleton*

— AND SON LLC —

FARM - RANCH SALES AND APPRAISALS

*Est. 1920*



# Paluxy Ridgeview Ranch

---

We are honored to have been chosen as the exclusive listing broker on the Paluxy Ridgeview Ranch located in Central Hood County, Texas. The ranch is made up of 345± beautiful acres overlooking the Paluxy River valley. Huge panoramic views can be seen as you look toward the southern border of the property. A very large mesa runs through the middle of the ranch, potentially creating many magnificent building sites. Scattered ponds can be seen in all directions from the high point on the ridge. Clear, native pastures surround the mesa providing opportunities to view wild game living on the ranch.

The ranch is proven to contain great habitat for cattle, horses, sheep, and goats. Owned by the same family since 1947, attention and care of the property have always been a priority for the different generations running the ranch. Brush control and grass management have been practiced since the early 1970's.

---









## Location

---

The Paluxy Ridgeview Ranch is located approximately 6 miles from Tolar, Texas, and another 8 miles from Granbury, Texas. The DFW metroplex and DFW International Airport are a quick two-hour drive from the ranch. Highway 51 provides a direct route from Granbury to the ranch which is located on Coleman Ranch Road.

---





## Improvements

---

There are no structural improvements on the ranch. The perimeter and cross fencing are in good condition. Ground water is normally available with many water wells in the area. Electricity is also available nearby.

---

























## Hunting • Fishing

---

Hunting in the area is considered to be very good. Whitetail deer, turkey, hogs, and dove are found on the property. Quail have also been seen in the past when bird populations were good in Texas. Large catfish can be found in the upper pond with other types of fish in the other ponds across the ranch.

---





## Price

---

\$3,087,750 • \$8,950 per acre

## Remarks

---

The Paluxy Ridgeview Ranch is a beautiful property located in the area where the hill country starts. The ranch is ready for your dream home or weekend get-a-way with numerous magnificent views. This easy to manage property is a must see!

---

Call (806) 763.5331 for more information or to schedule a tour.







**PALUXY RIDGEVIEW RANCH**



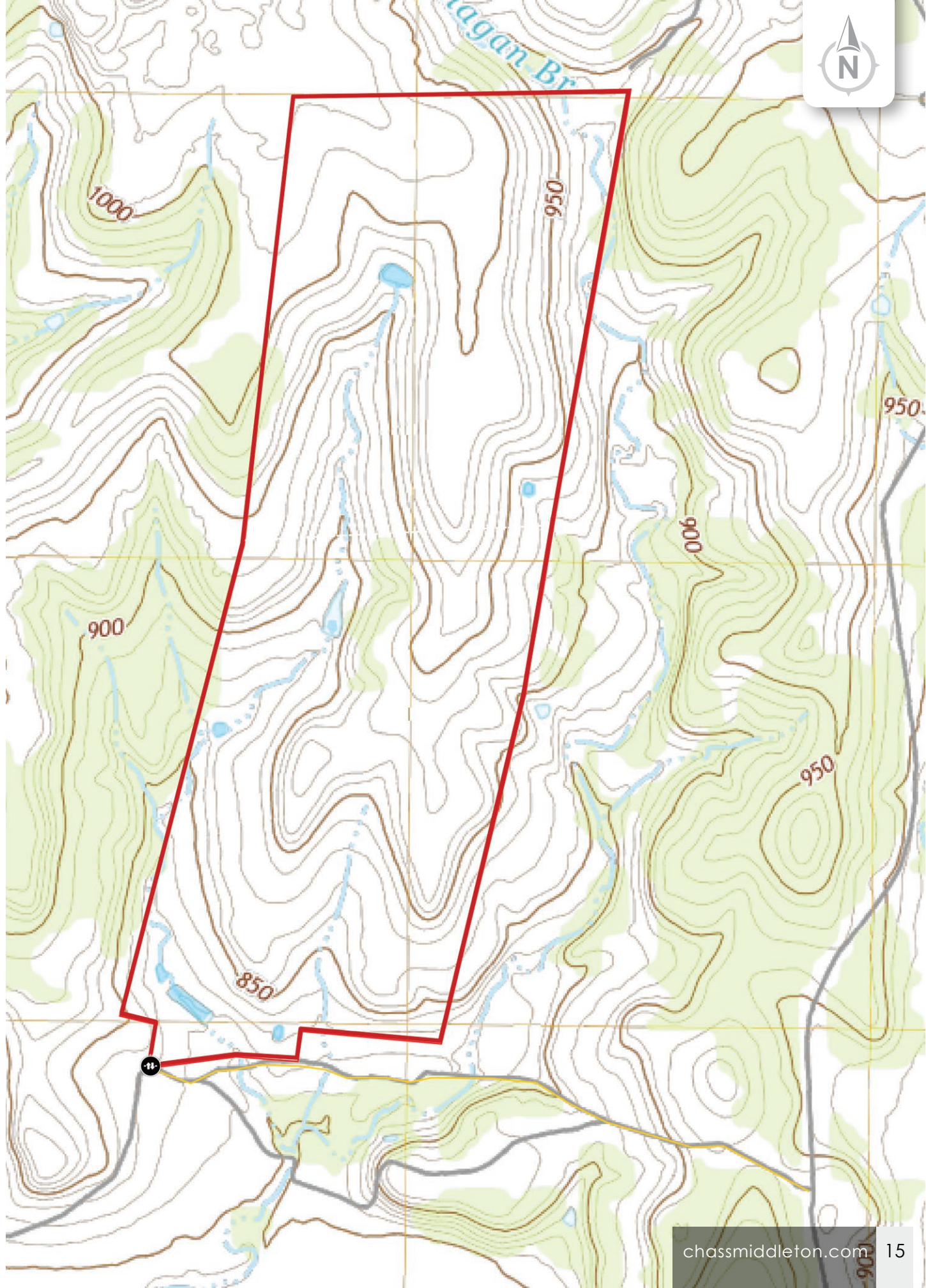




32.3062, -97.9278

COLEMAN RANCH RD







*Chas. S. Middleton*

— AND SON LLC —

FARM - RANCH SALES AND APPRAISALS

*Est. 1920*

Sam Middleton, ARA

Owner • Broker  
Certified Appraiser

---

(817) 304.0504  
sam@csmansion.com



(806) 763.5331

chasmiddleton.com



YouTube

