

# 531 Laughlin Road Cleveland, MS \$695,000

Welcome to your beautiful new home on 3± acres in Bolivar County, MS! This charming five-bedroom, three-bathroom residence features over 3,000± square feet. Inside, the home exudes elegance with a seamless blend of tile and engineered hardwood flooring, complemented by custom crown molding, baseboards, and shutters. The heart of the house, the kitchen, showcases quartz countertops and sleek stainless-steel appliances, creating a functional and stylish space. Each of the three bathrooms features luxurious marble countertops. In the sunroom, you will find large windows with custom shades inviting natural light while maintaining privacy. Step outside to discover a meticulously curated exterior featuring a stunning front door crafted by MS Ironworks, and practical amenities such as a mosquito system, storm shelter, and security cameras. Entertaining is effortless with the outdoor entertaining area, perfect for hosting gatherings against the backdrop of lush greenery. Additionally, two shops provide plenty of storage space for tools and equipment. A generator can power the home during a power outage, ensuring comfort and convenience regardless of external circumstances. Experience the allure of this exceptional home firsthand - call Tracey Bell to schedule your private showing!



[Drone Footage](#) | [Video Link](#)

**TRACEY  
BELL**

MANAGING BROKER

Office: 662.441.2500

Cell: 662.719.4720

[Tracey@TomSmithLand.com](mailto:Tracey@TomSmithLand.com)



Expect More. Get More.

**A Real Estate Expert You Can Trust**

[TomSmithLandandHomes.com](http://TomSmithLandandHomes.com)

Information is believed to be accurate but not guaranteed.







- Gas Fireplace
- Tankless Hot Water Heater
- Quartz Countertops in the Kitchen
- Generator

- Custom Front Door
- Custom Crown Molding & Baseboards
- Security Cameras & Ring Doorbell

**TRACEY  
BELL**

MANAGING BROKER

Office: 662.441.2500

Cell: 662.719.4720

Tracey@TomSmithLand.com



**A Real Estate Expert You Can Trust**

TomSmithLandandHomes.com

Information is believed to be accurate but not guaranteed.







- Wooden Privacy Fence
- New Outdoor Entertainment Area with Stamped Concrete
- 40'X60' Shop
- 40'x40' Shop with HVAC, a Half Bathroom, and Numerous Built-ins
- Storm Shelter
- Mosquito System



**TRACEY  
BELL**  
MANAGING BROKER  
Office: 662.441.2500  
Cell: 662.719.4720  
Tracey@TomSmithLand.com



**A Real Estate Expert You Can Trust**  
TomSmithLandandHomes.com

Information is believed to be accurate but not guaranteed.







\*Boundary Lines are believed to be accurate but not guaranteed.

**TRACEY  
BELL**

MANAGING BROKER

Office: 662.441.2500

Cell: 662.719.4720

[Tracey@TomSmithLand.com](mailto:Tracey@TomSmithLand.com)



**A Real Estate Expert You Can Trust**  
[TomSmithLandandHomes.com](http://TomSmithLandandHomes.com)

Information is believed to be accurate but not guaranteed.







**TRACEY  
BELL**

MANAGING BROKER

Office: 662.441.2500

Cell: 662.719.4720

Tracey@TomSmithLand.com

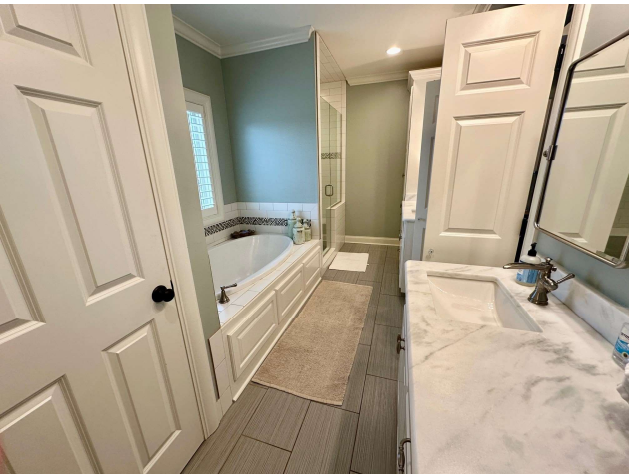


Expect More. Get More.

**A Real Estate Expert You Can Trust**  
TomSmithLandandHomes.com

2011-2023  
RFS





- Marble Countertops
- Stand-Alone Shower with Bench
- Make-Up Area
- Garden Bathtub

**TRACEY  
BELL**

MANAGING BROKER

Office: 662.441.2500

Cell: 662.719.4720

Tracey@TomSmithLand.com



**A Real Estate Expert You Can Trust**

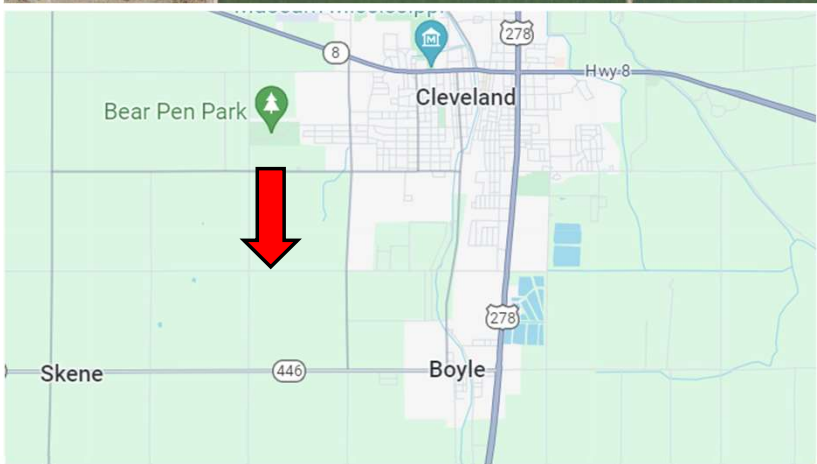
TomSmithLandandHomes.com

Information is believed to be accurate but not guaranteed.





# MAPS | [Click for Interactive Map](#)



**Address: 531 Laughlin Road  
Cleveland, MS 38732**

Directions from Hwy 8 & Hwy 61 in Cleveland, MS: Travel south on Hwy 61 for 2 miles. Turn right on Laughlin Road. In 2.25 miles, the home will be on the left. [Click for Google Maps.](#)



**TRACEY  
BELL**

MANAGING BROKER

Office: 662.441.2500

Cell: 662.719.4720

[Tracey@TomSmithLand.com](mailto:Tracey@TomSmithLand.com)



Expect More. Get More.

**A Real Estate Expert You Can Trust**

[TomSmithLandandHomes.com](http://TomSmithLandandHomes.com)

Information is believed to be accurate but not guaranteed.

