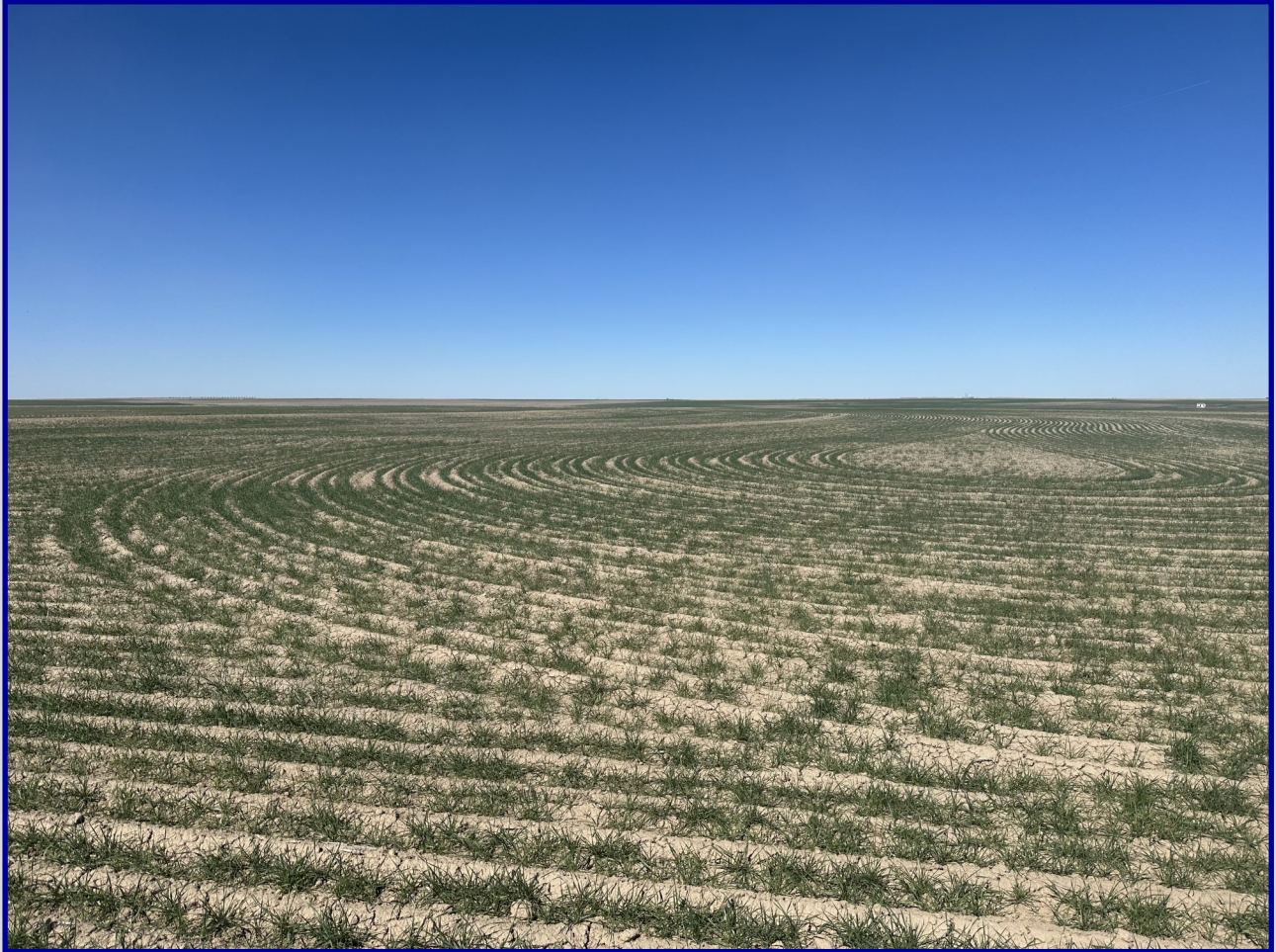


The Northwest Quarter 16-21-38

Kearny County, Kansas



HUTCHESON

Real Estate & Auction

(620) 355-7991

www.hutchreal.com



The Northwest Quarter 16-21-38

Kearny County, Kansas

Legal Description

The Northwest Quarter (NW/4) of Section Sixteen (16), Township Twenty-one (21) South, Range Thirty-eight (38) West of the Sixth P.M., Kearny County, Kansas.

Description of the land

This tract consists of 160 total acres of which approximately 145 acres are in dry crop and the remaining 15 acres are in a draw.

Possession

The Buyer shall receive the Sellers 1/3 of this years wheat crop and full possession following.

Minerals

This tract is selling with the owners share of the minerals.

Real Estate Taxes

2023 Real Estate Taxes \$380.70

Driving Directions

19 miles North of Lakin to Road 340, 12 miles West (Sign Posted), then a 1/2 mile North (Sign Posted) on field road.

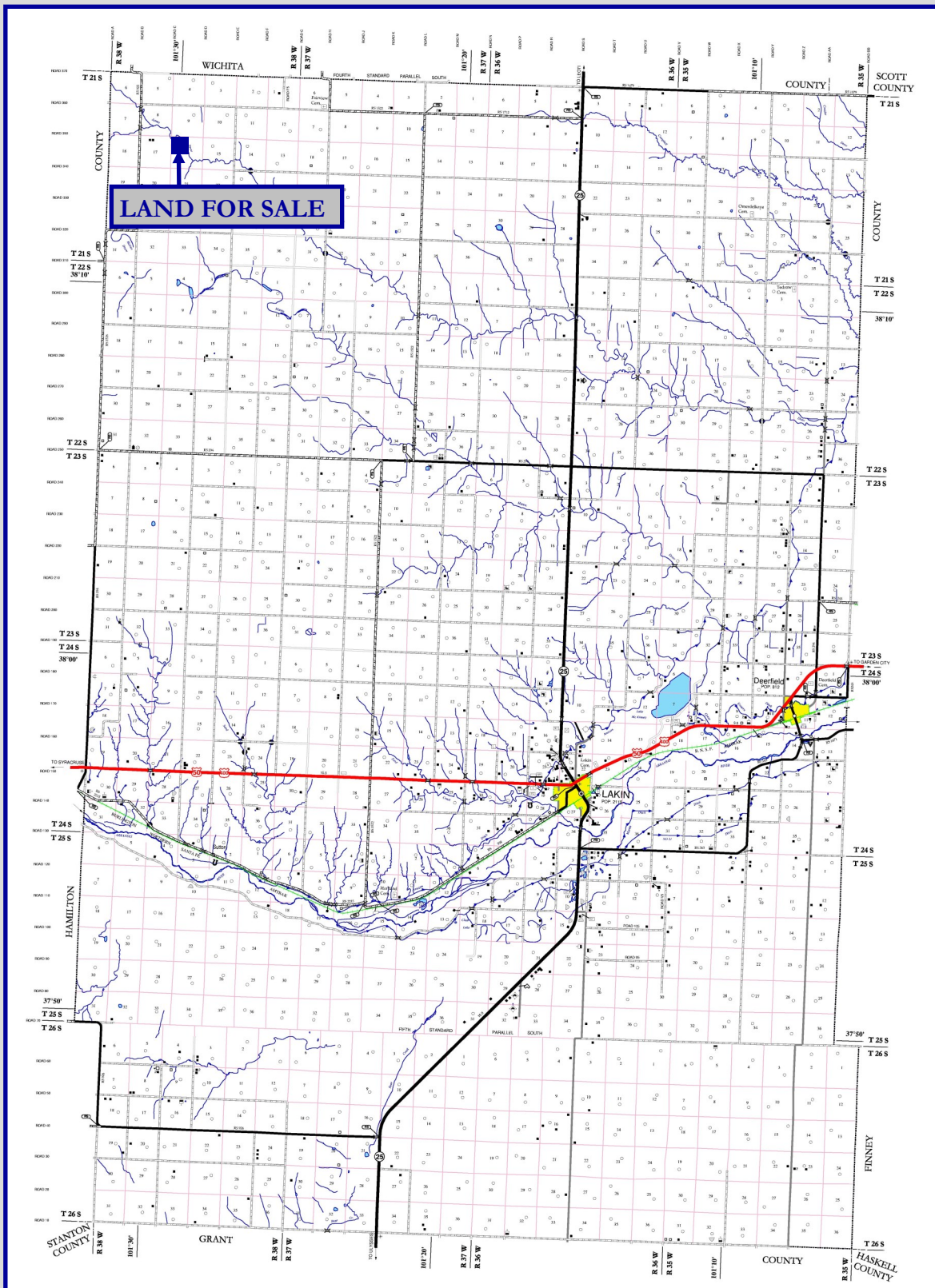
Asking Price

\$240,000/ \$1,500 Per Acre



The Northwest Quarter 16-21-38

Kearny County, Kansas



The Northwest Quarter 16-21-38

Kearny County, Kansas

Aerial Map



Maps Provided By:
surety
CUSTOMIZED ONLINE MAPPING
© AgriData, Inc. 2023 www.AgriDataInc.com

Boundary Center: 38° 13' 51.29, -101° 30' 5.02

16-21S-38W
Kearny County
Kansas

0ft 835ft 1670ft



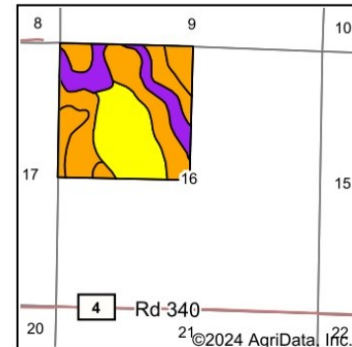
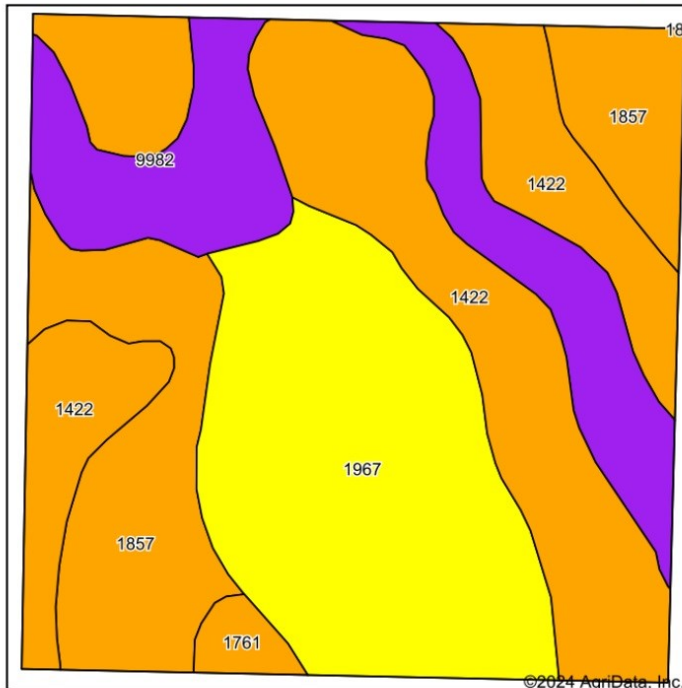
3/15/2024

Field borders provided by Farm Service Agency as of 5/21/2008.

The Northwest Quarter 16-21-38

Kearny County, Kansas

Soils Map



State: **Kansas**
 County: **Kearny**
 Location: **16-21S-38W**
 Township: **West Hibbard**



Maps Provided By:
surety
 CUSTOMIZED ONLINE MAPPING
 © AgriData, Inc. 2023 www.AgriDataInc.com



Soils data provided by USDA and NRCS.

Area Symbol: KS093, Soil Area Version: 20														
Code	Soil Description	Acres	Percent of field	Non-Irr Class Legend	Non-Irr Class *c	Irr Class *c	Alfalfa hay Irrigated Tons	Corn Irrigated Bu	Grain sorghum Bu	Grain sorghum Irrigated Bu	Winter wheat Bu	Winter wheat Irrigated Bu	*n NCCPI Soybeans	
1422	Goshen silt loam, rarely flooded	57.69	34.8%		IIIc	Iw	5	118	34	98	34	69	55	
1967	Buffalo Park-Ulysses silt loams, 1 to 3 percent slopes, eroded	47.16	28.4%		IVe	Ile							53	
1857	Ulysses silt loam, 1 to 3 percent slopes	30.10	18.1%		IIIe	Ile	5		23	99	20	45	64	
9982	Fluvents, frequently flooded	28.65	17.3%		VIw									
1761	Richfield silt loam, 0 to 1 percent slopes	2.37	1.4%		IIIc	I	6	167	33	121	26	47	64	
Weighted Average					3.80	*-	2.7	43.4	16.5	53.7	15.8	32.8	*n 46.7	

*n: The aggregation method is "Weighted Average using all components"

*c: Using Capabilities Class Dominant Condition Aggregation Method

*-: Irr Class weighted average cannot be calculated on the current soils data due to missing data.

Soils data provided by USDA and NRCS.