

Tennessee

1.6+/- Acres in Hamilton County

\$54,900



**SMALLTOWN**  
HUNTING PROPERTIES  
& REAL ESTATE™

769.888.2522

[www.smalltownproperties.com](http://www.smalltownproperties.com)

# Hamilton 1.6

## Property Profile

### Location:

- Hamilton, County, TN
- 630 River Landing Dr, Soddy-Daisy TN 37379
- 20 Miles North of Chattanooga

### Property Use:

- Residence
- Investment

### Coordinates:

- 35.27862 N, 85.14694 W

### Property Information:

- 1.6± Acres
- Partially Cleared Lot
- Ideal Property for Family Homestead
- All Utilities Available at Road

### Tax Information:

- 049I A 040
- Tax Amount for 2022-\$220.47



**SMALLTOWN**  
HUNTING PROPERTIES  
& REAL ESTATE<sup>SM</sup>

**BRYSON DALTON**

LAND SPECIALIST

C: 423-413-6202

O: 769-888-2522

[bryson@smalltownproperties.com](mailto:bryson@smalltownproperties.com)

P.O. Box 9 - Birchwood, TN 37308

[smalltownproperties.com](http://smalltownproperties.com)



Information is believed to be accurate but not guaranteed.



If you are looking for a place to build your dream home, consider the Hamilton 1.6 conveniently located 3/4 miles from Highway 27 in Soddy Daisy, TN. This 1.6+/- acre Hamilton County lot is situated in the beautiful North River Hills subdivision and offers views of a seasonal lake.



**SMALLTOWN**  
HUNTING PROPERTIES  
& REAL ESTATE<sup>SM</sup>

**BRYSON DALTON**

LAND SPECIALIST

C: 423-413-6202

O: 769-888-2522

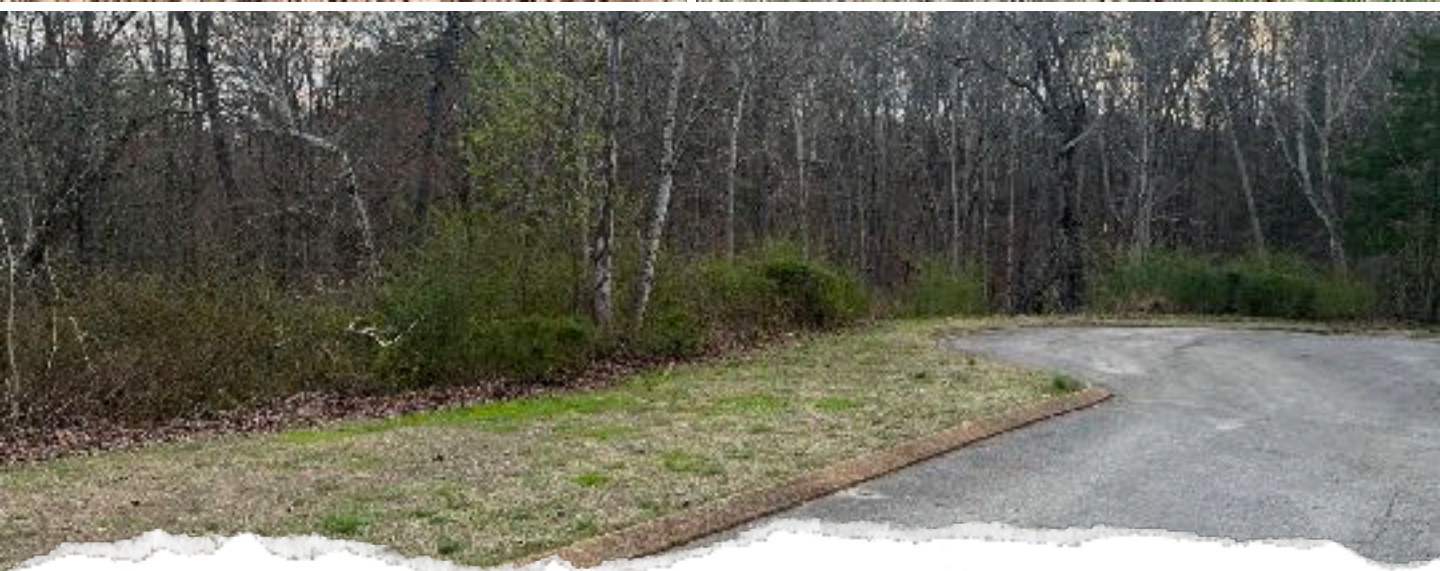
[bryson@smalltownproperties.com](mailto:bryson@smalltownproperties.com)

P.O. Box 9 - Birchwood, TN 37308

[smalltownproperties.com](http://smalltownproperties.com)

Information is believed to be accurate but not guaranteed.





**SMALLTOWN**  
HUNTING PROPERTIES  
& REAL ESTATE<sup>SM</sup>

**BRYSON DALTON**

LAND SPECIALIST

C: 423-413-6202

O: 769-888-2522

[bryson@smalltownproperties.com](mailto:bryson@smalltownproperties.com)

P.O. Box 9 - Birchwood, TN 37308

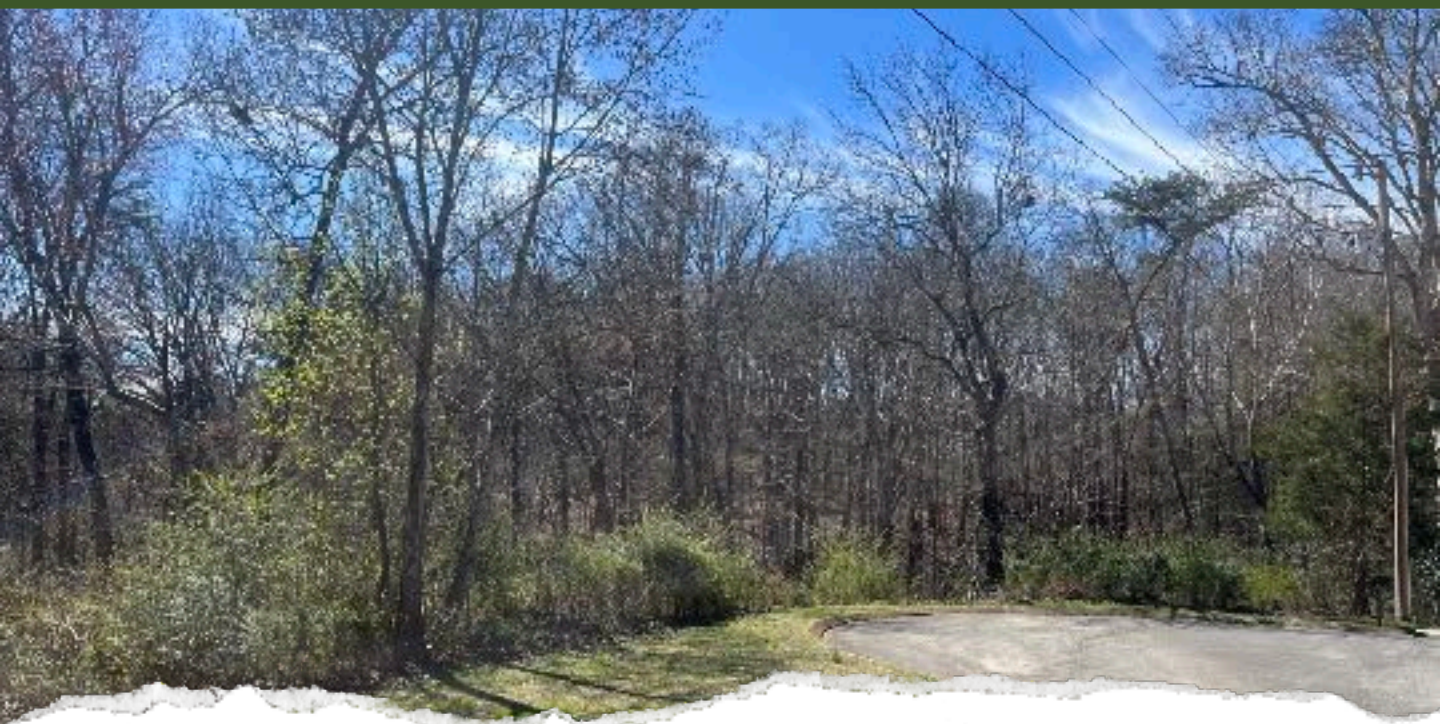
[smalltownproperties.com](http://smalltownproperties.com)

Information is believed to be accurate but not guaranteed.





The lot is a corner lot that also backs up to a cul-de-sac offering an ample amount of road frontage. Its proximity to Highway 27, Holly Circle boat ramp, Soddy school zones, and the Soddy lake ball fields make this lot a fantastic choice for building your dream home. Utilities are easily accessible as well providing ease in the building process. A survey and percolation test are available upon request. For more information about the Hamilton 1.6, contact Bryson Dalton today.



**SMALLTOWN**  
HUNTING PROPERTIES  
& REAL ESTATE<sup>SM</sup>

**BRYSON DALTON**

LAND SPECIALIST

C: 423-413-6202

O: 769-888-2522

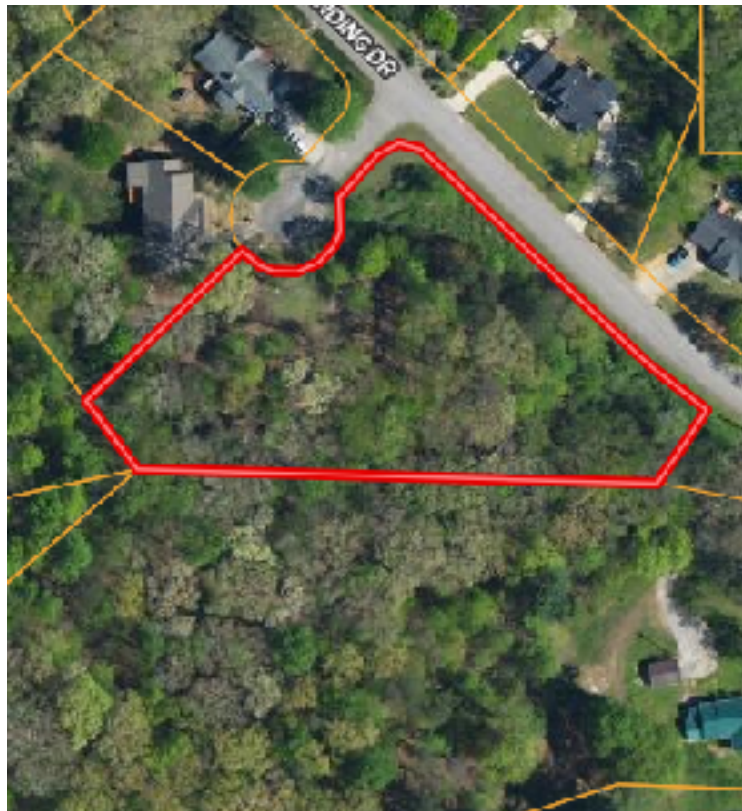
[bryson@smalltownproperties.com](mailto:bryson@smalltownproperties.com)

P.O. Box 9 - Birchwood, TN 37308

[smalltownproperties.com](http://smalltownproperties.com)

Information is believed to be accurate but not guaranteed.



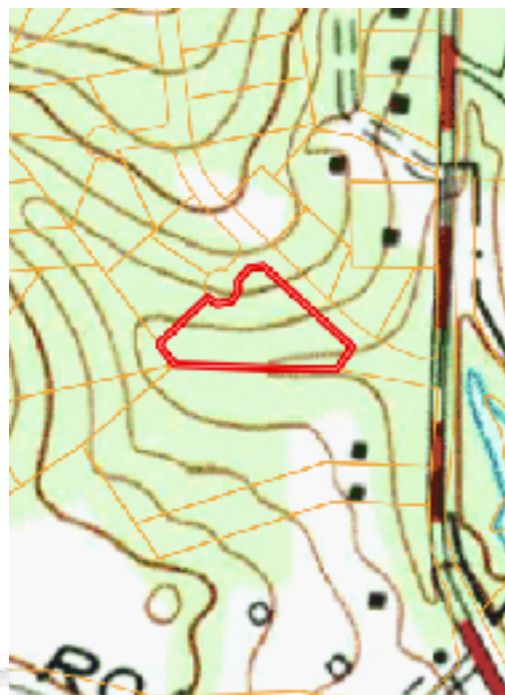


### Directions

- Traveling North on Hwy 27
- Exit right onto Tsati Terrace
- Turn Right
- Travel .55 Miles West on Tsati Terrace
- Turn Left onto Hixson Pike
- Travel .2 Miles and Take First Left onto River Landing Dr
- Property is the First Lot on the Left at the corner of Windy Ridge Rd

[Land id Link](#)

[Google Map Link](#)



**SMALLTOWN**  
HUNTING PROPERTIES  
& REAL ESTATE<sup>SM</sup>

**BRYSON DALTON**

LAND SPECIALIST

C: 423-413-6202

O: 769-888-2522

[bryson@smalltownproperties.com](mailto:bryson@smalltownproperties.com)

P.O. Box 9 - Birchwood, TN 37308

[smalltownproperties.com](http://smalltownproperties.com)

Information is believed to be accurate but not guaranteed.