



MONTGOMERY COUNTY, MO

81.8 Acres ● \$777,100

Don't miss this Montgomery County farm consisting of 70+/- acres of highly productive, tillable ground. Slopes range from 0-2% & 3-7%. This tract is mostly open and has Sandy Creek to the West and branches of timber throughout, providing an ideal home for wildlife. Gravel road frontage.

- Highly productive, tillable ground
- \$200 per acres cash rent offered for 2 year lease
- Great hunting opportunity

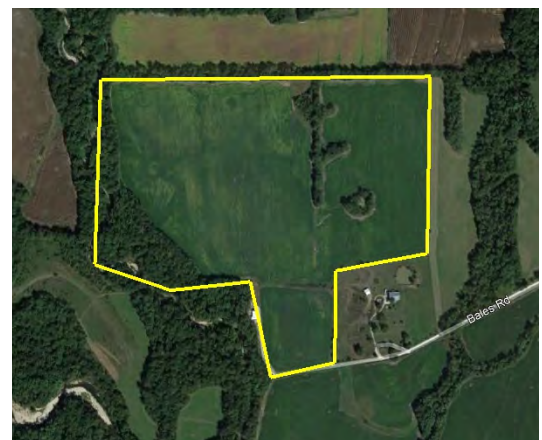


ASHLEY NICHOLS

CELL: 314-713-1286

OFFICE: (636) 528-9500

ASHLEY@AGRILANDCO.COM



FIND YOUR DREAM FARM TODAY

ASHLEY NICHOLS

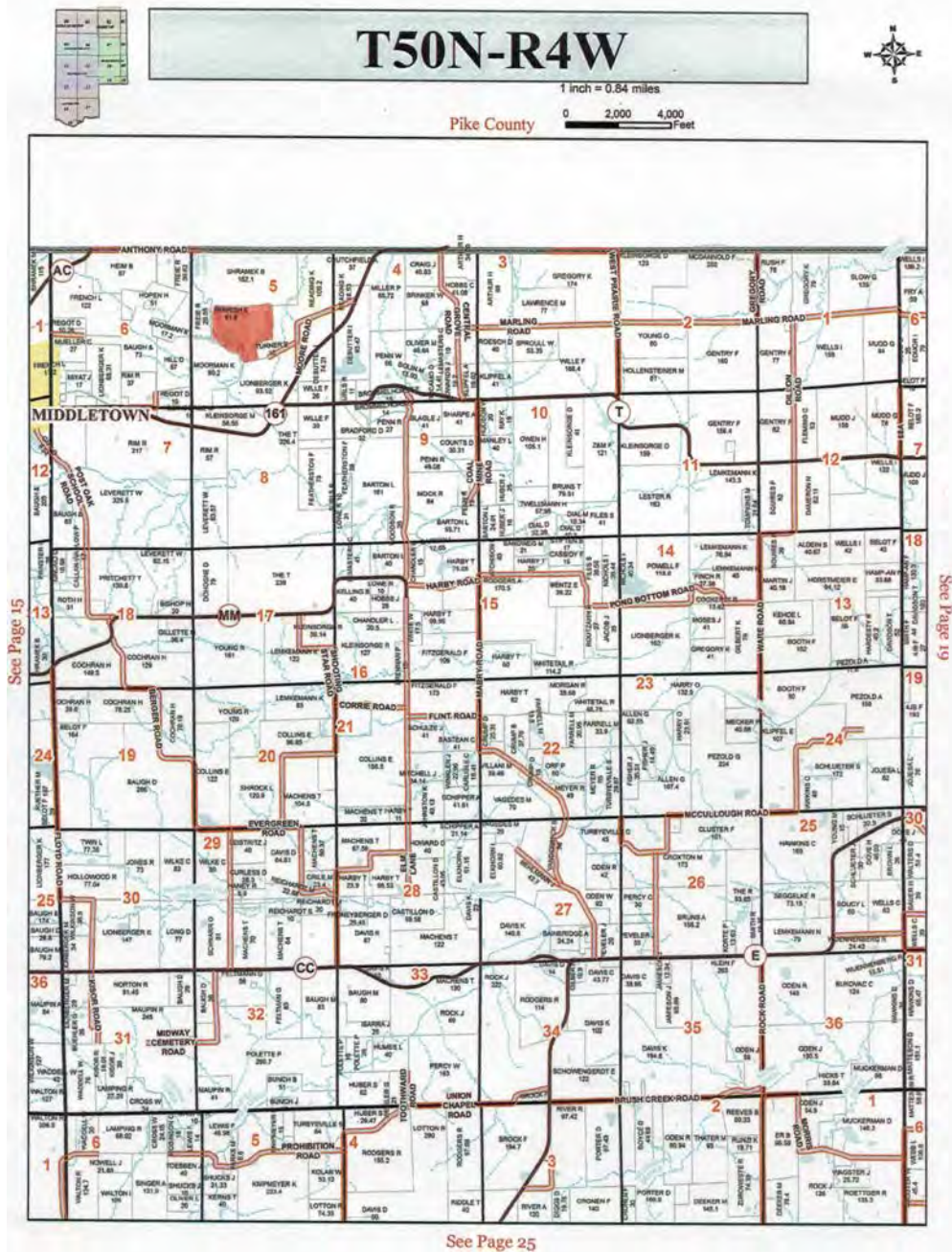
CELL: 314-713-1286

OFFICE: (636) 528-9500

ASHLEY@AGRILANDCO.COM



Agri Land Co.
YOUR LOCAL FARM CONNECTION



**DRIVING
DIRECTIONS**

From Middletown, Hwy. 161 north approx. 2 miles to left on Moore Rd. Approx. 1/4 miles to left on Bales Rd, approx. 1/4 mile to far on right.