

The North Half 32-23-38

Kearny County, Kansas



HUTCHESON

Real Estate & Auction

(620) 355-7991

www.hutchreal.com



The North Half 32-23-38

Kearny County, Kansas

Legal Description

The North Half (N/2) of Section Thirty-two (32), Township Twenty-three (23) South, Range Thirty-eight (38) West of the Sixth P.M., Kearny County, Kansas.

Description of the land

This tract consists of 320 total acres of which 316.77 acres are enrolled into the CRP program. The CRP as an annual payment of \$13,966 or \$41.18 per acre and expires 9-30-2025. The 2024 CRP Payment shall be prorated on the day of closing.

Minerals

This tract is selling with the surface rights only.

Location

This tract is located 12 miles West of Lakin to County Road D, 5 miles North to County Road 200 then 1 mile West to the Northeast corner of the property (signs are posted).

Real Estate Taxes

2023 Real Estate Taxes \$795.52

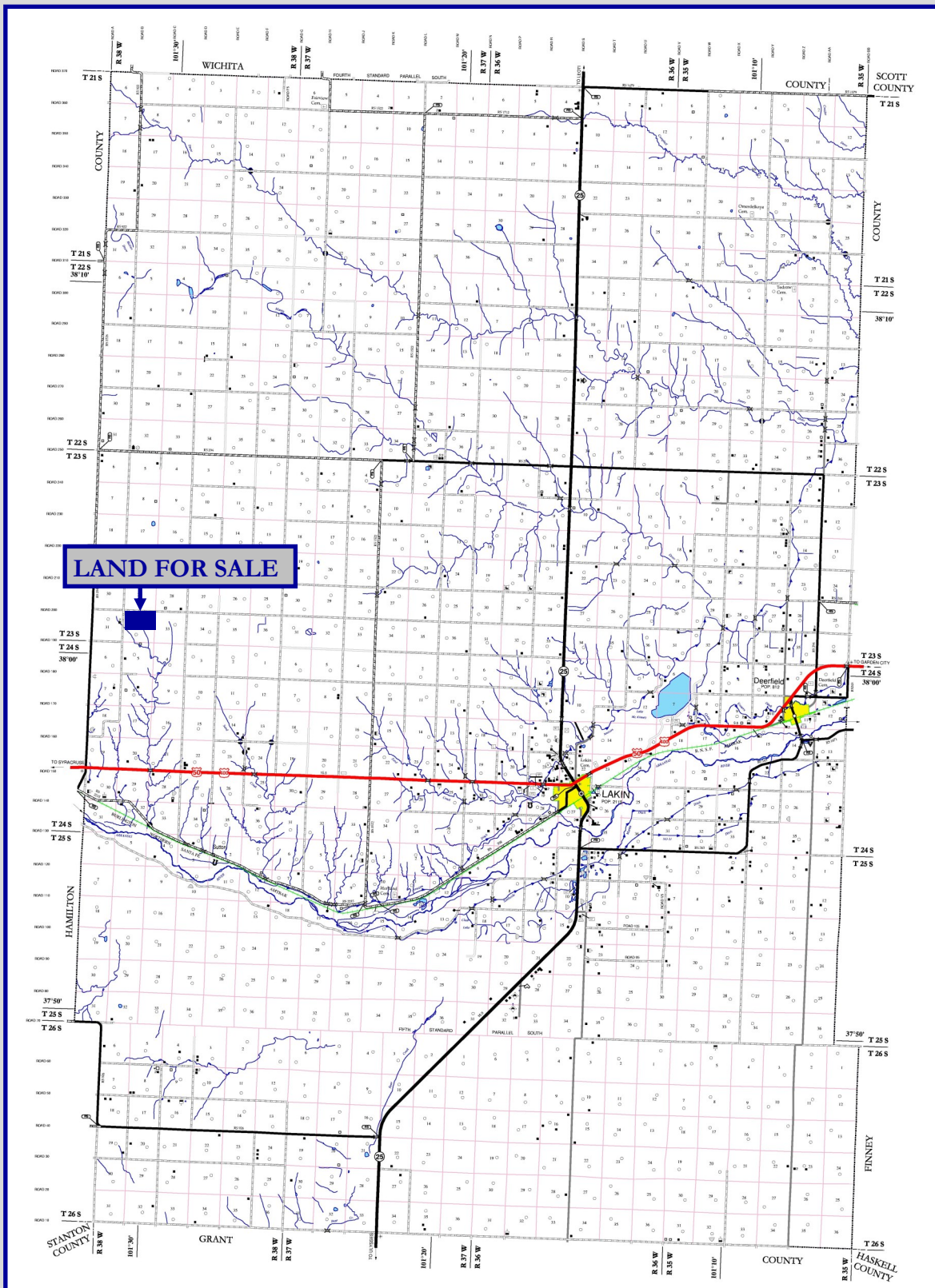
Asking Price

\$576,000/ \$1,800 Per Acre



The North Half 32-23-38

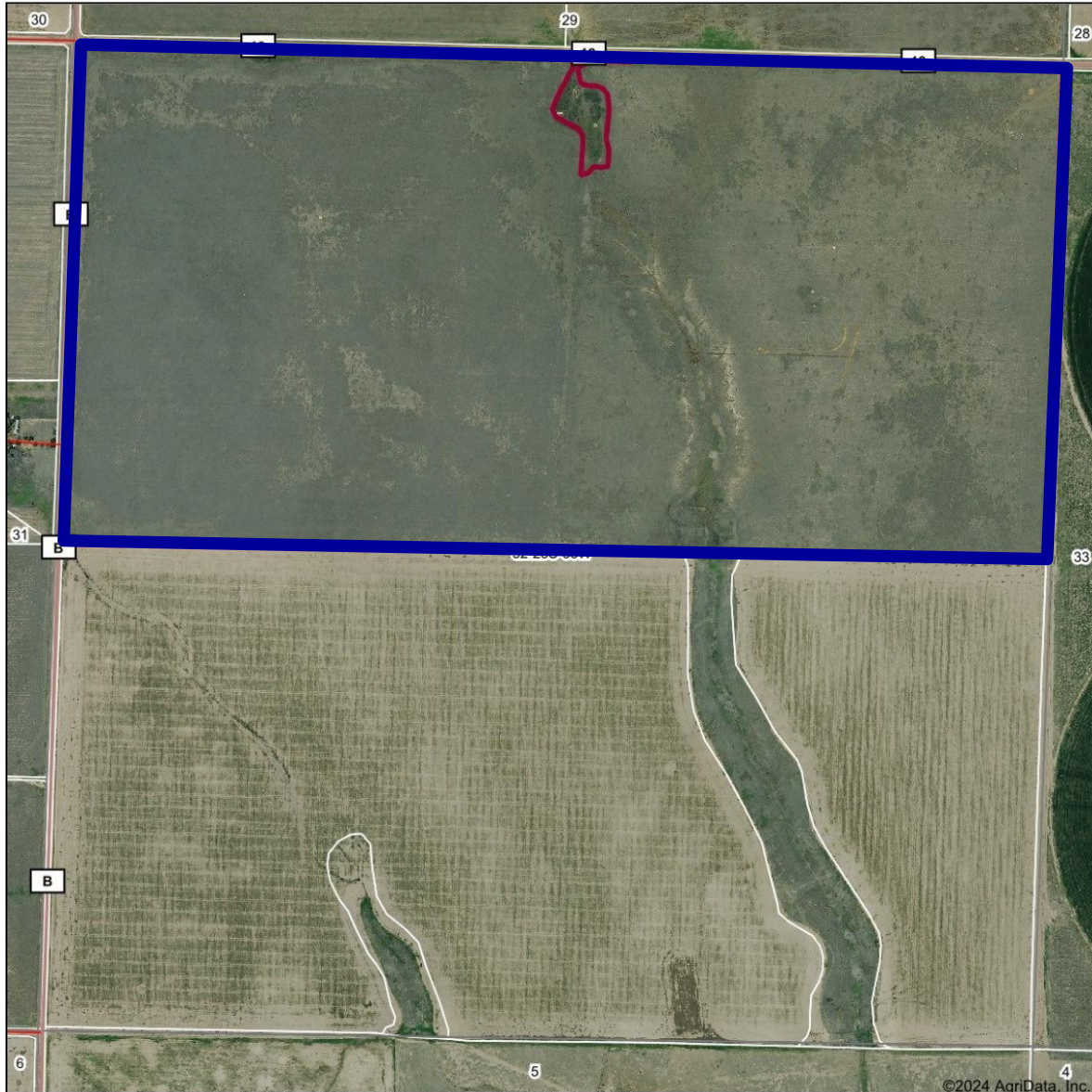
Kearny County, Kansas



The North Half 32-23-38

Kearny County, Kansas

Aerial Map



Boundary Center: 38° 0' 47.11, -101° 30' 50.78

32-23S-38W
Kearny County
Kansas

0ft 833ft 1667ft



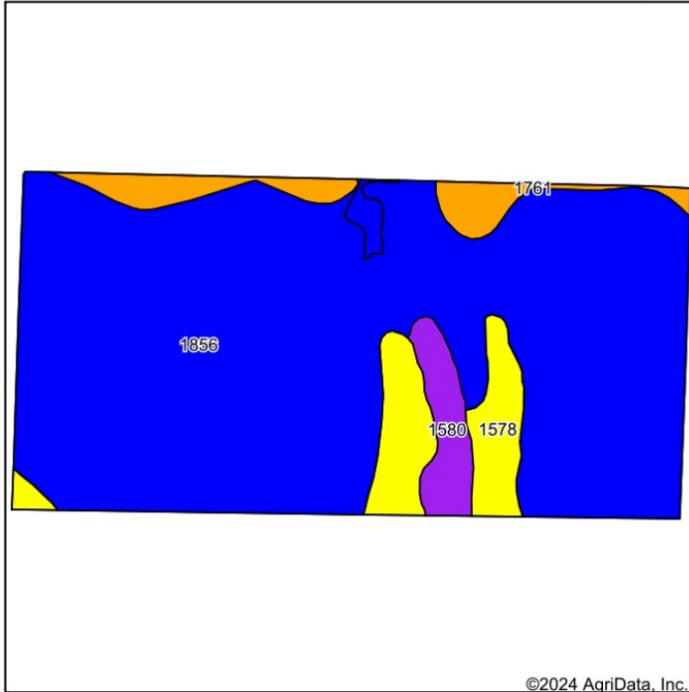
4/1/2024

Field borders provided by Farm Service Agency as of 5/21/2008

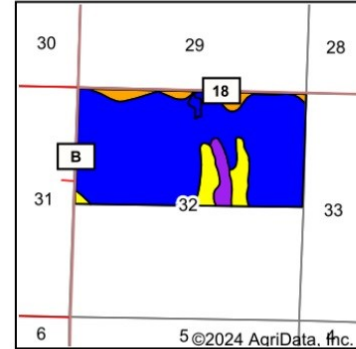
The North Half 32-23-38

Kearny County, Kansas

Soils Map



Soils data provided by USDA and NRCS.



State: **Kansas**
County: **Kearny**
Location: **32-23S-38W**



Maps Provided By:
surety
CUSTOMIZED ONLINE MAPPING
© AgriData, Inc. 2023 www.AgriDataInc.com



Area Symbol: KS093, Soil Area Version: 20

Code	Soil Description	Acres	Percent of field	Non-Irr Class Legend	Non-Irr Class *c	Irr Class *c	Alfalfa hay Irrigated Tons	Corn Irrigated Bu	Grain sorghum Bu	Grain sorghum Irrigated Bu	Winter wheat Bu	Winter wheat Irrigated Bu	*n NCCPI Soybeans
1856	Ulysses silt loam, 0 to 1 percent slopes	267.88	83.9%		IIc	Iw			26		22		63
1578	Colby silt loam, 1 to 3 percent slopes	25.17	7.9%		IVc	IIIe							54
1761	Richfield silt loam, 0 to 1 percent slopes	15.18	4.8%		IIIc	I	6	167	33	121	26	47	64
1580	Colby silt loam, 6 to 15 percent slopes	10.89	3.4%		VIe								48
Weighted Average					2.34	*-	0.3	7.9	23.4	5.8	19.7	2.2	*n 61.8

*n: The aggregation method is "Weighted Average using all components"

*c: Using Capabilities Class Dominant Condition Aggregation Method

*- Irr Class weighted average cannot be calculated on the current soils data due to missing data.

Soils data provided by USDA and NRCS.

The North Half 32-23-38

Kearny County, Kansas

CRP-1 (07-06-20)		U.S. DEPARTMENT OF AGRICULTURE Commodity Credit Corporation		1. ST. & CO. CODE & ADMIN. LOCATION 20 093		2. SIGN-UP NUMBER 39	
CONSERVATION RESERVE PROGRAM CONTRACT				3. CONTRACT NUMBER 979C		4. ACRES FOR ENROLLMENT 316.77	
5A. COUNTY FSA OFFICE ADDRESS (Include Zip Code) KEARNY COUNTY FARM SERVICE AGENCY 212 WEST SANTA FE TRL BLVD LAKIN, KS67860-9447				6. TRACT NUMBER 1197		7. CONTRACT PERIOD FROM: (MM-DD-YYYY) 10-01-2010 TO: (MM-DD-YYYY) 09-30-2025	
5B. COUNTY FSA OFFICE PHONE NUMBER (Include Area Code): (620) 355-7911 x16				8. SIGNUP TYPE: General			

THIS CONTRACT is entered into between the Commodity Credit Corporation (referred to as "CCC") and the undersigned owners, operators, or tenants (referred to as "the Participant"). The Participant agrees to place the designated acreage into the Conservation Reserve Program ("CRP") or other use set by CCC for the stipulated contract period from the date the Contract is executed by the CCC. The Participant also agrees to implement on such designated acreage the Conservation Plan developed for such acreage and approved by the CCC and the Participant. Additionally, the Participant and CCC agree to comply with the terms and conditions contained in this Contract, including the Appendix to this Contract, entitled Appendix to CRP-1, Conservation Reserve Program Contract (referred to as "Appendix"). By signing below, the Participant acknowledges receipt of a copy of the Appendix/Appendices for the applicable contract period. The terms and conditions of this contract are contained in this Form CRP-1 and in the CRP-1 Appendix and any addendum thereto. BY SIGNING THIS CONTRACT PARTICIPANTS ACKNOWLEDGE RECEIPT OF THE FOLLOWING FORMS: CRP-1; CRP-1 Appendix and any addendum thereto; and, CRP-2, CRP-2C, CRP-2G, or CRP-2C30, as applicable.

9A. Rental Rate Per Acre \$ 41.18		10. Identification of CRP Land (See Page 2 for additional space)				
9B. Annual Contract Payment \$ 13,046.00	A. Tract No.	B. Field No.	C. Practice No.	D. Acres	E. Total Estimated Cost-Share	
9C. First Year Payment \$	1197	1	CP25	316.77	\$ 13,966.00	
(Item 9C is applicable only when the first year payment is prorated.)						

11. PARTICIPANTS (If more than three individuals are signing, see Page 3.)

3831 et seq), the Agricultural Improvement Act of 2018 (Pub. L. 115-334) and 7 CFR Part 1410. The information will be used to determine eligibility to participate in and receive benefits under the Conservation Reserve Program. The information collected on this form may be disclosed to other Federal, State, Local government agencies, Tribal agencies, and nongovernmental entities that have been authorized access to the information by statute or regulation and/or as described in applicable Routine Uses identified in the System of Records Notice for USDA/FSA-2, Farm Records File (Automated). Providing the requested information is voluntary. However, failure to furnish the requested information will result in a determination of ineligibility to participate in and receive benefits under the Conservation Reserve Program.

Paperwork Reduction Act (PRA) Statement: The information collection is exempted from PRA as specified in 16 U.S.C. 3846(b)(1). The provisions of appropriate criminal and civil fraud, privacy, and other statutes may be applicable to the information provided. **RETURN THIS COMPLETED FORM TO YOUR COUNTY FSA OFFICE.**

In accordance with Federal civil rights law and U.S. Department of Agriculture (USDA) civil rights regulations and policies, the USDA, its Agencies, offices, and employees, and institutions participating in or administering USDA programs are prohibited from discriminating based on race, color, national origin, religion, sex, gender identity (including gender expression), sexual orientation, disability, age, marital status, family/parental status, income derived from a public assistance program, political beliefs, or reprisal or retaliation for prior civil rights activity, in any program or activity conducted or funded by USDA (not all bases apply to all programs). Remedies and complaint filing deadlines vary by program or incident.

Persons with disabilities who require alternative means of communication for program information (e.g., Braille, large print, audiotape, American Sign Language, etc.) should contact the responsible Agency or USDA's TARGET Center at (202) 720-2600 (voice and TTY) or contact USDA through the Federal Relay Service at (800) 877-8339. Additionally, program information may be made available in languages other than English.

To file a program discrimination complaint, complete the USDA Program Discrimination Complaint Form, AD-3027, found online at http://www.ascr.usda.gov/complaint_filing_cust.html and at any USDA office or write a letter addressed to USDA and provide in the letter all of the information requested in the form. To request a copy of the complaint form, call (866) 632-9992. Submit your completed form or letter to USDA by: (1) mail: U.S. Department of Agriculture Office of the Assistant Secretary for Civil Rights 1400 Independence Avenue, SW Washington, D.C. 20250-9410; (2) fax: (202) 690-7442; or (3) email: program.intake@usda.gov. USDA is an equal opportunity provider, employer, and lender.

RECEIVED
KEARNY COUNTY
FSA OFFICE
03/20/23

Date Printed: 04/25/2023