

# 102 +/- Acre Recreational Timberland Property Webster County, MS



**\$132,000**

Welcome to 102 Webster! Situated in the Cumberland community of Webster County, this property offers a serene escape just ten minutes north of Mathiston, MS, and a convenient thirty-minute drive west of Starkville. It predominantly comprises a 16-year-old pine plantation that has never been thinned, presenting ample potential for future growth. Featuring an internal trail network and two small food plots, as well as proximity to the Natchez Trace Parkway, this property is an ideal recreational retreat. Additionally, it offers the opportunity for timber growth, promising future income for the discerning buyer.

Please note that this property currently lacks legal or deeded access, requiring the new owner to address access arrangements accordingly.

**HARPER DAY**  
BROKER | OWNER

[Harper@DayPropertyCo.com](mailto:Harper@DayPropertyCo.com)

662.268.3017 [office](#) | 662.694.9751 [cell](#)



**DAY**  
**PROPERTIES**







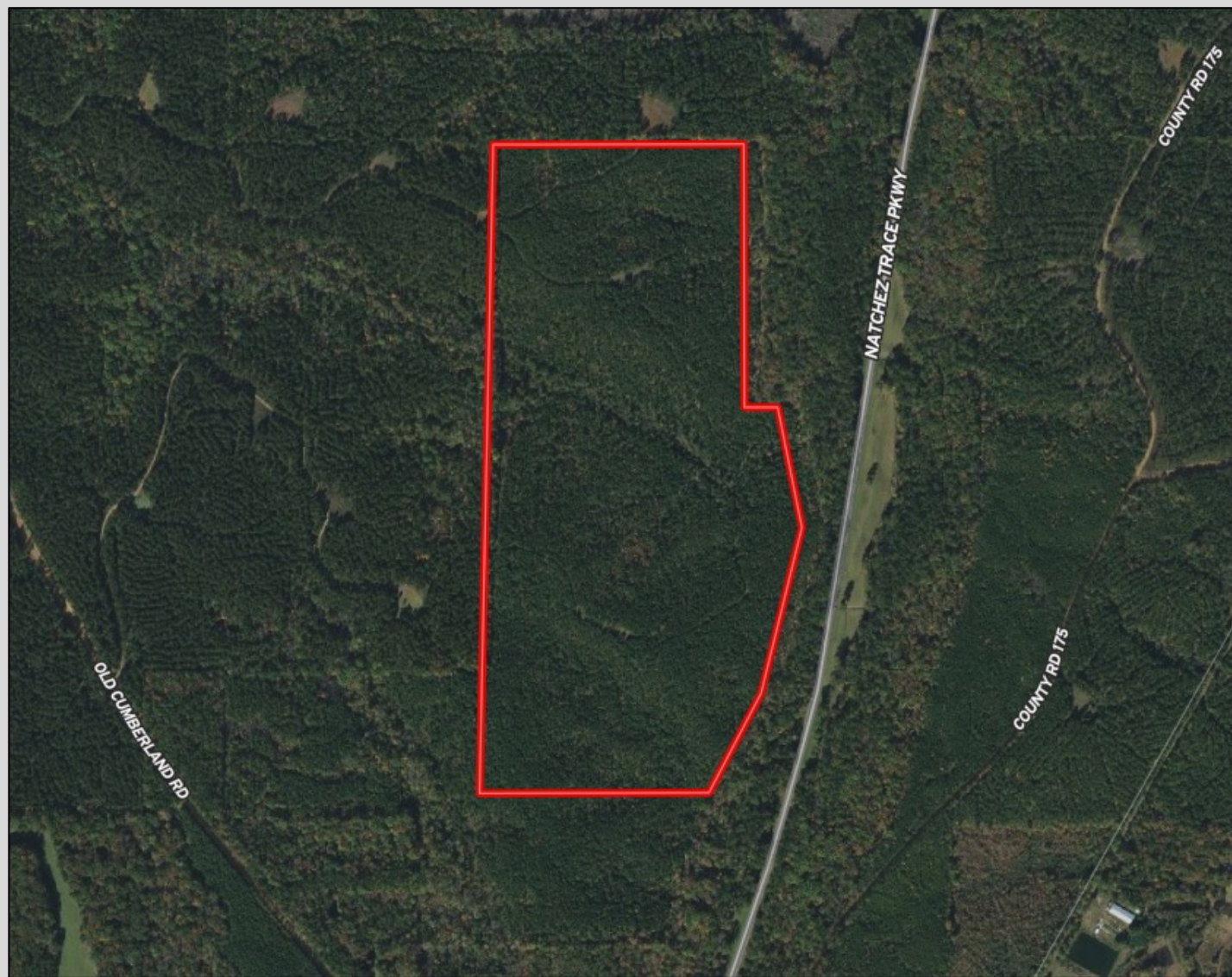








# Aerial Map



**HARPER DAY**  
BROKER | OWNER

[Harper@DayPropertyCo.com](mailto:Harper@DayPropertyCo.com)

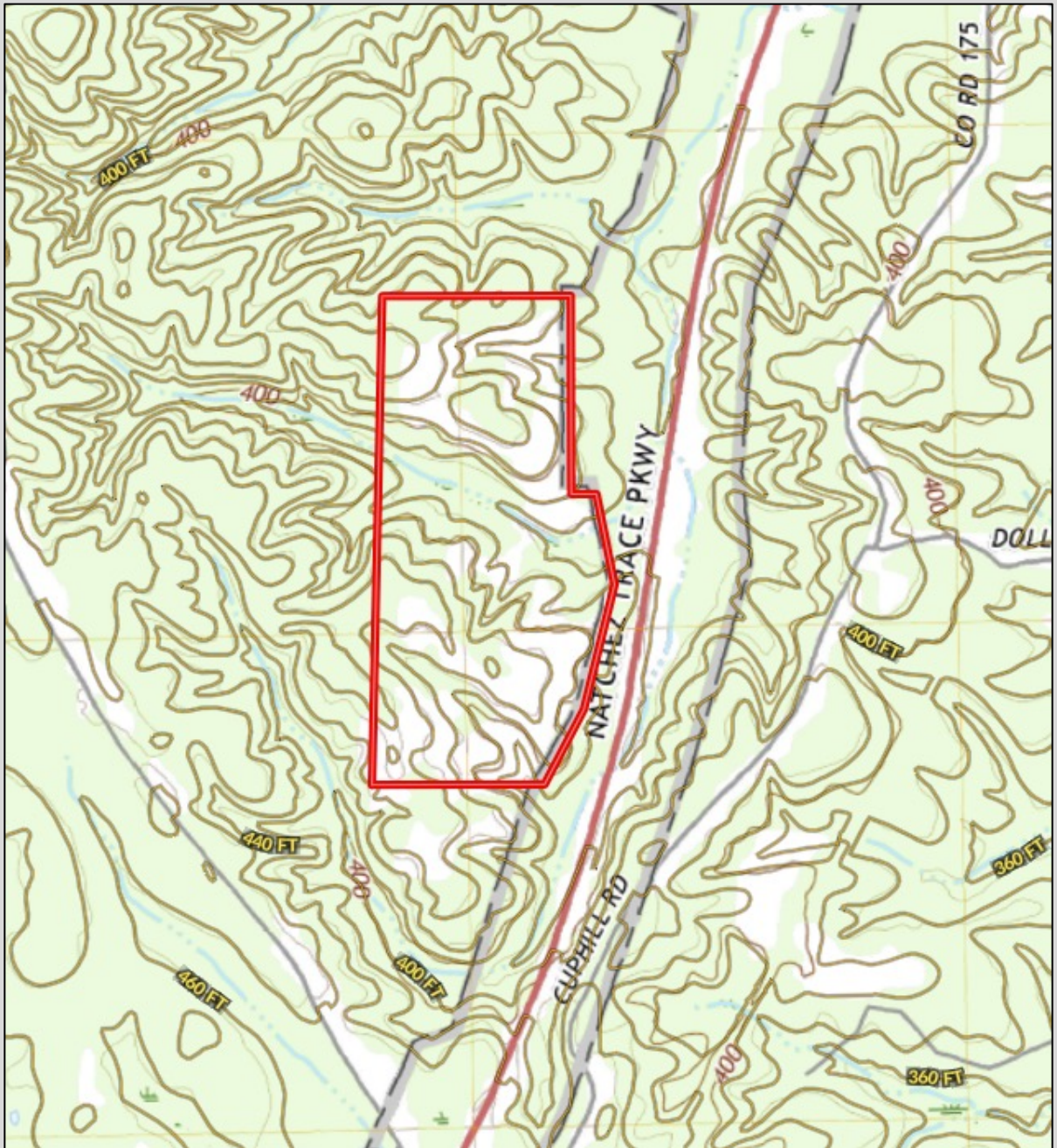
662.268.3017 office | 662.694.9751 cell



**DAY**  
**PROPERTIES**



# Topographical Map



**HARPER DAY**

BROKER | OWNER

[Harper@DayPropertyCo.com](mailto:Harper@DayPropertyCo.com)

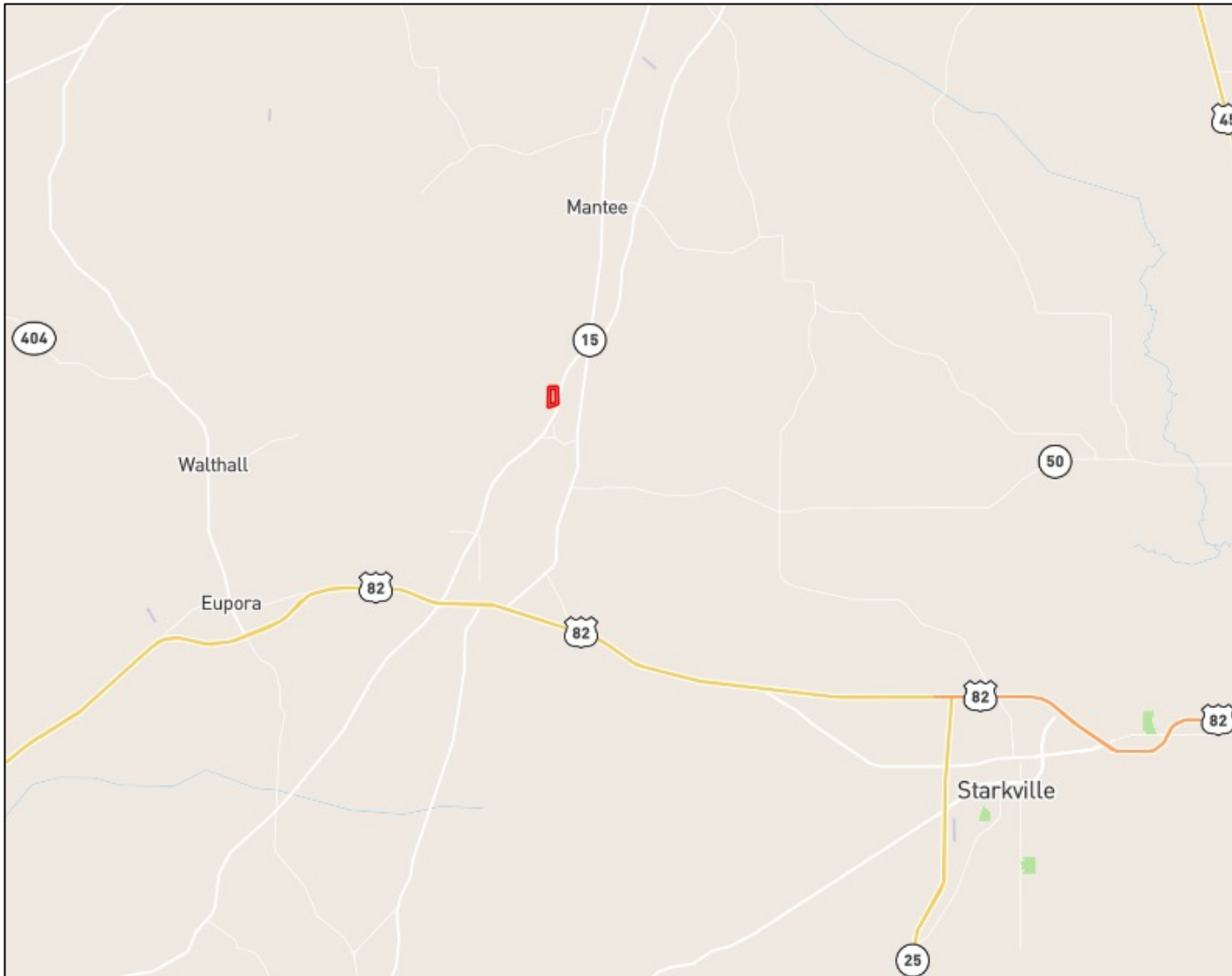
662.268.3017 office | 662.694.9751 cell



**DAY  
PROPERTIES**



# DIRECTIONAL MAP



Directions from Mathiston, MS: Travel North on US-82 West for 1.1 miles. Use the right lane to take The Natchez Trace Parkway Ramp. Travel on Natchez Trace Parkway for 6.5 miles. Turn right onto MS Hwy 50E. Turn left onto MS-50 W and travel 0.6 miles. The destination will be on your right.

[GOOGLE MAP LINK](#)

**HARPER DAY**

BROKER | OWNER

Harper@DayPropertyCo.com

662.268.3017 office | 662.694.9751 cell



**DAY  
PROPERTIES**