



# TEN MILE FARM

SCARBOROUGH RD  
ZOLFO SPRINGS, FL 33890

---

Daniel Lanier  
C: 863.698.2971  
[daniel.lanier@svn.com](mailto:daniel.lanier@svn.com)



# Property Overview



**Sale Price**

**\$2,540,000**

## OFFERING SUMMARY

**Acreage:** **254 ± Acres**

Price / Acre: \$10,004

City: Zolfo Springs

County: Hardee

Property Type: Land: Agronomics, Farms  
& Nurseries Properties,  
Sod, Vegetables

Video: [View Here](#)

## PROPERTY OVERVIEW

Ten Mile Farm is 253.9 acres located at the corner of Ten Mile Grade Road and Scarborough Road in southern Hardee County. Formerly a citrus grove, this property has already been cleared and is ready to be converted and planted into many new different types of crops such as sod, vegetables, watermelons or hay. The property is equipped with three 12" wells all powered by John Deere diesel engines. With 4,710 feet of hard road frontage on Scarborough Road and 3,150 feet of frontage on Ten Mile Grade Road, this corner property has a lot to offer.

# Specifications & Features



## SPECIFICATIONS & FEATURES

### Land Types:

- Agronomics
- Farms & Nurseries Properties
- Sod
- Vegetables

### Uplands / Wetlands:

26 ± acres wetlands, 227 ± acres uplands

### Soil Types:

- Smyrna Fine Sand
- Myakka Fine Sand
- Ona Fine Sand
- Pomona Fine Sand
- Placid Fine Sand
- Bassinger Fine Sand

### Water Source & Utilities:

Three 12" wells with diesel power units

### Road Frontage:

4,710 feet of frontage on Scarborough Road and 3,150 feet of frontage on Ten Mile Grade Road

### Fencing:

Perimeter fenced

### Current Use:

Farm

### Wells Information:

Three 12" wells with diesel power units

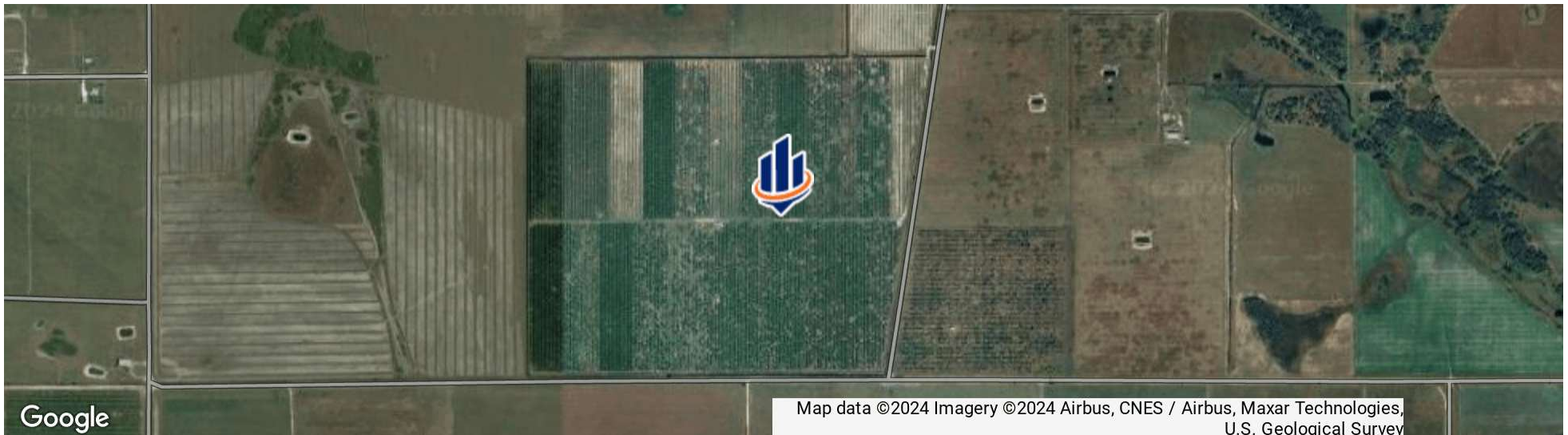


# Location



## LOCATION & DRIVING DIRECTIONS

- Parcel: 0836-27-0000-09010-0000
- GPS: 27.3444575, -81.6446894
- Driving Directions:
- From SR 66 in Zolfo Springs turn South on Sweetwater
  - Travel to George Marsh then turn East on Crewsville
  - Turn onto Scarborough for 3.3 mi and property is West





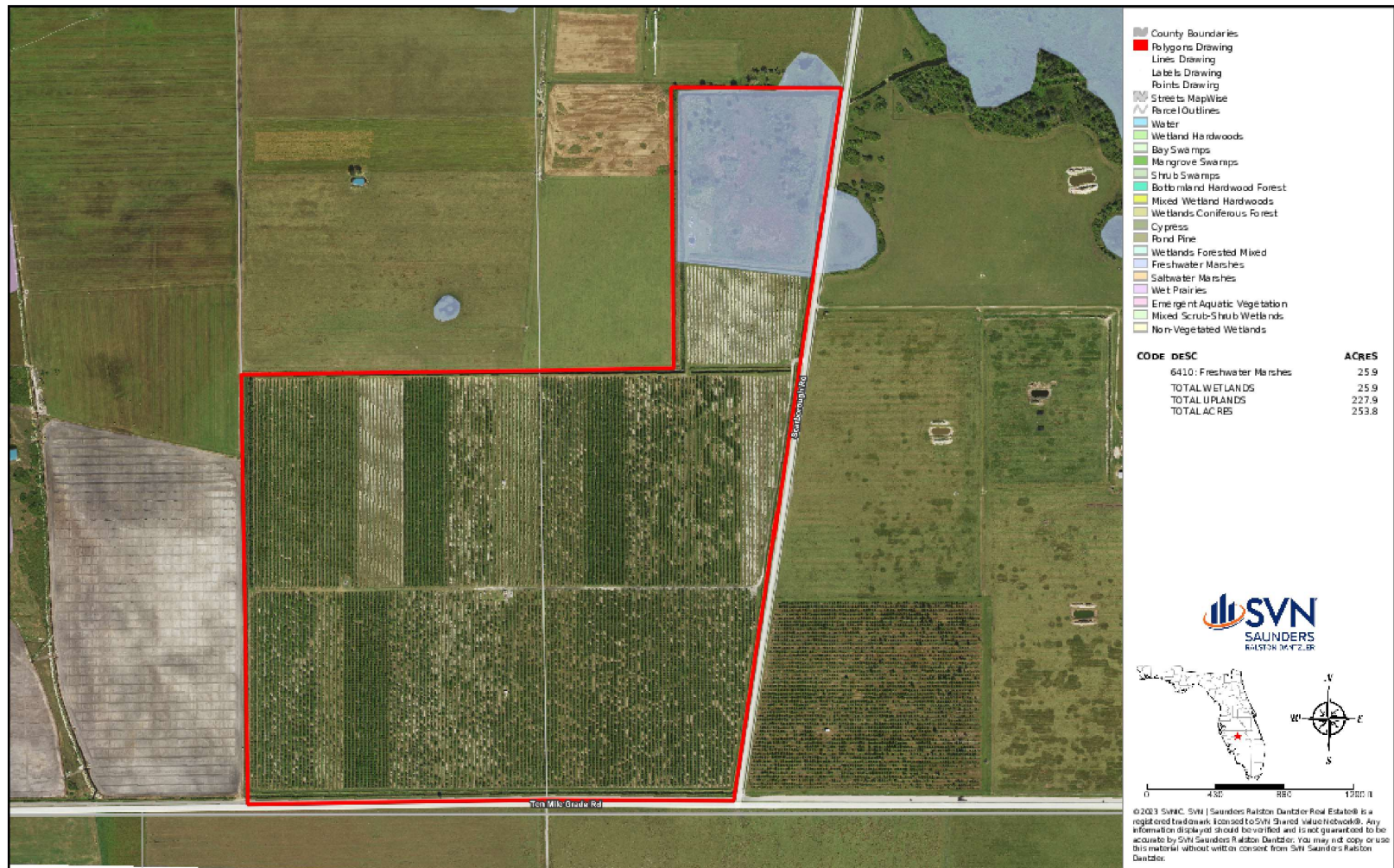






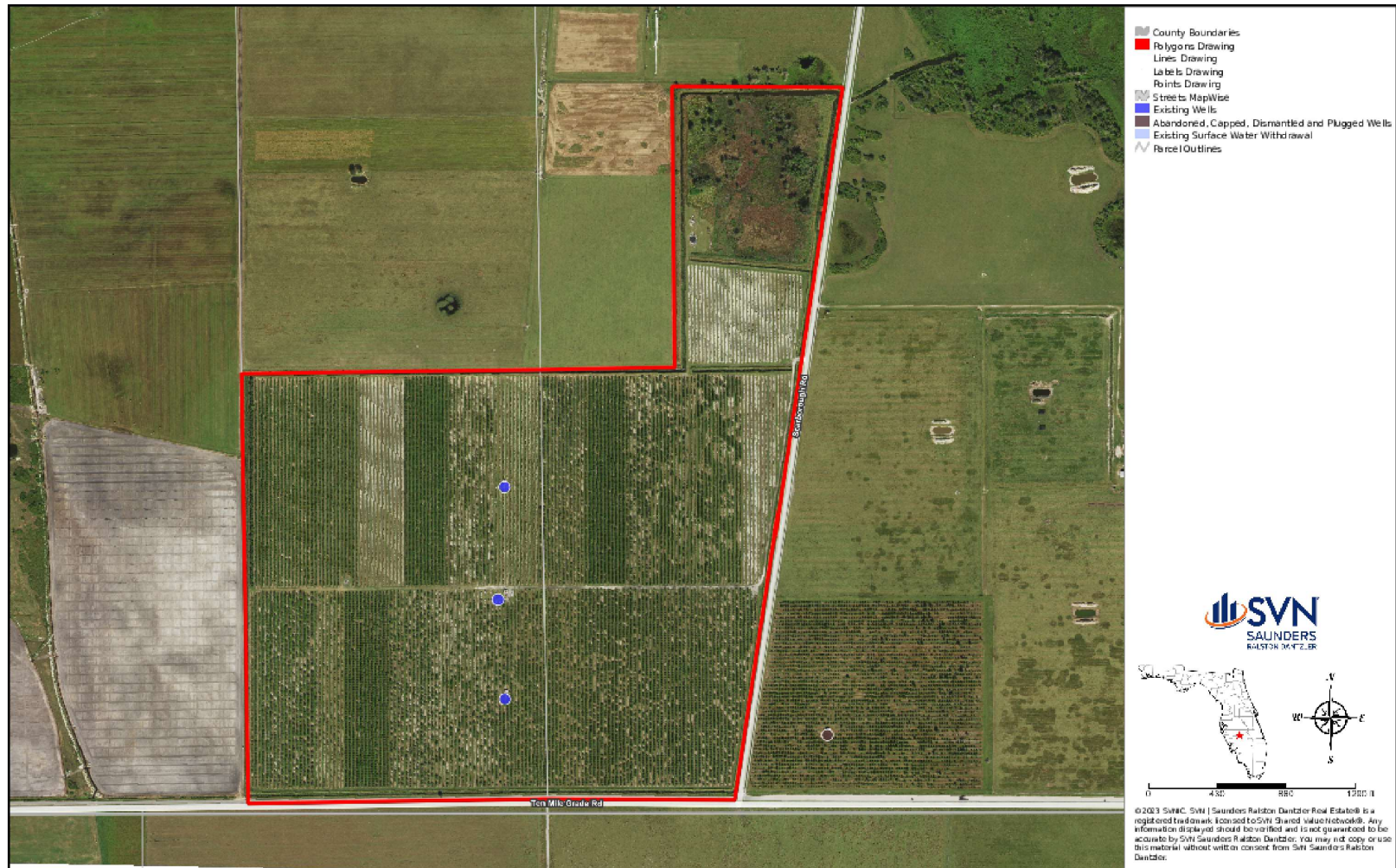


# Wetlands Map



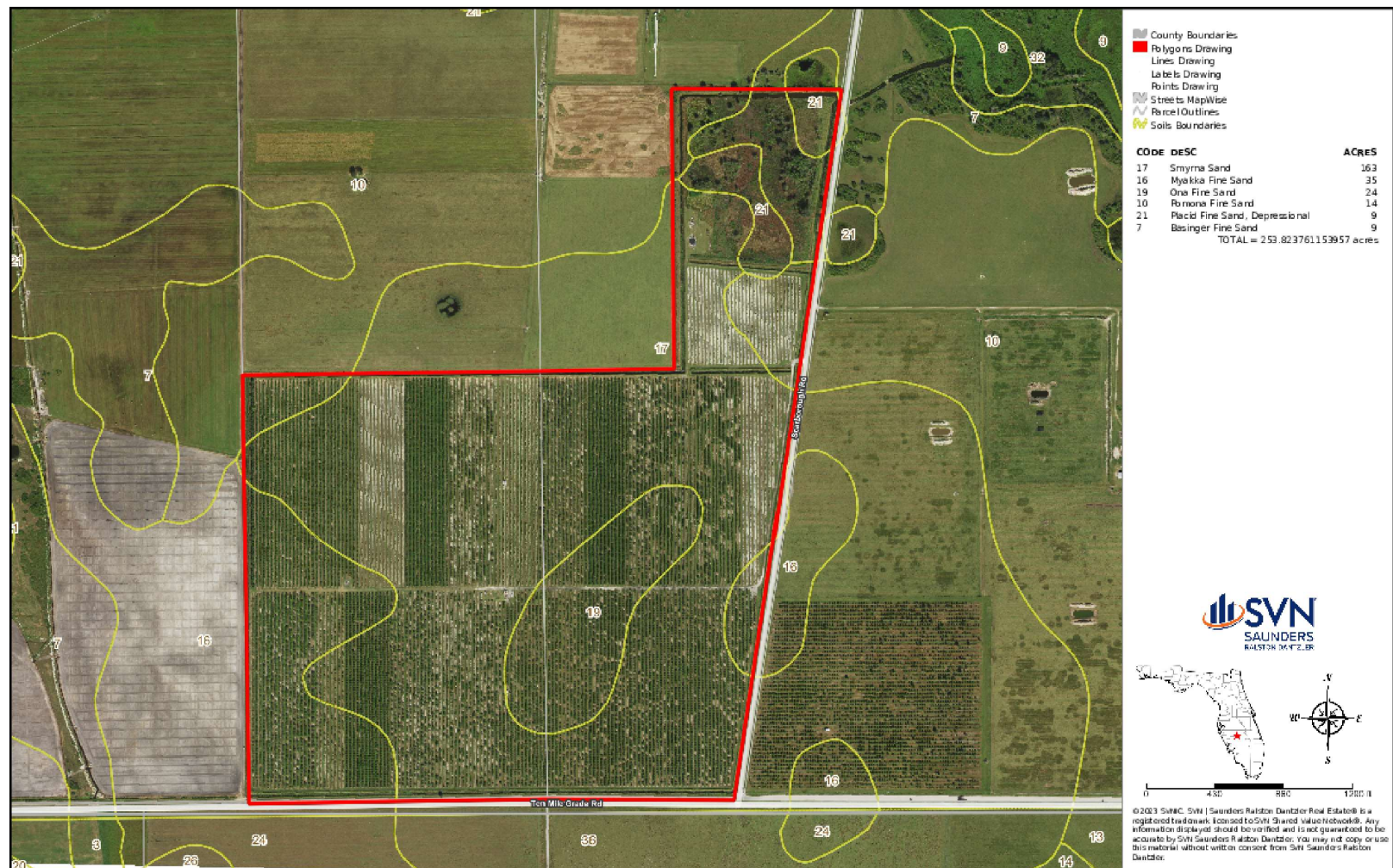


# Well Map

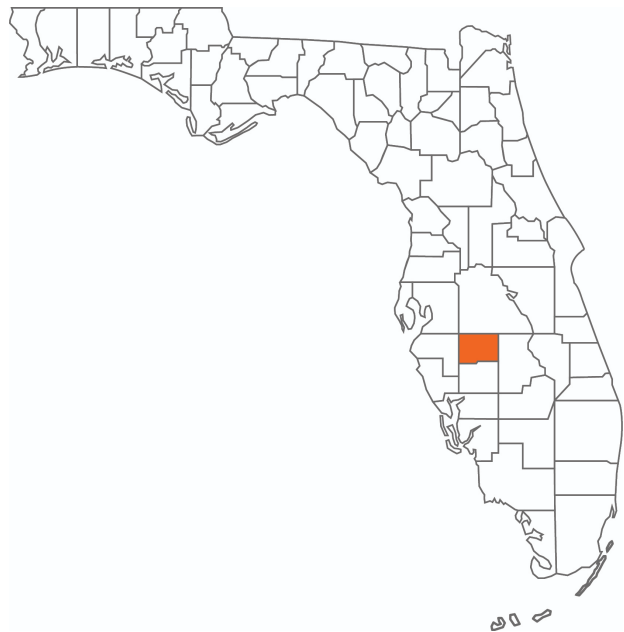




# Soil Map







**HARDEE COUNTY**  
**FLORIDA**

Founded	1921	Density	42.2 [2019]
County Seat	Wauchulla	Population	25,129 [2023]
Area	637 sq mi	Website	hardeecounty.net

Hardee County is located in West Central Florida and has a population of 25,645. Flowing through the county, the serene Peace River offers "Old Florida" recreation like fossil hunting, kayaking, and canoeing. Additionally, Hardee County is situated amid large phosphate deposits in an area known as "Bone Valley." With phosphate mining as a significant industry, The Mosaic Company has become a leading employer that currently owns all the mining land in Hardee County. The Mosaic Company is a Fortune 500 company with headquarters in Tampa, Florida

According to DataUSA, the county's 2020 economy employs 9,710 people, with a high number of employees in the occupations of Forestry, Fishing & Hunting [1,002 people]. The highest-paying industries by median earnings are Transportation & Warehousing & Utilities [\$47,772], Finance & Insurance, & Real Estate [\$44,241], and Public Administration [\$39,267].



# Advisor Biography



**DANIEL LANIER**

Senior Advisor

daniel.lanier@svn.com

Direct: 877.518.5263 x377 | Cell: 863.698.2971

## PROFESSIONAL BACKGROUND

Daniel Lanier is a Senior Advisor at SVN | Saunders Ralston Dantzler Real Estate in Lakeland, Florida.

Previously, Daniel was a founder and managing partner of Sawmill Citrus Nursery. With years of experience in Central Florida's agricultural industry, his knowledge and expertise extend to and beyond commercial beef cattle, citrus, nursery, and row crop farming.

At SVN SRD, Daniel's specialties encompass a wide range of land types, including ranches, citrus groves, and agricultural land. From livestock to produce, his expertise has assisted clients in various land transactions throughout the Central Florida real estate market.

Daniel has also worked in crop insurance since 2011. This experience, now combined with his role as a real estate advisor, has allowed him to service clients all over the southeastern United States, further solidifying himself as an expert in this field.

Growing up in Central Florida, Daniel graduated from Fort Meade High School and South Florida State College. He and his wife, Randi, have been married since 2015. Together, they are proud parents to both a son and a daughter.

- The Florida Farm Bureau State Young Farmers and Ranchers Leadership Group [2016-2018]

**SVN | Saunders Ralston Dantzler**  
1723 Bartow Rd  
Lakeland, FL 33801





# ONE OF AMERICA'S BEST BROKERAGES



One of America's  
Best Brokerages



APEX 2022 Top  
National Producer



Most Influential  
Business Leaders



Largest Commercial  
Real Estate Brokers  
in Tampa Bay



Ranked 210 on Inc.  
5000 Regional List





For more information visit [www.SVNsaunders.com](http://www.SVNsaunders.com)

#### HEADQUARTERS

1723 Bartow Rd  
Lakeland, FL 33801  
863.648.1528

#### ORLANDO

605 E Robinson Street, Suite 410  
Orlando, Florida 32801  
386.438.5896

#### NORTH FLORIDA

356 NW Lake City Avenue  
Lake City, Florida 32055  
352.364.0070

#### GEORGIA

203 E Monroe Street  
Thomasville, Georgia 31792  
229.299.8600

---

©2024 Saunders Ralston Dantzler Real Estate. All SVN® Offices Independently Owned and Operated SVN | Saunders Ralston Dantzler Real Estate is a full-service land and commercial real estate brokerage representing buyers, sellers, investors, institutions, and landowners since 1996. We are recognized nationally as an authority on all types of land, including agriculture, ranch, recreation, and residential development. Our commercial real estate services include property management, leasing and tenant representation, valuation, business brokerage, and advisory and counseling services for office, retail, industrial, and multifamily properties. Our firm also features an auction company, a forestry division, international partnerships, and extensive expertise in conservation easements. Located in Florida, Georgia, and Alabama, we provide proven leadership and collaborative expertise backed by the strength of the SVN® global platform.

