

# Sandfall Mountain | 32.5 ± Acres



## About the Property

Stunning, peaceful mountain retreat where the possibilities are only limited by your imagination and budget. Whether your dream is to build a majestic home on the ridgetop with spectacular views of the Shoals area below or to simply get away from your hectic, everyday life and enjoy hiking, camping, hunting or just watching the beautiful sunset and eagles soaring above, this property is for you. This beautiful tract is loaded with deer and turkey and covered in timber.

A beautiful barndominium is already located on the property, consisting of a 40'x60' Bigbee steel building main shop/garage with concrete floor, 17' sidewalls and 2-12' wide by 14' tall garage doors. 50-amp electrical service is available both inside and outside the main shop. Also inside the main shop, 15'x20' is finished in living space. The 15'x60' overhang on the north side consists of 15'x40' finished in living area and 15'x20' covered porch. In summary, there is 2,100 square feet of shop/garage space available and 900 square feet of heated/cooled living area. The finished living space has 2 bedrooms, 1 bathroom, and an open living/kitchen area, all beautifully finished in rustic tongue and groove walls and metal ceilings. On the south side, there is an 8'x 60' overhang with gravel floor for parking equipment in the dry.

All utilities are already located on the property, including underground power, Hawk Pride water, and NetSpeedNow internet service. There is a septic system in place that is approved for the existing barndominium and an additional dwelling with up to 4 bedrooms. The power and septic system are already in place in the clearing near the barndominium for construction of a home with views of the valley below.

## Facts and Features

**Colbert County, Alabama**

152 Sandfall Trail, Tuscumbia, AL 35674

32.5 ± Acres

Best Use: Home site | Recreational

## For Sale

\$ 599,000



**SOUTH MAIN  
LAND REALTY**

**Clyde Brisendine**

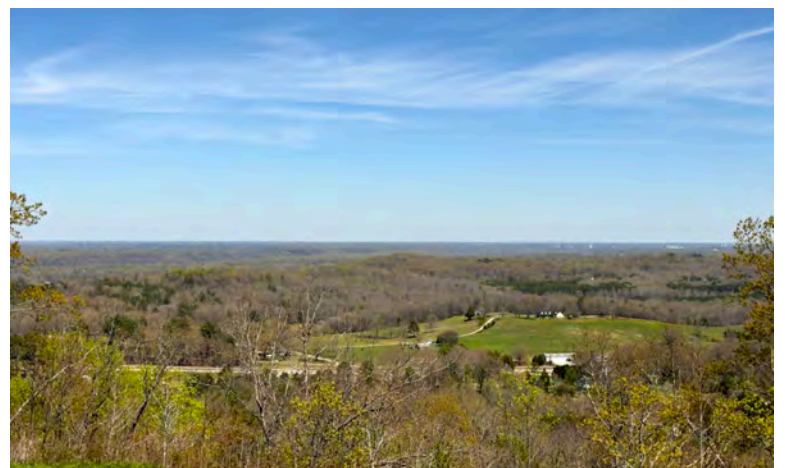
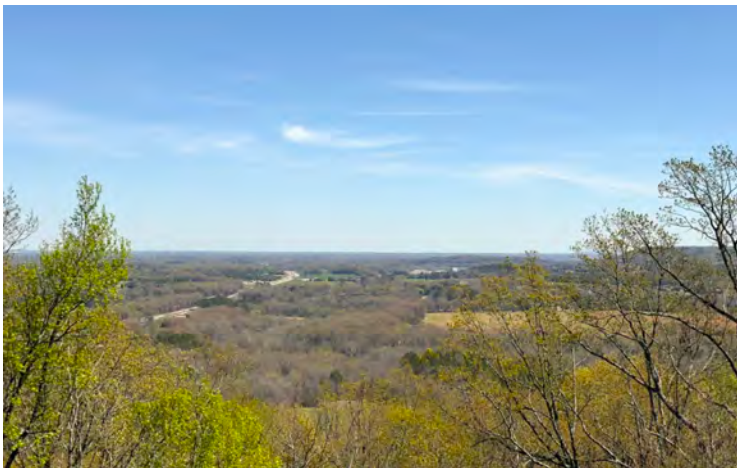
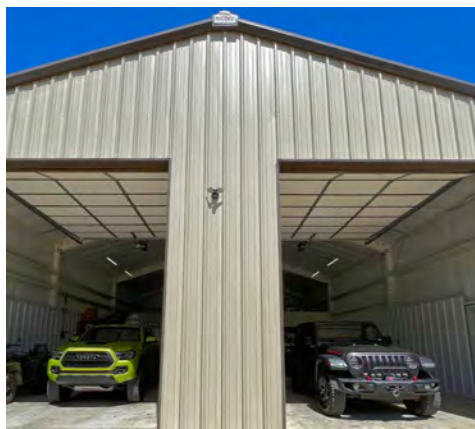
(256) 383-8990

cbrisendine@southmainrealty.com

Stephan Tomlinson, Broker

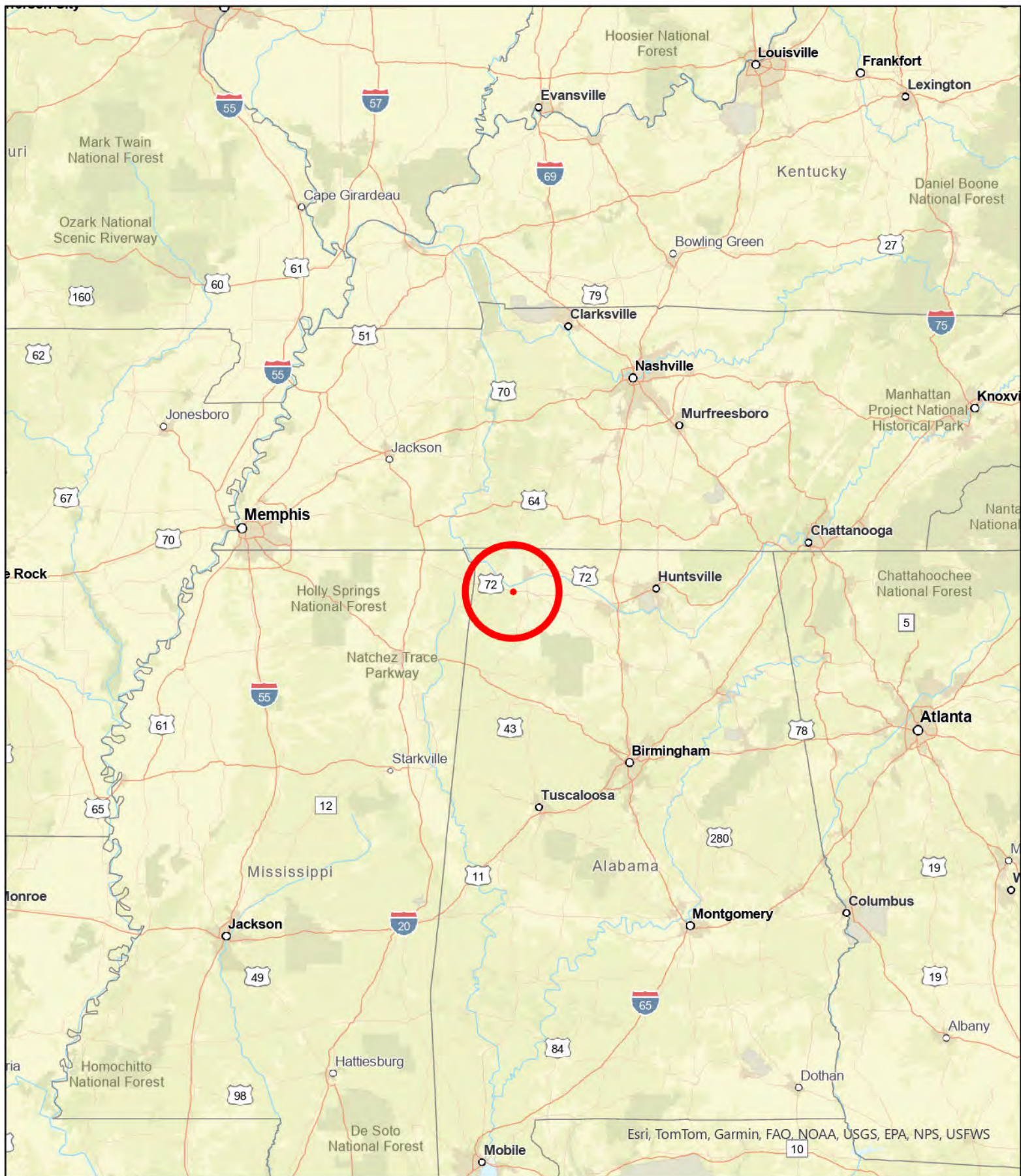


# Sandfall Mountain| 32.5 ± Acres



Clyde Brisendine  
256-383-8990  
cbrisendine@southmainrealty.com





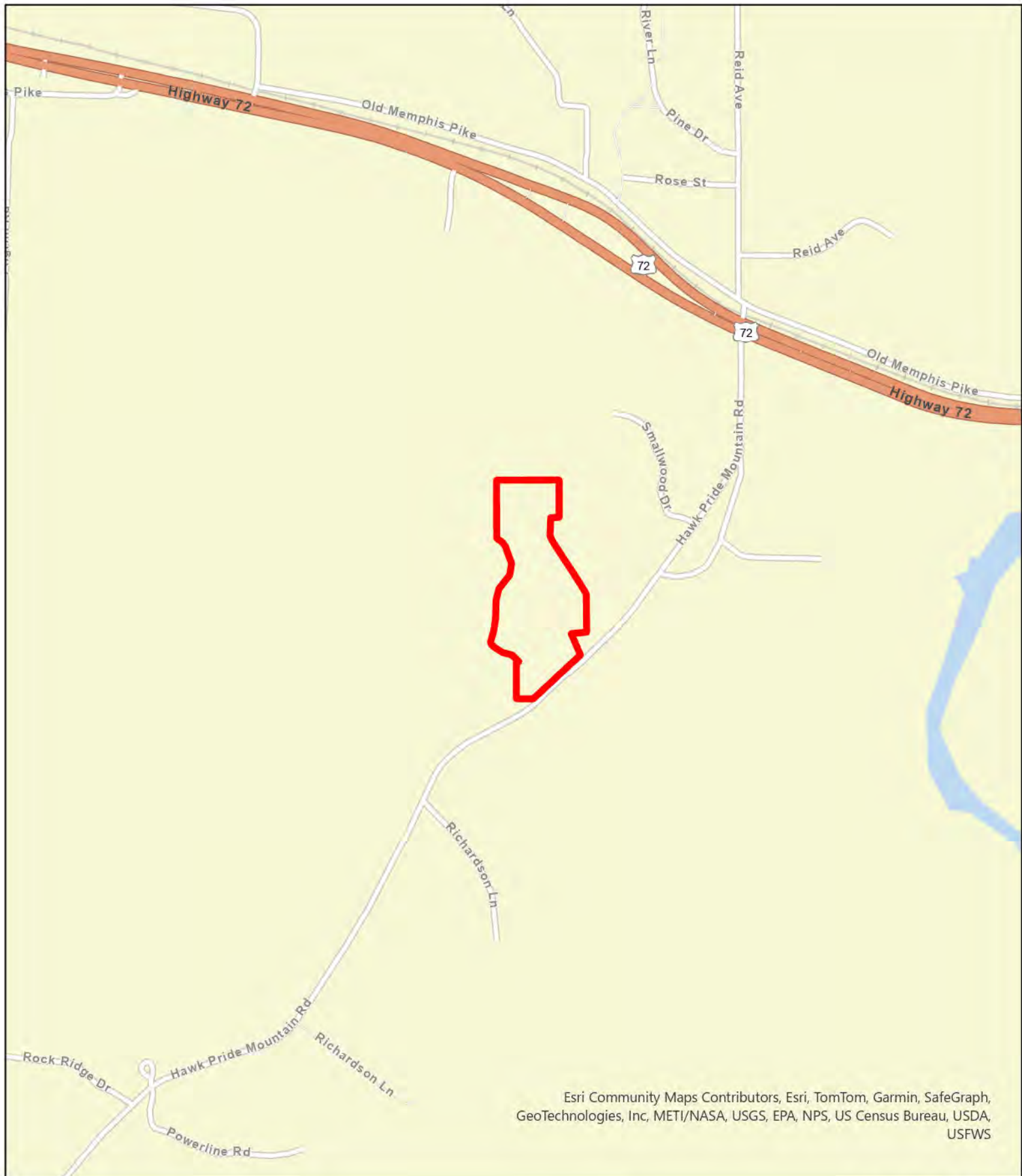
CRM01o  
Colbert County, AL  
General Area



0 40 80 160  
Miles

South Main Land Realty  
(256) 383-8990





Esri Community Maps Contributors, Esri, TomTom, Garmin, SafeGraph, GeoTechnologies, Inc, METI/NASA, USGS, EPA, NPS, US Census Bureau, USDA, USFWS

# CRM01o Colbert County, AL Local Roads



0 0.13 0.25 0.5  
Miles

South Main Land Realty  
(256) 383-8990





Maxar, Microsoft

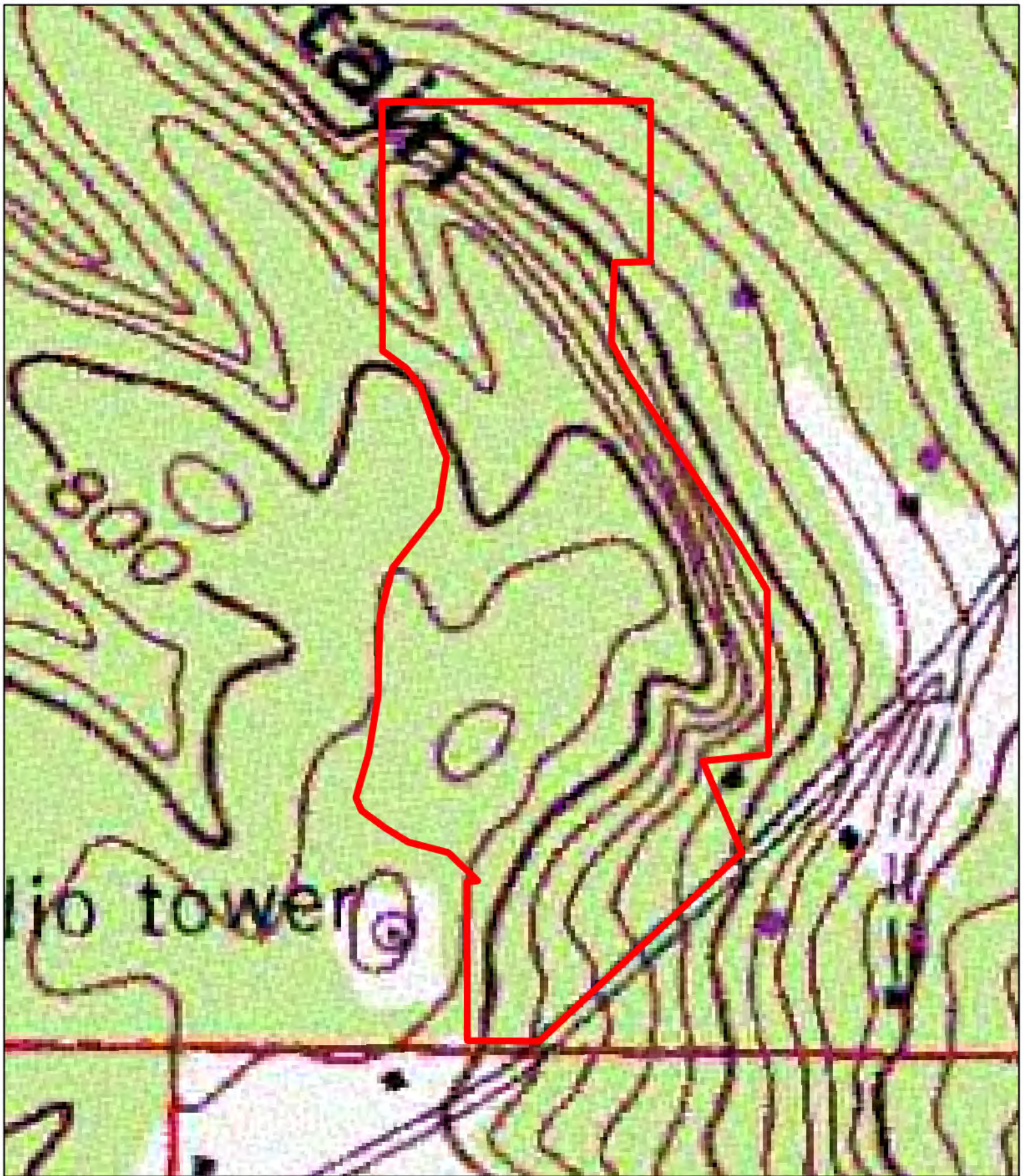
CRM01o  
Colbert County, AL  
Aerial



South Main Land Realty  
(256) 383-8990

0 175 350 700 Feet





CRM01o  
Colbert County, AL  
Topo



South Main Land Realty  
(256) 383-8990

