

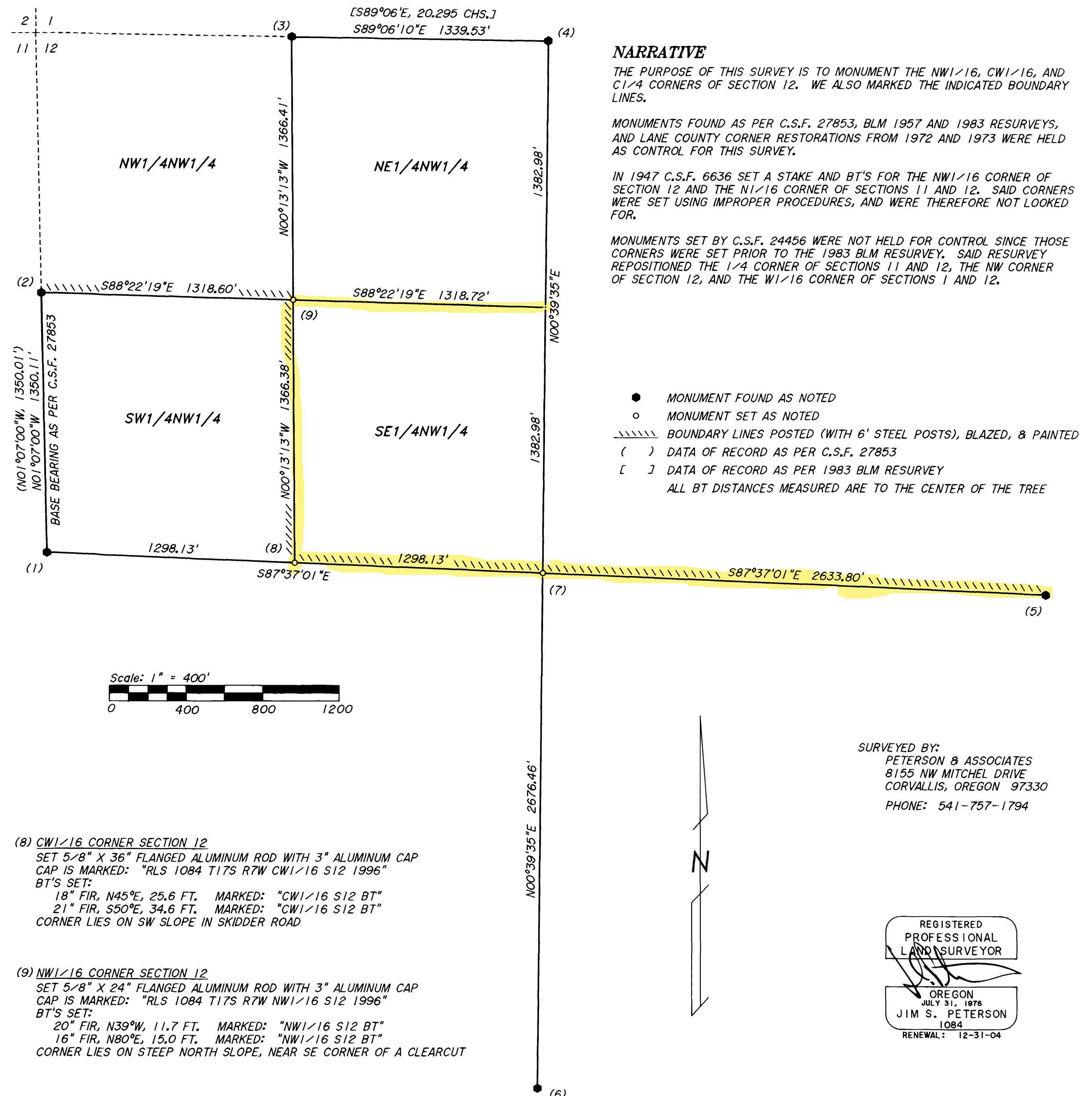
RECORD OF SURVEY

for **DAN MONTGOMERY**
SCOTT TIMBER CO.

in the NW1/4 SECTION 12, T17S, R7W, W.M.
LANE COUNTY, OREGON
AUGUST 7, 1996

CORNER NOTES

- (1) 1/4 CORNER SECTIONS 11 & 12
FOUND 3 1/4" BLM BRASS CAP (1983)
BT'S FOUND:
32" FIR, (N73 1/4°E, 44 LKS.) HEALED FACE
30" W. FIR, (S62 1/4°W, 135 1/2 LKS.) HEALED FACE
- (2) N1/16 CORNER SECTIONS 11 & 12
FOUND 5/8" IRON ROD WITH PLASTIC CAP (LS 1084) (C.S.F. 27853)
BT'S FOUND:
14" FIR, (N82°E, 9.7 FT.) HEALED FACE
16" FIR, (S66°W, 14.3 FT.) HEALED FACE
CORNER LIES ON BENCH, 400' NORTH OF RIDGE TOP
- (3) W1/16 CORNER SECTIONS 1 & 12
FOUND 3/8" STEEL BOLT 2" BELOW ROAD SURFACE (BLM - 1983)
BT'S FOUND:
21" FIR, (N10 3/4°E, 110 1/2 LKS.) HEALED FACE
17" FIR SNAG, (S05 1/4°E, 181 1/2 LKS.) HEALED FACE
21" FIR, (S62 1/2°W, 71 1/2 LKS.) HEALED FACE
BLM BRASS CAP (REF. MON.), (SOUTH, 40 LKS.)
CORNER LIES IN COOK ROAD
- (4) 1/4 CORNER SECTIONS 1 & 12
FOUND 3 1/4" GLO BRASS CAP (1957)
BT'S FOUND:
18" FIR, (N08°19'W, 40.79 FT.) HEALED FACE
10" FIR, (S17°W, 57 LKS.) HEALED FACE
ALSO 4 BT STUMPS AS PER 1983 BLM RESURVEY NOTES
CORNER LIES 75' SOUTH OF COOK ROAD
- (5) 1/4 CORNER SECTIONS 12 & 7
FOUND 3 1/4" LANE COUNTY BRASS CAP (1972)
BT'S FOUND:
38" FIR, (N68°W, 32.5 FT.) HEALED FACE
22" FIR, (N72 1/2°E, 43.5 FT.) HEALED FACE
CORNER LIES IN FENCE LINE (FENCES TO N, S, & E)
- (6) 1/4 CORNER SECTIONS 12 & 13
FOUND 3 1/4" LANE COUNTY BRASS CAP (1973)
BT'S NOW STUMPS
- (7) C1/4 CORNER SECTION 12
SET 5/8" X 36" FLANGED ALUMINUM ROD WITH 3" ALUMINUM CAP
CAP IS MARKED: "RLS 1084 T17S R7W C1/4 S12 1996"
BT'S SET:
13" FIR, N16°E, 14.2 FT. MARKED: "C1/4 S12 BT"
13" FIR, S66°E, 6.0 FT. MARKED: "C1/4 S12 BT"
19" FIR, S52°W, 35.7 FT. MARKED: "C1/4 S12 BT"
21" FIR, N68°W, 8.4 FT. MARKED: "C1/4 S12 BT"



LANE COUNTY SURVEYORS OFFICE
C.S. FILE NO. 38244
FILING DATE 15 OCT. '93 C

NARRATIVE

THE PURPOSE OF THIS SURVEY IS TO MONUMENT THE NW1/16, CW1/16, AND C1/4 CORNERS OF SECTION 12. WE ALSO MARKED THE INDICATED BOUNDARY LINES.

MONUMENTS FOUND AS PER C.S.F. 27853, BLM 1957 AND 1983 RESURVEYS, AND LANE COUNTY CORNER RESTORATIONS FROM 1972 AND 1973 WERE HELD AS CONTROL FOR THIS SURVEY.

IN 1947 C.S.F. 6636 SET A STAKE AND BT'S FOR THE NW1/16 CORNER OF SECTION 12 AND THE N1/16 CORNER OF SECTIONS 11 AND 12. SAID CORNERS WERE SET USING IMPROPER PROCEDURES, AND WERE THEREFORE NOT LOOKED FOR.

MONUMENTS SET BY C.S.F. 24456 WERE NOT HELD FOR CONTROL SINCE THOSE CORNERS WERE SET PRIOR TO THE 1983 BLM RESURVEY. SAID RESURVEY REPOSITIONED THE 1/4 CORNER OF SECTIONS 11 AND 12, THE NW CORNER OF SECTION 12, AND THE W1/16 CORNER OF SECTIONS 1 AND 12.

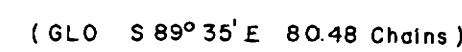
SURVEYED BY:
PETERSON & ASSOCIATES
8155 NW MITCHEL DRIVE
CORVALLIS, OREGON 97330
PHONE: 541-757-1794

REGISTERED
PROFESSIONAL
LAND SURVEYOR

OREGON
JULY 31, 1978
JIM S. PETERSON
1084
RENEWAL: 12-31-04

CLANE COUNTY, OREGON

FEBRUARY, 1979



- ① NE Corner Section 7
Found Lane County brass cap as per County reestablishment notes No. 4664

- ② E 1/4 Corner Section 7
Found Lane County brass cap as per County reestablishment notes No 4673

- ③ SE Corner Section 7
Found Lane County brass cap as per County reestablishment notes No. 5045

- ④ S 1/4 Corner Section 7
Found no trace of original or reestablished corner or bearing trees
Found 3/4" iron pipe, 9 feet East of old N-S fence line, at proportionate position
BT's found
28" White Oak, N 27 1/4° W, 68.2 Ft. Scribed "1/4 S7 BT"
No trees in Section 18

- ⑤ SW Corner Section 7
Found Lane County brass cap as per County reestablishment notes No. 4674

- ⑥ W 1/4 Corner Section 7
Found Lane County brass cap as per County reestablishment notes No. 4672

- ⑦ NW Corner Section 7
Found Lane County brass cap as per County reestablishment notes No. 4668

- ⑧ N 1/4 Corner Section 7
Found no trace of original Witness Corner or bearing trees.
Computed proportionate position but could not set corner.

- ⑨ NE 1/16 Corner Section 7
Found 3/4" iron pipe 45 feet NW of centerline of Sheffler Road
B T's found
16" Fir, N 52 3/4° W, 41.2 Ft Scribed "NE 1/16
14" Fir, N 21 3/4° E, 32.8 Ft "NE 1/16

- ⑩ CE 1/16 Corner Section 7
Found PK nail in asphalt, 1 foot East of as-built centerline of Poodle Creek Road
BT's found
- | | | |
|--------------------------------|---------|-----------------|
| 14" Fir, N 49 1/2° E, 64.1 Ft. | Scribed | "CE 1/16 S7 BT" |
| 10" Fir, S 72° E, 73.6 Ft. | | "CE 1/16 S7 BT" |


- ② SE 1/16 Corner Section 7
Found PK nail in asphalt, 8 feet East of as-built centerline of Poodle Creek Road
BT's found
12" Fir, N 42 1/2° E, 33.4 Ft. Scribed "SE 1/16 S7 BT"
Power pole, S 41° E, 35.1 Ft.

- (12) SW 1/6 Corner Section 7
Set 3/4" iron pipe N 23°31' E, 8.7 feet of a 3-way (N,S,E) fence corner.
BT's set
16" Alder, N 80 3/4° W, 34.3 Ft. Bark Scribed "SW 1/6 S7 BT"
8" Fir, S 53° W, 59.1 Ft "BT"

- (13) CW 1/6 Corner Section 7
Set 3/4" iron pipe S10°31'W, 6.8 feet of a 3-way (N,S,W) fence corner,
BT's set
"12" Fir; N 07 1/4° W, 24.9 Ft. Scribed "CW 1/6 S7 BT"
"14" Fir, N 54 1/4° E, 30.0 Ft. "CW 1/6 S7 BT"

- (14) NW 1/16 Corner Section 7
Set 3/4" iron pipe N 33°02' W, 20.8 feet of a 4-way (N,S,E,W) fence corner.
BT's set
8" Fir, N 29°20' W, 24.2 Ft. Scribed " NW 1/16 S7 BT"
14" Fir, N 66°34' E, 18.8 Ft. "NW 1/16 S7 BT"

Scale 1" = 400'



A horizontal scale bar with a central zero point. To the left of zero is a mark for 400, and to the right is a mark for 400. The bar is divided into segments by vertical lines.

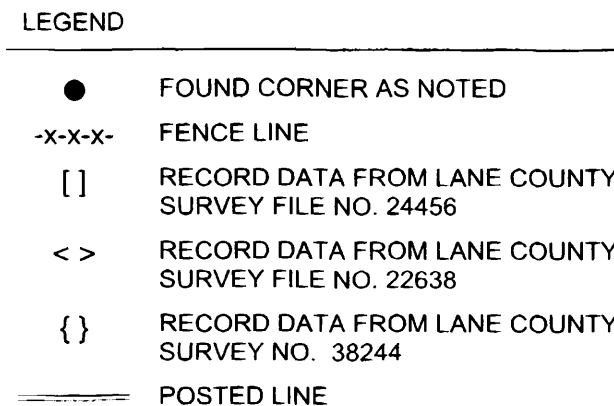
- 1) Basis of bearings is a solar observation.
- 2) Distances to bearing trees set are to center of the trees.
- 3) (---) Indicates data of record.
- 4) * Monument found as noted.
- 5) O Monument set as noted


f. S. [Signature]

OREGON
JULY 31 1976
JIM S. PETERSON
1064

321669

LANE COUNTY SURVEYORS OFFICE
C S FILE NO. 38309
FILING DATE 24 NOV 2003 B



 Ward NorthWest, Inc.

P.O. BOX 105 FLORENCE, OR 97439
(541) 997-9201 FAX: 541-997-3546

FILE NAME		
03-66.TRV		
SCALE	DATE	DRAWN BY
400 Ft/in	9/25/2003	BRP
JOB	REVISION	SHEET
03-66	---	1/1

This map drawn with TRAVERSE PC Software