



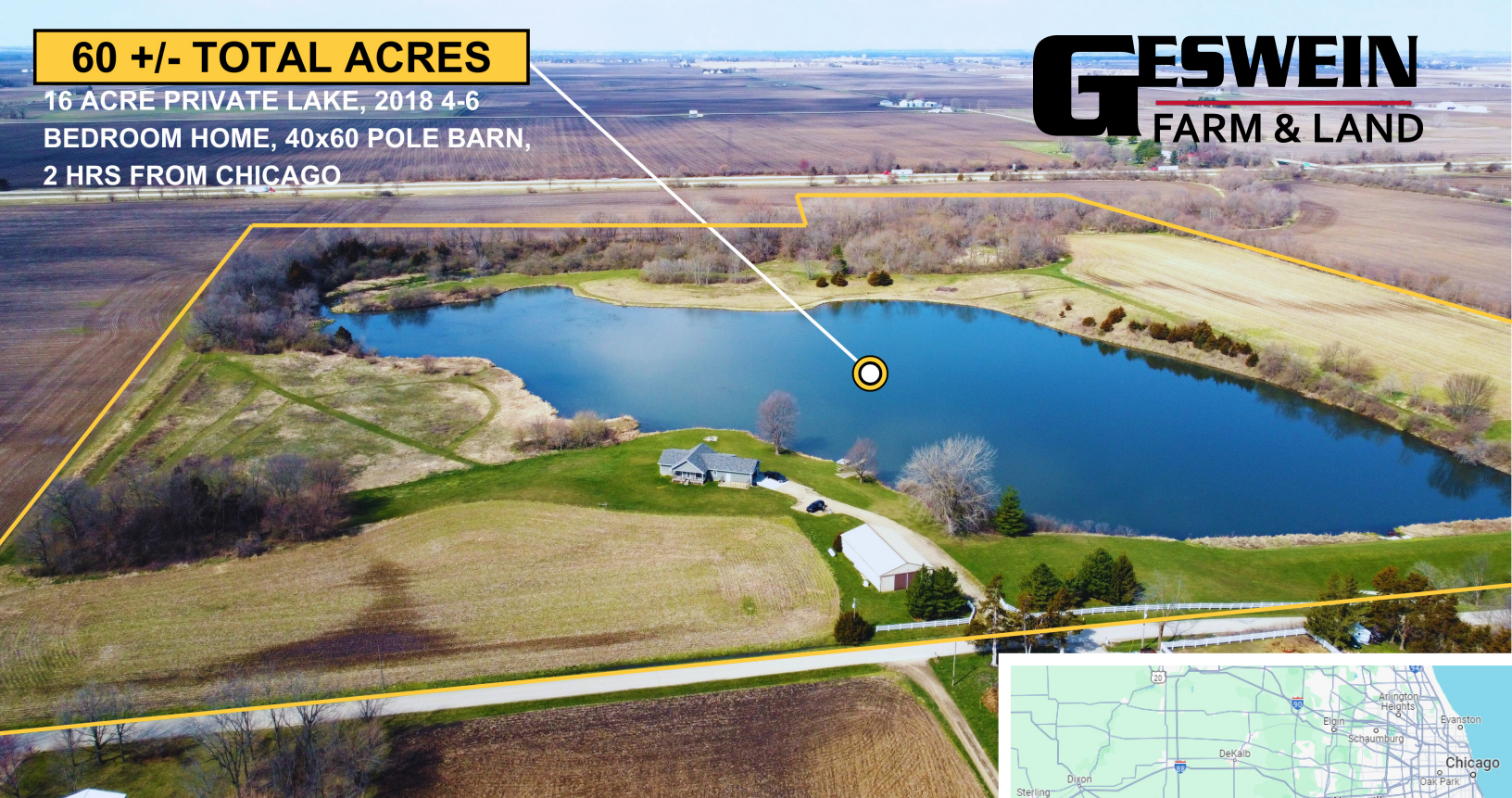
BEAVER GLENN LAKE ESTATE

GESWEIN
FARM & LAND

60 +/- TOTAL ACRES

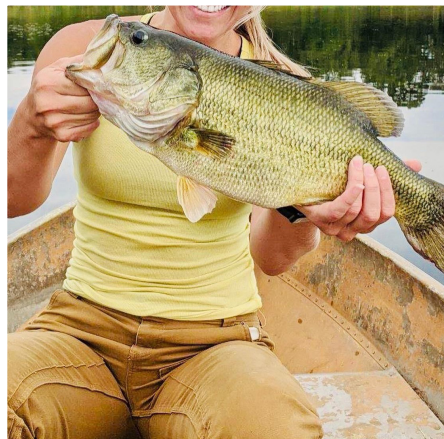
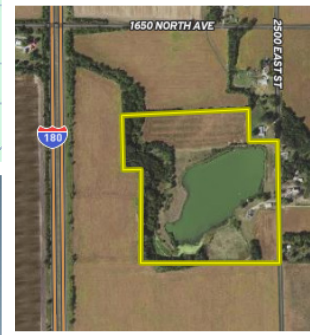
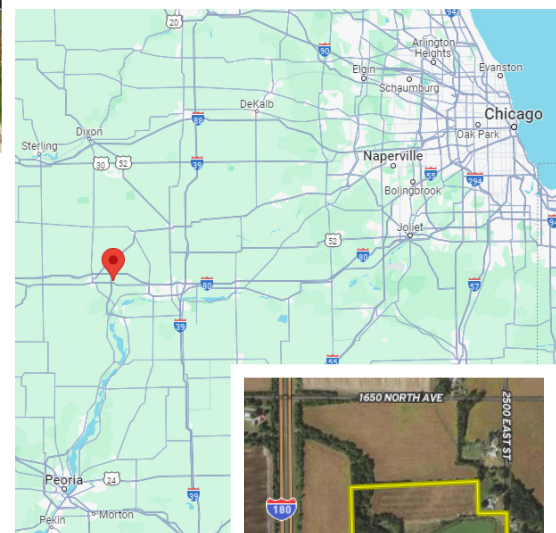
16 ACRE PRIVATE LAKE, 2018 4-6
BEDROOM HOME, 40x60 POLE BARN,
2 HRS FROM CHICAGO

GESWEIN
FARM & LAND



Princeton, Illinois

- Beautiful Home on 60 +/- Acres
- Aerated Stocked 16 +/- Acre Private Lake
- 40' x 60' Pole Barn
- ~ 2 Hours from Downtown Chicago
- ~ 1 Hour from Quad Cities
- And So Much More!



FOR MORE INFORMATION CONTACT:

JEREMY THOMPSON, BROKER

(815) 351 - 5572

jeremy.thompson@Gfarmland.com

G
FARM & LAND
Real Estate & Auctions



BEAVER GLENN LAKE ESTATE

Princeton, Illinois

- Beautiful Home on 60 +/- Acres
- 40' x 60' Pole Barn



4 Full Bedrooms
(2 Master Suites)
3.5 Bathrooms
Granite Counter Tops
RO System for Drinking Water
Sump Pump
Generac Generator
2 x 6 Construction



FOR MORE INFORMATION CONTACT:
JEREMY THOMPSON, BROKER
(815) 351 - 5572
jeremy.thompson@Gfarmland.com



16 +/- PRIVATE LAKE



7 Aerators

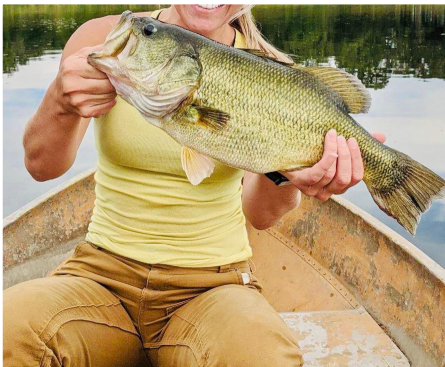
Abundant Fish:

5+ lb bass, crappie, & bluegill

Excellent Fishing

Kayaking

Swimming



FOR MORE INFORMATION CONTACT:

JEREMY THOMPSON, BROKER

(815) 351 - 5572

jeremy.thompson@Gfarmland.com



OUTDOORSMAN'S DREAM



Abundant Wildlife
Excellent Hunting
ATV Trails
Creek
Foodplot



FOR MORE INFORMATION CONTACT:
JEREMY THOMPSON, BROKER
(815) 351 - 5572
jeremy.thompson@Gfarmland.com



INVESTMENT OPPORTUNITY

Possible AirBnB Property

Excellent Location

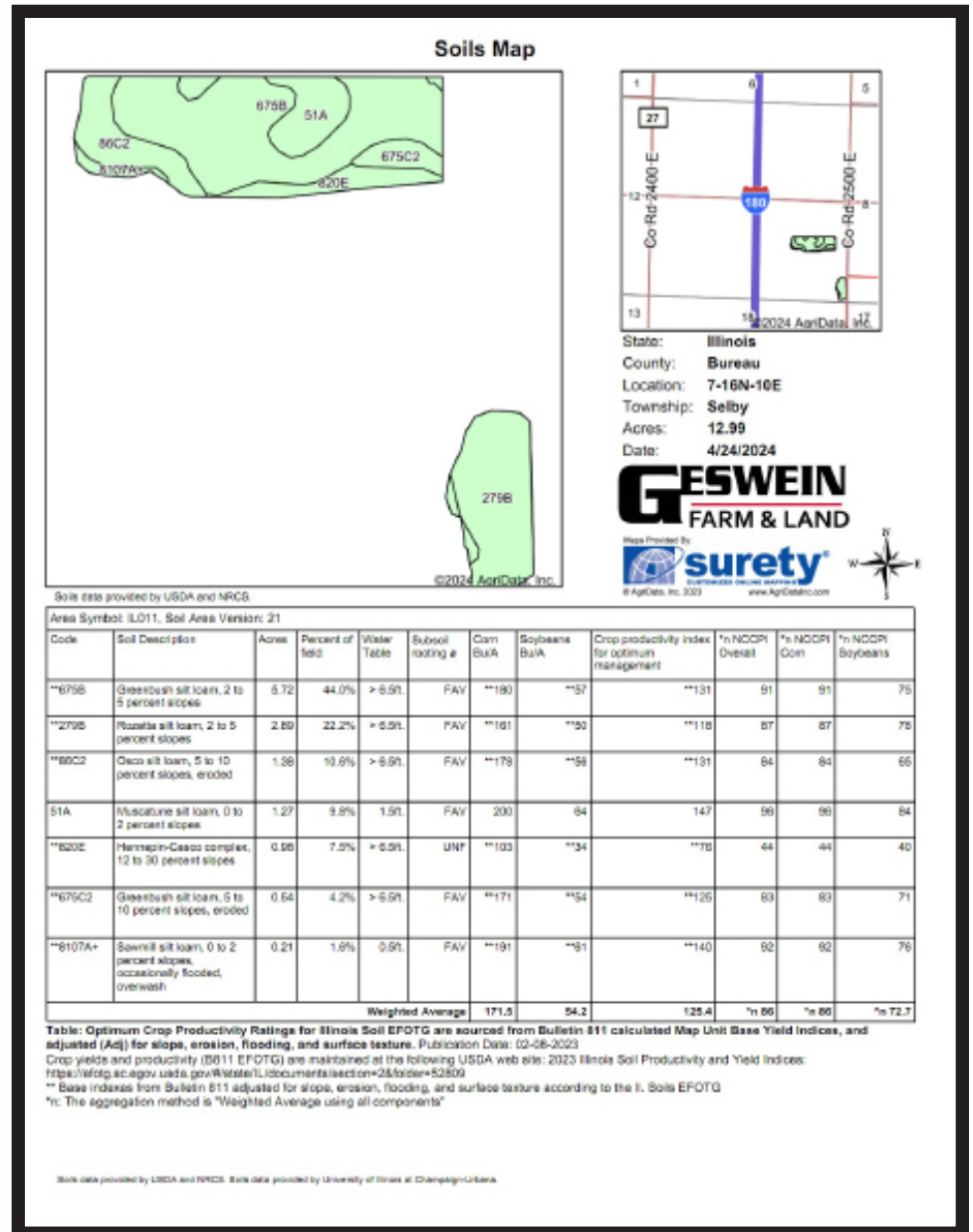
~ 2 Hours from Chicago

~ 1 Hour from Quad Cities

~25 Min from Starved Rock State Park

13 +/- Crop Acres

Farmland Income typically covers annual property taxes



FOR MORE INFORMATION CONTACT:

JEREMY THOMPSON, BROKER

(815) 351 - 5572

jeremy.thompson@Gfarmland.com



FARM & LAND
Real Estate & Auctions



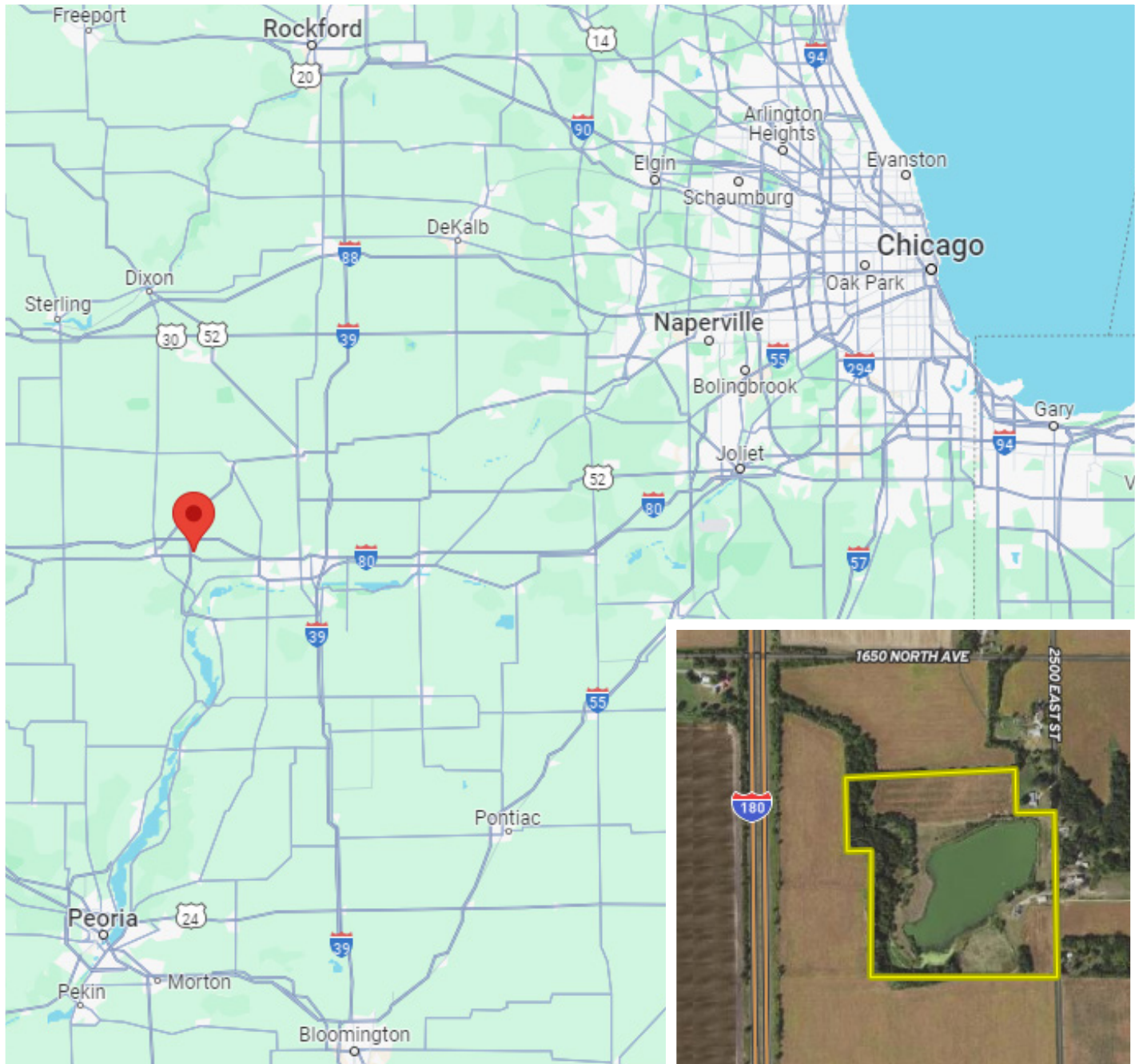
BEAVER GLENN LAKE ESTATE

Princeton, Illinois

- ~ 2 Hours from Downtown Chicago
- ~ 1 Hour from Quad Cities



FARM & LAND
Real Estate & Auctions



TO SCHEDULE A PRIVATE SHOWING:

JEREMY THOMPSON, BROKER

(815) 351 - 5572

jeremy.thompson@Gfarmland.com

FOR DIRECTIONS:

Scan the QR code at right

