

Plat Doc: PLAT
Recorded 11/10/2022 02:49PM
Camie W. Thomas
Clerk Superior Court, JACKSON County,
Ga.
Bk 00085 Pg 0143

Penalty: \$0.00
Interest: \$0.00

Participants: 8568410216

MAP 41 PARCEL 022

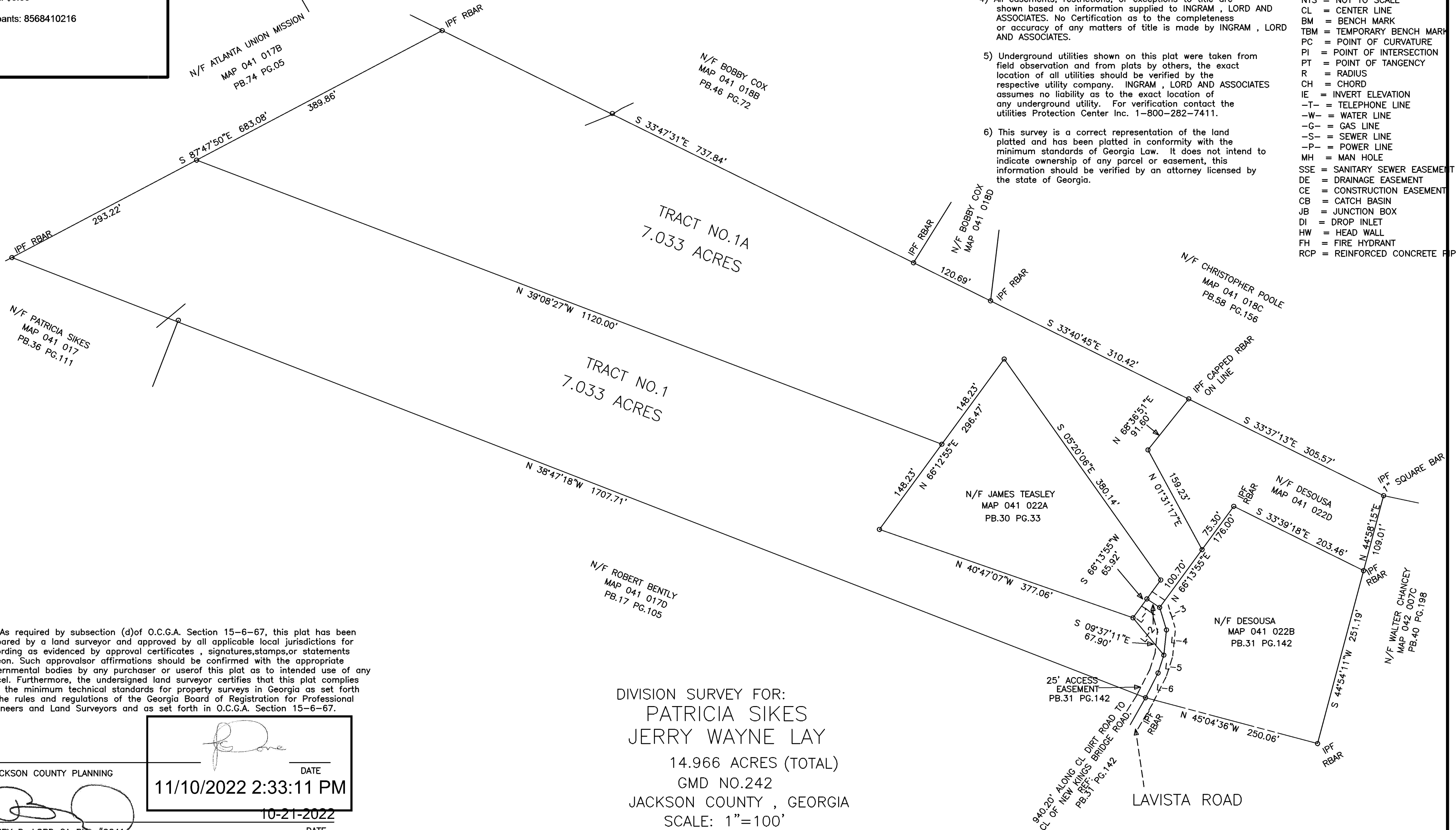
COURSE	BEARING	DISTANCE
L-1	N 66°13'55"E	32.96'
L-2	S 26°09'57"E	21.62'
L-3	S 13°08'58"W	32.93'
L-4	S 35°57'05"W	35.53'
L-5	S 47°51'22"W	26.43'
L-6	S 56°58'17"W	38.89'

GENERAL NOTES

- 1) The field data upon which this plat is based has a precision of one foot in 21,345 feet and an angular error of 03" per angle point and was adjusted using least squares.
- 2) This plat has been calculated for closure and has an accuracy of one foot in 437002 feet.
- 3) Field equipment used for this survey was a Topcon GPT2005.
- 4) All easements, restrictions, or exceptions to title are shown based on information supplied to INGRAM, LORD AND ASSOCIATES. No Certification as to the completeness or accuracy of any matters of title is made by INGRAM, LORD AND ASSOCIATES.
- 5) Underground utilities shown on this plat were taken from field observation and from plats by others, the exact location of all utilities should be verified by the respective utility company. INGRAM, LORD AND ASSOCIATES assumes no liability as to the exact location of any underground utility. For verification contact the utilities Protection Center Inc. 1-800-282-7411.
- 6) This survey is a correct representation of the land platted and has been platted in conformity with the minimum standards of Georgia Law. It does not intend to indicate ownership of any parcel or easement, this information should be verified by an attorney licensed by the state of Georgia.

** LEGEND **

IPF = IRON PIN FOUND
IPS = IRON PIN SET
CMF = CONCRETE MONUMENT FOUND
R/W = RIGHT OF WAY
BL = BUILDING LINE
LLL = LAND LOT LINE
LL = LAND LOT
N/F = NOW OR FORMERLY
NTS = NOT TO SCALE
CL = CENTER LINE
BM = BENCH MARK
TBM = TEMPORARY BENCH MARK
PC = POINT OF CURVATURE
PI = POINT OF INTERSECTION
PT = POINT OF TANGENCY
R = RADIUS
CH = CHORD
IE = INVERT ELEVATION
-T- = TELEPHONE LINE
-W- = WATER LINE
-G- = GAS LINE
-S- = SEWER LINE
-P- = POWER LINE
MH = MAN HOLE
SSE = SANITARY SEWER EASEMENT
DE = DRAINAGE EASEMENT
CE = CONSTRUCTION EASEMENT
CB = CATCH BASIN
JB = JUNCTION BOX
DI = DROP INLET
HW = HEAD WALL
FH = FIRE HYDRANT
RCP = REINFORCED CONCRETE PIPE



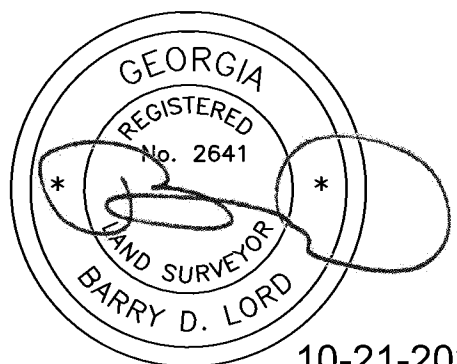
As required by subsection (d) of O.C.G.A. Section 15-6-67, this plat has been prepared by a land surveyor and approved by all applicable local jurisdictions for recording as evidenced by approval certificates, signatures, stamps, or statements hereon. Such approval or affirmations should be confirmed with the appropriate governmental bodies by any purchaser or user of this plat as to intended use of any parcel. Furthermore, the undersigned land surveyor certifies that this plat complies with the minimum technical standards for property surveys in Georgia as set forth in the rules and regulations of the Georgia Board of Registration for Professional Engineers and Land Surveyors and as set forth in O.C.G.A. Section 15-6-67.

JACKSON COUNTY PLANNING

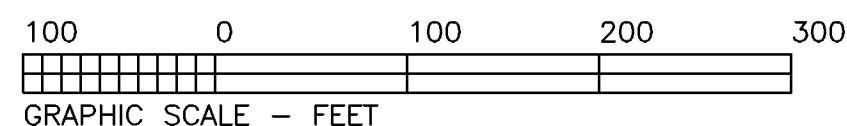
BARRY D. LORD GA RLS #2641

DATE
11/10/2022 2:33:11 PM
DATE
10-21-2022

DIVISION SURVEY FOR:
PATRICIA SIKES
JERRY WAYNE LAY
14.966 ACRES (TOTAL)
GMD NO.242
JACKSON COUNTY, GEORGIA
SCALE: 1"=100'
DATE: FIELD 3-20-2018
DRAWING 3-21-2018



10-21-2022



INGRAM, LORD & ASSOCIATES
LAND SURVEYING AND PLANNING
437 SAM BROWN BLVD.
COMMERCE, GEORGIA 30529
706-335-9069

IL3325