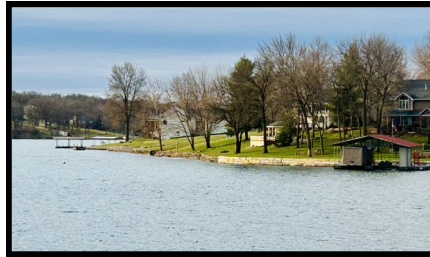


Beautiful Home with 3₊, 40₊, or 80₊ acres!

22783 State Hwy DD. Gallatin, MO 64640



LIKE BRAND NEW!
**Beautiful Brick Home, with
machine *and* utility sheds.**



Home: 3,000₊ sf two story BRICK home with 4 bedrooms and 2 baths. Attached two-car garage, NEW appliances, two fireplaces, oversized bedrooms with plenty of closet space, living room and formal dining room. Includes an estimated 40' x 60' machine shed and a utility shed.



Gallatin R-V School District.

Land: Terraced and tiled, 2 ponds, hunting, timber, row crop and/or hay with 5₊, 40₊, 80₊!



Directions: From Gallatin, West on Hwy 6 to Hwy DD. North on Hwy DD 2 miles. Property is on West side of road.



Enterprise Realty & Auction, LLC

121 E. 4th St.

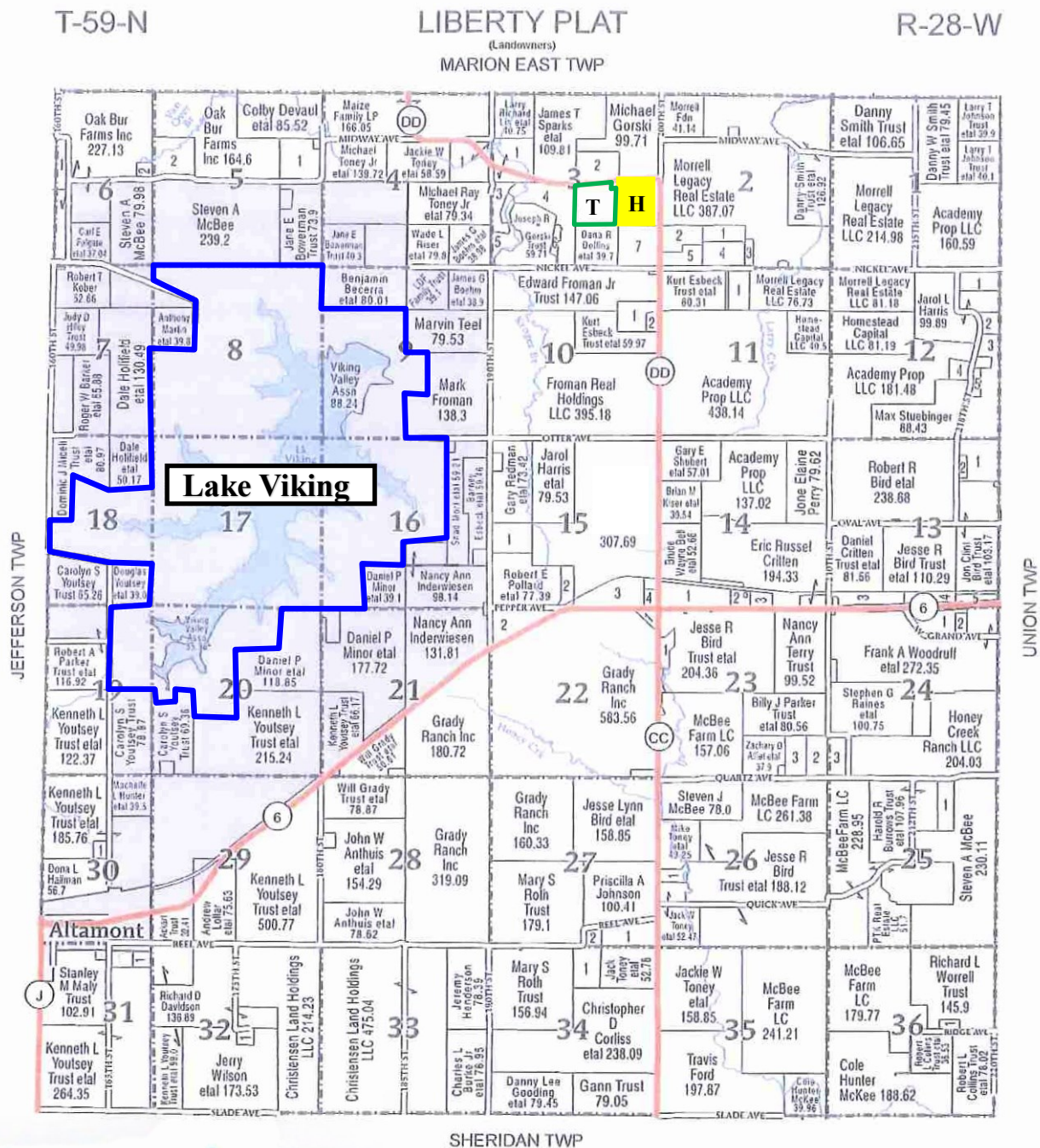
Maryville, MO 64468

Phone (660) 582-7160 Fax (660) 582-7162

property@entrealty.com www.entrealty.com

Beautiful Home with 3±, 40±, or 80± acres!

22783 State Hwy DD. Gallatin, MO 64640



Enterprise Realty & Auction, LLC

121 E. 4th St.

Maryville, MO 64468

Phone (660) 582-7160 Fax (660) 582-7162

property@entrealty.com www.entrealty.com

Beautiful Home with 3_±, 40_±, or 80_± acres!

22783 State Hwy DD. Gallatin, MO 64640



Enterprise Realty & Auction, LLC

121 E. 4th St.

Maryville, MO 64468

Phone (660) 582-7160 Fax (660) 582-7162
property@entrealty.com www.entrealty.com