

1.05± ACRES
LEFLORE COUNTY, MS
\$95,000



SMALLTOWN
HUNTING PROPERTIES
& REAL ESTATESM

OFFICE (662) 846-1425

THE LEFLORE 1.05

PROPERTY PROFILE

LOCATION:

- 1.05± Acres
- Leflore County, MS
- Frontage on the Tallahatchie River
- Frontage on County Road 150

COORDINATES:

- 33.547994, -90.186363

PROPERTY INFORMATION:

- Dead End Road
- River Access
- Hardwood Trees
- Utilities Available

PROPERTY USE:

- Residential



SMALLTOWN
HUNTING PROPERTIES
& REAL ESTATESM

WILSON BRITT

LAND SPECIALIST

C: 662-299-2367

O: 662-846-1425

wilson@smalltownproperties.com

701 W. Sunflower Rd - Cleveland, MS 38732

smalltownproperties.com

Information is believed to be accurate but not guaranteed.

WELCOME TO THE LEFLORE 1.05

ARE YOU LOOKING FOR A PLACE TO BUILD THE HOME OF YOUR DREAMS? This 1.05± acre Leflore County lot may be the one for you! Established just outside the city limits of Greenwood, MS, on the Tallahatchie River, is an up-and-coming residential development. With this location, you won't have to sacrifice convenience for country living! Surrounded by agricultural fields to the north and the river to the south, you will find privacy with a view.

The Tallahatchie Bridge takes you directly to Grand Boulevard, Greenwood's most quaint street. This lot is just minutes away from Highway 82 and downtown Greenwood and less than one mile from Money Road. Whatever your goals, this is an ideal spot in the Mississippi Delta.

For additional information and to schedule a showing, call Wilson Britt today!



SMALLTOWN
HUNTING PROPERTIES
& REAL ESTATESM

WILSON BRITT

LAND SPECIALIST

C: 662-299-2367

O: 662-846-1425

wilson@smalltownproperties.com

701 W. Sunflower Rd - Cleveland, MS 38732

smalltownproperties.com

Information is believed to be accurate but not guaranteed.

1.05 ± ACRES

LEFLORE COUNTY, MISSISSIPPI



SMALLTOWN
HUNTING PROPERTIES
& REAL ESTATESM

WILSON BRITT

LAND SPECIALIST

C: 662-299-2367

O: 662-846-1425

wilson@smalltownproperties.com

701 W. Sunflower Rd - Cleveland, MS 38732

smalltownproperties.com

Information is believed to be accurate but not guaranteed.

1.05 ± ACRES **LEFLORE COUNTY, MISSISSIPPI**



SMALLTOWN
HUNTING PROPERTIES
& REAL ESTATESM

WILSON BRITT

LAND SPECIALIST

C: 662-299-2367

O: 662-846-1425

wilson@smalltownproperties.com

701 W. Sunflower Rd - Cleveland, MS 38732

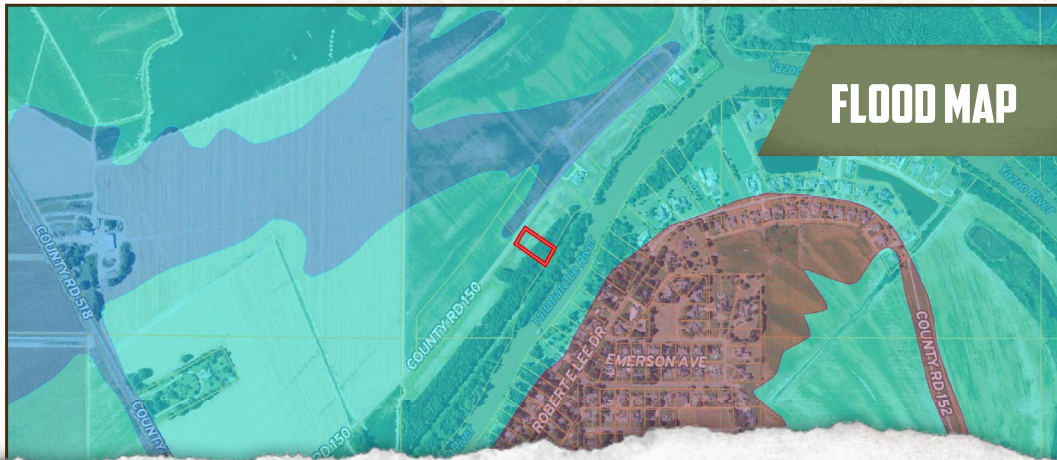
smalltownproperties.com

Information is believed to be accurate but not guaranteed.

1.05 ± ACRES

LEFLORE COUNTY, MISSISSIPPI

land id. LINK



FLOOD MAP



SMALLTOWN
HUNTING PROPERTIES
& REAL ESTATESM

WILSON BRITT

LAND SPECIALIST

C: 662-299-2367

O: 662-846-1425

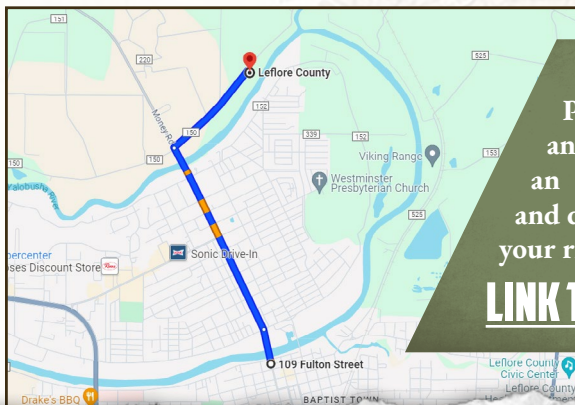
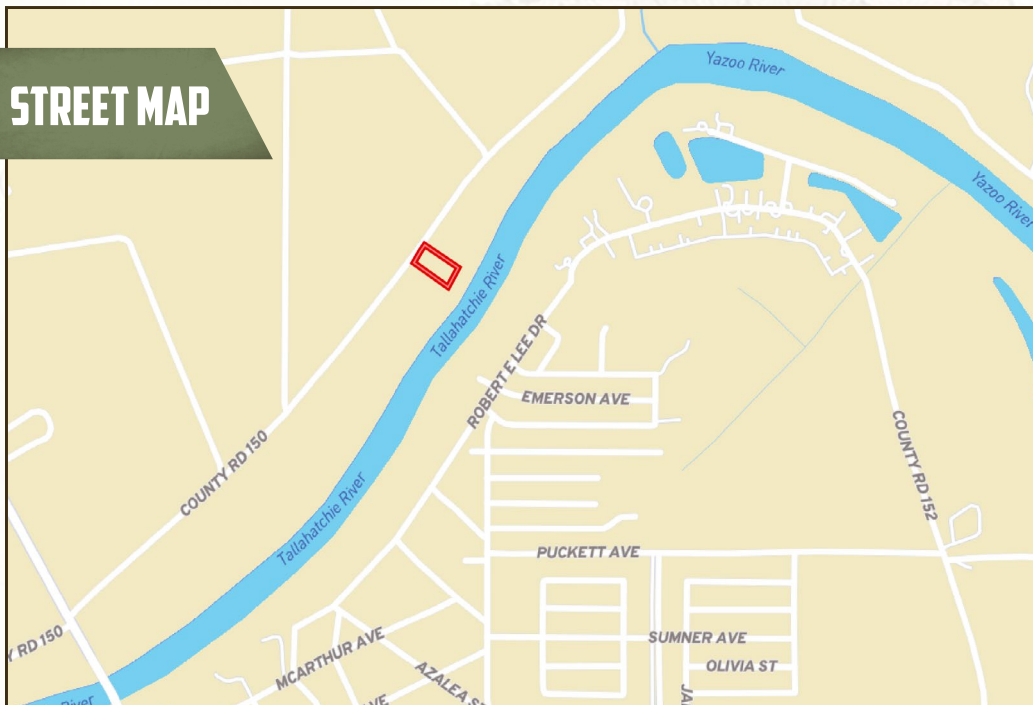
wilson@smalltownproperties.com

701 W. Sunflower Rd - Cleveland, MS 38732

smalltownproperties.com

Information is believed to be accurate but not guaranteed.

STREET MAP



Directions from Greenwood, MS:
Proceed north on Grand Boulevard
and cross the Tallahatchie Bridge. Take
an immediate right off Money Road
and drive 0.7 miles. The destination is on
your right.

[LINK TO GOOGLE MAP DIRECTIONS](#)



SMALLTOWN
HUNTING PROPERTIES
& REAL ESTATESM

WILSON BRITT

LAND SPECIALIST

C: 662-299-2367

O: 662-846-1425

wilson@smalltownproperties.com

701 W. Sunflower Rd - Cleveland, MS 38732

smalltownproperties.com

Information is believed to be accurate but not guaranteed.