

# Poweshiek County

## BUILDING SITES

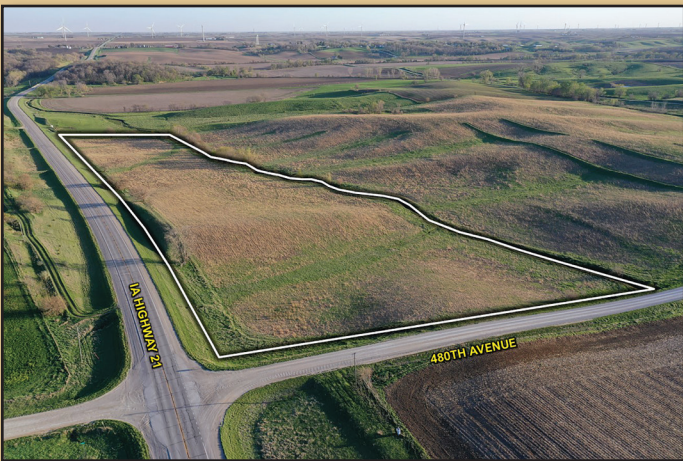
### — FOR SALE —



**OFFERED IN THREE SEPERATE LISTINGS | LISTING 17558 | LISTING 17560 | LISTING 17562**

If your heart is telling you it's time to move to the country, this could be the perfect place for you. We are pleased to offer these uniquely placed 10 and 15-acres lots m/l just off IA Highway 21 just north of Deep River, IA in Poweshiek County. These properties offer gently rolling hills and scenic views of Iowa's countryside. These properties would be an exceptional place to build your future home on pavement. Located only 6 miles south of US Interstate 80, you have quick access to get where you are going. It's tough enough to find a good building site let alone one situated in Poweshiek County located on pavement with quick access to Interstate 80. With abundant wildlife surrounding, it's not uncommon to catch deer and pheasants on the property. These properties has been in the Schlesselman family for nearly 90 years.

**LISTING 17558 | 15 ACRES M/L**



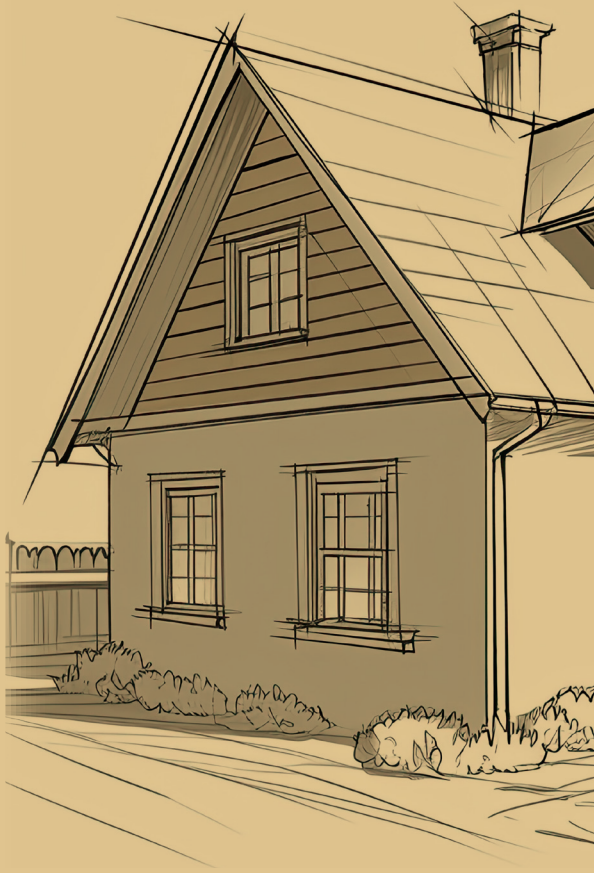
**LISTING 17560 | 10 ACRES M/L**



**LISTING 17562 | 34.87 ACRES M/L**



Peoples Company is pleased to present 34.87 acres m/l located just north of Deep River, IA. This property is a recreational paradise consisting of 24.47 acres m/l enrolled into CRP with an annual payment of \$5,964. Containing a mix of native grasses allows abundant wildlife to use this property as a travel corridor, including whitetail deer and plenty of pheasants. Located only a half mile from pavement this property has an excellent ridge top for a future building site overlooking the rolling hills of Poweshiek County. Whether you are looking for that perfect place to call home, a secluded weekend getaway, or a year-round recreational property, this may be the one that you've been searching for. The farm consists of 28.58 cropland acres carrying a CSR2 rating of 43.1. The property has been in the Schlesselman family for nearly 90 years.



## DEEP RIVER, IOWA



**Riley Sieren**

319.591.0111 | [RILEY@PEOPLESCOMPANY.COM](mailto:RILEY@PEOPLESCOMPANY.COM)

All information, regardless of source, is deemed reliable but not guaranteed and should be independently verified. The information may not be used for any purpose other than to identify and analyze properties and services. The data contained herein is copyrighted by Peoples Company and is protected by all applicable copyright laws. Any dissemination of this information is in violation of copyright laws and is strictly prohibited.

IA LIC S66739000  
**PEOPLES**  
COMPANY  
INTEGRATED LAND SOLUTIONS