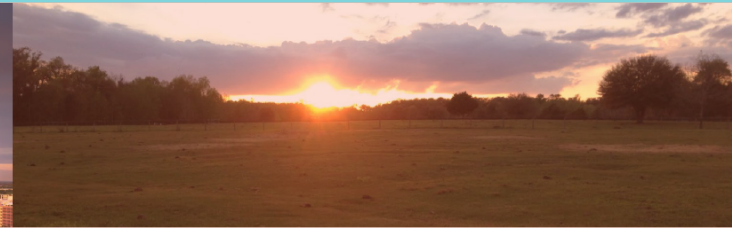
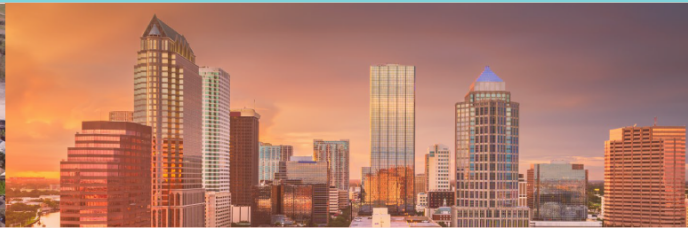


We know this land.



Eshenbaugh

LAND COMPANY

The Dirt Dog



LAKE COUNTY, FL 33585

www.thedirtdog.com

Property Description

PROPERTY DESCRIPTION

Amazing oasis with easy access to Mascotte, Groveland and fast-growing south Lake County. The owner would like to sell acreage on either or both sides of the east and to the west areas of the family homestead. Parcels can range from 3 to 14 acres. Though it is located adjacent to significant residential activity, it is a quiet paradise with shady trees and pond views.

LOCATION DESCRIPTION

The property is located approximately 3 miles north and east of the City of Mascotte and the intersection of CR33 and SR50. It is located south of Simon Brown Road and can be accessed via Pablo Island Drive to the north. From the south, access is provided via an easement and Lake Pickett Drive.

MUNICIPALITY

Lake County, FL between Mascotte and Groveland

PROPERTY SIZE

Two parcels of up to +/- 14 Acres

FUTURE LAND USE

Rural Transition

PROPERTY OWNER

Dionicio Collado

PRICE

\$350,000

BROKER CONTACT INFO

Vaike O'Grady

Sales Associate

813.287.8787 x15

vaike@thedirt dog.com

Bill Eshenbaugh, ALC,CCIM

President, Lic. Real Estate Broker

813.287.8787 x1

Bill@TheDirtDog.com

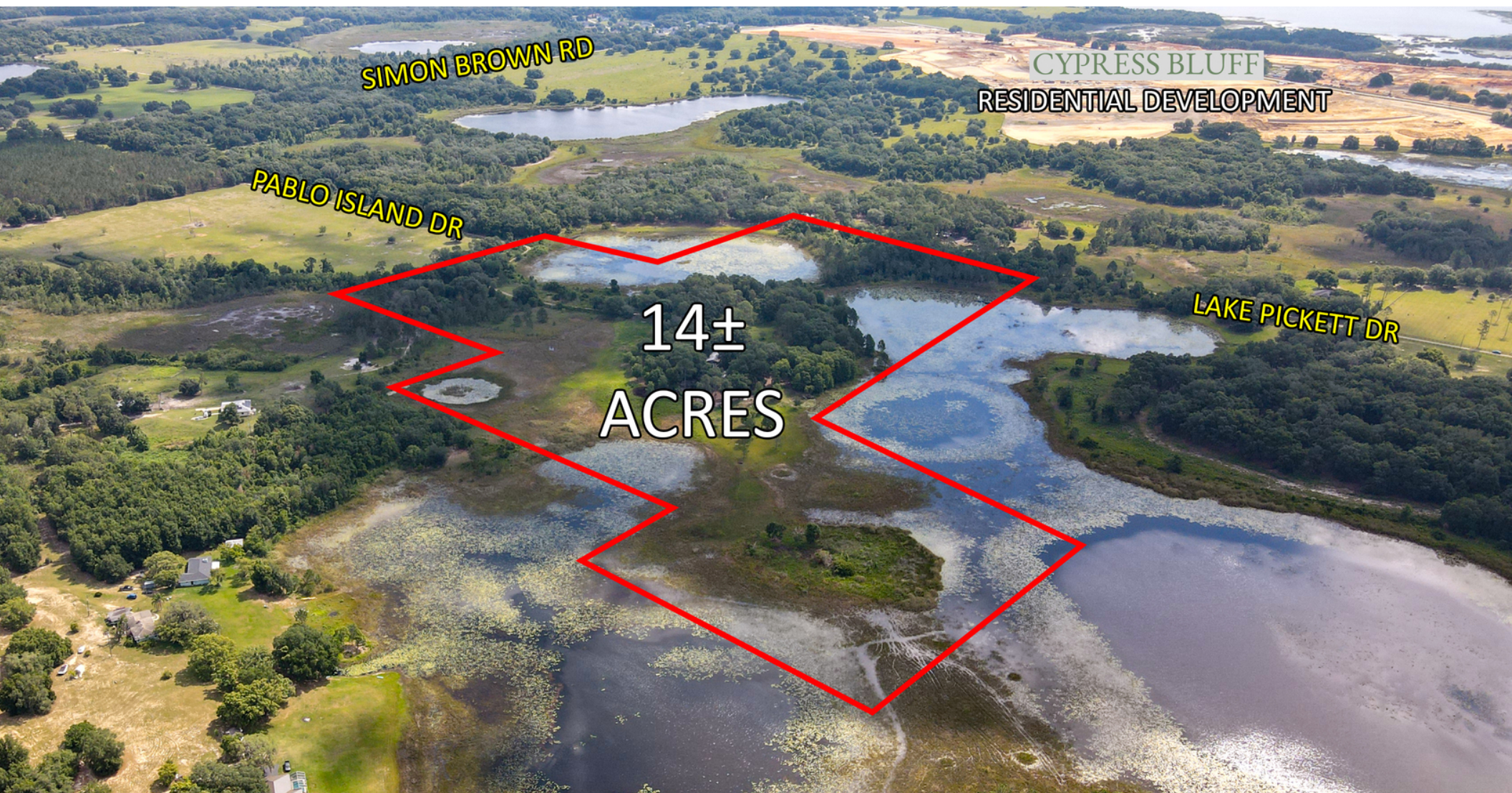
Aerial



Aerials (cont.)



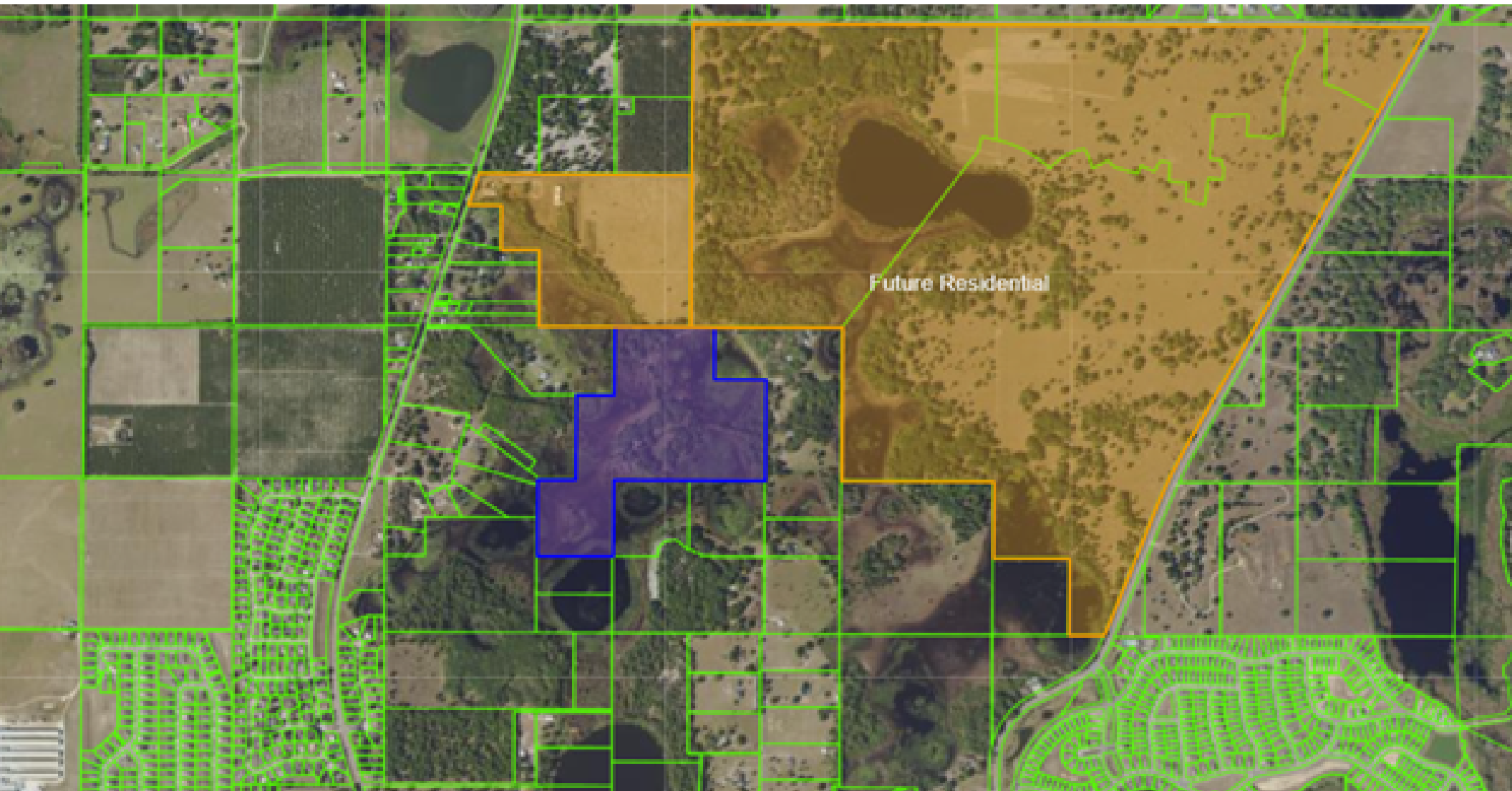
Aerials (cont.)



Additional Photos



Additional Photos



Demographics Map & Report

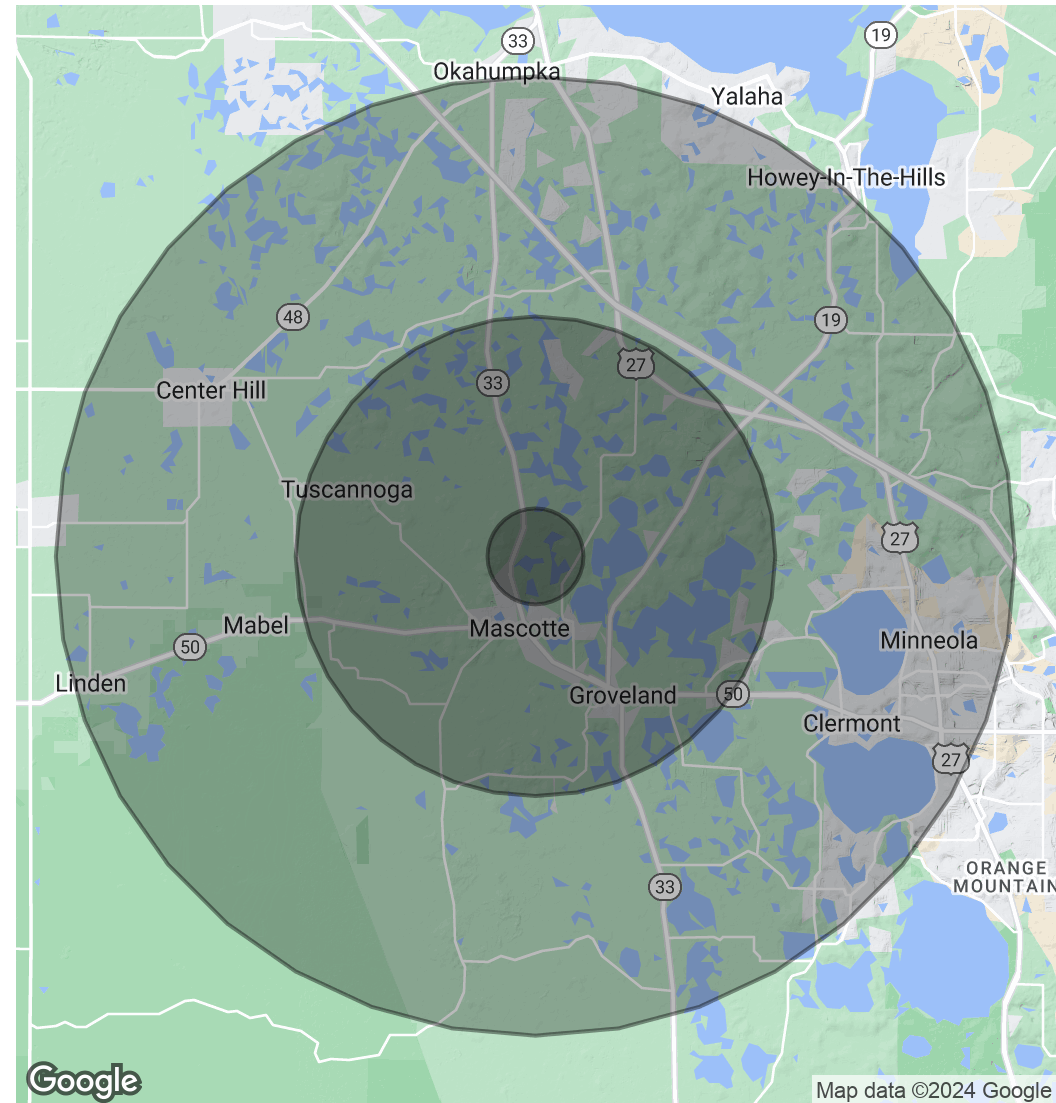
POPULATION

	1 MILE	5 MILES	10 MILES
Total Population	789	27,963	103,365
Average Age	37	41	45
Average Age (Male)	0	0	0
Average Age (Female)	0	0	0

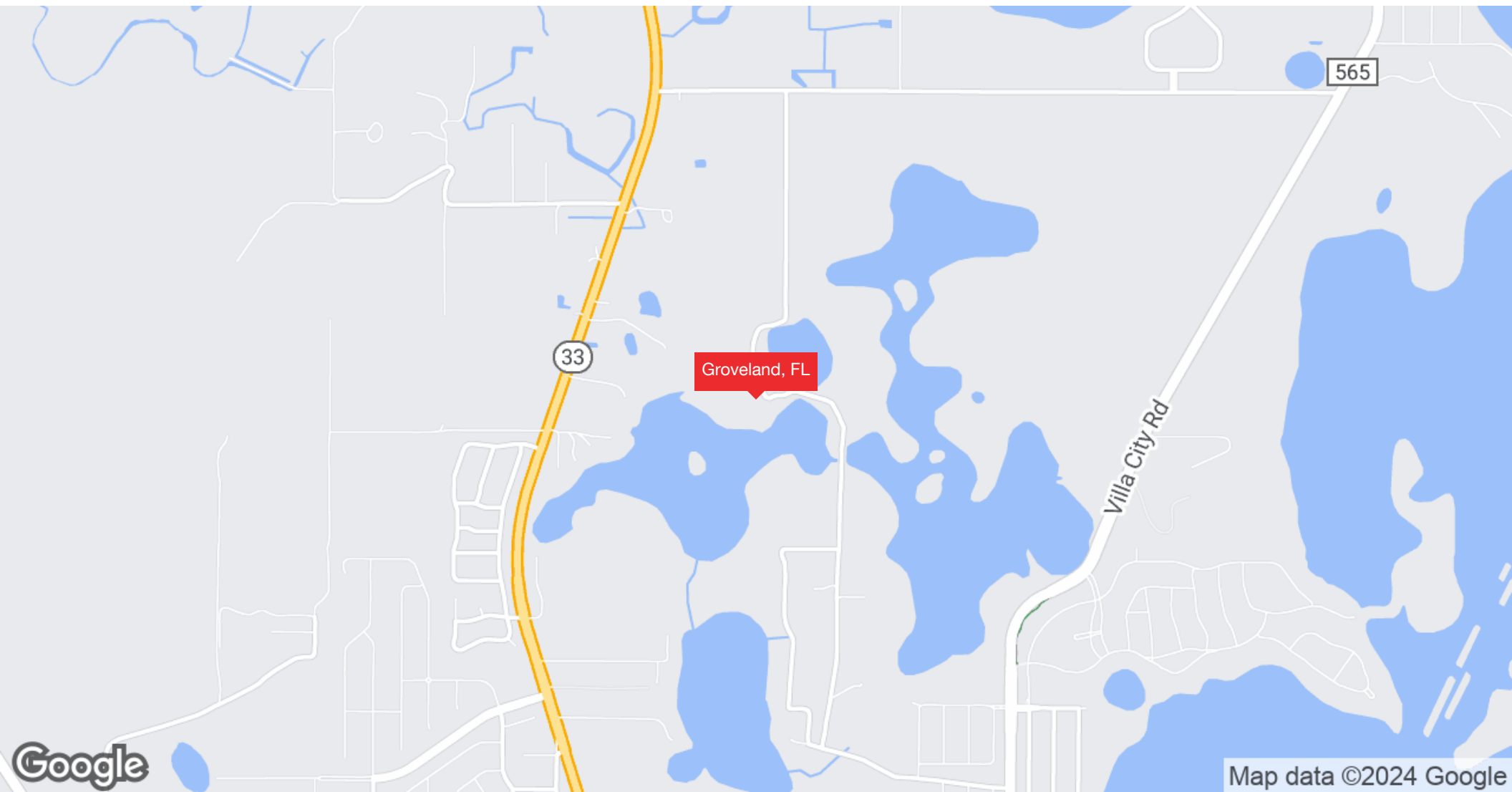
HOUSEHOLDS & INCOME

	1 MILE	5 MILES	10 MILES
Total Households	251	9,690	39,487
# of Persons per HH	3.1	2.9	2.6
Average HH Income	\$83,844	\$87,107	\$97,748
Average House Value	\$309,336	\$344,720	\$373,558

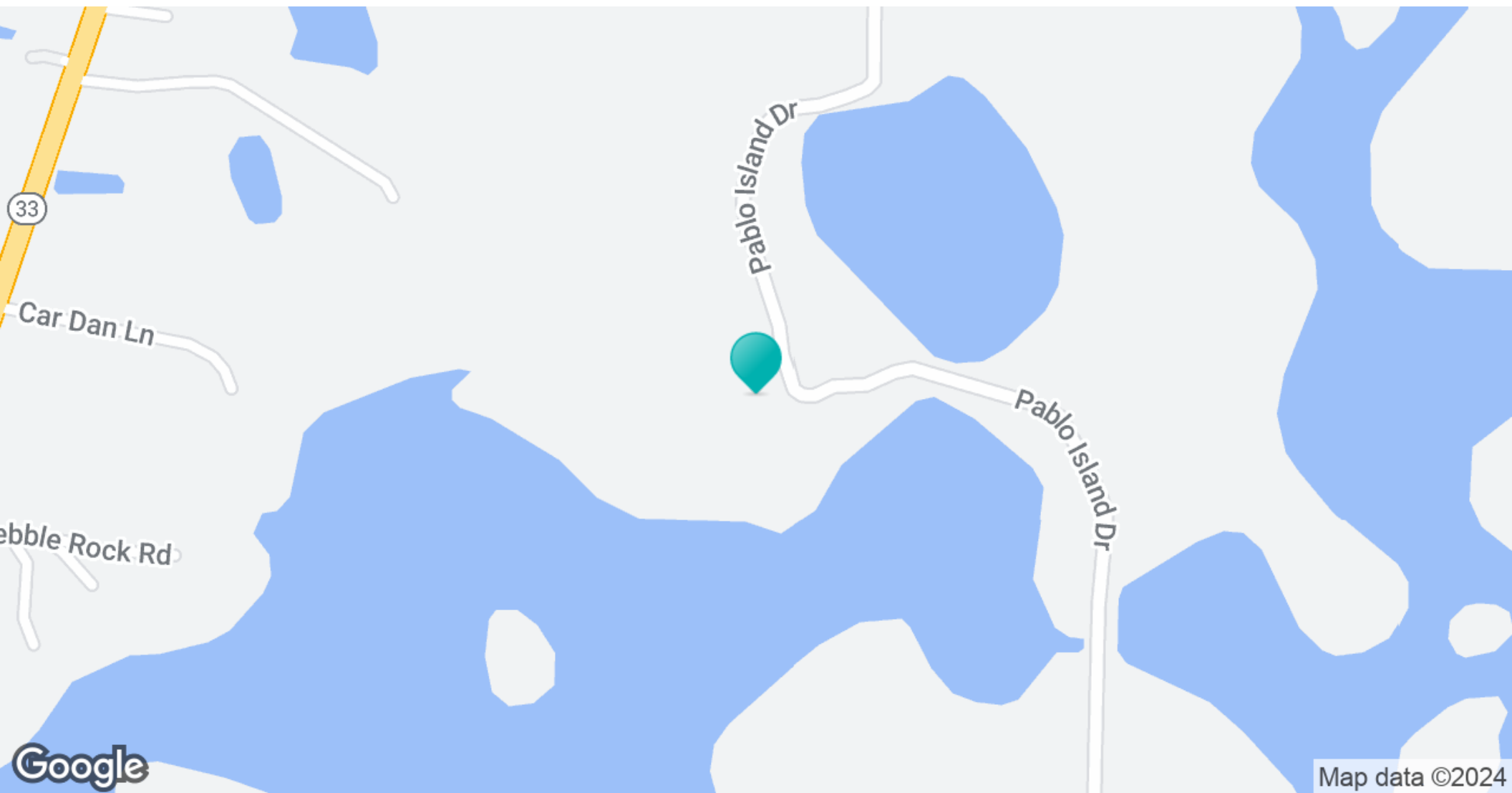
Demographics data derived from AlphaMap



Regional Map



Location Map



Confidentiality & Disclaimer

All materials and information received or derived from Eshenbaugh Land Company, LLC its directors, officers, agents, advisors, affiliates and/or any third party sources are provided without representation or warranty as to completeness, veracity, or accuracy, condition of the property, compliance or lack of compliance with applicable governmental requirements, developability or suitability, financial performance of the property, projected financial performance of the property for any party's intended use or any and all other matters.

Neither Eshenbaugh Land Company, LLC its directors, officers, agents, advisors, or affiliates makes any representation or warranty, express or implied, as to accuracy or completeness of the any materials or information provided, derived, or received. Materials and information from any source, whether written or verbal, that may be furnished for review are not a substitute for a party's active conduct of its own due diligence to determine these and other matters of significance to such party. Eshenbaugh Land Company, LLC will not investigate or verify any such matters or conduct due diligence for a party unless otherwise agreed in writing.

EACH PARTY SHALL CONDUCT ITS OWN INDEPENDENT INVESTIGATION AND DUE DILIGENCE.

Any party contemplating or under contract or in escrow for a transaction is urged to verify all information and to conduct their own inspections and investigations including through appropriate third party independent professionals selected by such party. All financial data should be verified by the party including by obtaining and reading applicable documents and reports and consulting appropriate independent professionals. Eshenbaugh Land Company, LLC makes no warranties and/or representations

regarding the veracity, completeness, or relevance of any financial data or assumptions. Eshenbaugh Land Company, LLC does not serve as a financial advisor to any party regarding any proposed transaction. All data and assumptions regarding financial performance, including that used for financial modeling purposes, may differ from actual data or performance. Any estimates of market rents and/or projected rents that may be provided to a party do not necessarily mean that rents can be established at or increased to that level. Parties must evaluate any applicable contractual and governmental limitations as well as market conditions, vacancy factors and other issues in order to determine rents from or for the property.

Legal questions should be discussed by the party with an attorney. Tax questions should be discussed by the party with a certified public accountant or tax attorney. Title questions should be discussed by the party with a title officer or attorney. Questions regarding the condition of the property and whether the property complies with applicable governmental requirements should be discussed by the party with appropriate engineers, architects, contractors, other consultants and governmental agencies. All properties and services are marketed by Eshenbaugh Land Company, LLC in compliance with all applicable fair housing and equal opportunity laws.

Eshenbaugh Land Company is a licensed real estate brokerage firm in Florida and William A. Eshenbaugh is the broker of record.