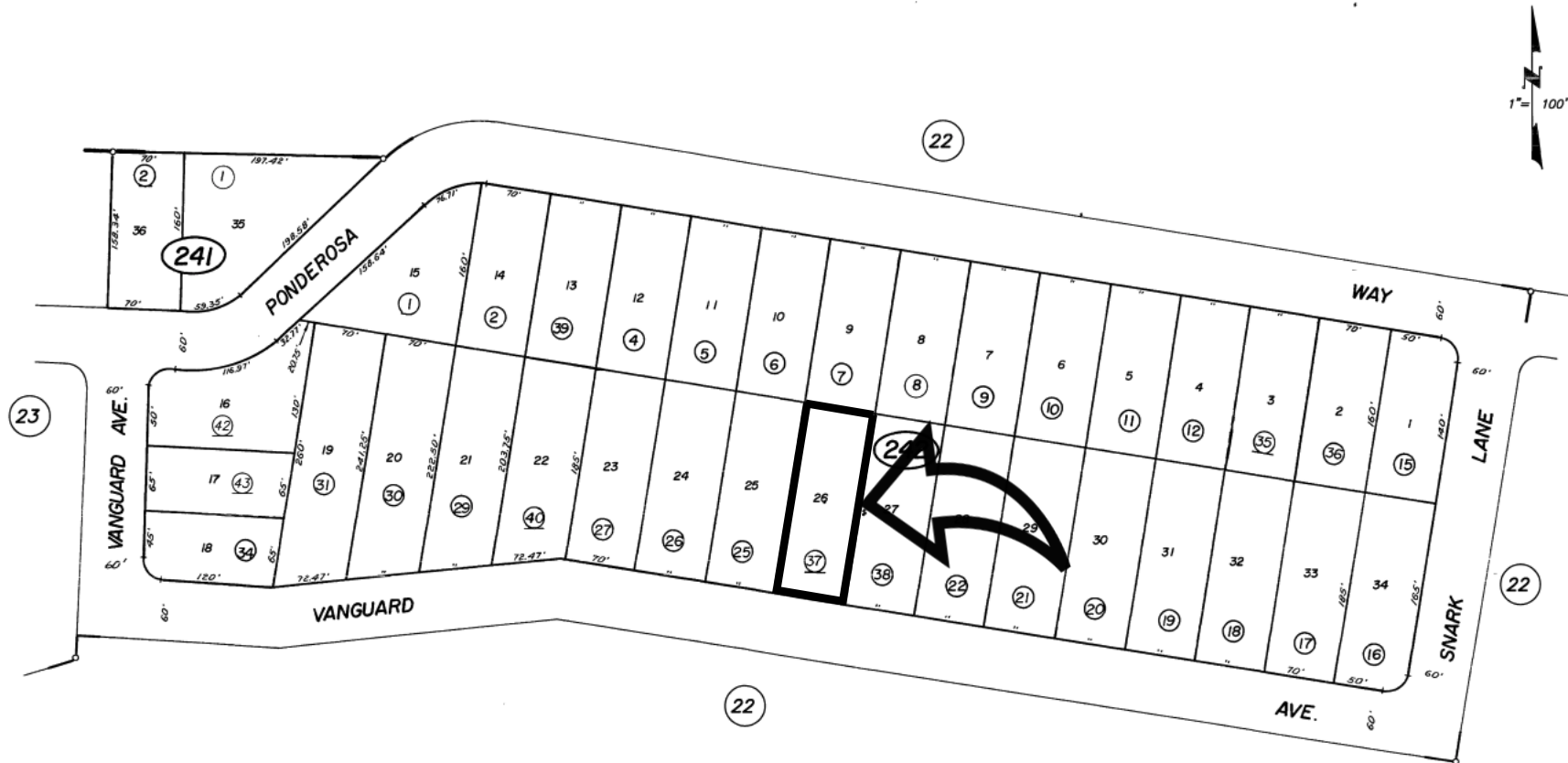


SUBDIVIDED LAND IN N1/2 N1/2 SEC. 29, T.29N., R.2E., M.D.B.&M.

13-24



R.M. Bk. L, Pg. 34-Ponderosa Sky Ranch Subdivision

Assessor's Map Bk. 13 -Pg. 24
County of Tehama, Calif.NOTE-Assessor's Block Numbers Shown in Ellipses
Assessor's Parcel Numbers Shown in Circles