



Prime Recreational Wapello Co. Land For Sale

215th Avenue, Blakesburg, IA 52536

**Hawkeye Farm
Mgmt & Real Estate**

Price: \$356,800

Acres: 64 +/-

Price/Acre: \$5,575







PROPERTY DETAILS

- Top End Hunting Opportunities
- Proven Trophy Whitetail Producer
- Productive Ag Land
- 62.4 CSR2 on Crop Acres
- Potential Building Site
- 30'x40' Open Front Building
- Estimated Annual Taxes \$654

CONTACT US



**Hawkeye
Farm Mgmt &
Real Estate**

 (641) 932-7796
 Hawkeye@UCIowa.com
 www.UCIowa.com
 1010 S Clinton
Albia, IA 52531



RYAN AMMONS

(641) 777- 2955

Ryan@UCIowa.com



NATE AMMONS

(641) 777-2861

Nate@UCIowa.com



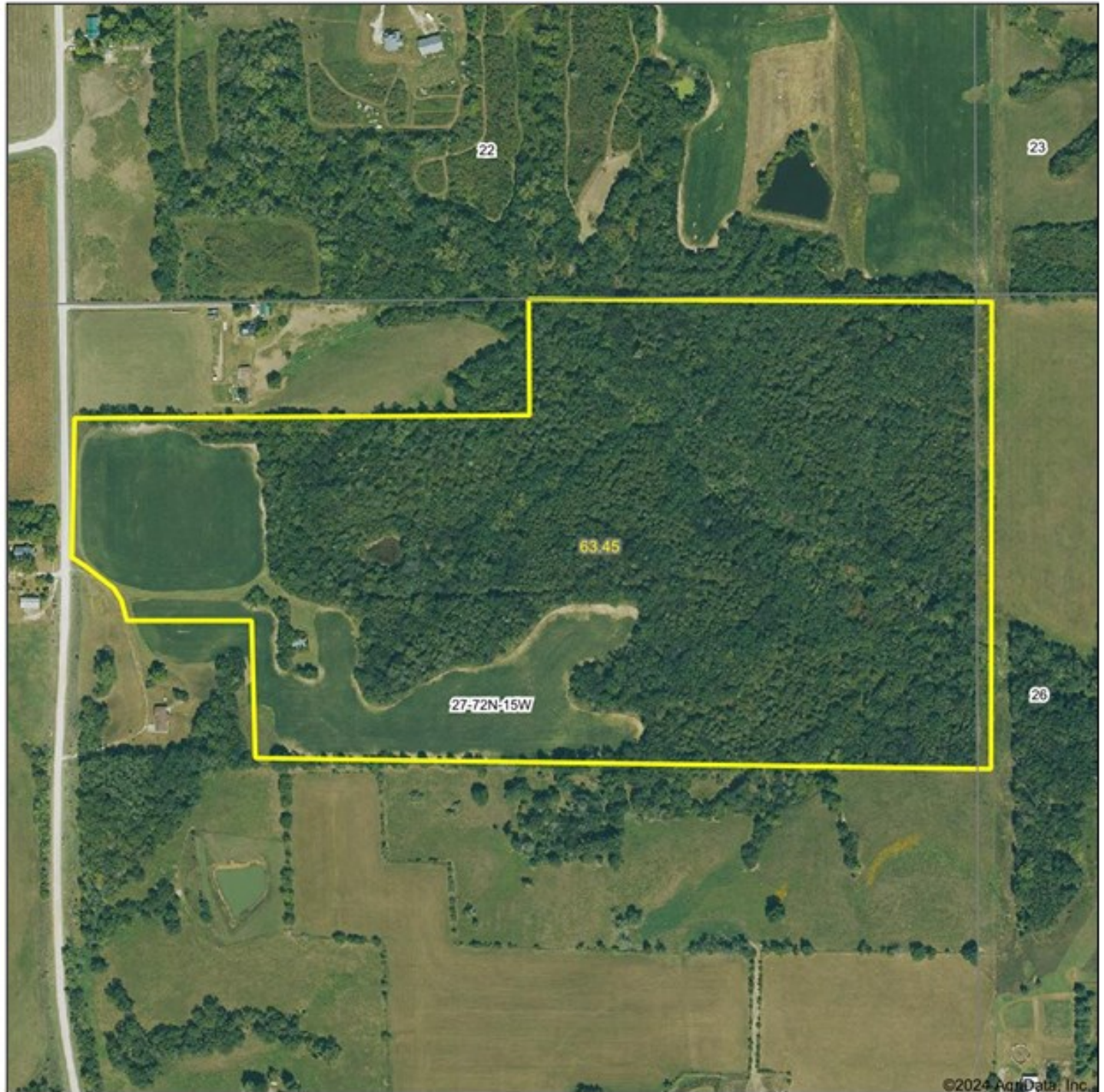
Alan Ammons, Broker, Licensed in Iowa & Missouri. All Agents Licensed in Iowa. The above information, although believed to be accurate, is not warranted or guaranteed by the owner, listing firm, or listing agent.

PROPERTY MAP



**Hawkeye
Farm Mgmt &
Real Estate**

Aerial Map



Hawkeye Farm Mgmt & Real Estate



22 W Main, Ames IA Phone: 563-452-1796
Email: hawkeyefarm@ucr.com
On the web: www.ucsos.com
www.hawkeyefarm.com

Boundary Center: 41° 0' 51.5, -92° 34' 2.94

0ft 441ft 882ft

27-72N-15W
Wapello County
Iowa



4/30/2024

Maps Provided by
 surety
CUSTOMIZED ONLINE MAPPING
© AgriData, Inc. 2023 www.AgridataInc.com