

120± Acres in Jefferson County, MS

\$359,000



**SMALLTOWN**

HUNTING PROPERTIES  
& REAL ESTATE

Office 769-760-0005



# Property Profile

## Jefferson County Hunting & Timberland

### Location:

- Jefferson County, MS
- Foster Road Frontage
- 38 Miles West of Hazlehurst

### Coordinates:

- 31.752042, -90.837090

### Property Information:

- 120± Acres
- Rolling Terrain
- Food Plots
- Established Trail System
- Outstanding Wildlife Habitat
- Mature Pine, Medium Age Pine, Hardwood, Cutover
- Creek

### Property Use:

- Deer
- Turkey
- Timber Investment

### Tax Information:

- Parcel 0096-17-002, 0095-08-004: \$638.61 for 2023



**SMALLTOWN**  
HUNTING PROPERTIES  
& REAL ESTATE<sup>SM</sup>

### DENNIS WEST

EAST MISSISSIPPI MANAGING BROKER

ALABAMA QUALIFYING BROKER

LOUISIANA ASSOCIATE BROKER

C: 601-248-4396 | O: 769-760-0005

[dennis@smalltownproperties.com](mailto:dennis@smalltownproperties.com)

2121 5th St., Ste 206 - Meridian, MS 39301

[smalltownproperties.com](http://smalltownproperties.com)



Are you searching for a recreational property with hunting opportunities and timber? Take a look at this 120± acre diverse property in Jefferson County, MS offering an abundance of wildlife, various ages of timber, gravel road frontage, powerline right of way, interior trails and much more.



**SMALLTOWN**  
HUNTING PROPERTIES  
& REAL ESTATE<sup>SM</sup>

**DENNIS WEST**

*EAST MISSISSIPPI MANAGING BROKER*

*ALABAMA QUALIFYING BROKER*

*LOUISIANA ASSOCIATE BROKER*

**C: 601-248-4396 | O: 769-760-0005**

**dennis@smalltownproperties.com**

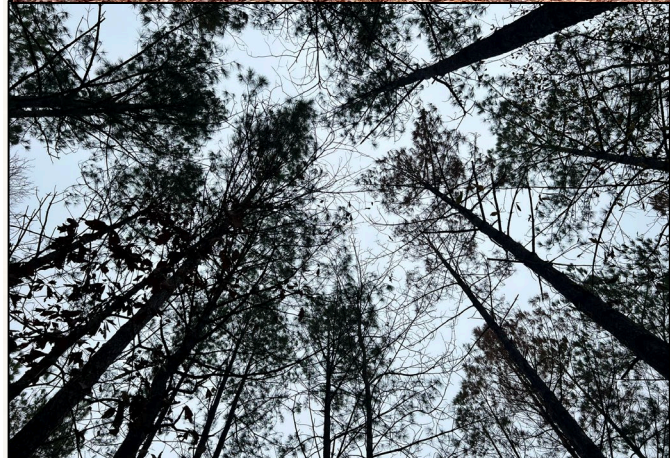
**2121 5th St., Ste 206 - Meridian, MS 39301**

**smalltownproperties.com**

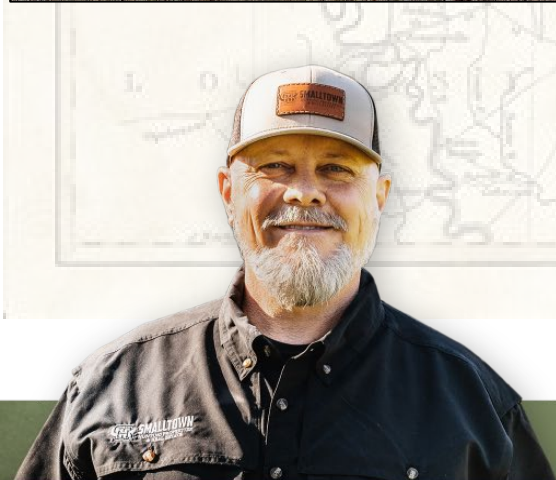


Information is believed to be accurate but not guaranteed.





Taking a closer look, you will notice a diverse timber stand which includes mature pine, medium age pine, aged cutover and hardwood along a small creek. Miles of interior trails are in place making it easy to access all parts of the property. The powerline right of way and food plots throughout maximize hunting deer, turkey and other wildlife. The property is situated on both sides of Foster Road, only a few miles from Union Church. This hunting and timberland tract is conveniently located approximately 40 minutes west of Hazlehurst, 90 minutes south of the Jackson metro area and just over three hours from New Orleans. To see all this place has to offer, call Dennis West today.



**SMALLTOWN**  
HUNTING PROPERTIES  
& REAL ESTATE<sup>SM</sup>

**DENNIS WEST**

*EAST MISSISSIPPI MANAGING BROKER*

*ALABAMA QUALIFYING BROKER*

*LOUISIANA ASSOCIATE BROKER*

**C: 601-248-4396 | O: 769-760-0005**

**dennis@smalltownproperties.com**

**2121 5th St., Ste 206 - Meridian, MS 39301**

**smalltownproperties.com**





**SMALLTOWN**  
HUNTING PROPERTIES  
& REAL ESTATE<sup>SM</sup>

**DENNIS WEST**

*EAST MISSISSIPPI MANAGING BROKER*

*ALABAMA QUALIFYING BROKER*

*LOUISIANA ASSOCIATE BROKER*

**C: 601-248-4396 | O: 769-760-0005**

**dennis@smalltownproperties.com**

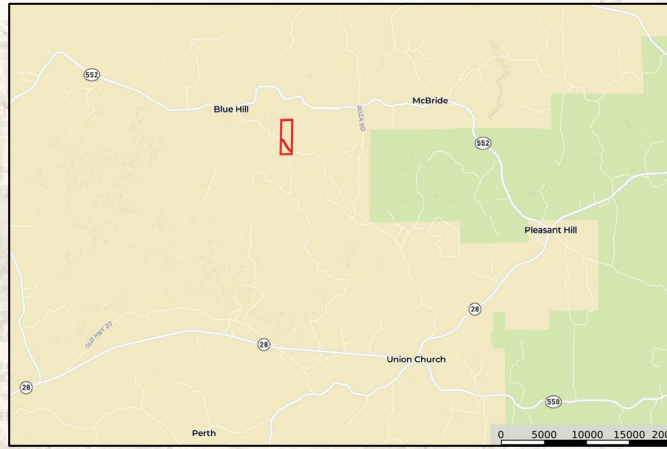
**2121 5th St., Ste 206 - Meridian, MS 39301**

**smalltownproperties.com**

Information is believed to be accurate but not guaranteed.

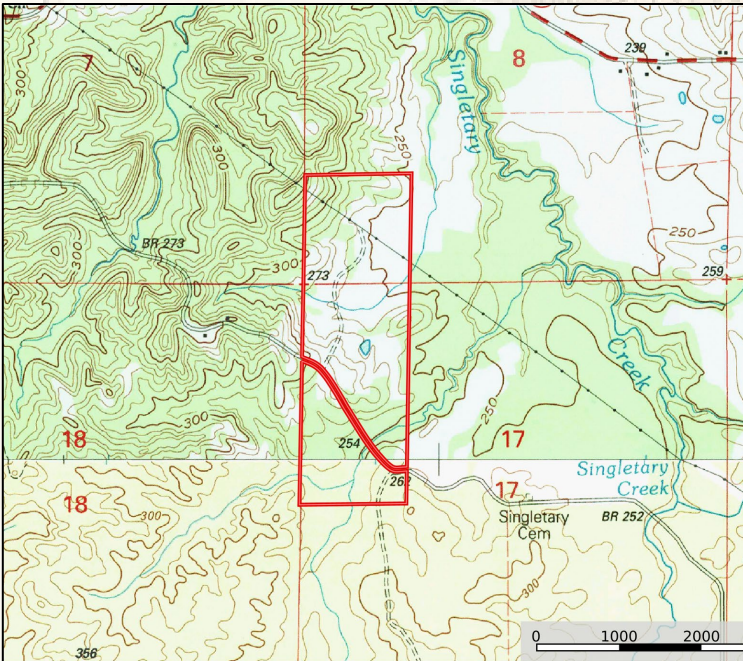


## Google Map Link



- Boundary Consists of 120± Acres
- Foster Road Frontage
- Approximately 38 Miles from I-55

## MapRight Link



**SMALLTOWN**  
HUNTING PROPERTIES  
& REAL ESTATE<sup>SM</sup>

**DENNIS WEST**

*EAST MISSISSIPPI MANAGING BROKER*

*ALABAMA QUALIFYING BROKER*

*LOUISIANA ASSOCIATE BROKER*

**C: 601-248-4396 | O: 769-760-0005**

**dennis@smalltownproperties.com**

**2121 5th St., Ste 206 - Meridian, MS 39301**

**smalltownproperties.com**